

Company: Esso Australia Pty Ltd.

Well: A-9b
Field: Bream A
Rig : Prod4 / Crane

Country: Australia

7" Posiset Plug
Setting Record

Prod4 / Crane

Rig :
Field: Bream A
Location: Gippsland
Well: A-9b
Company: Esso Australia Pty Ltd.

LOCATION

Gippsland
Basin
Bass Strait

Elev.: K.B. 32.82 m
G.L. -59.00 m
D.F. 32.82 m

Permanent Datum: _____
Log Measured From: D.F. _____
Drilling Measured From: D.F. _____

Elev.: 0.00 m
32.82 m above Perm. Datum

State :
Victoria

Max. Well Deviation
48 deg

Longitude
147 46'15"E

Latitude
038 30'04"S

Logging Date				28-Oct-2008		
Run Number				1 thru 5		
Depth Driller				2195 m		
Schlumberger Depth				2198 m		
Bottom Log Interval				2198 m		
Top Log Interval				2100 m		
Casing Fluid Type				Production Fluids		
Salinity						
Density						
Fluid Level						
BIT/CASING/TUBING STRING						
Bit Size				8.500 in		
From						
To						
Casing/Tubing Size				7.000 in		
Weight				26 lbm/ft		
Grade				L-80		
From				1602 m		
To				2281 m		
Maximum Recorded Temperatures				204 degF		
Logger On Bottom				28-Oct-2008		17:00
Unit Number		Location		889	Prod4 / Ausl	
Recorded By				G Wright & S Gilbert.		
Witnessed By				G Rimmer, D Madden		

				Run 1	
PVT DATA					
Oil Density					
Water Salinity					
Gas Gravity					
Bo					
Bw					
1/Bg					
Bubble Point Pressure					
Bubble Point Temperature					
Solution GOR					
Maximum Deviation				48 deg	
CEMENTING DATA					
Primary/Squeeze				Primary	
Casing String No					
Lead Cement Type					
Volume					
Density					
Water Loss					
Additives					
Tail Cement Type					
Volume					
Density					
Water Loss					
Additives					
Expected Cement Top					
Logging Date					
Run Number					
Depth Driller					
Schlumberger Depth					
Bottom Log Interval					
Top Log Interval					
Casing Fluid Type					
Salinity					
Density					
Fluid Level					
BIT/CASING/TUBING STRING					
Bit Size					
From					
To					
Casing/Tubing Size					
Weight					
Grade					
From					
To					
Maximum Recorded Temperatures					
Logger On Bottom				Time	
Unit Number		Location			
Recorded By					
Witnessed By					

DEPTH SUMMARY LISTING

Date Created: 15-OCT-2008 16:00:40

Depth System Equipment

Depth Measuring Device	Tension Device	Logging Cable
Type: IDW-EB Serial Number: 6373 Calibration Date: 04-JAN-2007 Calibrator Serial Number: 9 Calibration Cable Type: 2-23ZT Wheel Correction 1: -2 Wheel Correction 2: -4	Type: PSDS/OSDS Serial Number: 325357 Calibration Date: 20-Sep-2008 Calibrator Serial Number: 1174 Calibration Gain: 0.94 Calibration Offset: 0.00	Type: 2-32ZT Serial Number: 208196 Length: 7315 M Conveyance Method: Wireline Rig Type: Offshore_Fixed

Depth Control Parameters

Log Sequence:	Subsequent Log In the Well
Reference Log Name:	Solar Composite Log
Reference Log Run Number:	
Reference Log Date:	.

Depth Control Remarks

1. IDW used as primary depth control.
2. Z-chart used as secondary backup
3.
4.
5.
6.

DISCLAIMER

THE USE OF AND RELIANCE UPON THIS RECORDED-DATA BY THE HEREIN NAMED COMPANY (AND ANY OF ITS AFFILIATES, PARTNERS, REPRESENTATIVES, AGENTS, CONSULTANTS AND EMPLOYEES) IS SUBJECT TO THE TERMS AND CONDITIONS AGREED UPON BETWEEN SCHLUMBERGER AND THE COMPANY, INCLUDING: (a) RESTRICTIONS ON USE OF THE RECORDED-DATA; (b) DISCLAIMERS AND WAIVERS OF WARRANTIES AND REPRESENTATIONS REGARDING COMPANY'S USE OF AND RELIANCE UPON THE RECORDED-DATA; AND (c) CUSTOMER'S FULL AND SOLE RESPONSIBILITY FOR ANY INFERENCE DRAWN OR DECISION MADE IN CONNECTION WITH THE USE OF THIS RECORDED-DATA.

OTHER SERVICES1
OS1: None
OS2:
OS3:
OS4:
OS5:
REMARKS: RUN NUMBER 1
Log correlated to ExxonMobil composite supplied with logging program.
Maximum well deviation = 48 degrees at 1702.8m MDKB.
Objective:Depth determination of existing HPI plug @ 2195m MDKB (Tagged @ 2198m MDKB)
Set 7" 26lb/ft MPBT with Top of seal @ 2193m MDKB and dump approx 1m of Cement on top .
HUD: 2198m MDKB (top of old HPI Plug).
Run # 1- CCL to Bottom of Dump Bailer = 12m
Logged Down to Set Depth due to lack of room below new plug
7" Posiset Plug

MPEX-7" Posiset Plug
MPEX-7" Posiset Plug

3.20

TOOL BOTTOM

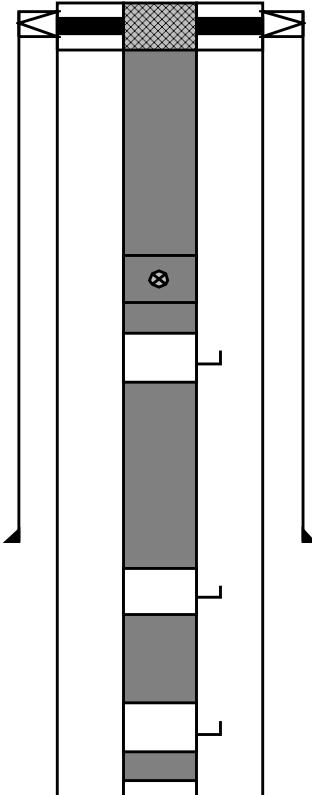
MAXIMUM STRING DIAMETER 2.13 IN
MEASUREMENTS RELATIVE TO TOOL ZERO
ALL LENGTHS IN METERS

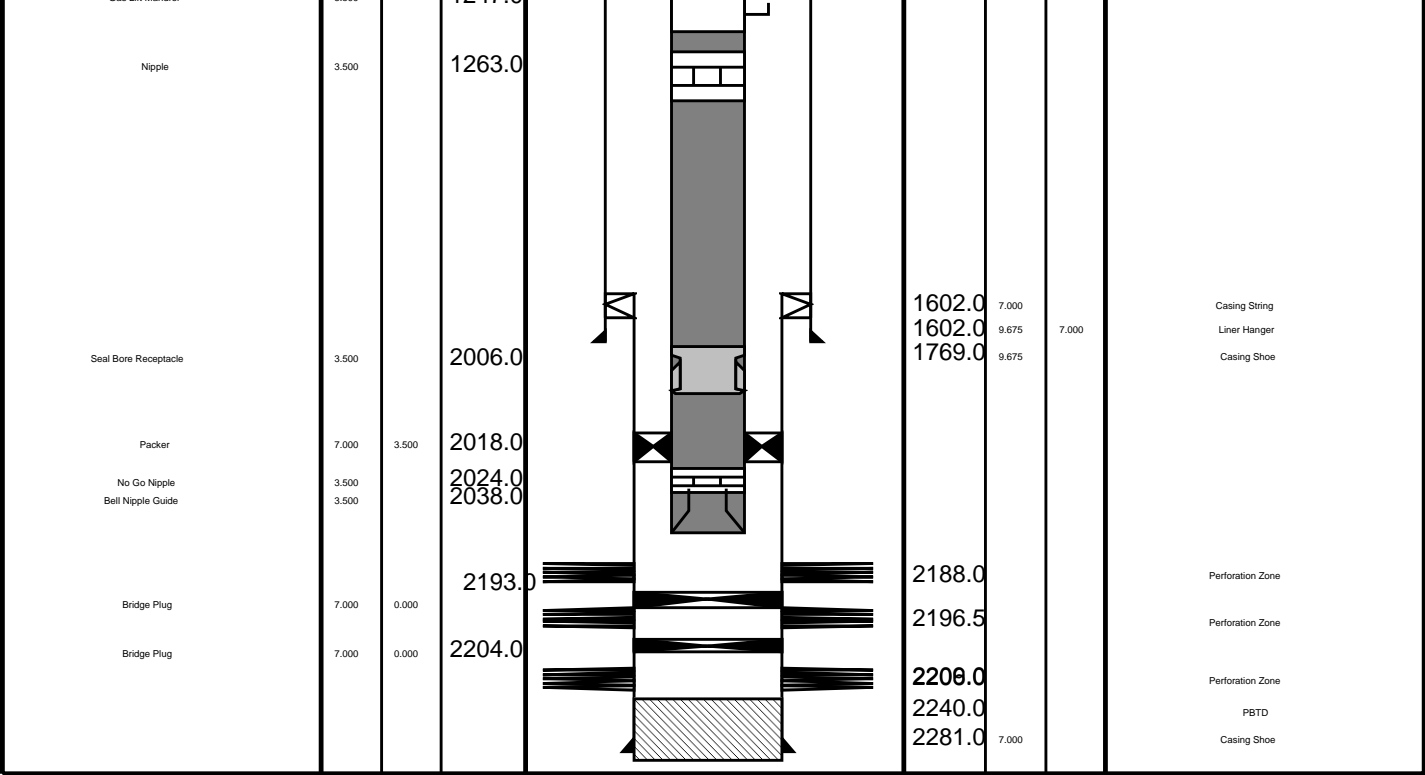
SHM_GUN
AH-Hydraulic Release 1
AH-Hydraulic Release 1

1.12
1.12

TOOL BOTTOM

MAXIMUM STRING DIAMETER 2.13 IN
MEASUREMENTS RELATIVE TO TOOL ZERO
ALL LENGTHS IN METERS

Production String	(in)		(m)	Well Schematic	(m)	(in)		Casing String
	OD	ID	MD		MD	OD	ID	
Tubing Hanger	9.675	3.500	11.3		11.8	9.675	Casing String	
	Tubing	3.500	11.3		11.8	13.375	9.675	Liner Hanger
			12.3		13.375		Casing String	
Shut-in Valve	3.500		443.0					
Gas Lift Mandrel	3.500		559.0					
Gas Lift Mandrel	3.500		904.0		796.0	13.375		Casing Shoe
Gas Lift Mandrel	3.500		1104.0					
Gas Lift Mandrel	3.500		1247.0					



Job Events Summary

MAXIS Field Log

Schlumberger Job Event Summary

	Time	Elapsed Time	Depth (M)	File
Log Pass (up)	28-Oct-2008 15:09	000:07	2197.9 - 2144.4	PERFO_008LUP
Log Pass (up)	28-Oct-2008 18:02	000:15	2200.4 - 2060.9	PSP_014LUP
Log Pass (down)	28-Oct-2008 20:59	000:12	2090.8 - 2185.9	CCL_025LDP
Simulated Log	28-Oct-2008 21:14	000:40		CCL_026LUP
Log Pass (up)	29-Oct-2008 3:05	000:13	2183.3 - 2119.9	PERFO_040LUP

Output DLIS Files

DEFAULT PERFO_040LUP FN:39 PRODUCER 29-Oct-2008 03:05 2183.3 M 2119.9 M

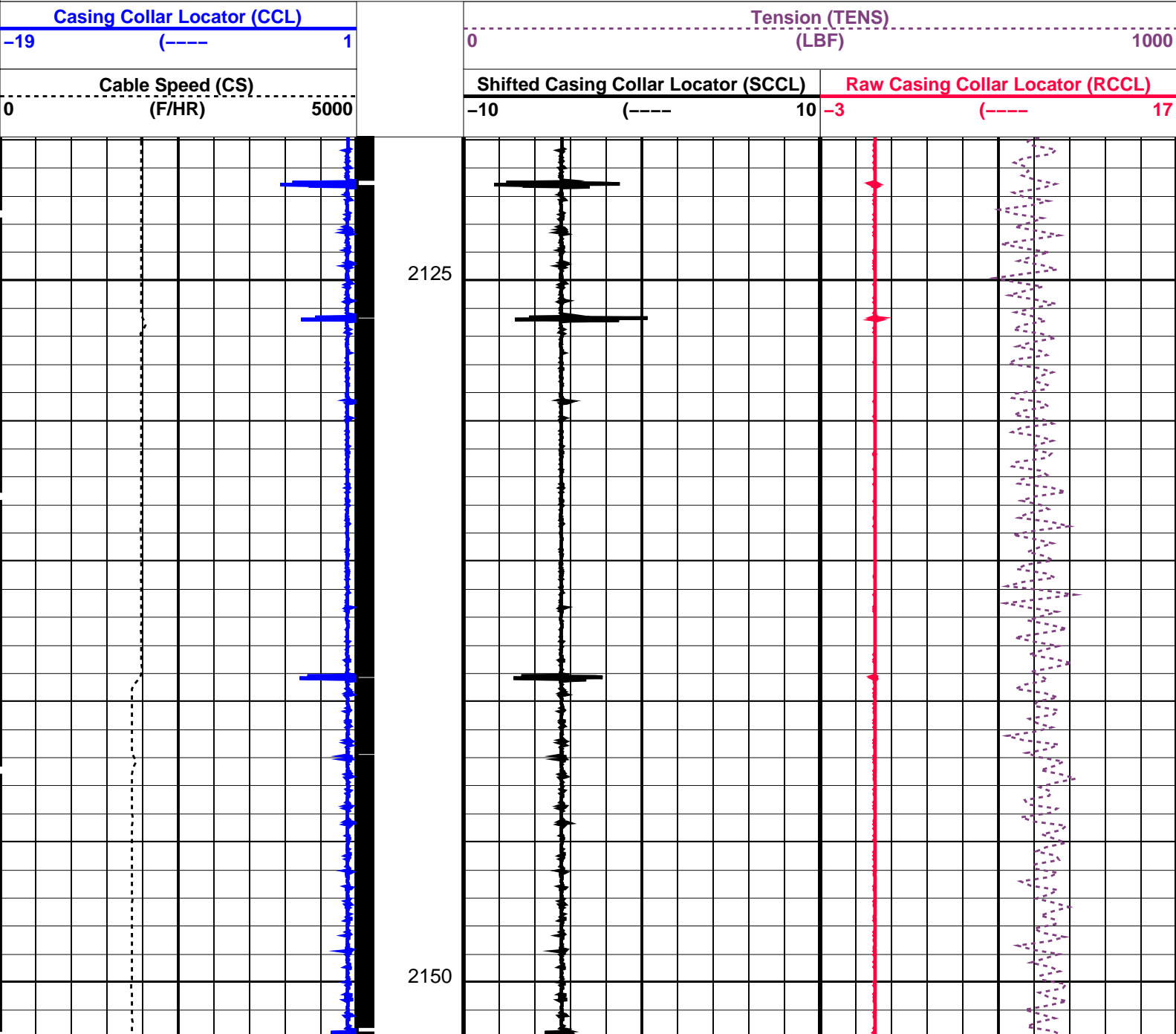
OP System Version: 16C0-147
MCM

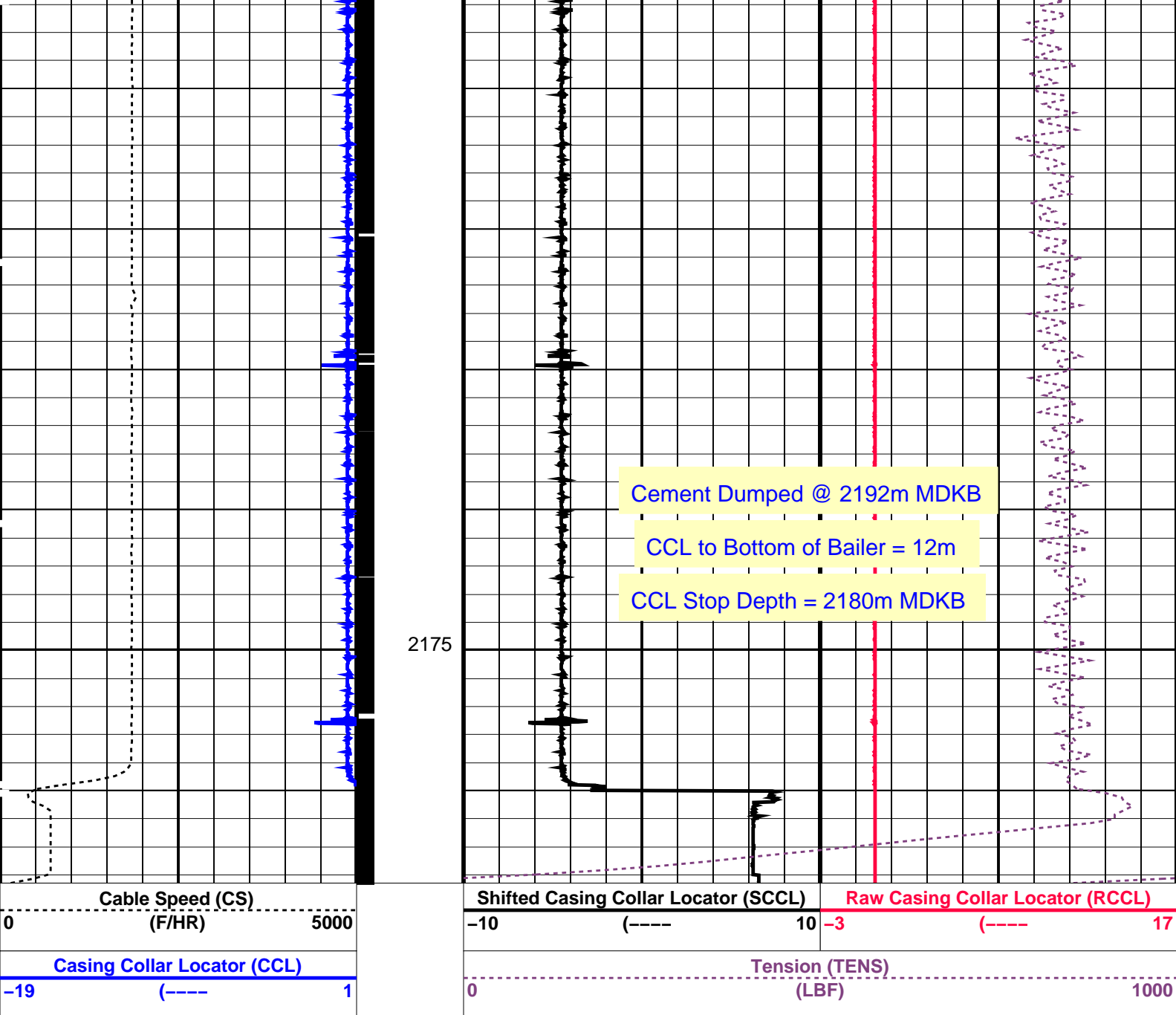
SHM_GUN 16C0-147 CCL-L 16C0-147

PIP SUMMARY

└─ Casing Collars

Time Mark Every 60 S





PIP SUMMARY

Time Mark Every 60 S

Casing Collars

Parameters

DLIS Name	Description	Value
CCLD	CCL-L: Casing Collar Locator	12 IN
CCLT	CCL reset delay	0.3 V
	CCL Detection Level	

Format: PERFO_1 Vertical Scale: 1:200

Graphics File Created: 29-Oct-2008 03:05

OP System Version: 16C0-147

MCM

SHM_GUN 16C0-147 CCL-L 16C0-147

Output DLIS Files

DEFAULT PERFO_040LUP FN:39 PRODUCER 29-Oct-2008 03:05

Water Dump Pass

MAXIS Field Log

Output DLIS Files

DEFAULT PERFO_036LUP FN:35 PRODUCER 29-Oct-2008 01:14 2183.7 M 2120.0 M

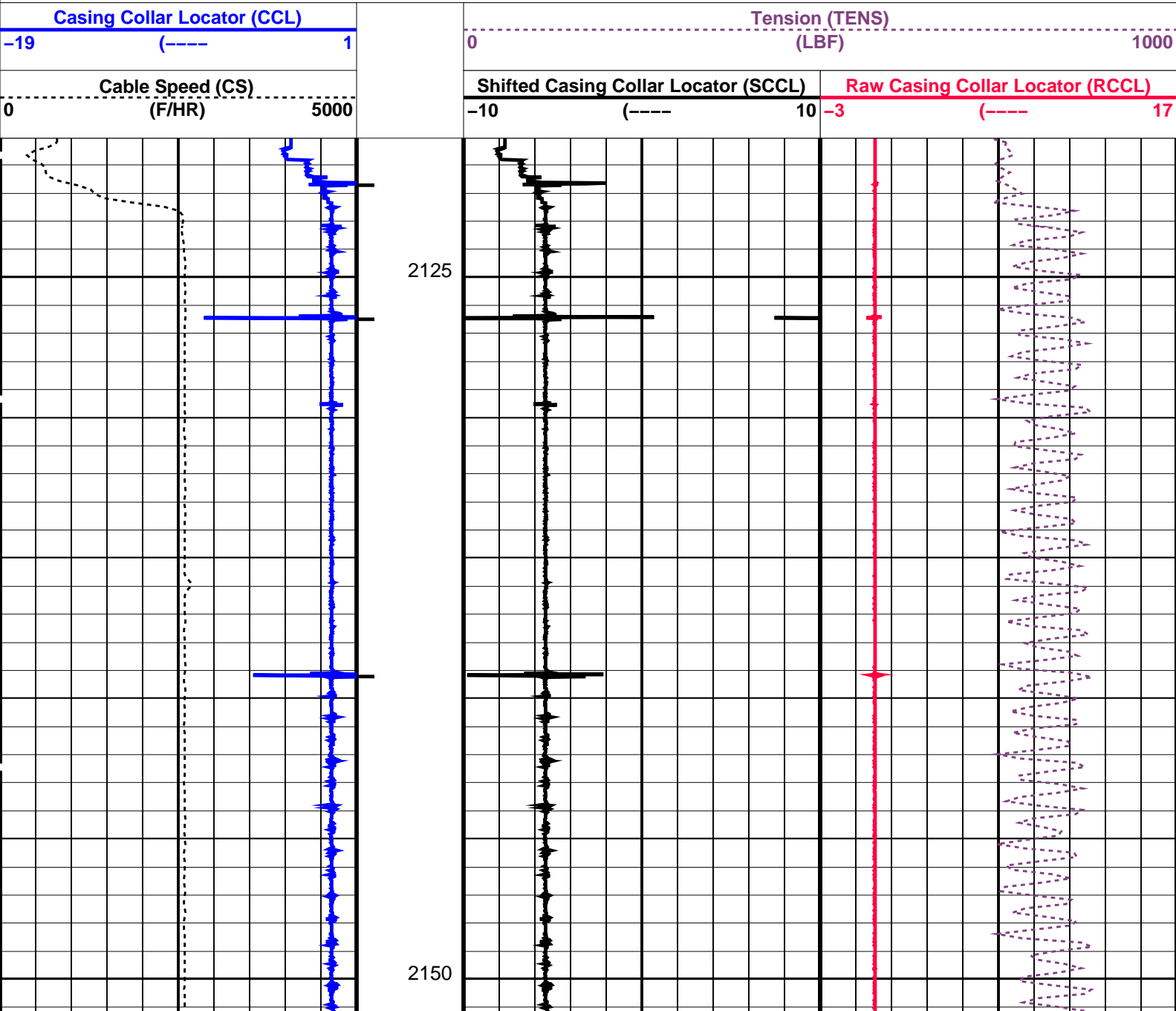
OP System Version: 16C0-147
MCM

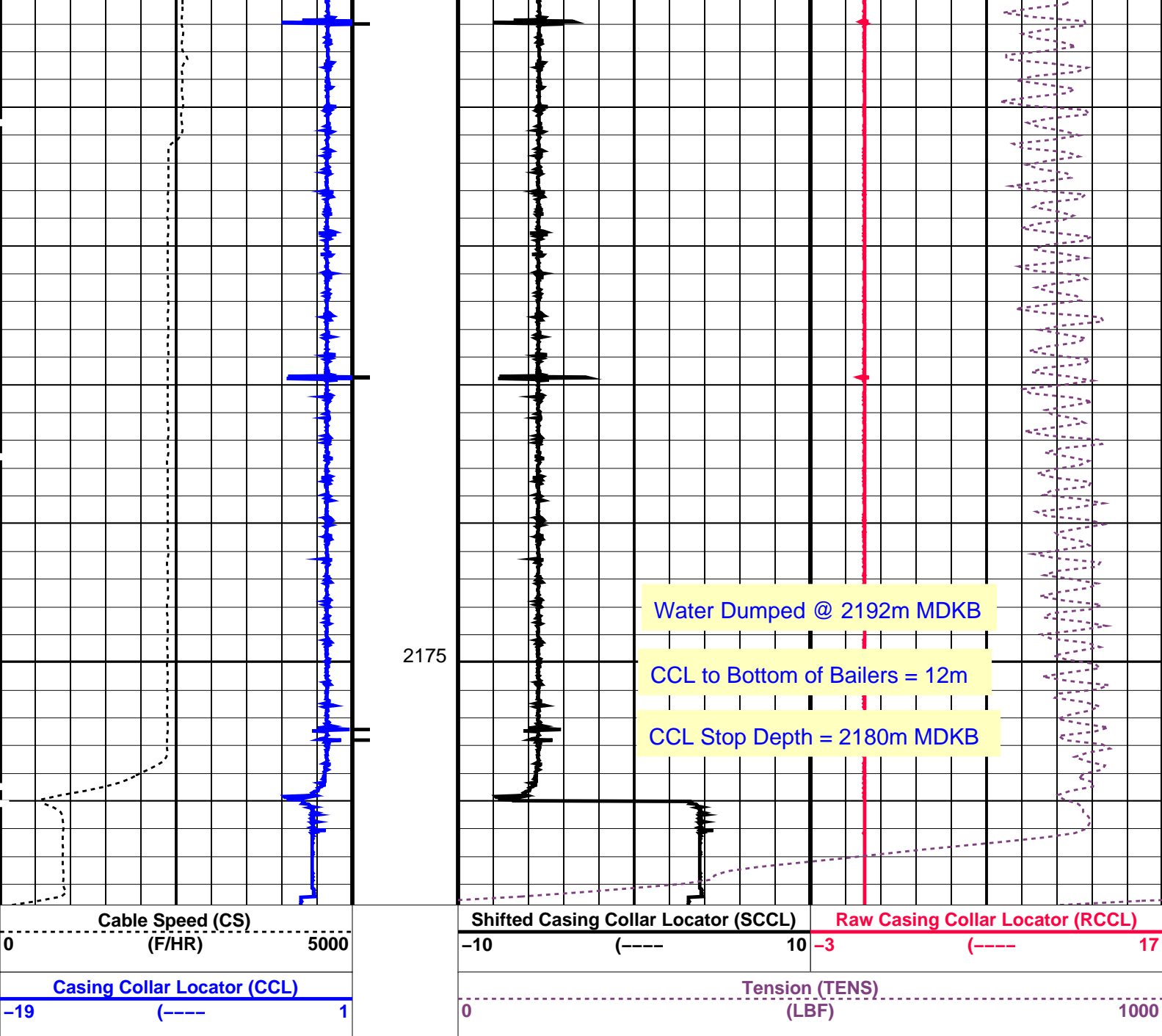
SHM_GUN 16C0-147 CCL-L 16C0-147

PIP SUMMARY

Casing Collars

Time Mark Every 60 S





PIP SUMMARY

← Casing Collars

Time Mark Every 60 S

Parameters

DLIS Name	Description	Value
CCL-L: Casing Collar Locator		
CCLD	CCL reset delay	12 IN
CCLT	CCL Detection Level	0.3 V

Format: PERFO_1 Vertical Scale: 1:200

Graphics File Created: 29-Oct-2008 01:14

OP System Version: 16C0-147

MCM

SHM_GUN 16C0-147 CCL-L 16C0-147

Output DLIS Files

DEFAULT PERFO_036LUP FN:35 PRODUCER 29-Oct-2008 01:14

Output DLIS Files

DEFAULT CCL_026LUP FN:25 PRODUCER 28-Oct-2008 21:14

OP System Version: 16C0-147
MCM

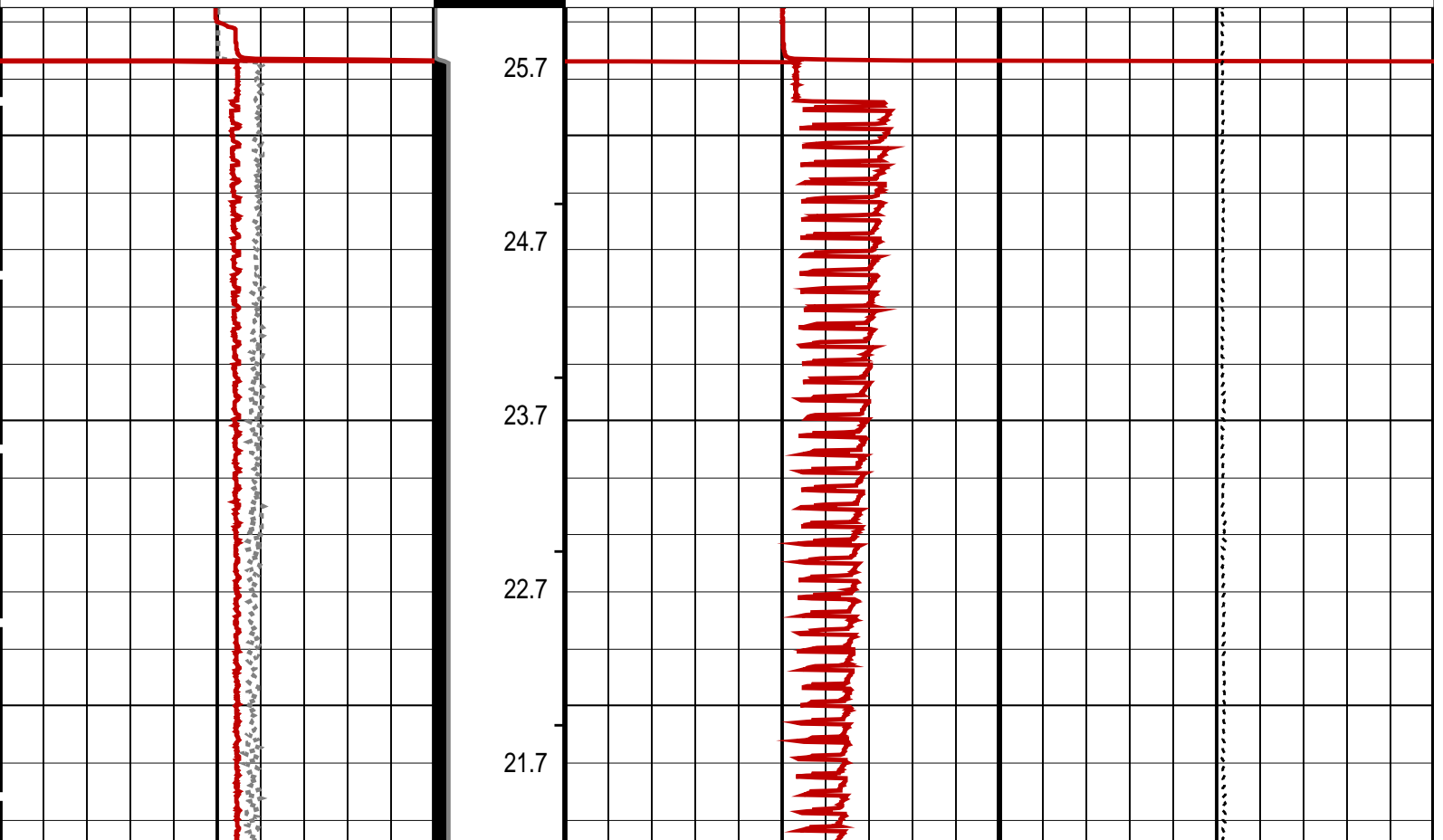
MPEX-7" Posiset MPSU-CA 16C0-147
CCL-L 16C0-147

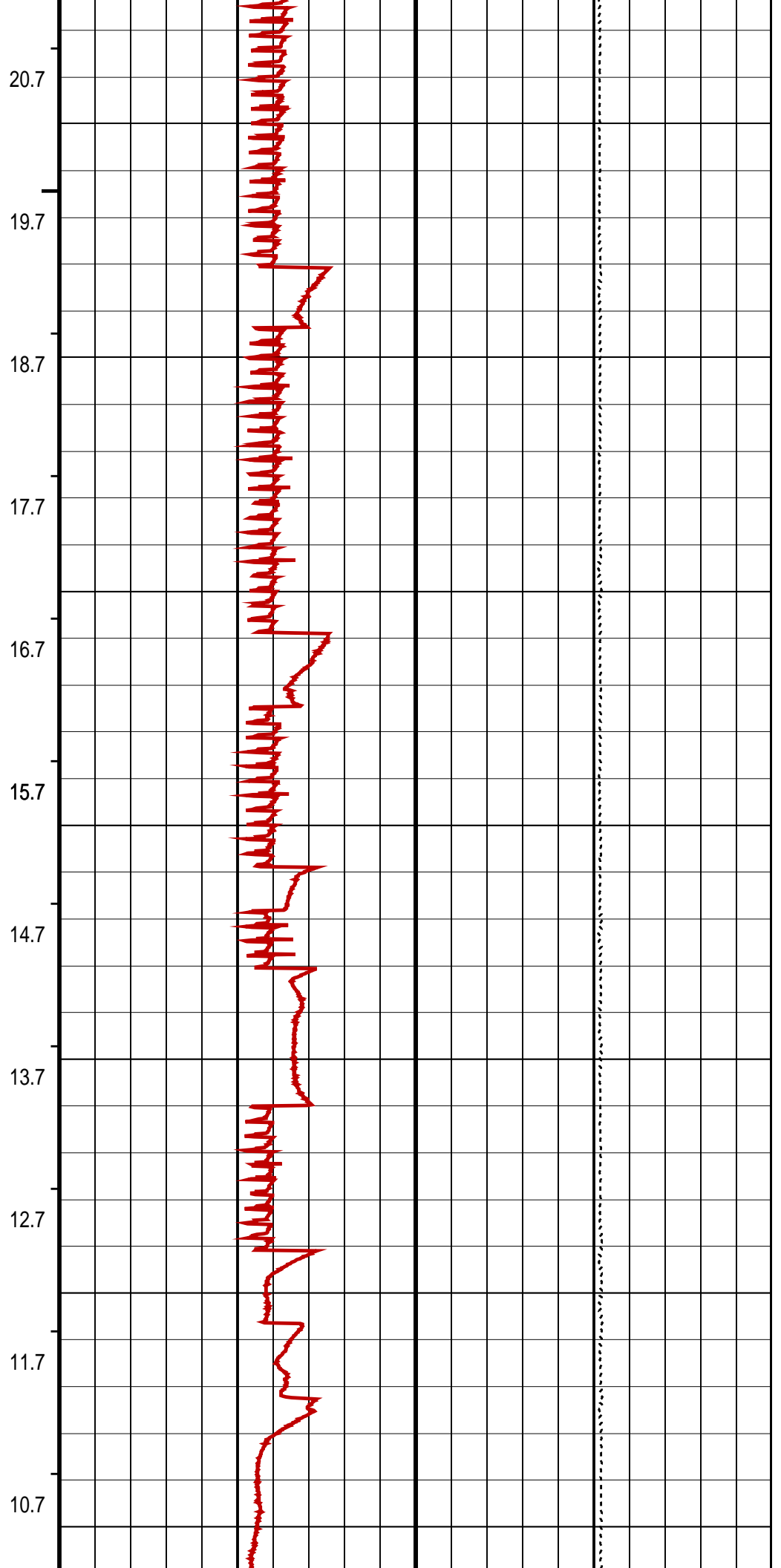
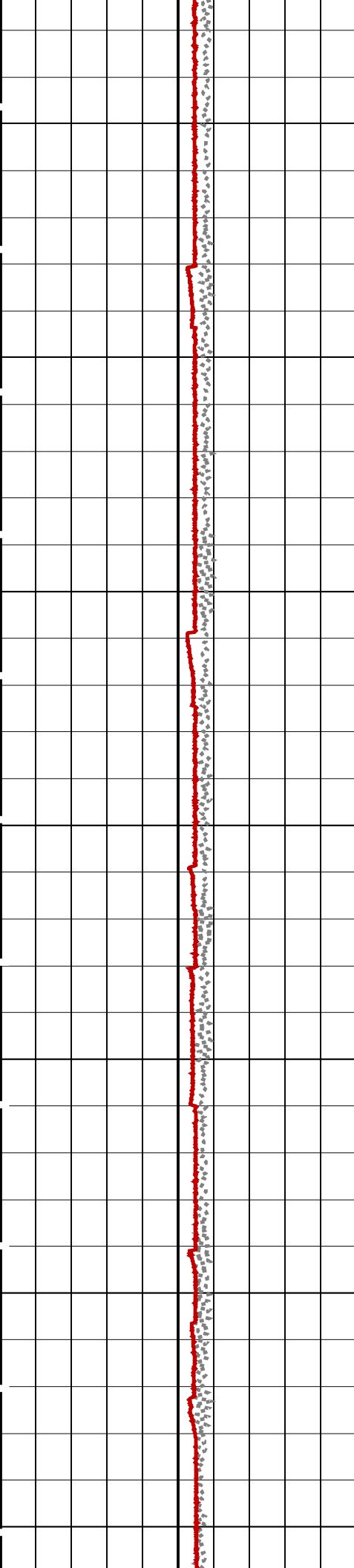
PIP SUMMARY

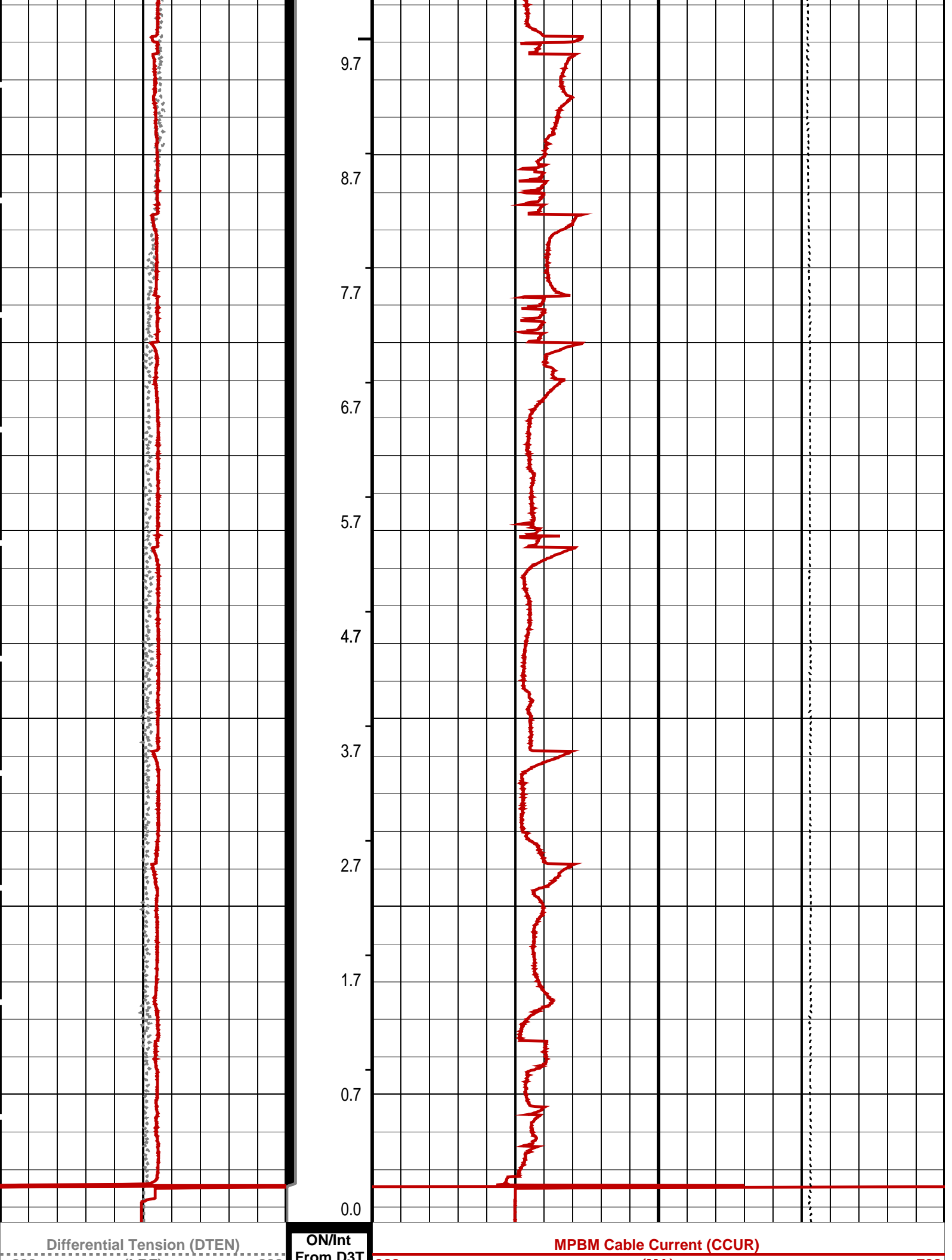
→ MPSU Run Time Every 1 MN
→ MPSU Run Time Every 10 MN

Time Mark Every 60 S

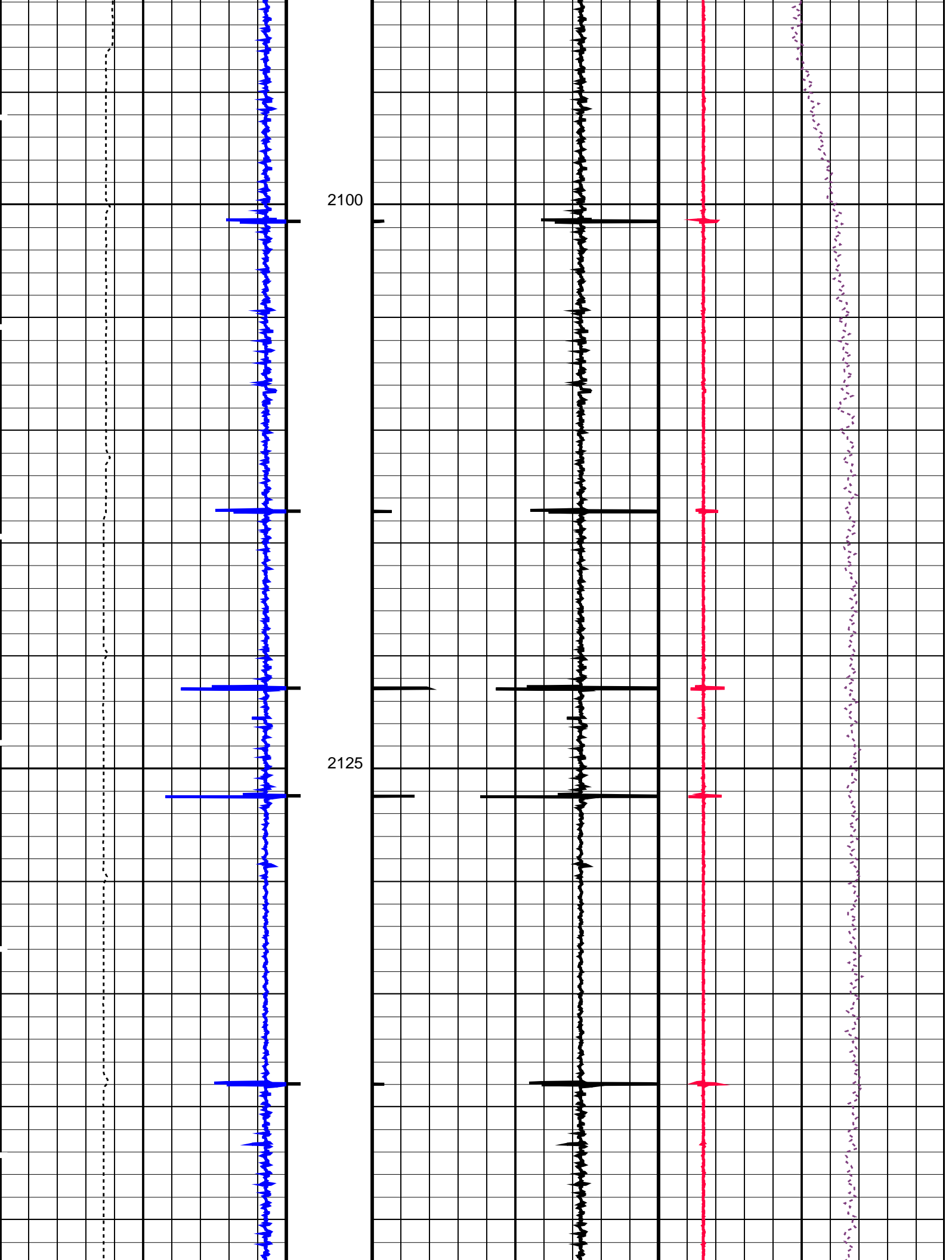
MPSU Head Voltage (HV) (V)		RUN Time (RTIM) (MN)	Tension (TENS) (LBF)	
250	350	MPSU Run Status (STAT)	2000	0
		0 (----10		
Differential Tension (DTEN) (LBF)		ON/Int From D3T to STAT	MPBM Cable Current (CCUR) (MA)	
-200	200		300	700

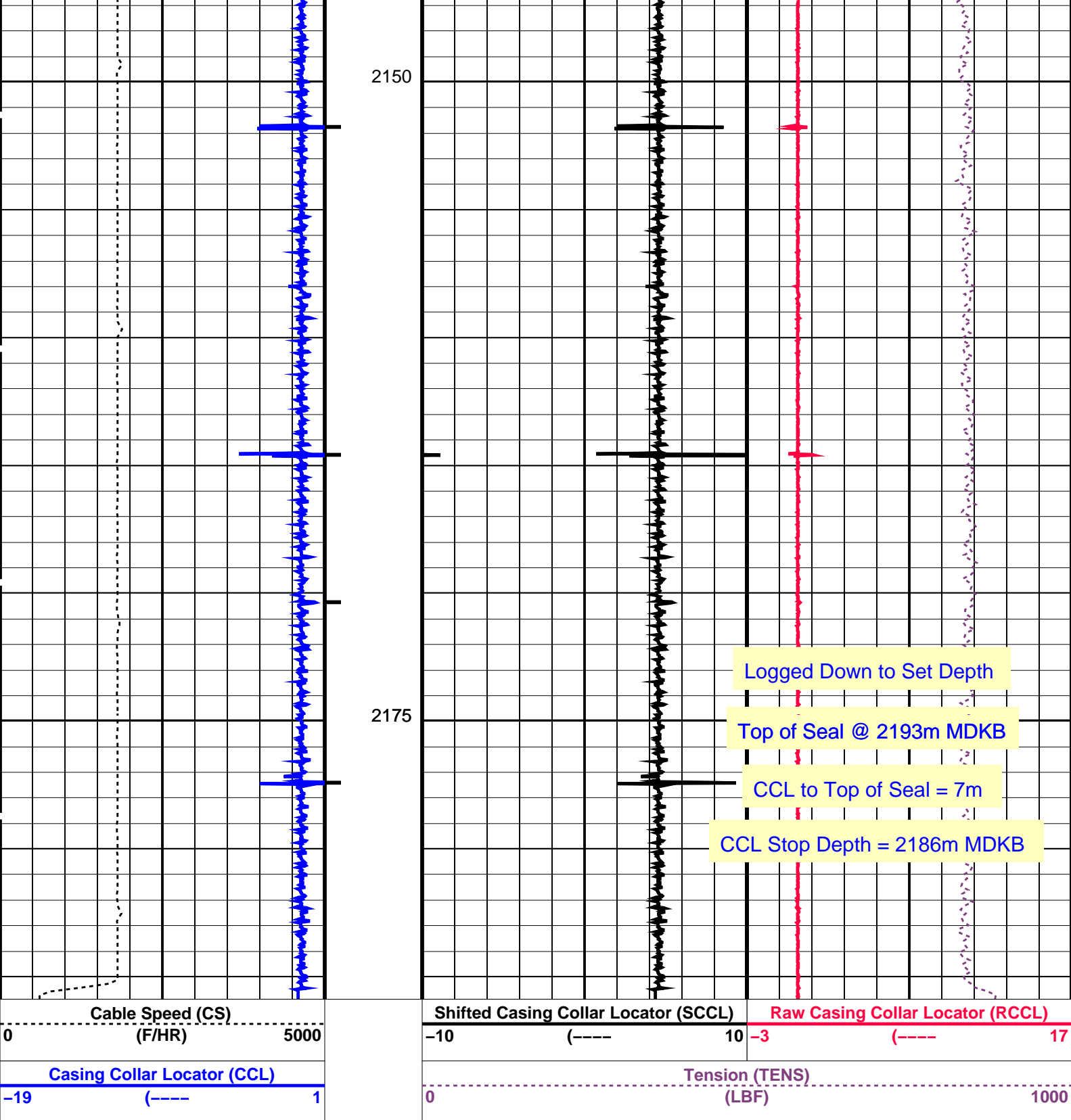






200	(LBF)	200	FROM DSI to STAT	300	(MA)	700
MPSU Head Voltage (HV)		MPSU Run Status (STAT)	Tension (TENS)			
250	(V)					
		0 (----10	2000 (LBF) 0			
		RUN Time (RTIM) (MN)				
PIP SUMMARY						
↵ MPSU Run Time Every 1 MN						
↵ MPSU Run Time Every 10 MN						
Time Mark Every 60 S						
Parameters						
DLIS Name		Description		Value		
IPUMP		MPSU-CA: MECHANICAL PLUGBACK SETTING UNIT Intensifier Pump		TRUE		
Format: MPBT		Vertical Scale: 1:600		Graphics File Created: 28-Oct-2008 21:14		
OP System Version: 16C0-147						
MCM						
MPEX-7" CCL-L		Posiset 16C0-147		MPSU-CA		16C0-147
Output DLIS Files						
DEFAULT		CCL_026LUP		FN:25		PRODUCER 28-Oct-2008 21:14
Schlumberger						
7" Posiset Plug Log Down to Set Depth						
MAXIS Field Log						
Input DLIS Files						
DEFAULT		Flip_CCL_042LUP		PRODUCER		29-Oct-2008 03:23 2185.9 M 2090.8 M
Output DLIS Files						
DEFAULT		PERFO_043PUP		FN:41		PRODUCER 29-Oct-2008 03:24 2185.9 M 2090.8 M
OP System Version: 16C0-147						
MCM						
SHM_GUN		16C0-147		CCL-L		16C0-147
PIP SUMMARY						
← Casing Collars						
Time Mark Every 60 S						
Casing Collar Locator (CCL)		Tension (TENS)				
-19	(----	1	0 (LBF) 1000			
Cable Speed (CS)		Shifted Casing Collar Locator (SCCL)		Raw Casing Collar Locator (RCCL)		
0	(F/HR)	5000	-10 (----	10	-3 (----	17





PIP SUMMARY

— Casing Collars

Time Mark Every 60 S

Parameters

DLIS Name	Description	Value
CCLD	CCL-L: Casing Collar Locator	12 IN
CCLT	CCL reset delay	0.3 V
	CCL Detection Level	
	System and Miscellaneous	
DO	Depth Offset for Playback	0.0 M
PP	Playback Processing	NORMAL

SHM_GUN 16C0-147 CCL-L 16C0-147

Input DLIS Files

DEFAULT Flip_CCL_042LUP PRODUCER 29-Oct-2008 03:23 2185.9 M 2090.8 M

Output DLIS Files

DEFAULT PERFO_043PUP FN:41 PRODUCER 29-Oct-2008 03:24



2.13" Dummy Plug Pass

MAXIS Field Log

Company: Esso Australia Pty Ltd. Well: A-9b

Input DLIS Files

DEFAULT PSP_014LUP FN:13 PRODUCER 28-Oct-2008 18:02 2200.4 M 2060.9 M

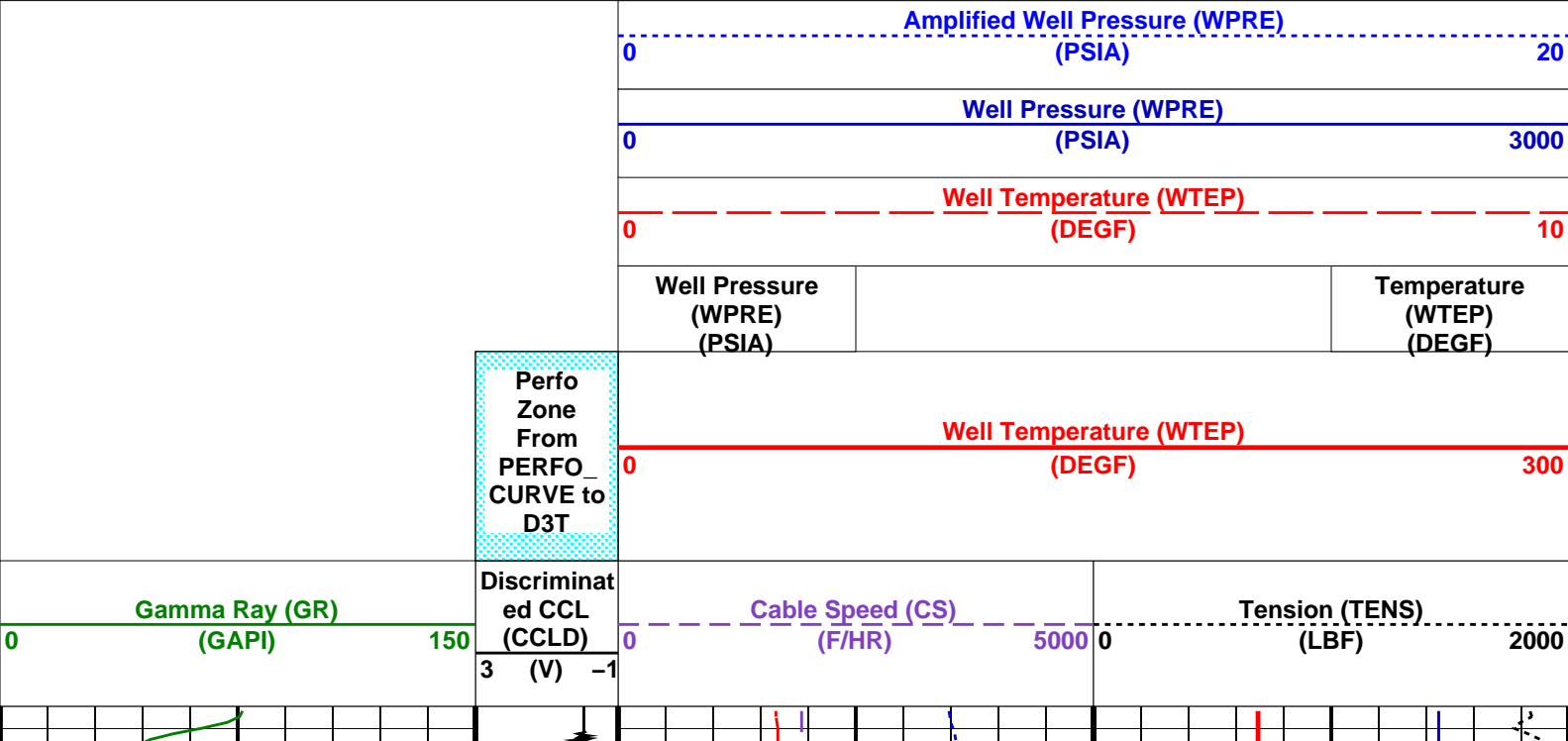
Output DLIS Files

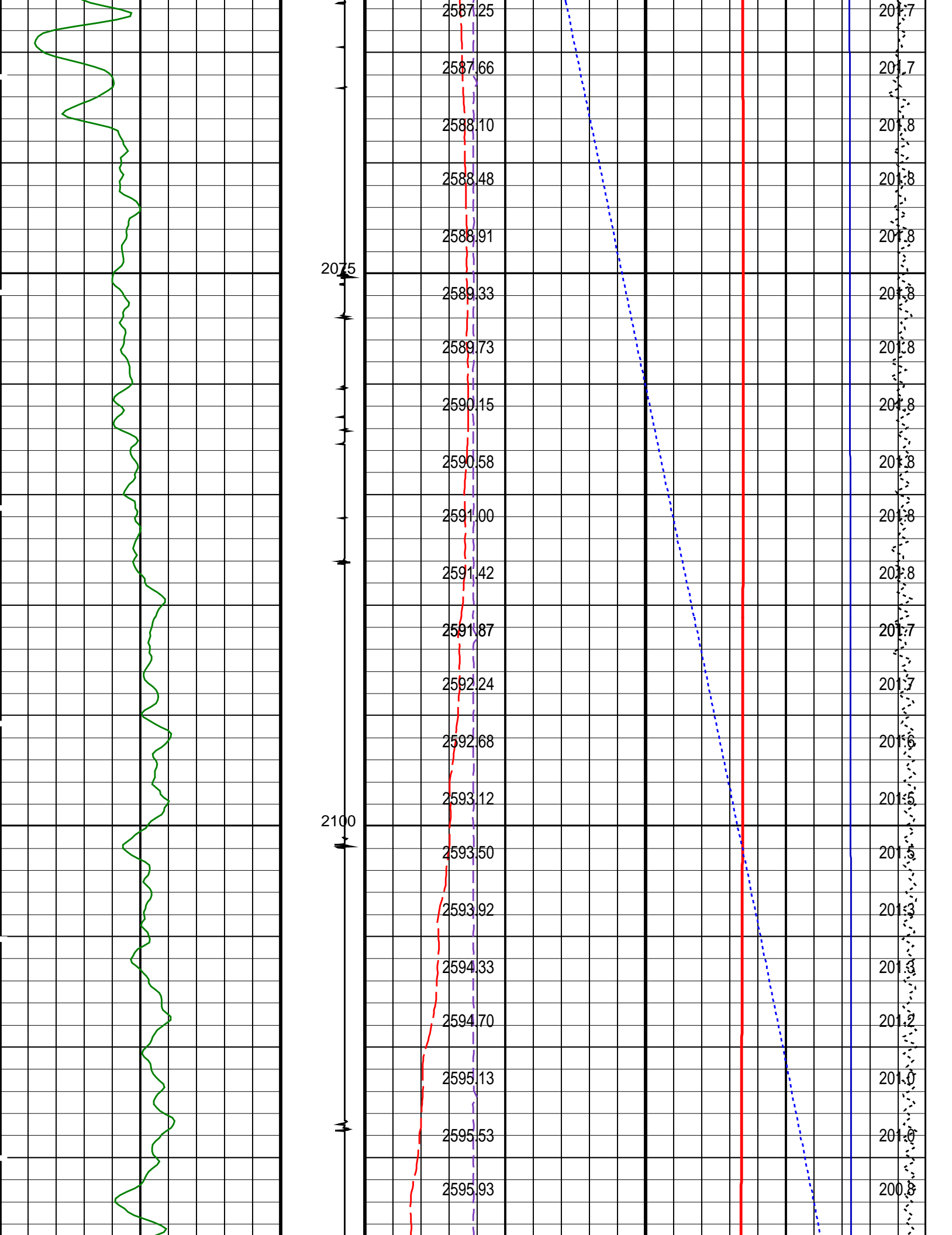
DEFAULT PSP_015PUP FN:14 PRODUCER 28-Oct-2008 18:17 2200.8 M 2061.4 M

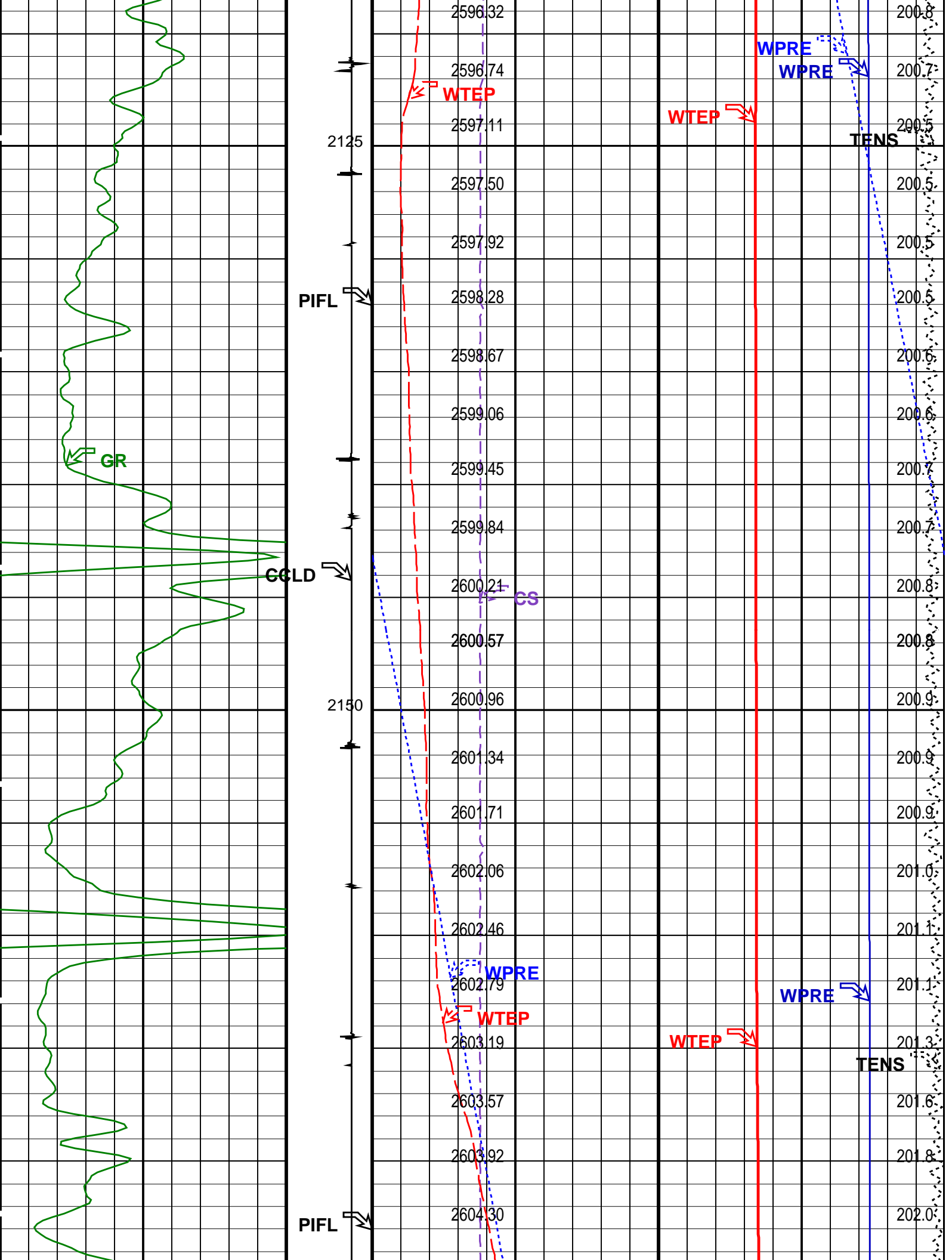
PSPT-A/B 16C0-147

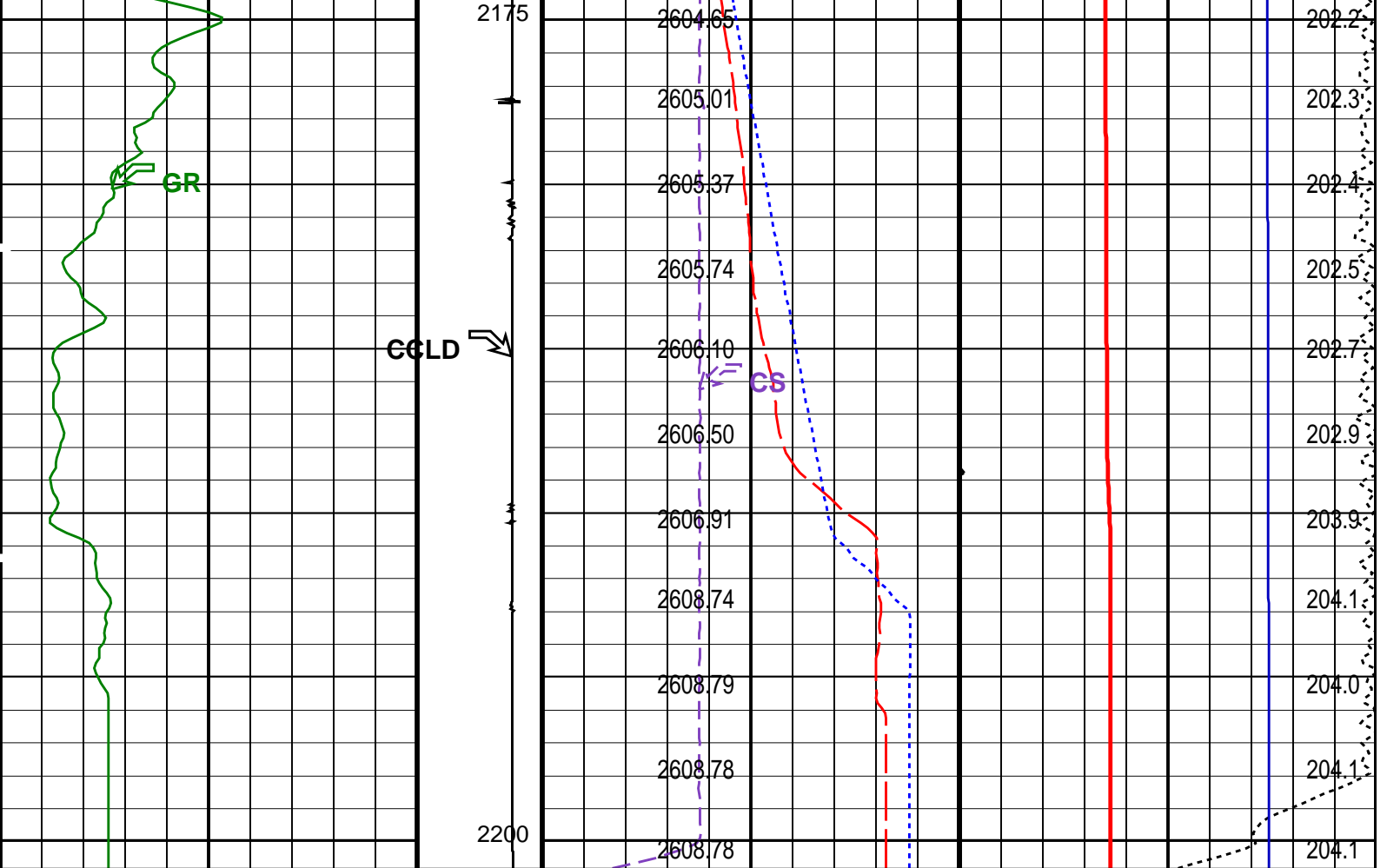
PIP SUMMARY

Time Mark Every 60 S









Gamma Ray (GR) (GAPI)		Discriminat ed CCL (CCLD)	Cable Speed (CS) (F/HR)		Tension (TENS) (LBF)	
0	150	3 (V) -1	0	5000	0	2000

Perfo Zone From PERFO_ CURVE to D3T	Well Temperature (WTEP) (DEGF)		0	300
	Well Pressure (WPRE) (PSIA)	Temperature (WTEP) (DEGF)		
	Well Temperature (WTEP) (DEGF)		0	10
	Well Pressure (WPRE) (PSIA)		0	3000
	Amplified Well Pressure (WPRE) (PSIA)		0	20

PIP SUMMARY

Time Mark Every 60 S


Format: PSP_1 Vertical Scale: 1:200 Graphics File Created: 28-Oct-2008 18:17

OP System Version: 16C0-147
MCM

PSPT-A/B 16C0-147

Parameters		
DLIS Name	Description	Value

System and Miscellaneous		Depth Offset for Playback		0.4		M
DO		Playback Processing		NORMAL		
PP						
Input DLIS Files						
DEFAULT	PSP_014LUP	FN:13	PRODUCER	28-Oct-2008 18:02	2200.4 M	2060.9 M
Output DLIS Files						
DEFAULT	PSP_015PUP	FN:14	PRODUCER	28-Oct-2008 18:17		

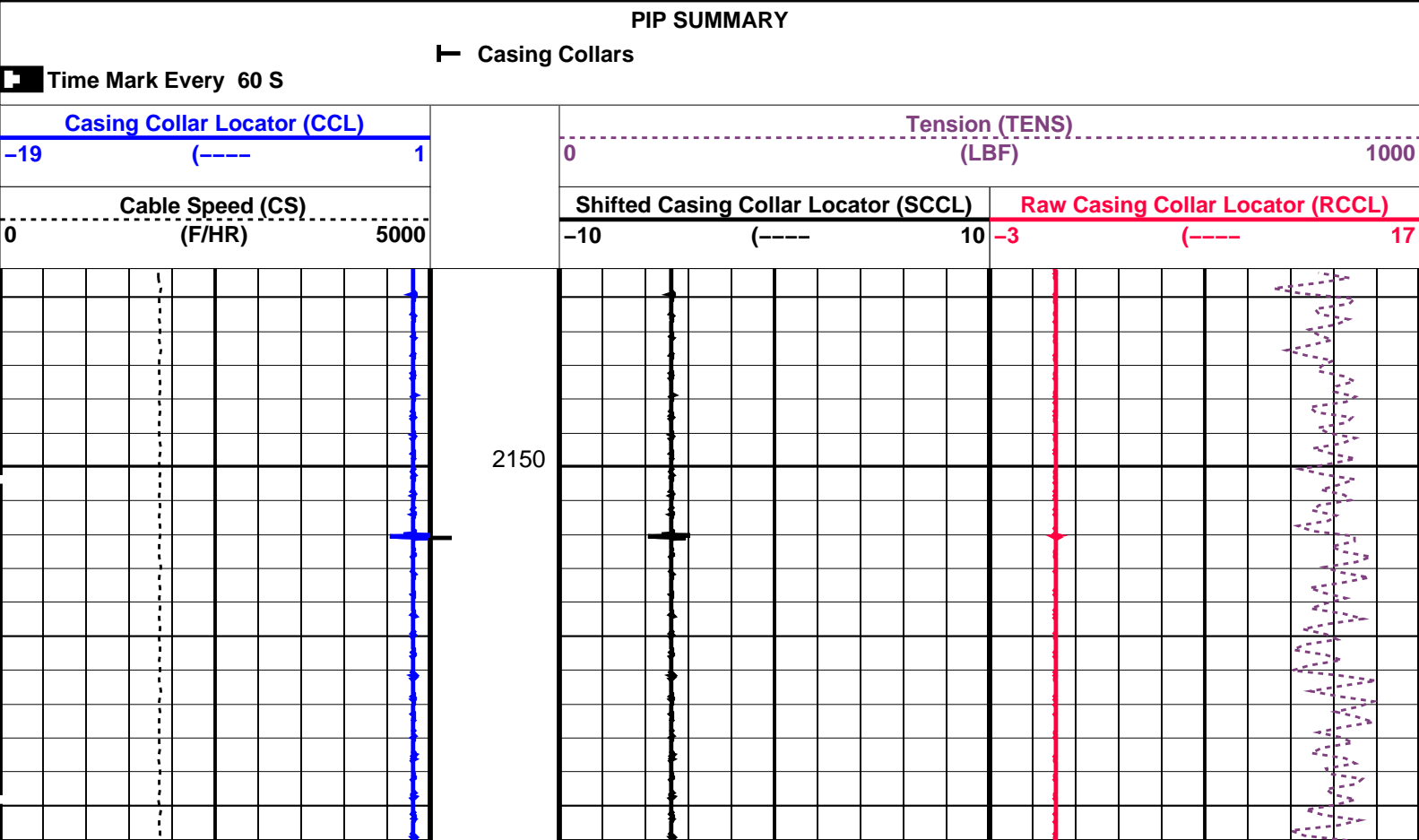


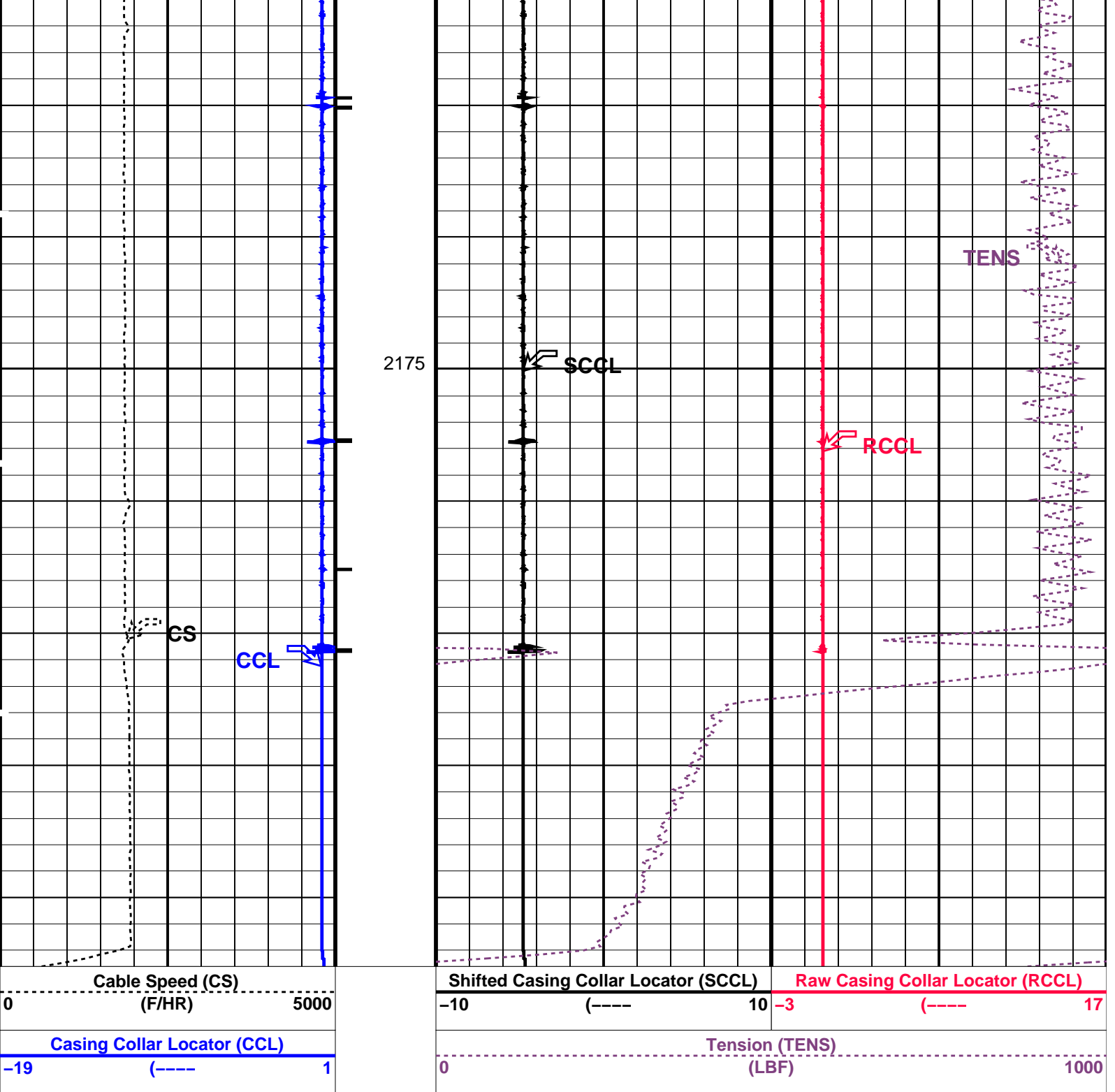
Dump Bailer
Depth Determination

MAXIS Field Log

Input DLIS Files					
DEFAULT	PERFO_008LUP	FN:7	PRODUCER	28-Oct-2008 15:09	2197.9 M 2144.4 M
Output DLIS Files					
DEFAULT	PERFO_009PUP	FN:8	PRODUCER	28-Oct-2008 15:17	2197.6 M 2144.1 M

OP System Version: 16C0-147					
MCM					
SHM_GUN	16C0-147	CCL-L	16C0-147		





PIP SUMMARY

Time Mark Every 60 S

Casing Collars

DLIS Name

Description

Value

CCLD	CCL-L: Casing Collar Locator		
CCLT	CCL reset delay	12	IN
	CCL Detection Level	0.3	V
DO	System and Miscellaneous		
PP	Depth Offset for Playback	-0.3	M
	Playback Processing	NORMAL	

Format: PERFO_1 Vertical Scale: 1:200

Graphics File Created: 28-Oct-2008 15:17

OP System Version: 16C0-147

MCM

SHM_GUN	16C0-147	CCL-L	16C0-147
Input DLIS Files			
DEFAULT	PERFO_008LUP	FN:7	PRODUCER 28-Oct-2008 15:09 2197.9 M 2144.4 M
Output DLIS Files			
DEFAULT	PERFO_009PUP	FN:8	PRODUCER 28-Oct-2008 15:17
<div> <div>Company:</div> <div>Esso Australia Pty Ltd.</div> <div>Schlumberger</div> </div> <div> <div>Well:</div> <div>A-9b</div> </div> <div> <div>Field:</div> <div>Bream A</div> </div> <div> <div>Rig :</div> <div>Prod4 / Crane</div> </div> <div> <div>Country:</div> <div>Australia</div> </div>			
7" Posiset Plug Setting Record			