



Compact

COMPENSATED SONIC

1:500 TVD

COMPANY **ESSO AUSTRALIA PTY LTD**

WELL **BREAM A6A**

FIELD **BREAM**

PROVINCE/COUNTY **BASS STRAIT**

COUNTRY/STATE **AUSTRALIA**

LOCATION **38DEG 29' 58.784"S 147DEG 46' 20.421" E**

5738461 490 N 567347.120 E **FIELD PRINT**

LSD SEC TWP RGE Other Services
DUAL LATEROLOG

API Number PHOTO DENSITY
Permit Number COMPENSATED NEUTRON

Permanent Datum MSL , Elevation 0.0 metres

Log Measured From RT @ 32.82 M above Permanent Datum

Drilling Measured From RT Elevations:
KB 32.82 metres
DF metres
GL -59.40 metres

Date 14-FEB-2006

Run Number ONE metres

Depth Driller 1994.67 metres

Depth Logger 1993.29 metres

First Reading 1990.08 metres

Last Reading 803.75 metres

Casing Driller 803.75 metres

Casing Logger 803.75 metres

Bit Size 8.50 inches

Hole Fluid Type KCL/GYL/POLY

Density / Viscosity 10.05 lb/USg 59.00 CP

PH / Fluid Loss 9.30 2.90

Sample Source FLOWLINE

Rm @ Measured Temp 0.108 @ 25.0 ohm-m

Rmf @ Measured Temp 0.086 @ 25.0 ohm-m

Rmc @ Measured Temp 0.153 @ 25.0 ohm-m

Source Rmf / Rmc PRESS ohm-m

Rm @ BHT 0.046 @ 88.0 ohm-m

Time Since Circulation 45.3 hrs

Max Recorded Temp 91.20 deg C

Equipment Name 5" CWS/CML

Equipment / Base 1 SALE

Recorded By R. TENCH, B. MOSS

Witnessed By TREVOR LOBO

CIRC STOPPED 12:10 12/02

BOREHOLE RECORD

Bit Size inches 8.500	Depth From metres 850.50	Depth To metres 3256.00
-----------------------------	--------------------------------	-------------------------------

CASING RECORD

Type	Size inches	Depth From metres	Shoe Depth metres	Weight pounds/ft
K-55	10.750	0.00	850.50	40.50

REMARKS

RIG: NABORS 453

5" SHUTTLE/MEMORY COMPACT OPERATION.
CREW: R TENCH , B MOSS , B GOODWIN, M KOLCZE.

FIELD FINAL LOGS TO BE CORRELATED TO ANADRILL GAMMA LOG.

MAX. TEMPERATURE: 91.2 DEG C AT 3211.7 m MD
MAX. INCLINATION: 68.2 DEG AT 1656.24m MD
MAX. DOGLEG SERVERITY: 7.6 DEG/30m AT 881.48 m MD
DEPLOYMENT ANGLE: 67.28 DEG

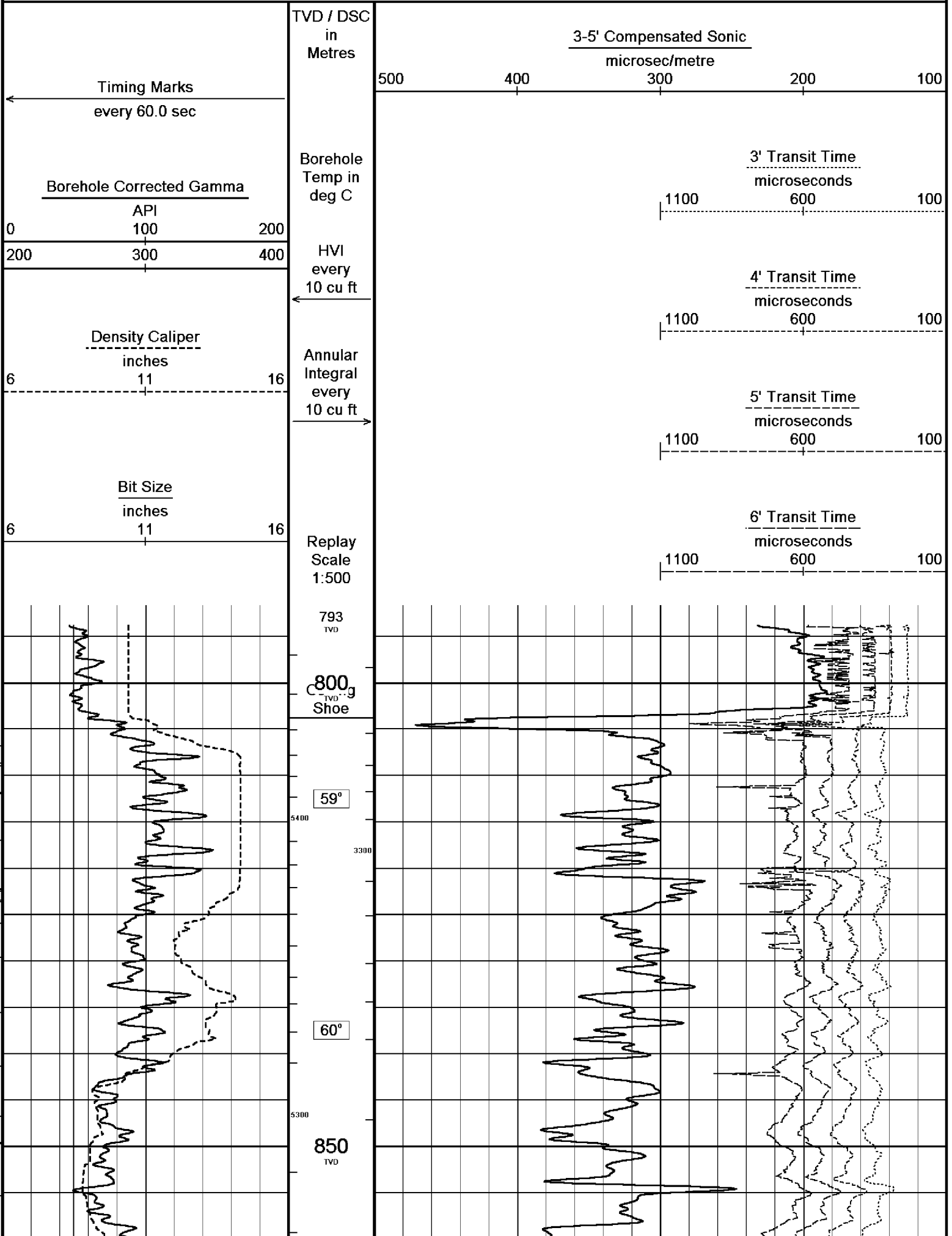
HVOL: 5444 FT^3
AVOL: 3342 FT^3

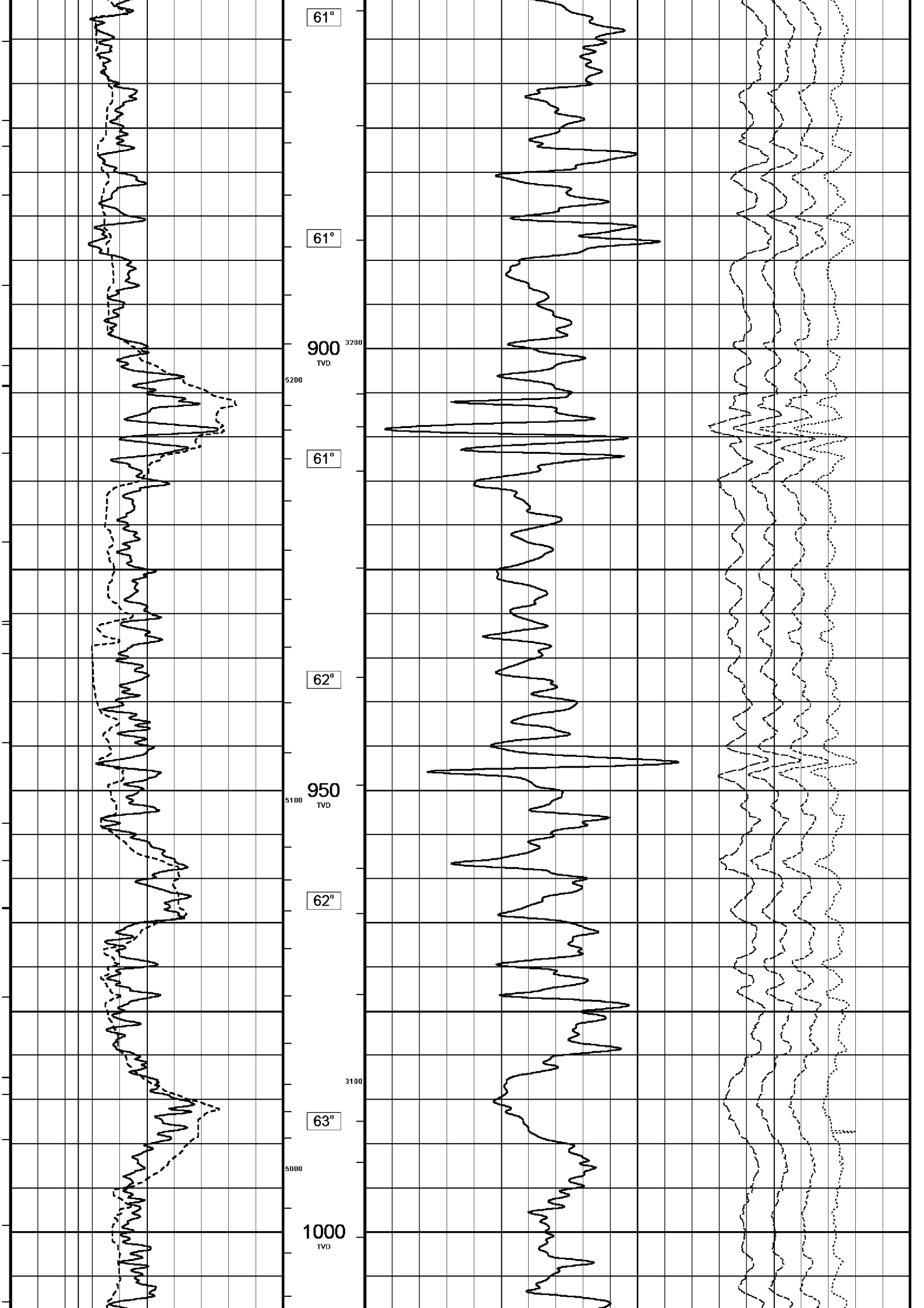
HVOL (TO 2200mMD) : 2015 FT^3
AVOL (TO 2200mMD) : 1106 FT^3

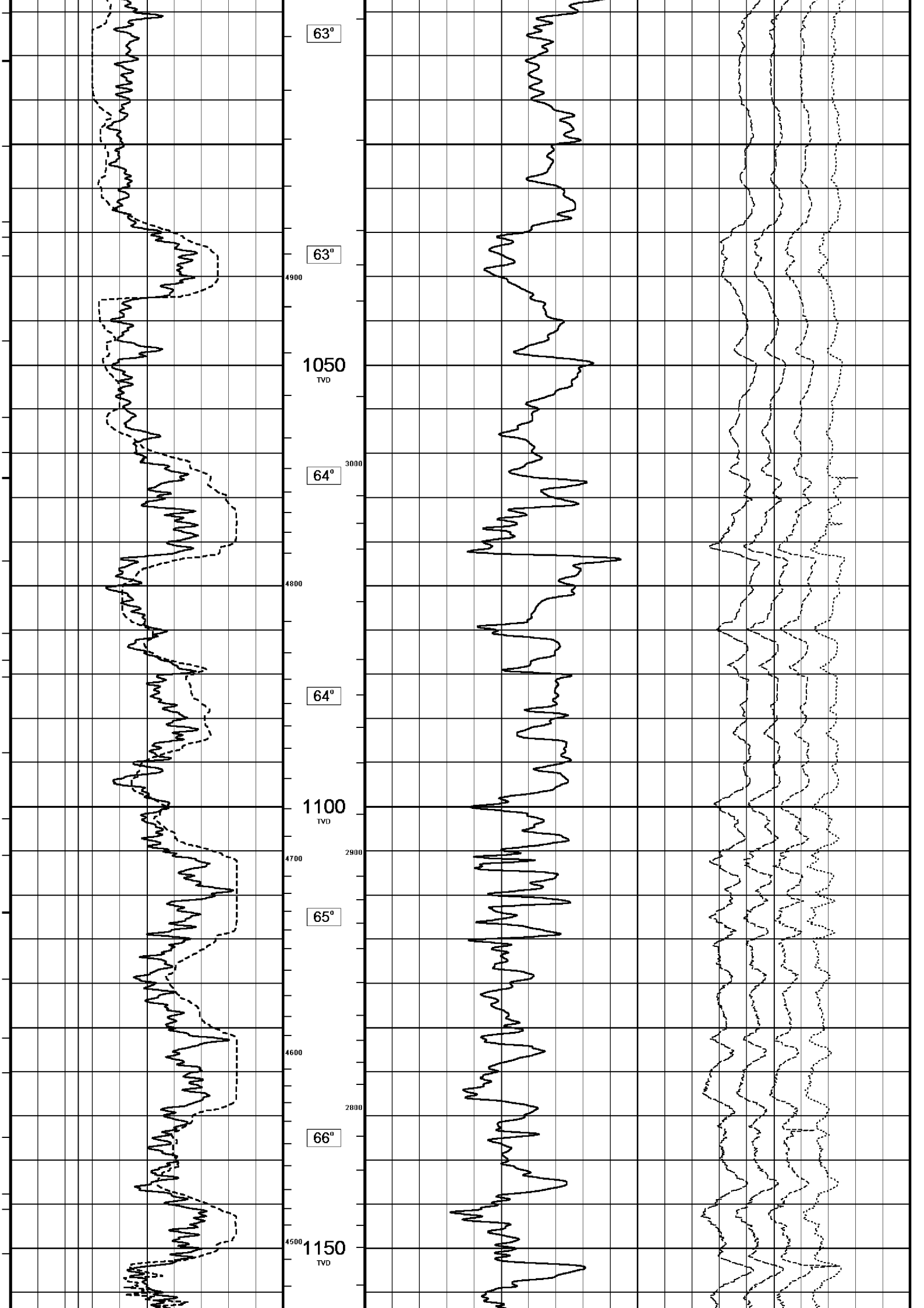
All interpretations are opinions based on inferences from electrical or other measurements and we cannot, and do not, guarantee the accuracy or correctness of any interpretations, and we shall not, except in the case of gross or wilful negligence on our part, be liable or responsible for any loss, costs, damages or expenses incurred or sustained by anyone resulting from any interpretation made by any of our officers, agents or

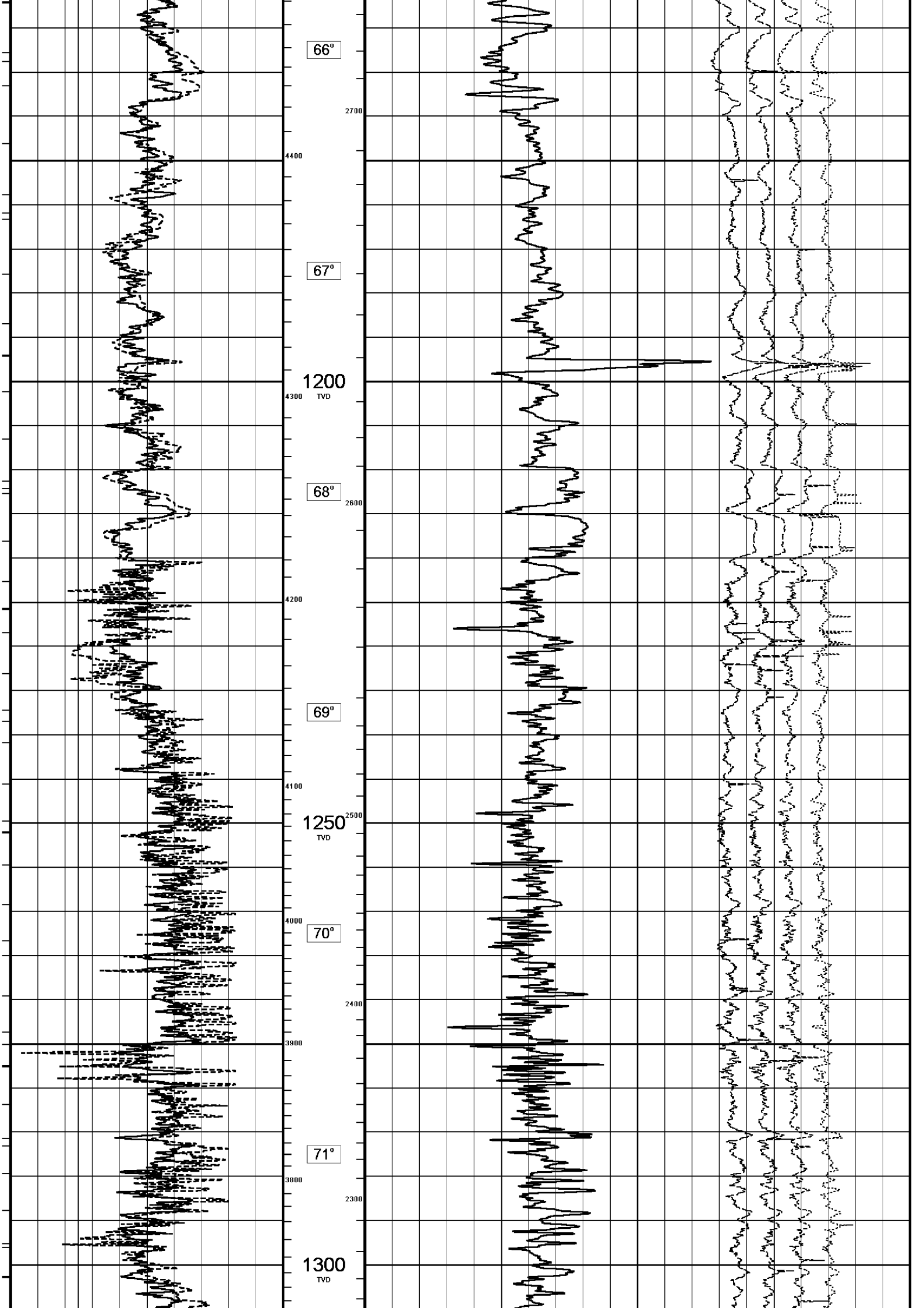
MAIN LOG 1:500

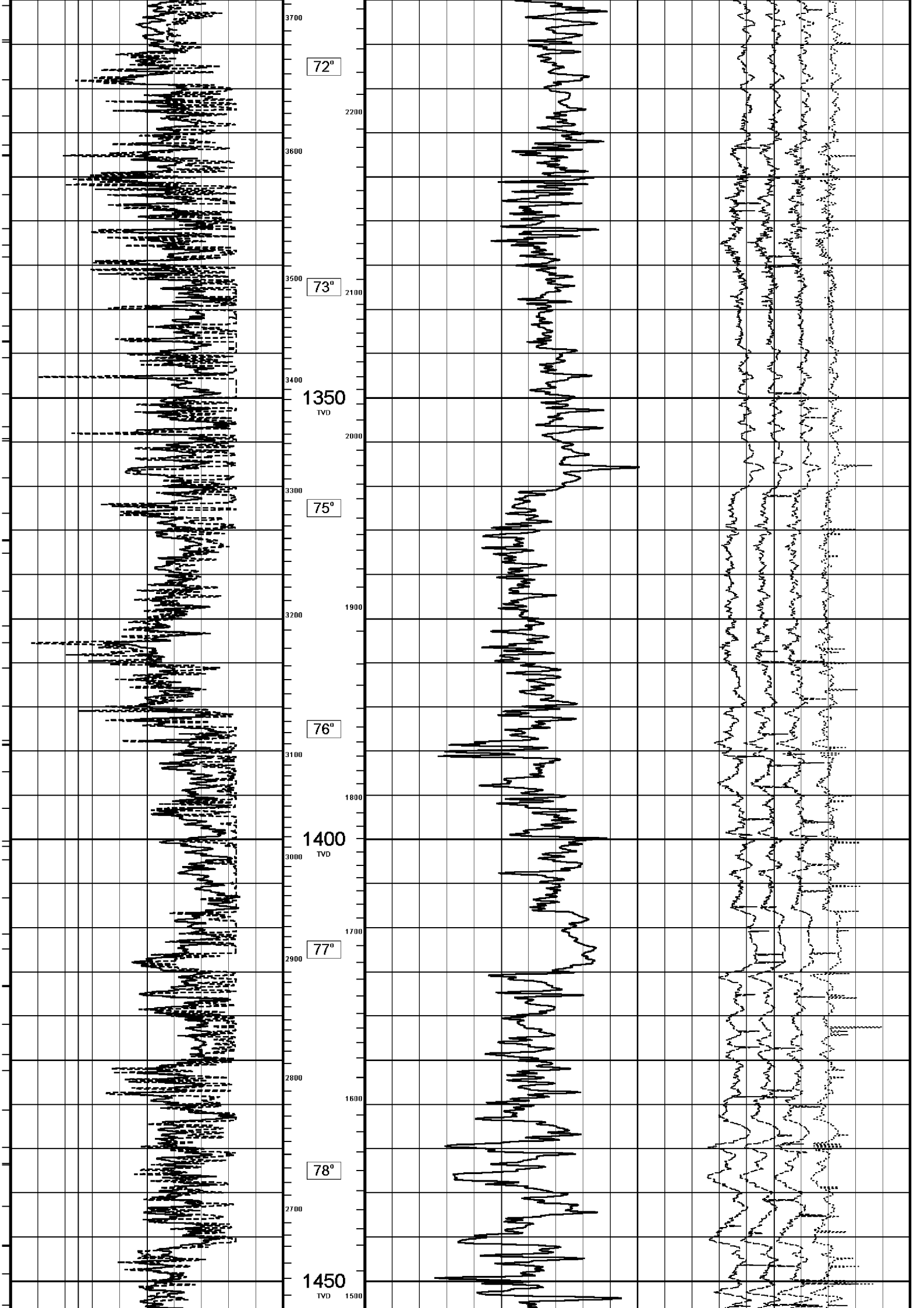
Depth Based Data - Maximum Sampling Increment 10.0cm Plotted on 15-FEB-2006 06:38
 Filename: C:\logs\BMA_A6A\FIELD DATA\BMA_A6A_MAIN_LOG2.dta Recorded on 14-FEB-2006 22:51
 System Configuration Dates: Logged 17-JUN-2004: Processed 17-JUN-2004: Plotted 17-JUN-2004:

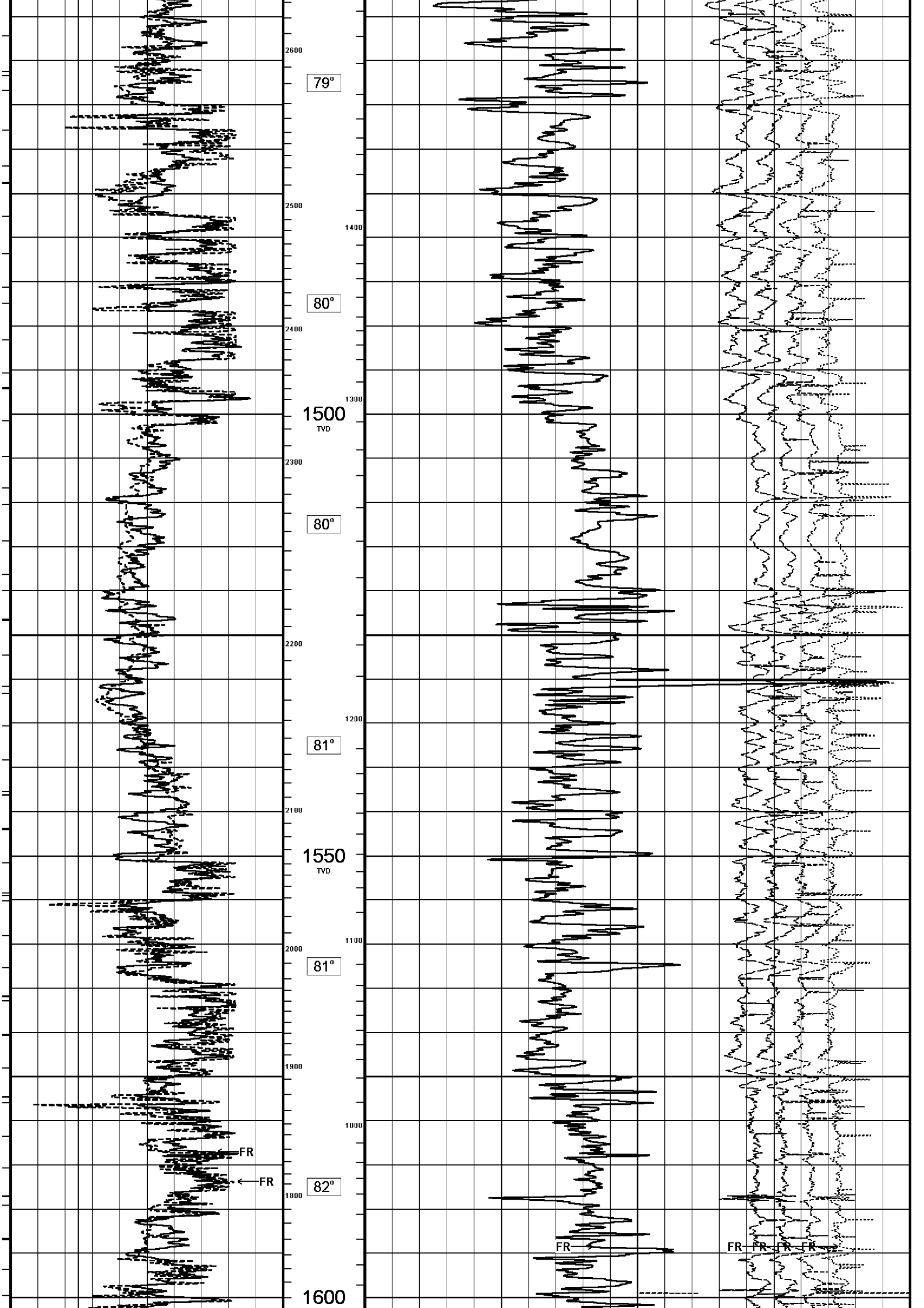


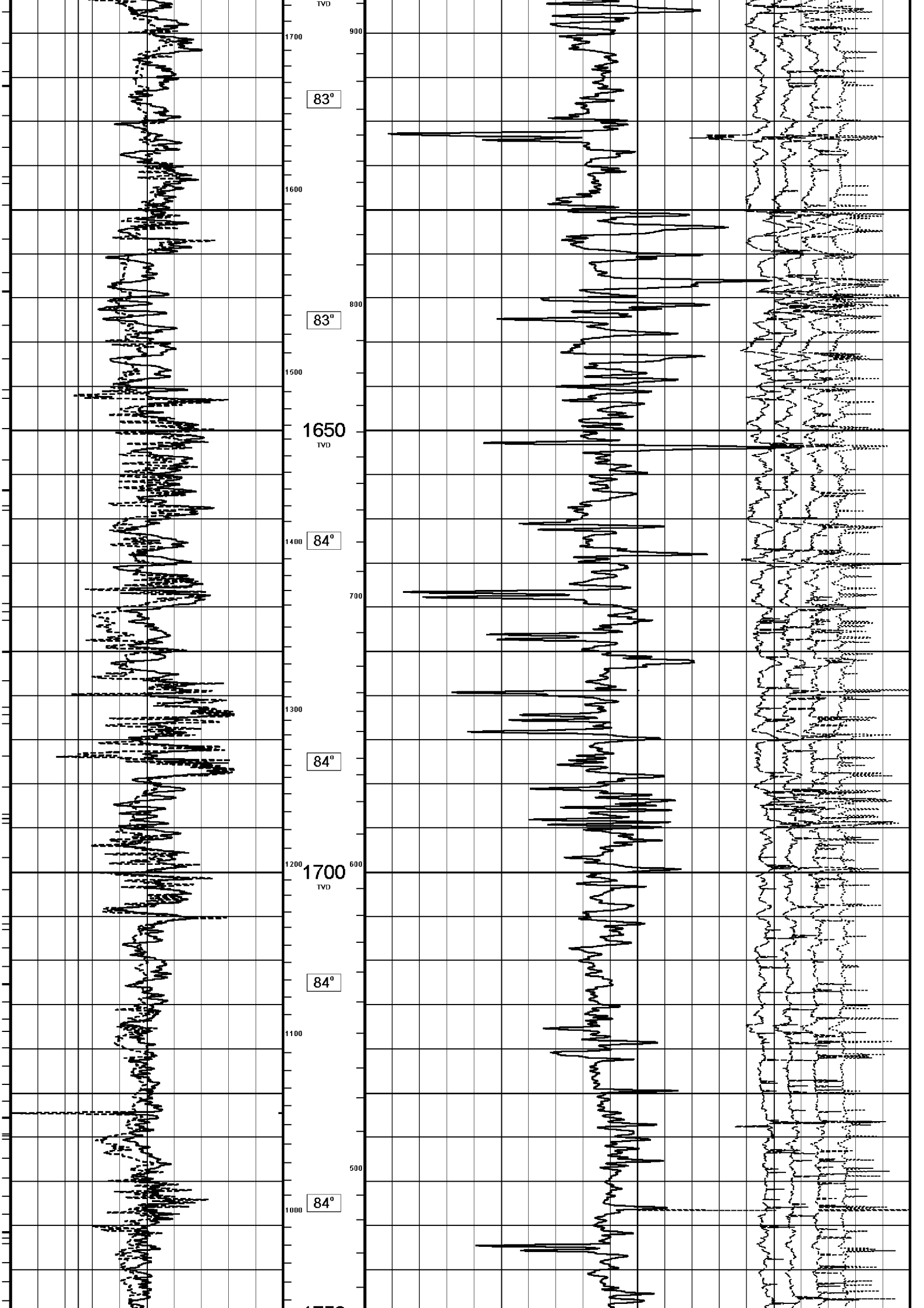


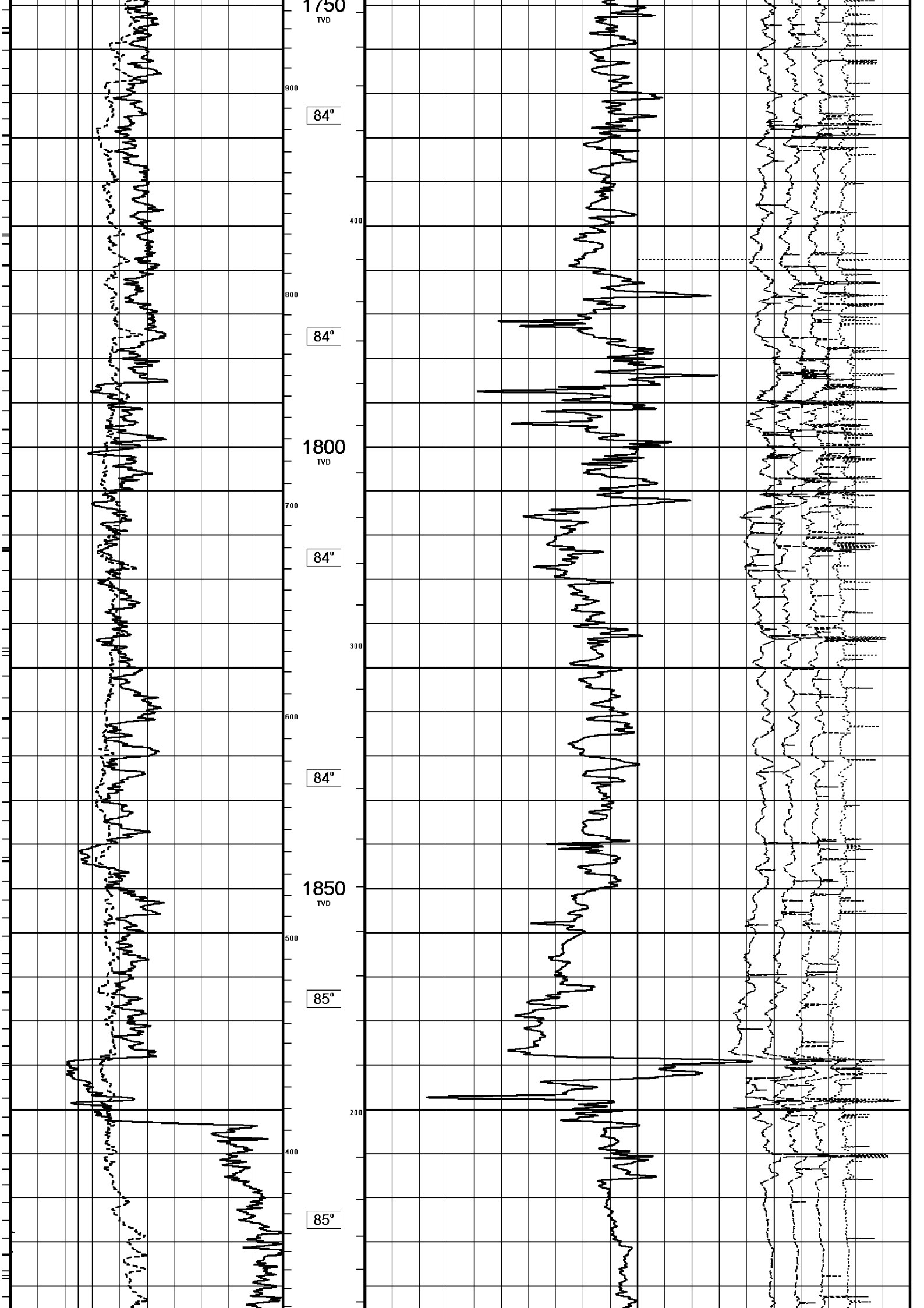


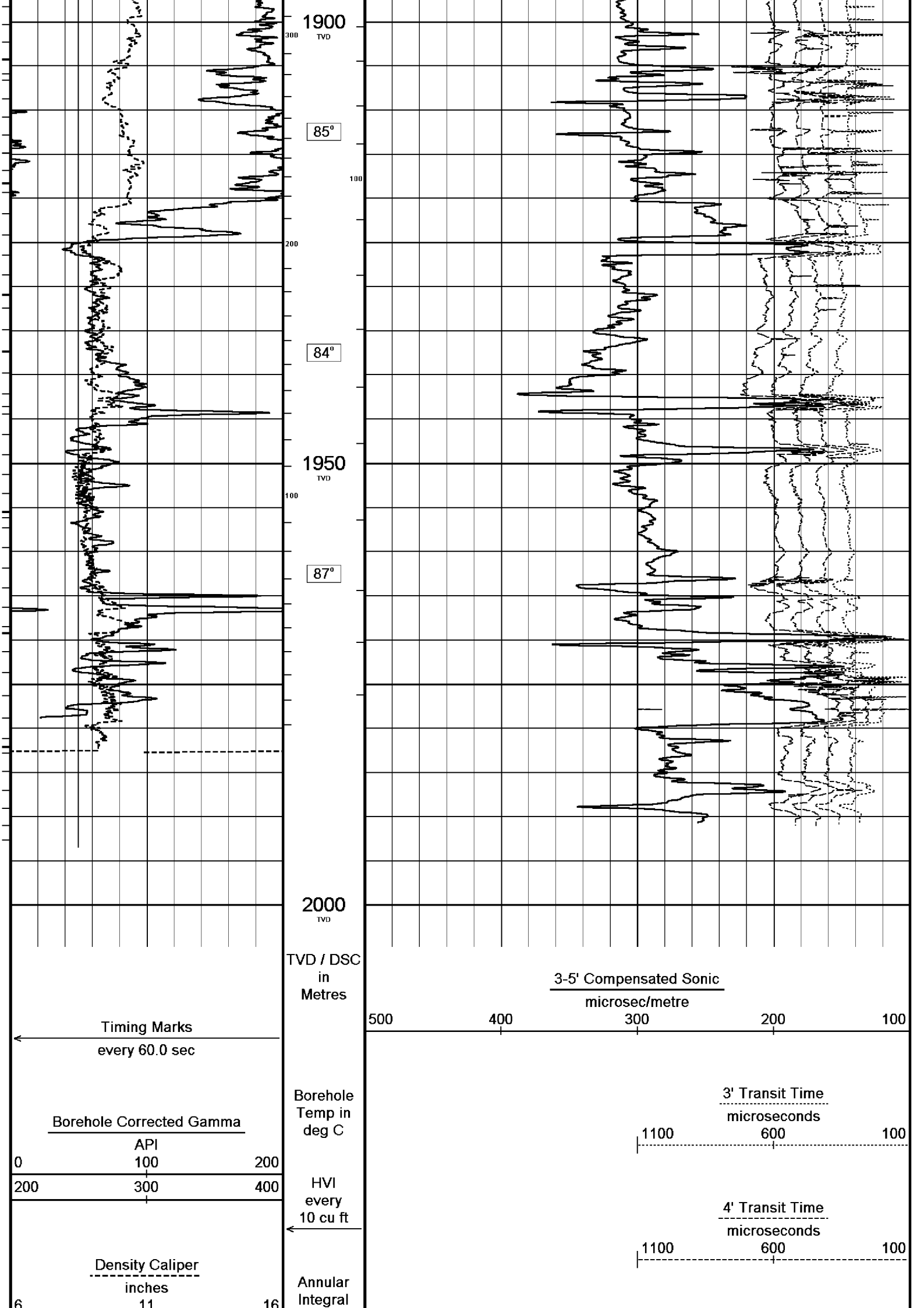














Depth Based Data - Maximum Sampling Increment 10.0cm
 Plotted on 15-FEB-2006 06:38
 Filename: C:\logs\BMA_A6A\FIELD DATA\BMA_A6A_MAIN_LOG2.dta
 Recorded on 14-FEB-2006 22:51
 System Configuration Dates: Logged 17-JUN-2004: Processed 17-JUN-2004: Plotted 17-JUN-2004:

MAIN LOG 1:500

BEFORE SURVEY CALIBRATION
 C:\logs\BMA_A6A\FIELD DATA\BMA_A6A_MAIN_LOG.dta

General Constants All 000

General Parameters		
Mud Resistivity	0.108	ohm-metres
Mud Resistivity Temperature	25.000	degrees C
Water Level	0.000	metres
Density/Neutron Processing	Wet Hole	
Hole/Annular Volume and Differential Caliper Parameters		
HVOL Caliper 1	Density Caliper	
HVOL Caliper 2	Density Caliper	
Annular Volume Diameter	7.000	inches
Caliper for Differential Caliper	None	
Rwa Parameters		
Porosity used	Limestone Sonic Porosity	
Resistivity used	Deep Induction	
RWA Constant A	0.610	
RWA Constant M	2.150	

High Resolution Temperature Calibration MCG 142 Field Calibration on 11-FEB-2006,19:18

	Measured	Calibrated(Deg C)
Lower	0.00	0.00
Upper	100.00	100.00

High Resolution Temperature Constants MCG 142

Pre-filter Length	11
-------------------	----

Gamma Calibration MCG 142 Field Calibration on 11-FEB-2006 19:18

	Measured	Calibrated (API)
Background	14	9
Calibrator (Gross)	1390	918
Calibrator (Net)	1376	909

Gamma Constants MCG 142

Gamma Calibrator Number	060	
Mud Density	1.20	gm/cc
Caliper Source for Processing	Density Caliper	
Tool Position	Centred	
Concentration of KCl	0.00	kppm

Caliper Calibration MPD 083 Base Calibration on 2-FEB-2006 16:03
Field Calibration on 11-FEB-2006 20:04

Reading No	Measured	Calibrator Size (in)
1	13840	4.01
2	22033	5.99
3	30543	7.98
4	38960	9.94
5	49464	12.01

Field Calibration

Measured Caliper (in)	Actual Caliper (in)
7.79	7.98

Sonic Constants MSS 066

Maximum Boundary Contrast	100.00	micro-sec/ft
Fluid Transit Time	189.00	micro-sec/ft
Limestone Transit Time	47.50	micro-sec/ft
Sandstone Transit Time	55.50	micro-sec/ft
Dolomite Transit Time	43.50	micro-sec/ft
Sonic used for Porosities	3-5' Compensated Sonic	
Correction for Sonde Skew	Applied	
Cycle Stretch Algorithm	Applied	
MN3FT	N/A	micro-sec
MX3FT	N/A	micro-sec

Fixed Gate Parameters

Start Time (micro-sec)	End Time (micro-sec)	Discriminator (mV)	N/A
N/A	N/A	N/A	N/A
N/A	N/A	N/A	N/A
N/A	N/A	N/A	N/A
N/A	N/A	N/A	N/A
N/A	N/A	N/A	N/A

Down Hole Fixed Gate Parameters

Gate Start	N/A	micro-sec
Gate Width	N/A	micro-sec
Initial Discriminator Level	0.0000	mVolts

Full Waveform Parameters

Use 3' Waveform to derive TR	No	
Use 4' Waveform to derive TR	No	
Use 5' Waveform to derive TR	No	
Use 6' Waveform to derive TR	No	
3' Waveform Discriminator Level	0.45	mV
4' Waveform Discriminator Level	0.45	mV
5' Waveform Discriminator Level	0.35	mV
6' Waveform Discriminator Level	0.35	mV
3' Waveform Filter	None	
4' Waveform Filter	None	
5' Waveform Filter	None	
6' Waveform Filter	None	
Semblance Level	0.50	
Semblance Window Width	120.00	micro-sec
Sonic 1 Despiker	100.00	micro-sec/ft
Sonic 2 Despiker	100.00	micro-sec/ft

DOWNHOLE EQUIPMENT

C:\logs\BMA_A6A\FIELD DATA\BMA_A6A_MAIN_LOG.dta

Compact Swivel Head Adaptor F
SHA 71 Length: 0.83 m Weight: 26.5 lb

Compact Knuckle Joint
SKJ 100 Length: 0.66 m Weight: 24.3 lb

Compact Battery Sub.
MBS 99 Length: 4.41 m Weight: 44.1 lb

Compact Inline Standoff B
MIS 73 Length: 0.65 m Weight: 15.4 lb

Compact Stiff Bridle Electrode Sub.



MBE 18 Length: 3.76 m Weight: 94.8 lb

Compact Inline Standoff B
MIS 138 Length: 0.65 m Weight: 15.4 lb

Compact Stiff Bridle Electrode Sub.
MBE 19 Length: 3.76 m Weight: 94.8 lb

Compact Inline Standoff B
MIS 136 Length: 0.65 m Weight: 15.4 lb

MBE21 - THIRD BRIDLE
MLK 111 Length: 3.76 m Weight: 30.9 lb

Compact Inline Standoff B
MIS 133 Length: 0.65 m Weight: 15.4 lb

Compact Gamma
MCG 142 Length: 2.65 m Weight: 63.9 lb

32.22 m GGCE - Borehole Corrected Gamma
31.33 m CGXT - MCG External Temperature

Compact Memory Sub A.C
MMS 38 Length: 0.95 m Weight: 30.9 lb

Compact Knuckle Joint
SKJ 45 Length: 0.66 m Weight: 24.3 lb

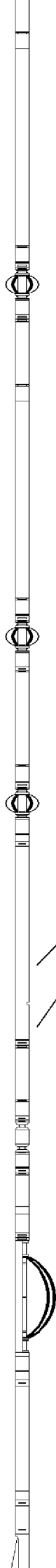
Compact Swivel Head Adaptor F
SHA 64 Length: 0.83 m Weight: 26.5 lb

Compact Inline Bowspring A
MIS 94 Length: 1.74 m Weight: 33.1 lb

Compact Neutron
MDN 85 Length: 1.53 m Weight: 50.7 lb

Compact Density/Caliper
MPD 83 Length: 2.92 m Weight: 90.4 lb

23.48 m AVOL - Annular Volume
23.48 m HVOL - Hole Volume
23.48 m CLDC - Density Caliper



Compact Inline Bowspring A
MIS 24 Length: 1.74 m Weight: 33.1 lb

Compact Swivel Head Adaptor
SHA 28 Length: 0.83 m Weight: 26.5 lb

Compact Knuckle Joint
SKJ 110 Length: 0.66 m Weight: 24.3 lb

Compact Inline Standoff B
MIS 72 Length: 0.65 m Weight: 15.4 lb

Compact Upper Guard Sub.
MUG 30 Length: 2.74 m Weight: 68.3 lb

Compact Inline Standoff B
MIS 141 Length: 0.65 m Weight: 15.4 lb

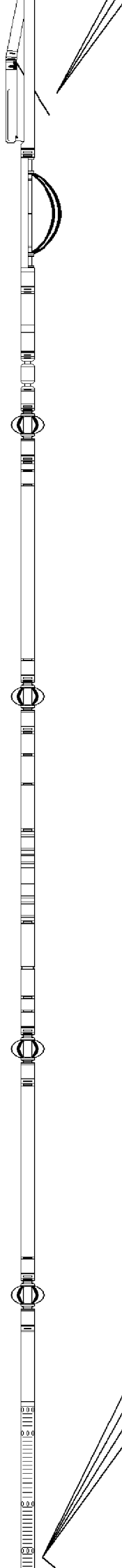
Compact Laterolog Electrode Sub.
MLE 31 Length: 3.76 m Weight: 92.6 lb

Compact Inline Standoff B
MIS 127 Length: 0.65 m Weight: 15.4 lb

Compact Lower Guard Sub.
MLG 7 Length: 2.44 m Weight: 55.1 lb

Compact Inline Standoff B
MIS 129 Length: 0.65 m Weight: 15.4 lb

Compact Sonic
MSS 66 Length: 3.82 m Weight: 72.8 lb



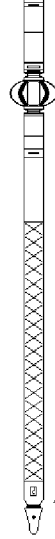
4.60 m TR21 - 3' Transit Time
4.60 m TR12 - 6' Transit Time
4.60 m TR22 - 5' Transit Time
4.60 m TR11 - 4' Transit Time

Compact Inline Standoff B
MIS 126 Length: 0.65 m Weight: 15.4 lb

Compact Induction
MAI 39 Length: 3.29 m Weight: 48.5 lb

Pressure Bung + Hole Finder
HFS 4 Length: 0.40 m Weight: 6.6 lb

Total Length: 54.01 m Weight: 1201.5 lb



4.60 m DT35 - 3-5' Compensated Sonic

Tool Zero (0.44m from bottom)

All measurements relative to tool zero.

COMPANY ESSO AUSTRALIA PTY LTD
WELL BREAM A6A
FIELD BREAM
PROVINCE/COUNTY BASS STRAIT
COUNTRY/STATE AUSTRALIA

Elevation Kelly Bushing		metres	First Reading	1990.08	metres
Elevation Drill Floor	32.82	metres	Depth Driller	1994.67	metres
Elevation Ground Level	-59.40	metres	Depth Logger	1993.29	metres



COMPENSATED SONIC
1:500 TVD