

Country : AUSTRALIA

Final TD : 3364.0m MDRT  
Final TVD : 1987.3m

Generated by ALS Package

[illegible]

Out : 3364.0m MDRT  
Run : 647.0m  
Hrs : 53.6  
Cond: 1.1-WT-A-X-  
IN-NO-TD  
MW: 10.23  
FV: 62  
PV: 26  
YP: 43  
Gel:10/18  
WI: 2.4  
pH: 9.10  
CI: 43k

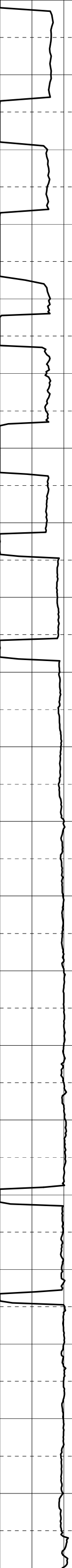
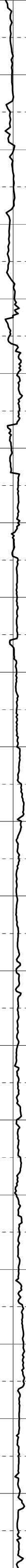
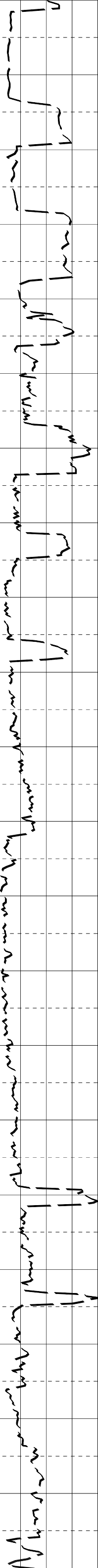
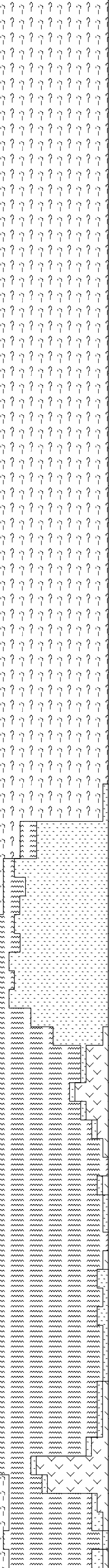
19-09-05

MW: 10.2  
FV: 64  
PV: 26  
YP: 43  
Gel:10/18  
WI: 2.4  
pH: 9.10  
CI: 43.5k

MW: 10.17  
FV: 68  
PV: 28  
YP: 44  
Gel:11/20  
WI: 2.2  
pH: 9.10  
CI: 45k  
20-09-05

MW: 10.18  
FV: 60  
PV: 28  
YP: 39  
Gel:10/20  
WI: 2.2

2770  
2790  
2810  
2830  
2850  
2870  
2890  
2910  
2930  
2950  
2970  
2990  
3010  
3030  
3050  
3070  
3090  
3110  
3130  
3150  
3170



WI: 2.2  
pH: 9.3  
CI: 45k  
21-09-05

MW: 10.18  
FV: 63  
PV: 28  
YP: 39  
Gel: 10/18  
WI: 2.0  
pH: 9.2  
CI: 44.5k

4-1/2" Production Liner set at  
3363.0m MDRT (1987.0m TVDRT)  
4-1/2" Liner Top at 2254.3m MDRT

Bream A22A ST Total Depth of  
3364.0m MDRT (1987.3m TVDRT)  
(-1954.5mTVDSS) at 16:45 hours  
on 21-09-2005.