



DRILLING LOG



FROM : (mt) 1450 TO : (mt) 2320 SCALE : 1/ 1000

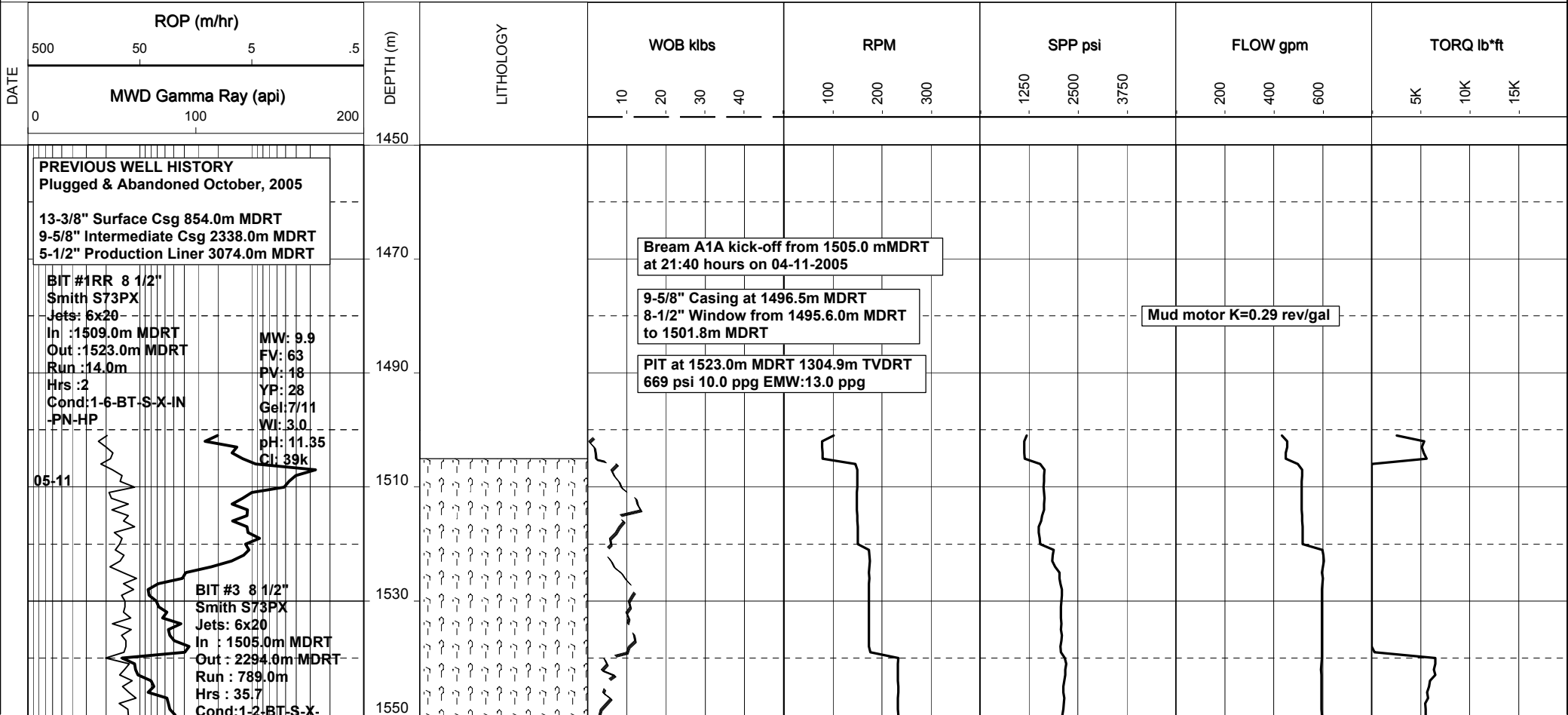
Well Name : BMA A1A
Company : ESSO AUSTRALIA

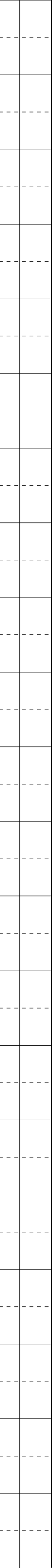
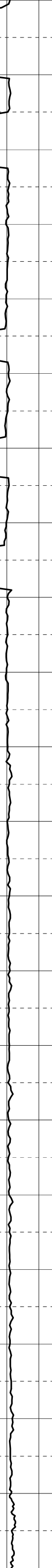
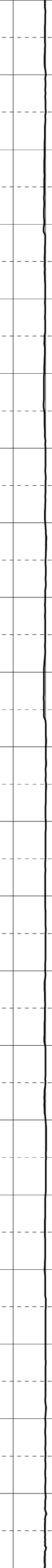
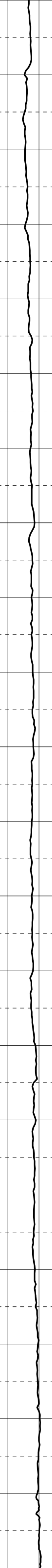
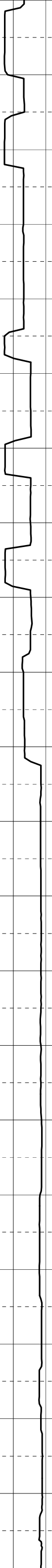
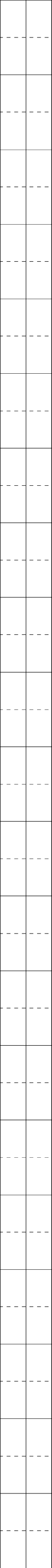
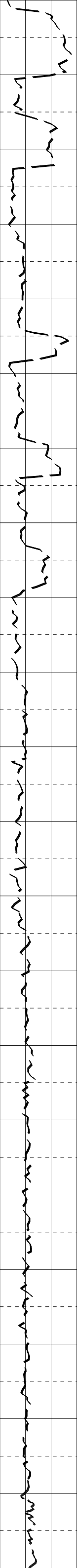
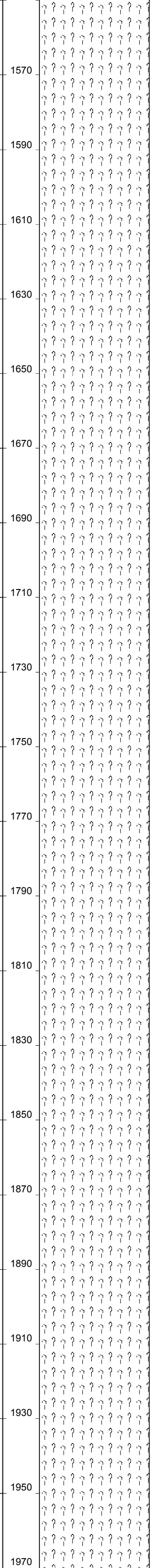
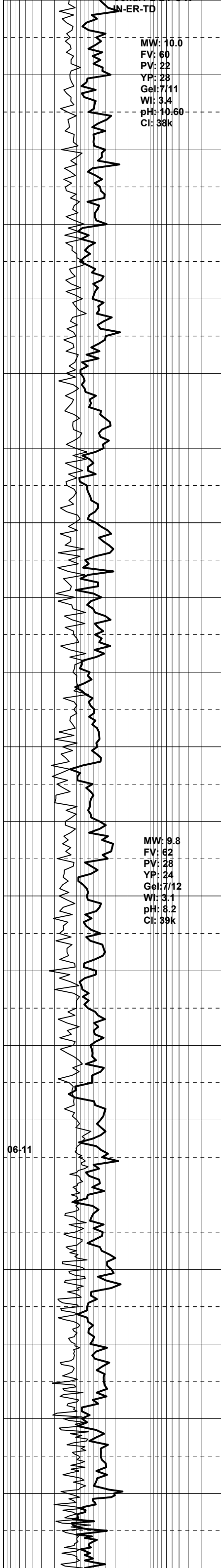
Country : AUSTRALIA

RT-MSL : 32.82m
RT-SEABED : 92.22m

Final TD : 2294.0m MDRT
Final TVD : 2033.9m TVDRT

Generated by ALS Package





MW: 9.9
FV: 63
PV: 34
YP: 30
Gel: 10/14
WI: 3.5
pH: 8.9
CI: 38k

MW: 10.0
FV: 71
PV: 30
YP: 51
Gel: 13/22
WI: 2.6
pH: 8.85
CI: 45k

07-11

7" Production Casing shoe
at 2287.0m MDRT

Bream A1A reached Total Depth of
2294.0m MDRT 2033.9m TVDRT
at 04:30 hours on 07-11-2005