

Company: Esso Australia Pty Ltd.

Well: A-15
Field: Bream A
Rig: Prod4 / Crane
Country: Australia

RST-C Sigma Survey
2 1/8" Powerjet MWPT Perforation Record
4.5" Posiset Plug Setting Record

Rig: Prod4 / Crane
Field: Bream A
Location: Gippsland
Well: A-15
Company: Esso Australia Pty Ltd.

LOCATION			
Gippsland	Elev.:	K.B.	33.50 m
Basin		G.L.	-59.00 m
Bass Strait		D.F.	33.50 m
Permanent Datum:	M.S.L.	Elev.:	0.00 m
Log Measured From:	D.F.	33.50 m	above Perm. Datum
Drilling Measured From:	D.F.		

State: Victoria	Max. Well Deviation 32 deg	Longitude 147 46'15"E	Latitude 038 30'04"S
-----------------	-------------------------------	--------------------------	-------------------------

Logging Date	27-Feb-2009		
Run Number	1 through 6		
Depth Driller	2099 m		
Schlumberger Depth	2099 m		
Bottom Log Interval	2099 m		
Top Log Interval	1700 m		
Casing Fluid Type	Production Fluids		
Salinity			
Density			
Fluid Level	1046 m		
BIT/CASING/TUBING STRING			
Bit Size	8.000 in		
From	1936 m		
To	2215 m		
Casing/Tubing Size	4.500 in		
Weight	38.6 lbm/ft		
Grade	13CR		
From	1783 m		
To	2147 m		
Maximum Recorded Temperatures	188 degF		
Logger On Bottom	27-Feb-2009	14.10	
Unit Number	889	Prod4 / Ausl	
Recorded By	S Gilbert. B Donahoe		
Witnessed By	B White		

Run 1

PVT DATA			
Oil Density			
Water Salinity			
Gas Gravity			
Bo			
Bw			
1/Bg			
Bubble Point Pressure			
Bubble Point Temperature			
Solution GOR			
Maximum Deviation	32 deg		
CEMENTING DATA			
Primary/Squeeze	Primary		
Casing String No			
Lead Cement Type			
Volume			
Density			
Water Loss			
Additives			
Tail Cement Type			
Volume			
Density			
Water Loss			
Additives			
Expected Cement Top			
Logging Date			
Run Number			
Depth Driller			
Schlumberger Depth			
Bottom Log Interval			
Top Log Interval			
Casing Fluid Type			
Salinity			
Density			
Fluid Level			
BIT/CASING/TUBING STRING			
Bit Size			
From			
To			
Casing/Tubing Size			
Weight			
Grade			
From			
To			
Maximum Recorded Temperatures			
Logger On Bottom			
Unit Number			
Recorded By			
Witnessed By			

DEPTH SUMMARY LISTING

Date Created: 23-FEB-2009 16:46:06

Depth System Equipment

Depth Measuring Device		Tension Device		Logging Cable	
Type:	IDW-EB	Type:	PSDS/OSDS	Type:	2-32ZT
Serial Number:	6373	Serial Number:	325357	Serial Number:	207308
Calibration Date:	2-Dec-2008	Calibration Date:	23-Feb-2009	Length:	6250 M
Calibrator Serial Number:	30	Calibrator Serial Number:	1174	Conveyance Method: Wireline Rig Type: LAND	
Calibration Cable Type:	2-23ZT	Number of Calibration Points:	9		
Wheel Correction 1:	-1	Calibration RMS:	16		
Wheel Correction 2:	-2	Calibration Peak Error:	27		

Depth Control Parameters

Log Sequence:	Subsequent Log In the Well
Reference Log Name:	Solar Composite Log
Reference Log Run Number:	
Reference Log Date:	.

Depth Control Remarks

1. IDW used as primary depth control.
2. Z-chart used as secondary backup
3. Log Correlated on depth over Zone of interest
4.
5.
6.

DISCLAIMER

THE USE OF AND RELIANCE UPON THIS RECORDED-DATA BY THE HEREIN NAMED COMPANY (AND ANY OF ITS AFFILIATES, PARTNERS, REPRESENTATIVES, AGENTS, CONSULTANTS AND EMPLOYEES) IS SUBJECT TO THE TERMS AND CONDITIONS AGREED UPON BETWEEN SCHLUMBERGER AND THE COMPANY, INCLUDING: (a) RESTRICTIONS ON USE OF THE RECORDED-DATA; (b) DISCLAIMERS AND WAIVERS OF WARRANTIES AND REPRESENTATIONS REGARDING COMPANY'S USE OF AND RELIANCE UPON THE RECORDED-DATA; AND (c) CUSTOMER'S FULL AND SOLE RESPONSIBILITY FOR ANY INFERENCE DRAWN OR DECISION MADE IN CONNECTION WITH THE USE OF THIS RECORDED-DATA.

OTHER SERVICES1
OS1: None
OS2:

REMARKS: RUN NUMBER 1
Log correlated to ExxonMobil composite supplied with logging program.
Maximum well deviation = 32deg @ 1968m MDKB.
Objectives: RST-C Sigma survey from HUD to 2050m MDKB. Making two passes at 900 ft/hr.
Following this survey the well will be re-perforated and watered out zone plugged off with a 4.5" MPBT plug.
The Sum of the two Casing weights 26lb/ft and 12.6lb/ft were used for the RST casing Weight in the Parameters
RST SURVEY -- SBHP = 2617psia. SBHT = 182 degf. HUD= 2099 m MDKB

New Penetration Logs = 2083 m to 2095 m MDKB					
Top Shot @ 2083 m MDKB					
CCL to Top Shot = 3.5m					
CCL Stop Depth = 2079.5 m MDKB					
4.5" Posiset Plug top of Seal Set @ 2095m MDKB					
CCL to Top of Seal = 6.8 m					
CCL stop Depth = 2088.2m MDKB					
1m of Cement dumped in 1 Run.					
Crew : C Shiells , N Simmons					
RUN 1					
SERVICE ORDER #:		AYCW-00005			
PROGRAM VERSION:		16C0-147			
FLUID LEVEL:		1046 m			
LOGGED INTERVAL	START	STOP	LOGGED INTERVAL	START	STOP
EQUIPMENT DESCRIPTION					
RUN 1			RUN 2		
SURFACE EQUIPMENT			SURFACE EQUIPMENT		
WITM-A PSC_16MHZ			MWPM-AA		
DOWNHOLE EQUIPMENT			DOWNHOLE EQUIPMENT		
SWBS-B 789		13.30	SWBS-B 789		12.3
SWBS-B 788		12.61	SWBS-B 788		11.7
SWBS-B 787		11.93	SWBS-B 787		11.0
SWBS-B 786		11.24	SWBS-B 786		10.3
SWBS-B 785		10.55	SWBS-B 785		9.6
MH-SWHS-A 759		9.87	SWHS-A 759		8.9
PSPT-B		9.54	AH-124 7002		8.6
PSC-A 827			MWGT-AA 19		8.5
PSPT-B 827			MWPG-AA 19		
PSTC 806			MWGH-AA 19	MWPG GR	2.41
PBMS-B 827					
CQG_F_Mano 827	GR	8.41			
RTD Thermometer 827			MWPT-CA 11		7.5
GR 827			MWPH-AA 94		
CCL 827			MWPS-AA 11		
PBMS 827	Well_Temp	7.48			
	CQG Manom	7.37			
	CCL	7.25			
	PBMS PSTC	7.02			
RST-C BLK-1		7.02		CCL	
RSCH-A 471				SMWP Pres	
RSC-C 488				SMWP Temp	
RSS-A 473				Tension	
RSSL-A 490					TOOL ZERO

RSC-A Far
RSC-A PNG
RSC-A Nea
RSX-A PNG

4.24

4.09

Tension HV 0.00
TOOL ZERO

MAXIMUM STRING DIAMETER 1.72 IN
MEASUREMENTS RELATIVE TO TOOL ZERO
ALL LENGTHS IN METERS

AH-Flex Joint 42

AH-Flex Joint 42

SAH-G 1035

SAH-G 1035

MPD-MB 336

MPD-MB 336

AH-ESIC 4007395

AH-ESIC 4007395

AH-Firing Head 1

MWP_GUN

GUN-2 1/8" Phased Powerjet 1

4.73

4.27

3.94

3.40

2.97

2.74

TOOL BOTTOM

MAXIMUM STRING DIAMETER 2.13 IN
MEASUREMENTS RELATIVE TO TOOL ZERO
ALL LENGTHS IN METERS

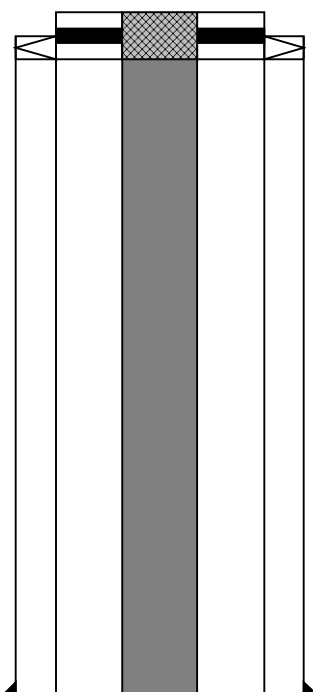
Production String

(in) (m)
OD ID MD

Tubing Hanger
Tubing

9.675 3.500 11.8
3.500 11.8

Well Schematic



(m) (in)
MD OD ID

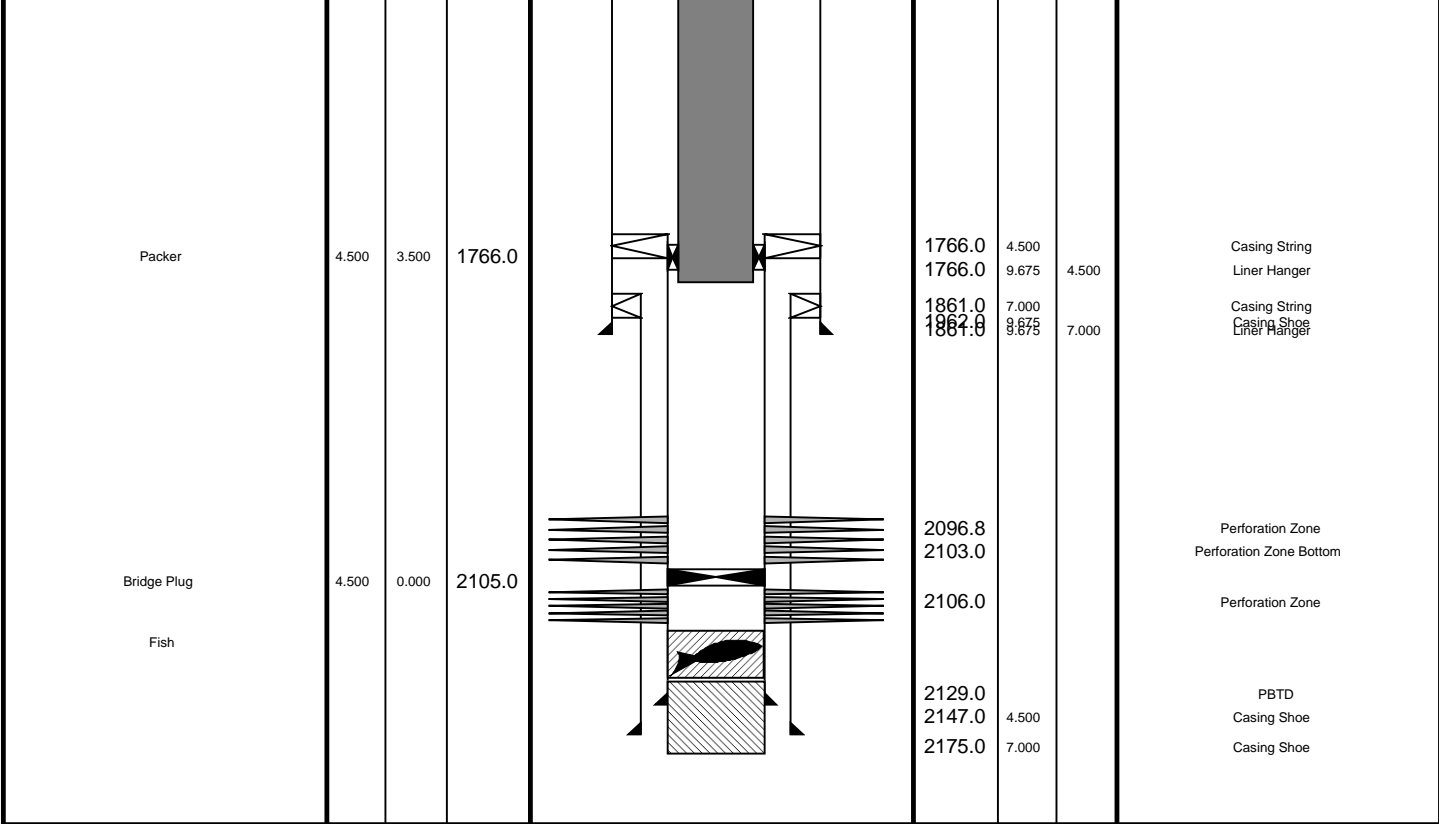
13.0 13.375 9.675
12.5 13.375

Casing String

Casing String
Liner Hanger

958.0 13.375

Casing Shoe



Job Events Summary

MAXIS Field Log

Schlumberger Job Event Summary

	Time	Elapsed Time	Depth (M)	File
Log Pass (up)	27-Feb-2009 13:58	000:07	2102.8 - 2033.9	RST_PSP_006LUP
Log Pass (up)	27-Feb-2009 14:16	000:14	2101.1 - 2033.8	RST_PSP_009LUP
Log Pass (up)	27-Feb-2009 14:34	000:14	2100.4 - 2034.5	RST_PSP_011LUP
Log Pass (up)	28-Feb-2009 11:34	000:07	2083.5 - 2037.4	PERFO_024LUP
Log Pass (up)	28-Feb-2009 11:44	001:12	2087.6 - 2038.5	PERFO_025LUP
Station Log	28-Feb-2009 11:48	000:60	2079.5	PERFO_026LTP
Log Pass (up)	28-Feb-2009 14:25	000:16	2097.8 - 1742.1	PERFO_033LUP
Log Pass (up)	28-Feb-2009 16:34	000:06	2068.4 - 2022.3	MPBT_044LUP
Log Pass (up)	28-Feb-2009 16:51	000:14	12192.0 - 11978.5	MPBT_045LUP
Log Pass (up)	28-Feb-2009 17:06	000:02	2088.2 - 2021.0	MPBT_046LUP
Log Pass (up)	1-Mar-2009 7:54	000:11	2089.7 - 2041.6	PERFO_056LUP
Log Pass (up)	1-Mar-2009 9:32	000:12	2090.2 - 2038.3	PERFO_059LUP



Cement Dump Pass

MAXIS Field Log

Output DLIS Files

DEFAULT PERFO_059LUP FN:58 PRODUCER 01-Mar-2009 09:32 2090.2 M 2038.3 M

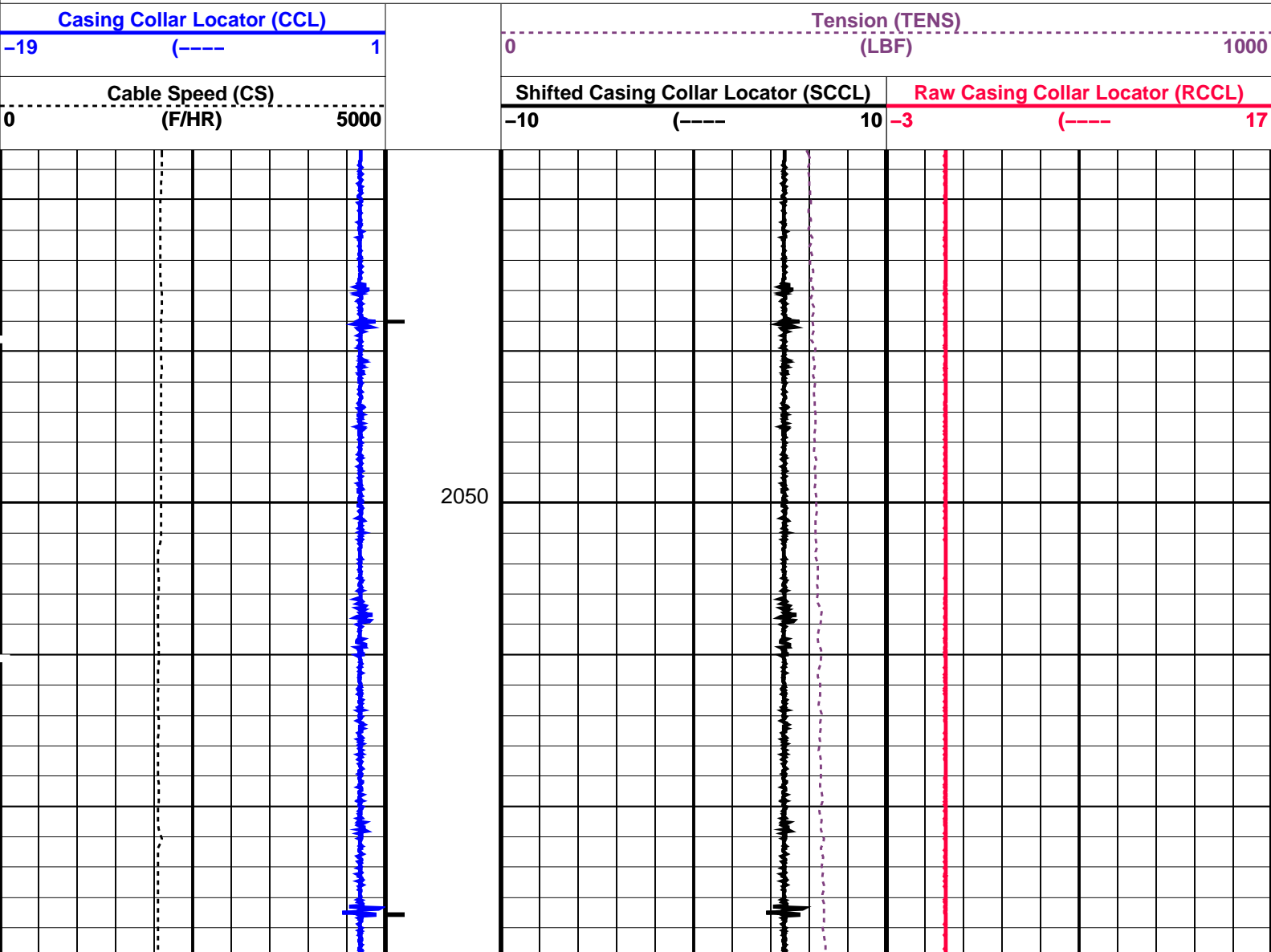
OP System Version: 16C0-147
MCM

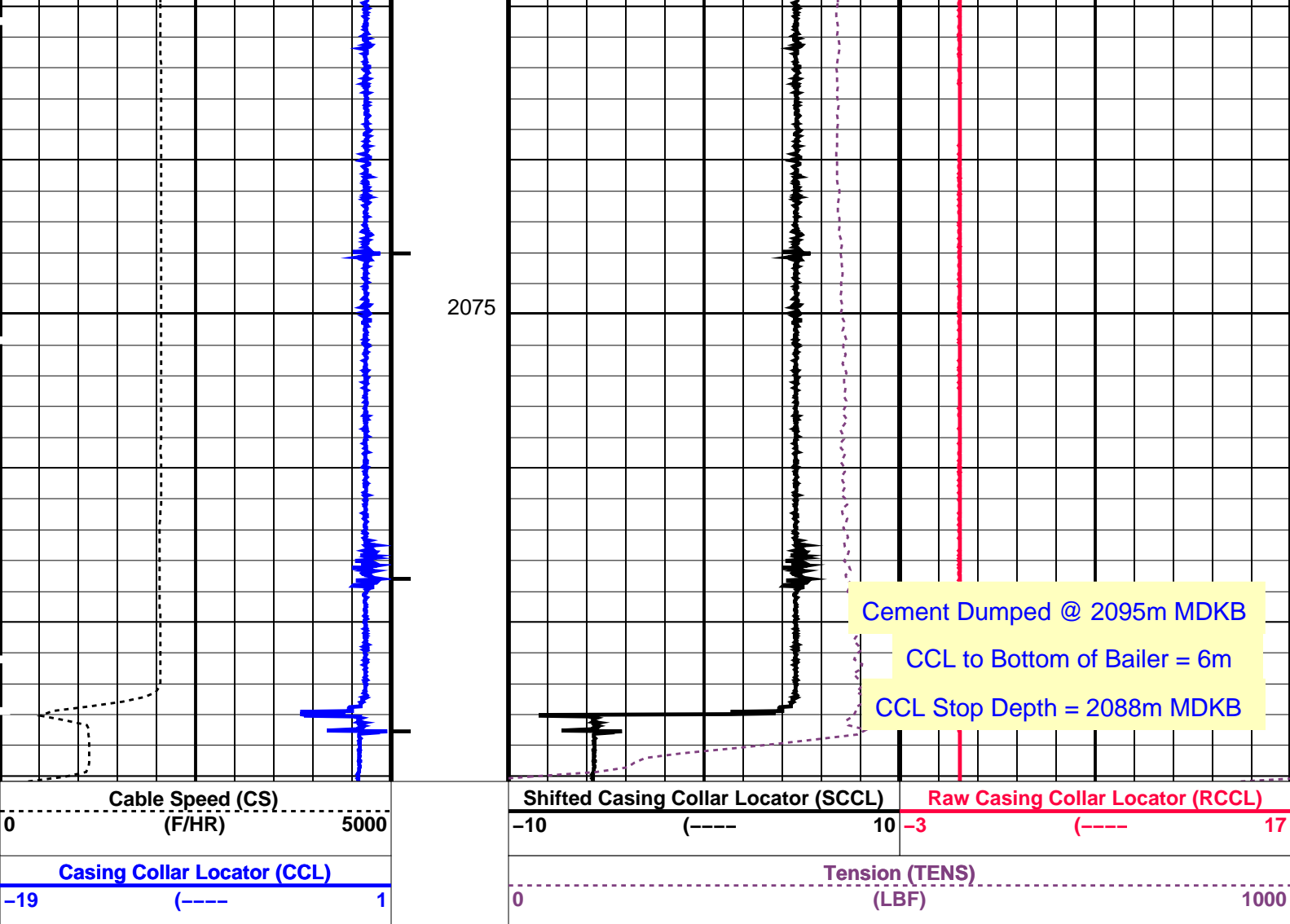
SHM_GUN 16C0-147 CCL-L 16C0-147

PIP SUMMARY

└─ Casing Collars

Time Mark Every 60 S





PIP SUMMARY

Time Mark Every 60 S

Parameters

DLIS Name	Description	Value
CCL-L: Casing Collar Locator		
CCLD	CCL reset delay	12 IN
CCLT	CCL Detection Level	0.3 V

Format: PERFO_1 Vertical Scale: 1:200 Graphics File Created: 01-Mar-2009 09:32

OP System Version: 16C0-147
MCM

SHM_GUN 16C0-147 CCL-L 16C0-147

Output DLIS Files

DEFAULT PERFO_059LUP FN:58 PRODUCER 01-Mar-2009 09:32

Schlumberger

Water Dump Pass

Output DLIS Files

DEFAULT PERFO_056LUP FN:55 PRODUCER 01-Mar-2009 07:54 2089.7 M 2041.6 M

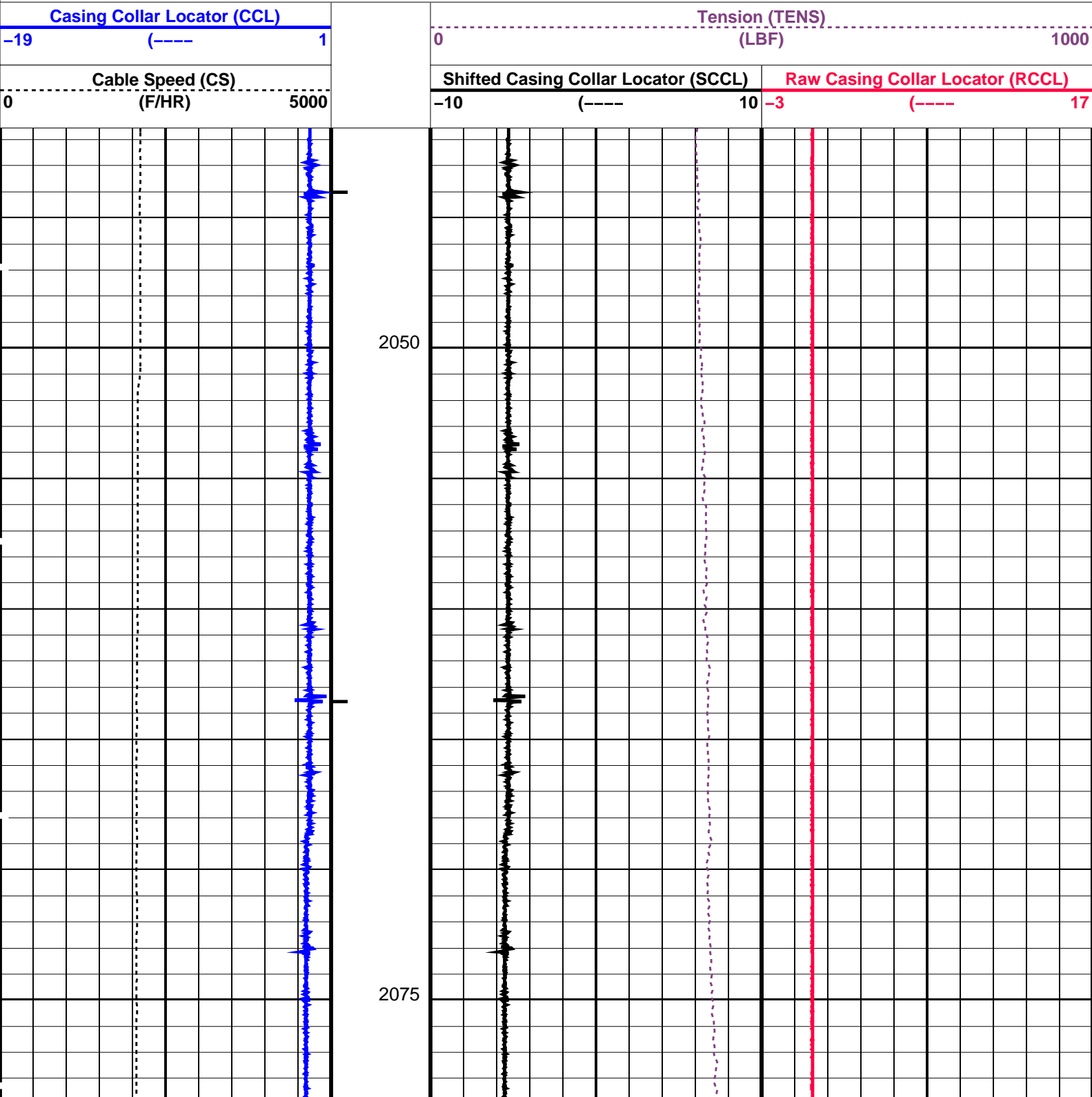
OP System Version: 16C0-147
MCM

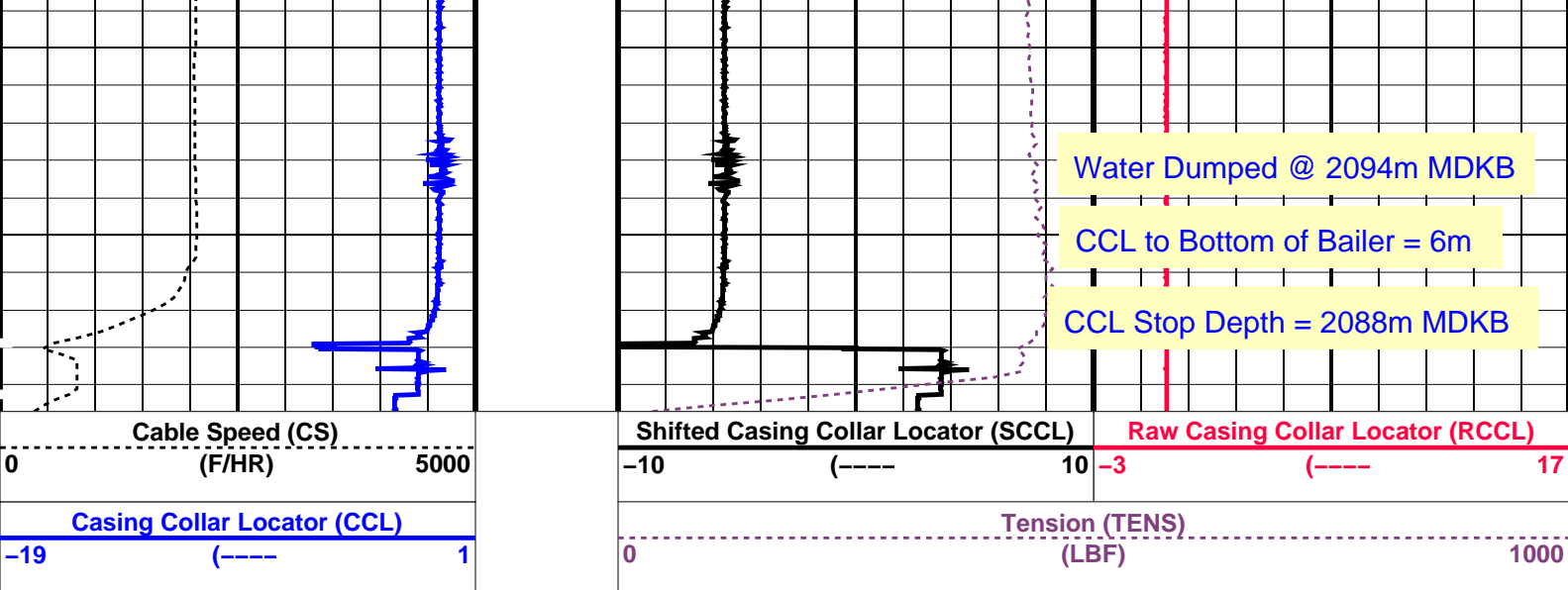
SHM_GUN 16C0-147 CCL-L 16C0-147

PIP SUMMARY

└─ Casing Collars

Time Mark Every 60 S





PIP SUMMARY

Time Mark Every 60 S


Casing Collars

Parameters		
DLIS Name	Description	Value
CCLD	CCL-L: Casing Collar Locator	12 IN
CCLT	CCL reset delay	0.3 V
	CCL Detection Level	

Format: PERFO_1 Vertical Scale: 1:200 Graphics File Created: 01-Mar-2009 07:54

OP System Version: 16C0-147			
MCM			
SHM_GUN	16C0-147	CCL-L	16C0-147

Output DLIS Files			
DEFAULT	PERFO_056LUP	FN:55 PRODUCER	01-Mar-2009 07:54



Log Away From Plug Set

MAXIS Field Log

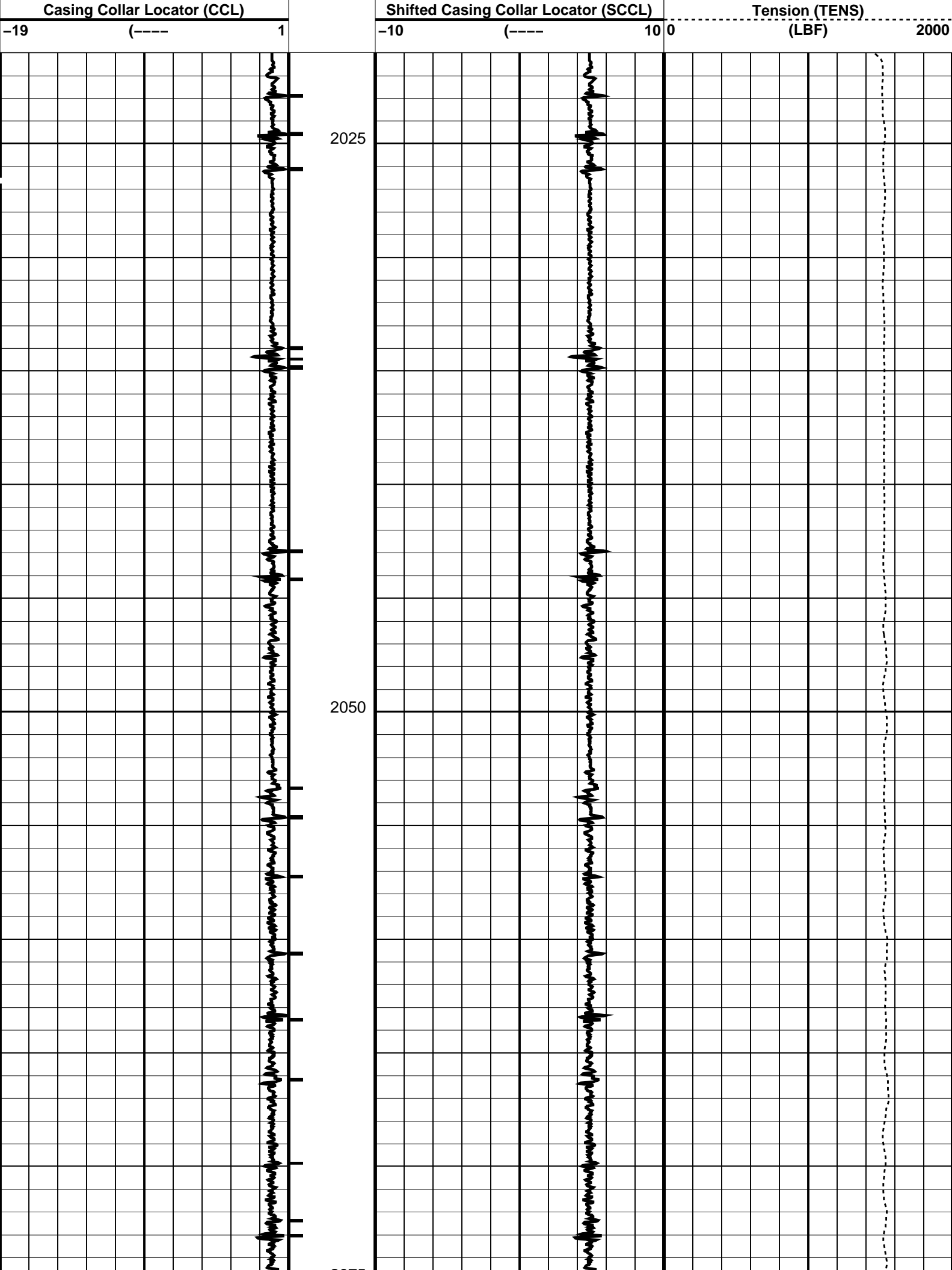
Output DLIS Files					
DEFAULT	MPBT_046LUP	FN:45 PRODUCER	28-Feb-2009 17:06	2088.2 M	2021.0 M

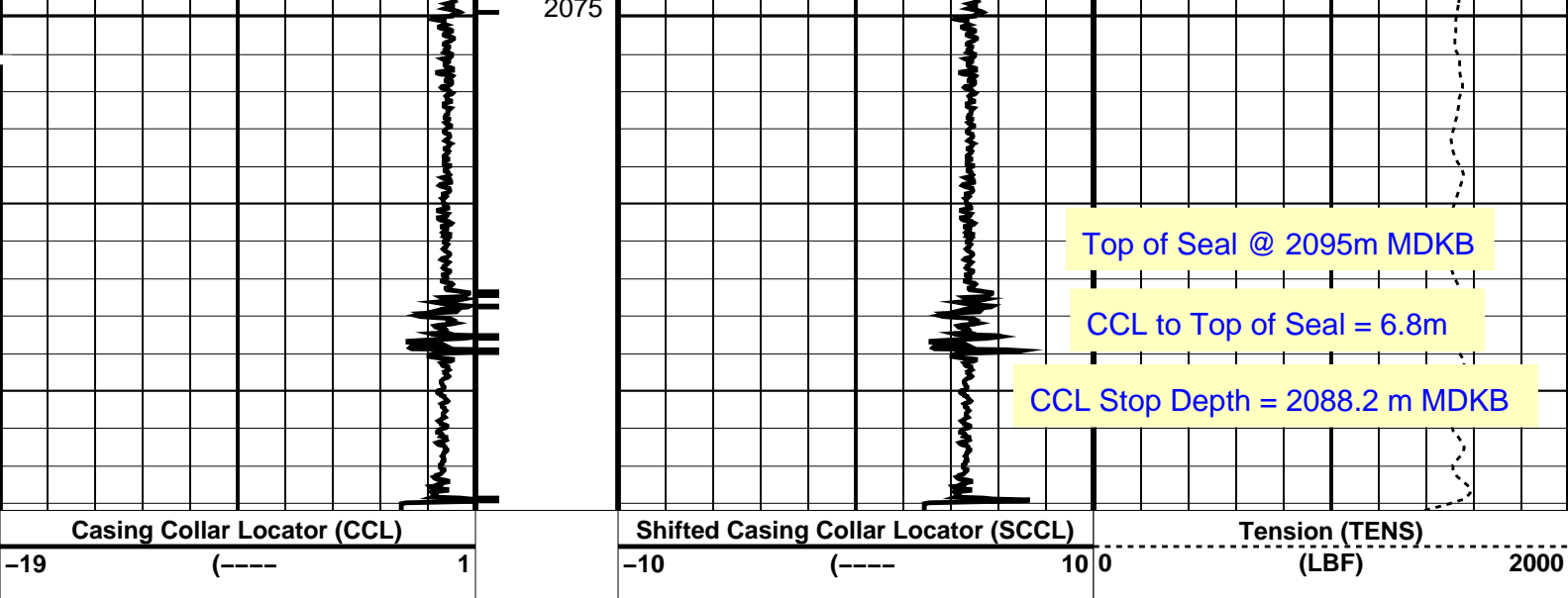
OP System Version: 16C0-147			
MCM			
MPEX-AA	16C0-147	MPSU-BA	16C0-147
CCL-PCCL	16C0-147		

PIP SUMMARY

Time Mark Every 60 S

Casing Collars





PIP SUMMARY

← Casing Collars

Time Mark Every 60 S

Parameters

DLIS Name	Description	Value
CCL-PCCL: Casing Collar Locator		
CCLD	CCL reset delay	12 IN
CCLT	CCL Detection Level	0.3 V

Format: PERFO Vertical Scale: 1:200 Graphics File Created: 28-Feb-2009 17:06

OP System Version: 16C0-147

MCM

MPEX-AA 16C0-147 MPSU-BA 16C0-147
CCL-PCCL 16C0-147

Output DLIS Files

DEFAULT MPBT_046LUP FN:45 PRODUCER 28-Feb-2009 17:06

Schlumberger

4.5" Posiset Plug .
Top of Seal @ 2095m MDKB

MAXIS Field Log

Output DLIS Files

DEFAULT MPBT_045LUP FN:44 PRODUCER 28-Feb-2009 16:51

OP System Version: 16C0-147

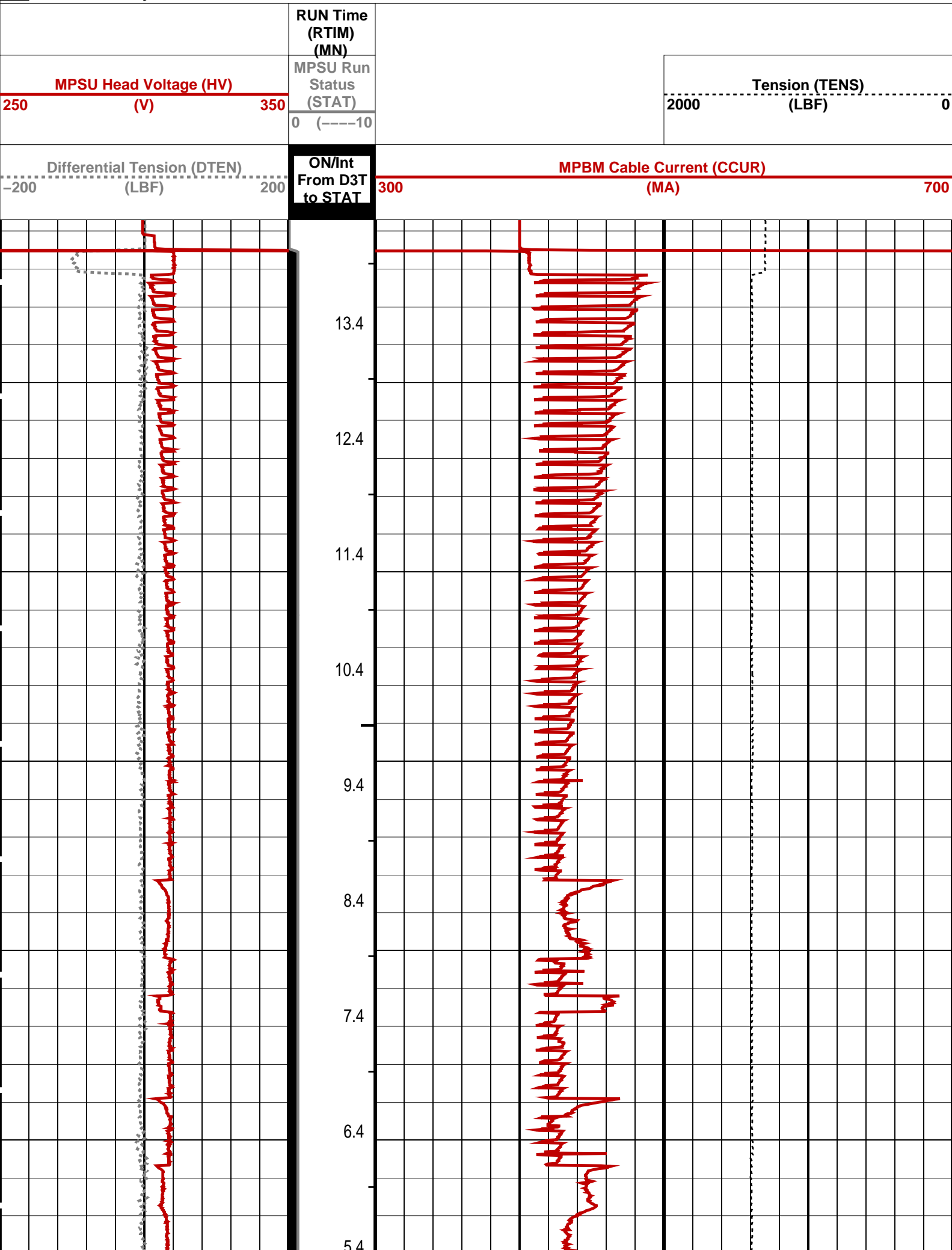
MCM

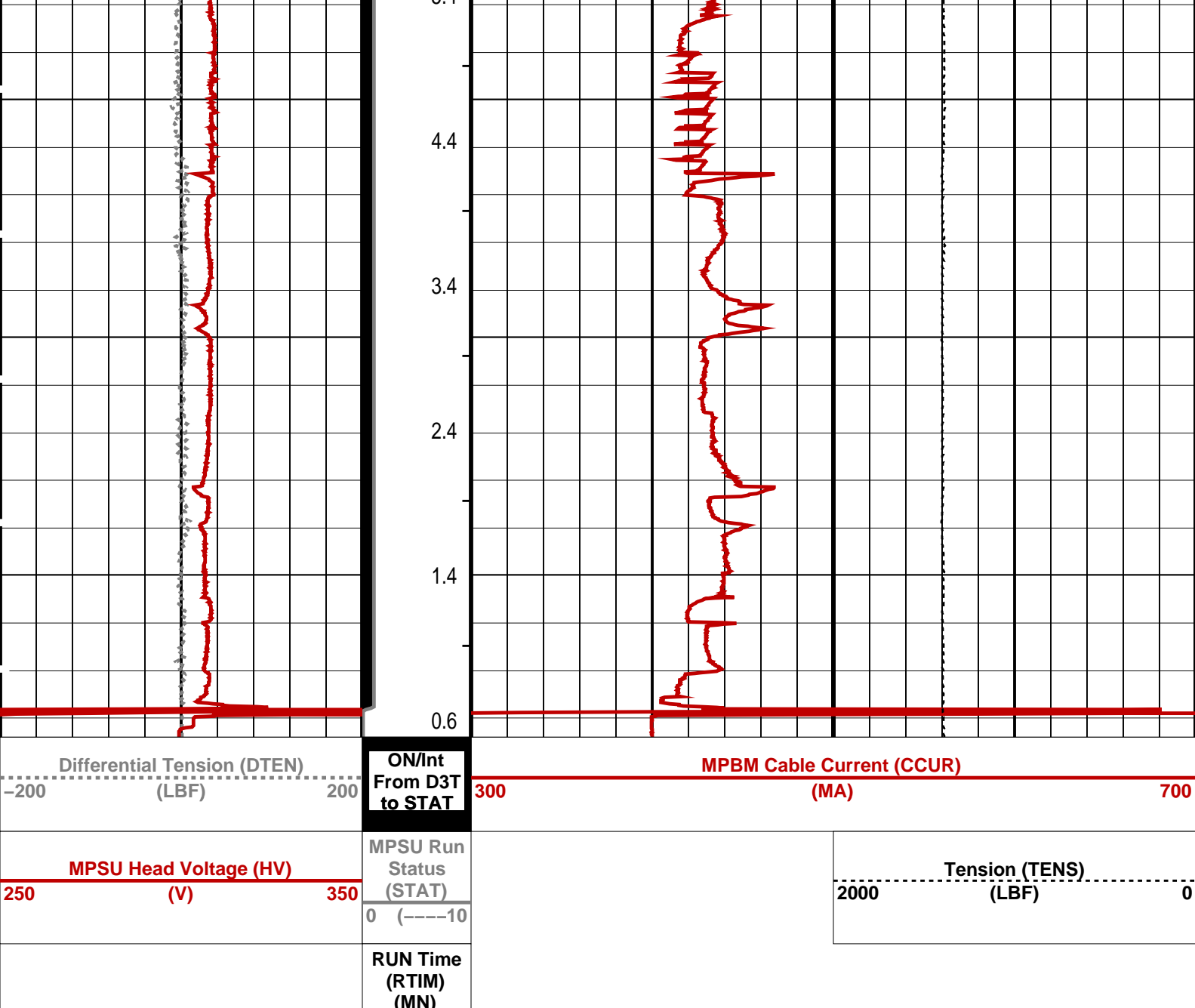
MPEX-AA 16C0-147 MPSU-BA 16C0-147
CCL-PCCL 16C0-147

PIP SUMMARY

→ MPSU Run Time Every 1 MN
→ MPSU Run Time Every 10 MN

Time Mark Every 60 S





PIP SUMMARY

- ↓ MPSU Run Time Every 1 MN
- MPSU Run Time Every 10 MN

Time Mark Every 60 S

Parameters

DLIS Name	Description	Value
IPUMP	MPSU-BA: MECHANICAL PLUGBACK SETTING UNIT Intensifier Pump	TRUE

Format: MPBT Vertical Scale: 1:600 Graphics File Created: 28-Feb-2009 16:51

OP System Version: 16C0-147 MCM

MPEX-AA	16C0-147	MPSU-BA	16C0-147
CCL-PCCL	16C0-147		

Output DLIS Files

DEFAULT	MPBT_045LUP	FN:44	PRODUCER	28-Feb-2009 16:51
---------	-------------	-------	----------	-------------------

Output DLIS Files

DEFAULT MPBT_044LUP FN:43 PRODUCER 28-Feb-2009 16:34 2068.4 M 2022.3 M

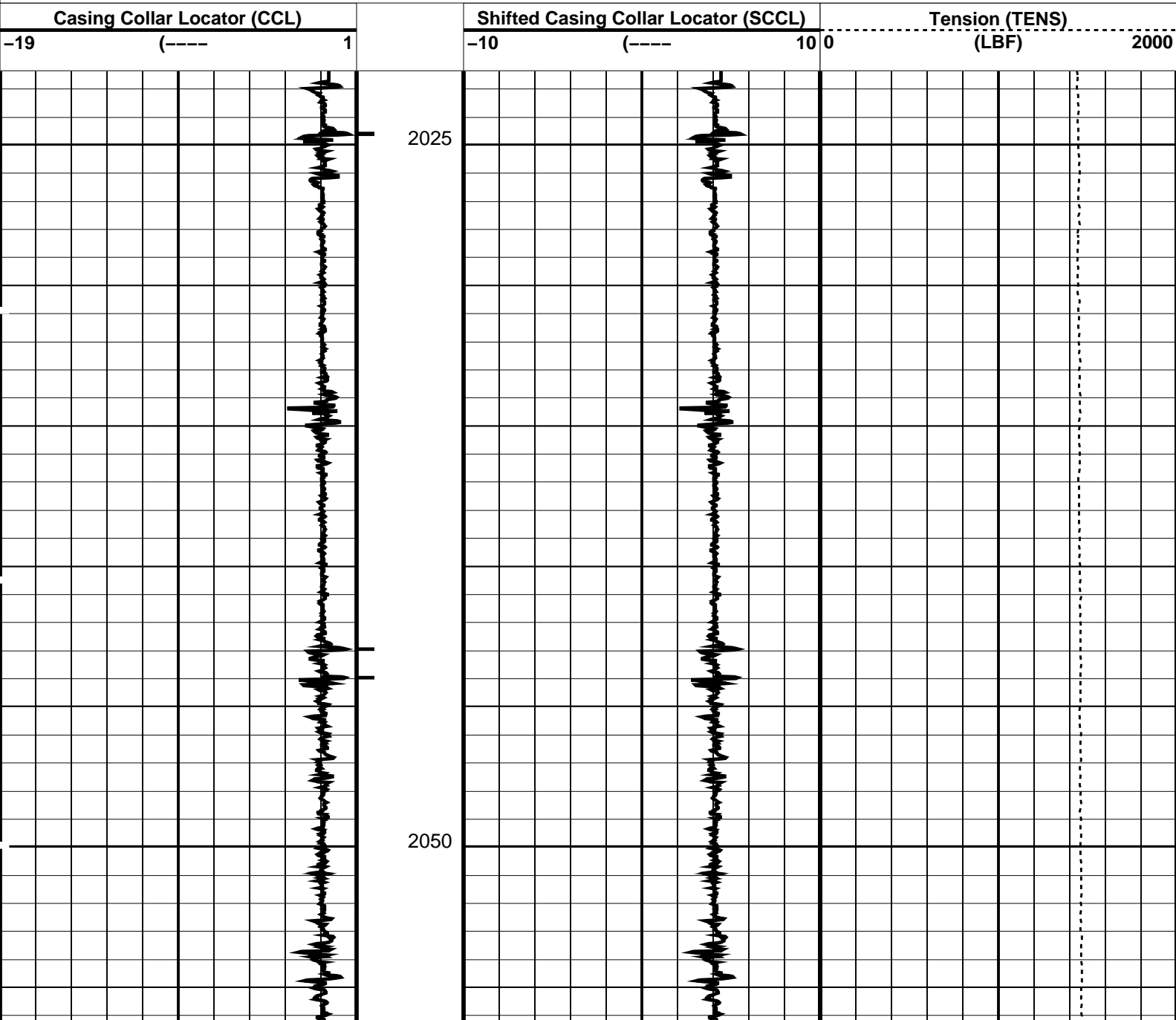
OP System Version: 16C0-147
MCM

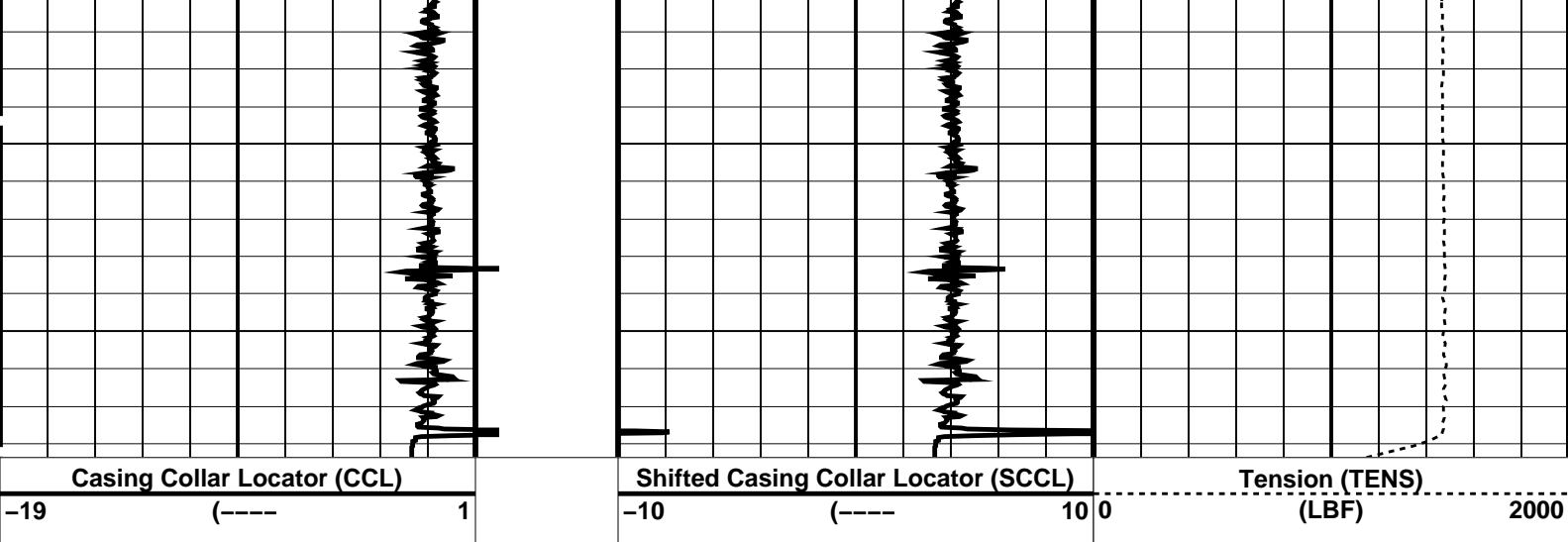
MPEX-AA 16C0-147 MPSU-BA 16C0-147
CCL-PCCL 16C0-147

PIP SUMMARY

└─ Casing Collars

☒ Time Mark Every 60 S





PIP SUMMARY

← Casing Collars

Time Mark Every 60 S

Parameters

DLIS Name	Description	Value
CCL-PCCL: Casing Collar Locator		
CCLD	CCL reset delay	12 IN
CCLT	CCL Detection Level	0.3 V

Format: PERFO Vertical Scale: 1:200

Graphics File Created: 28-Feb-2009 16:34

OP System Version: 16C0-147

MCM

MPEX-AA	16C0-147	MPSU-BA	16C0-147
CCL-PCCL	16C0-147		

Output DLIS Files

DEFAULT	MPBT_044LUP	FN:43	PRODUCER	28-Feb-2009 16:34
---------	-------------	-------	----------	-------------------

Schlumberger

Dummy Plug Pass

MAXIS Field Log

Company: Esso Australia Pty Ltd.

Well: A-15

Input DLIS Files

DEFAULT	PERFO_033LUP	FN:32	PRODUCER	28-Feb-2009 14:25	2097.8 M	1742.1 M
---------	--------------	-------	----------	-------------------	----------	----------

Output DLIS Files

DEFAULT	PERFO_034PUP	FN:33	PRODUCER	28-Feb-2009 14:43	2097.8 M	1739.6 M
---------	--------------	-------	----------	-------------------	----------	----------

OP System Version: 16C0-147

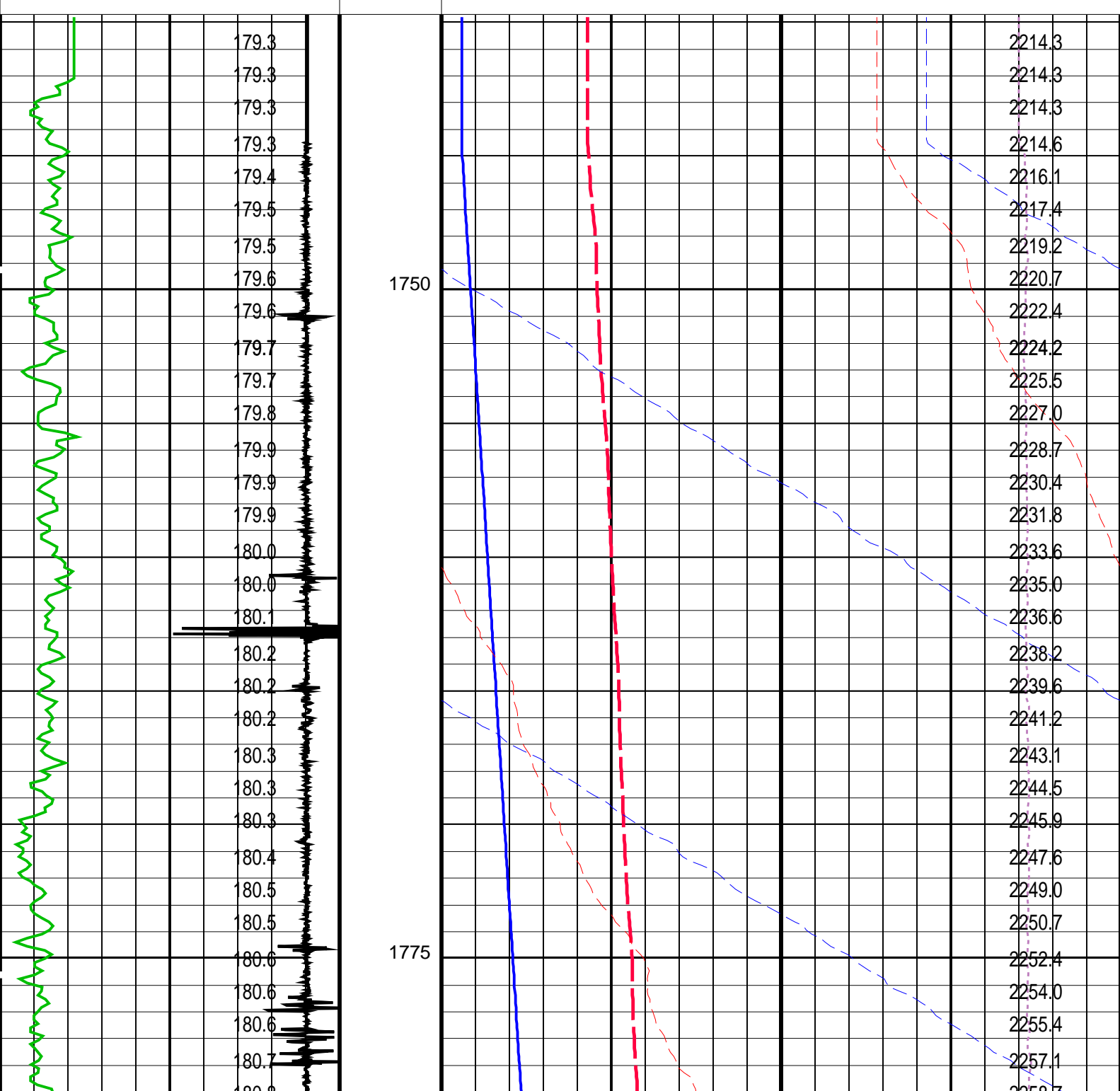
MCM

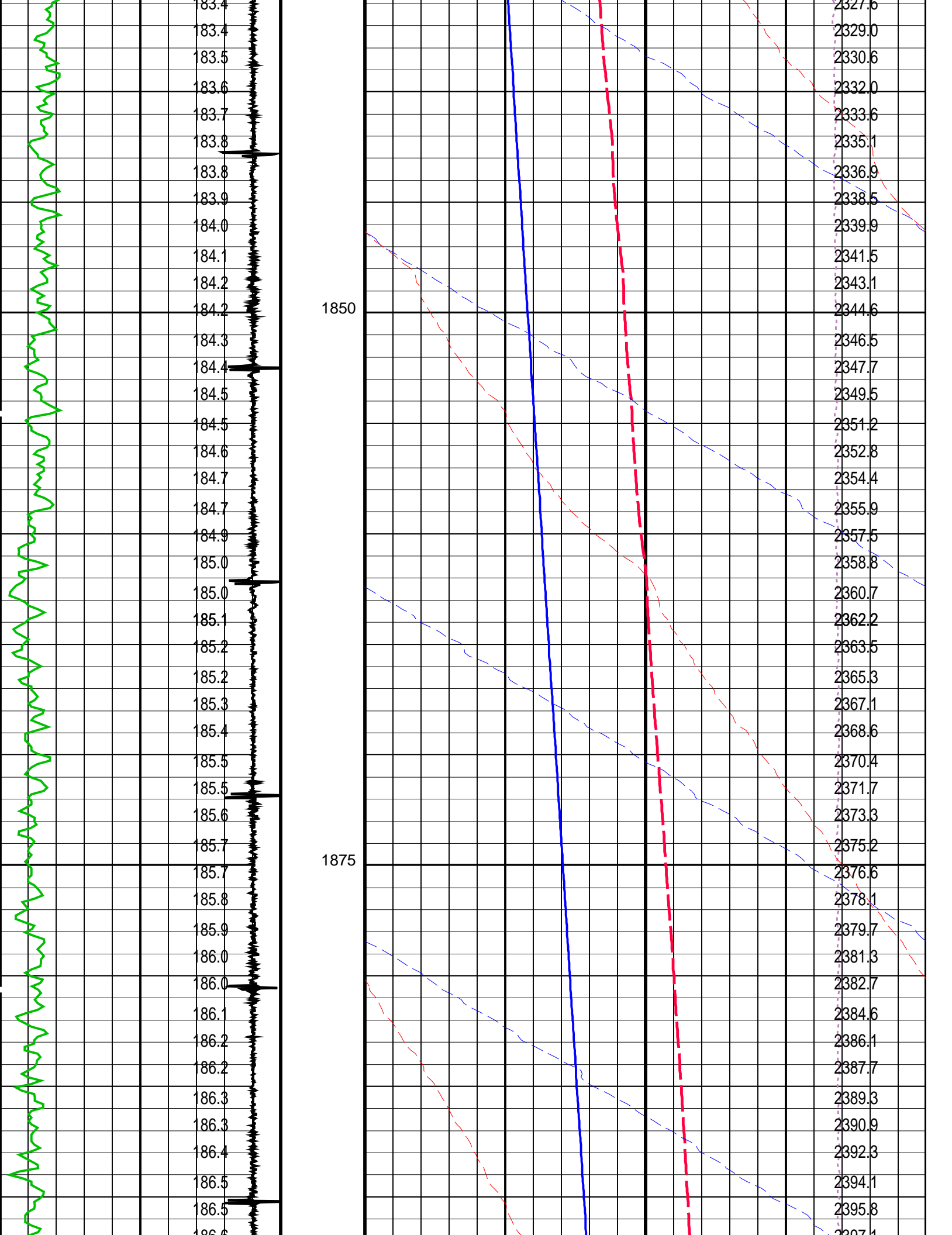
MWPT-CA	16C0-147	MWGT-AA	16C0-147
---------	----------	---------	----------

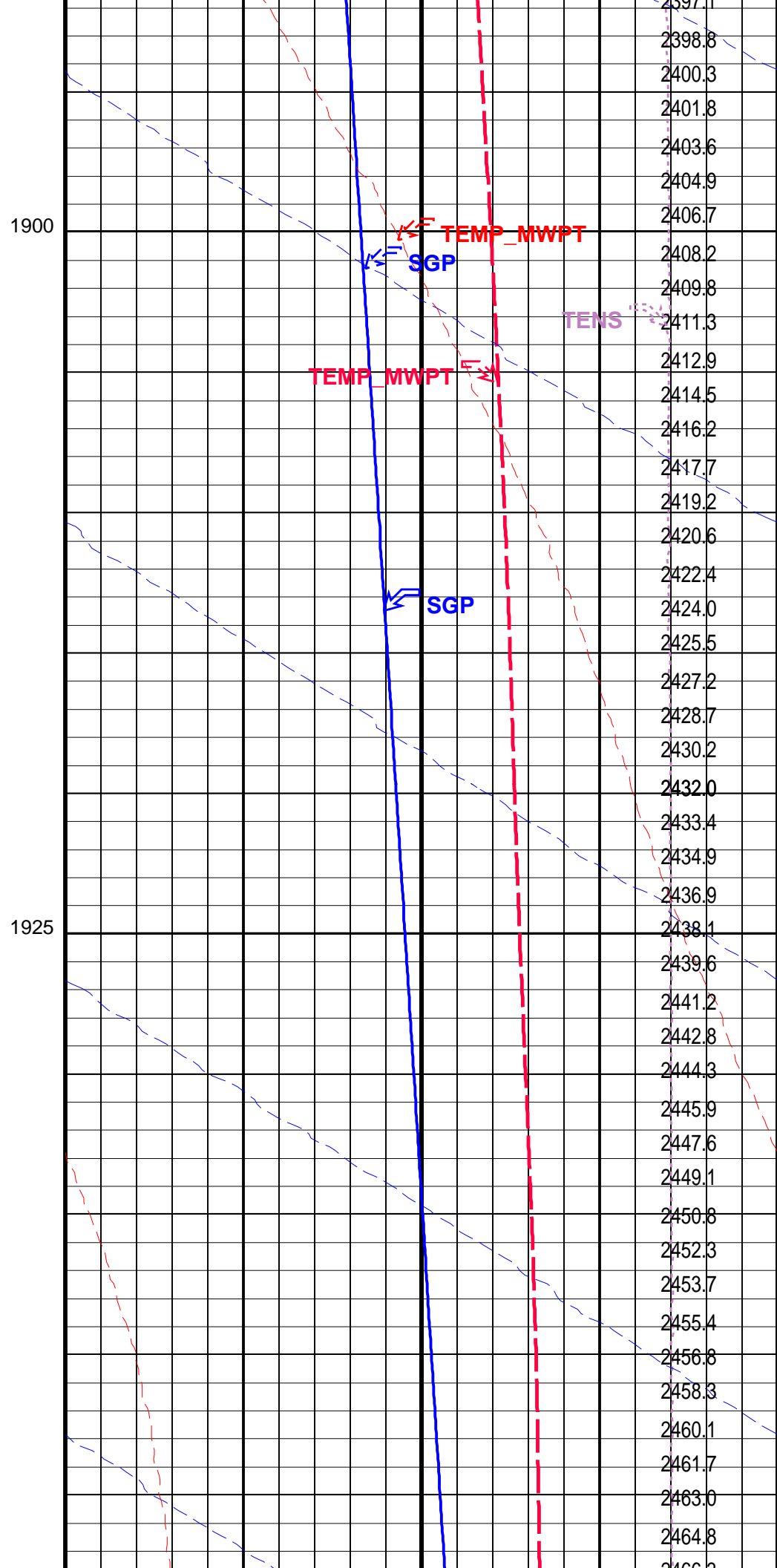
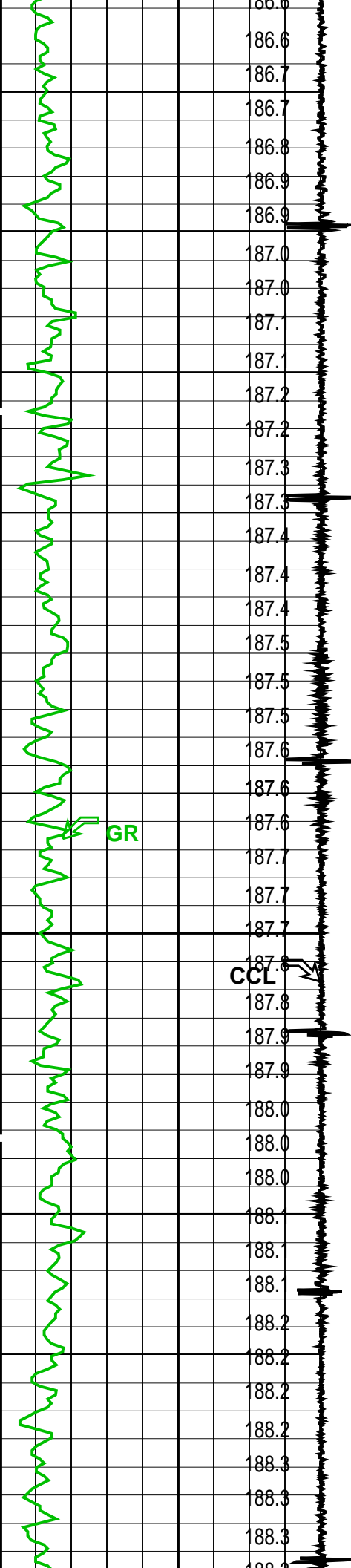
PIP SUMMARY

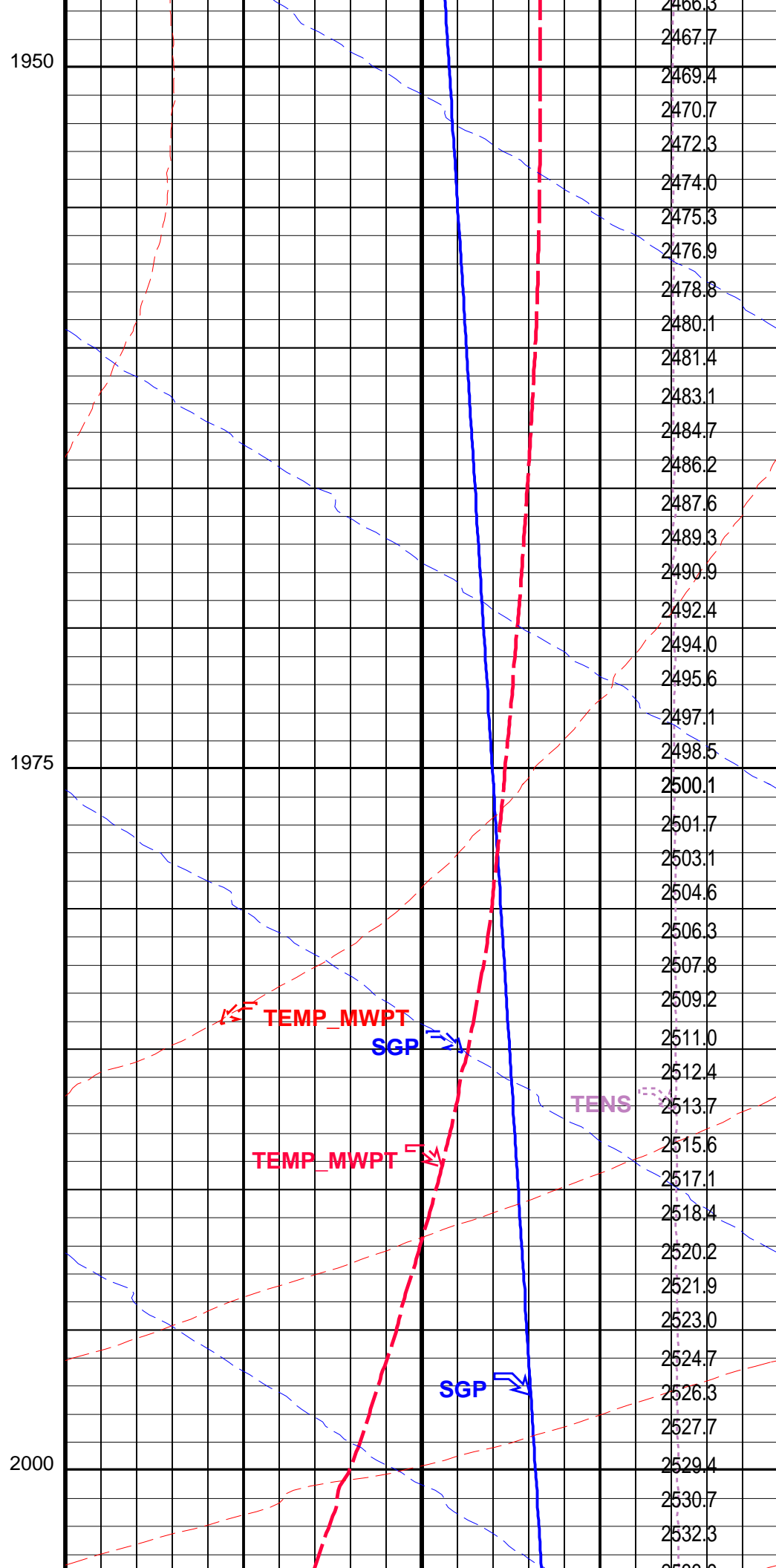
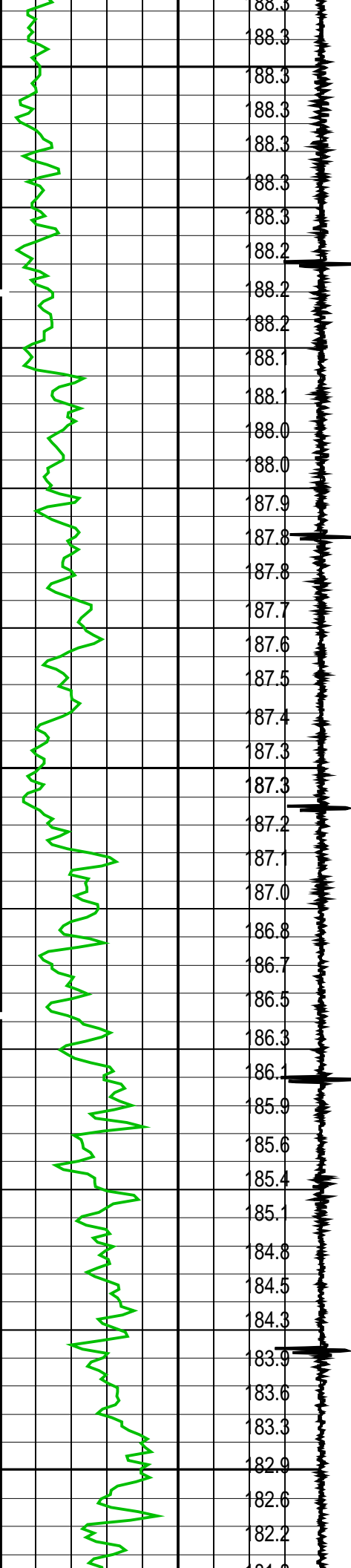
Time Mark Every 60 S

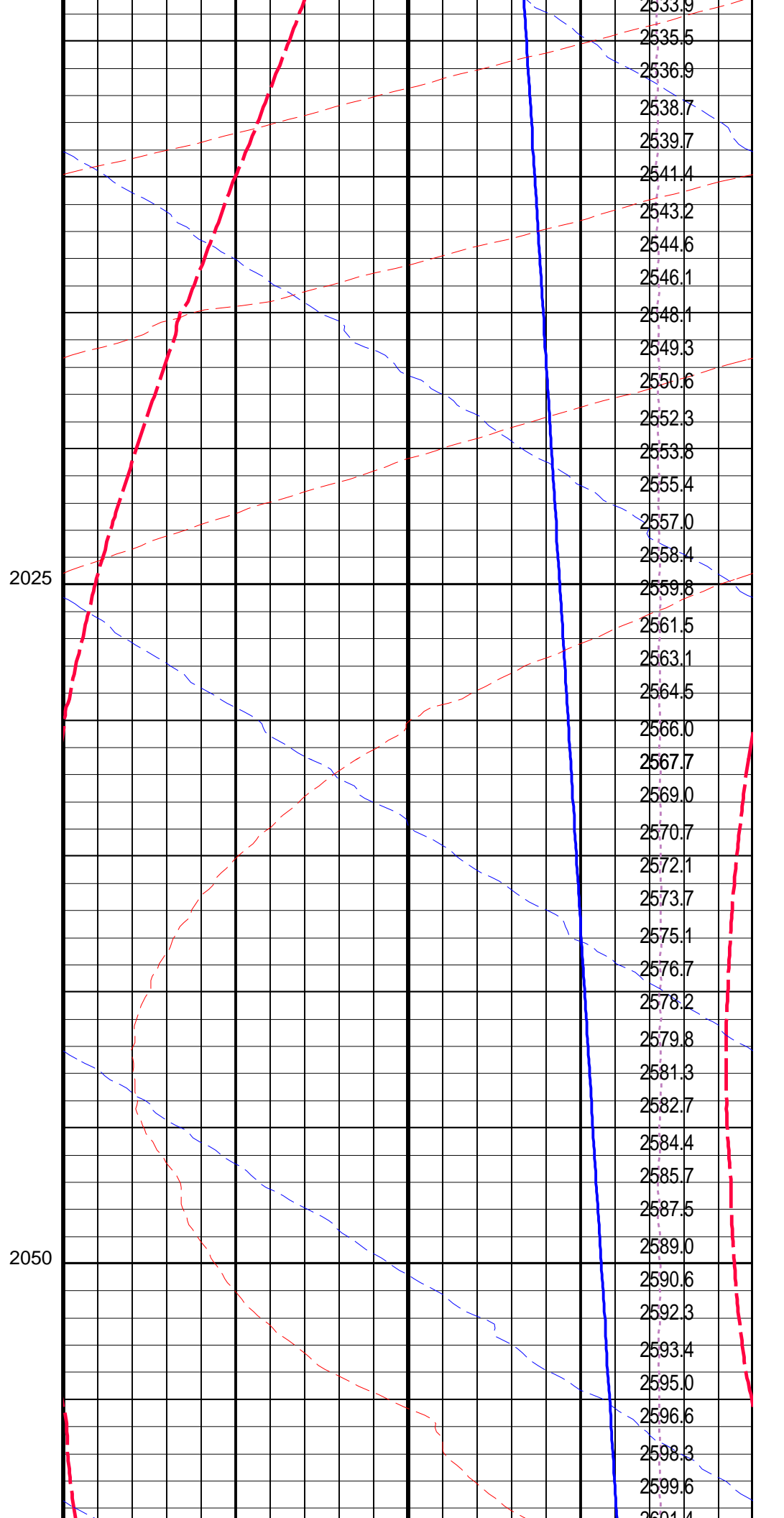
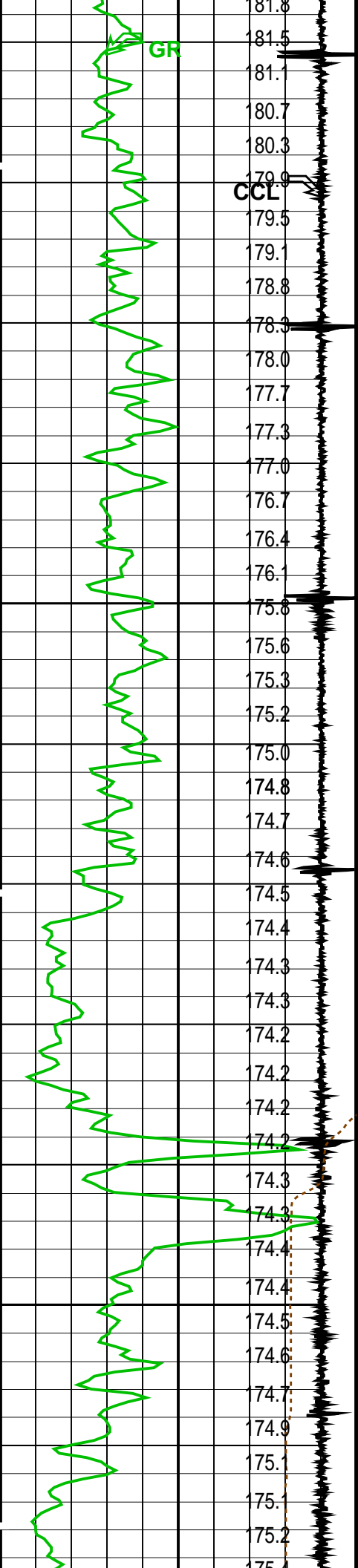
Temperature (TEMP_MWPT) (DEGF)		Pressure (SGP) (PSIA)	
CCL From CCL to T1		Tension (TENS) (LBF)	
Gamma Ray (GR) (GAPI)		0 2000	
Casing Collar Locator (CCL)		Temperature (TEMP_MWPT) (DEGF)	
-19 (----) 1		0 20	
Cable Speed (CS) (F/HR)		Temperature (TEMP_MWPT) (DEGF)	
0 5000		175 195	
		Strain Gauge Pressure (SGP) (PSIA)	
		2200 2700	

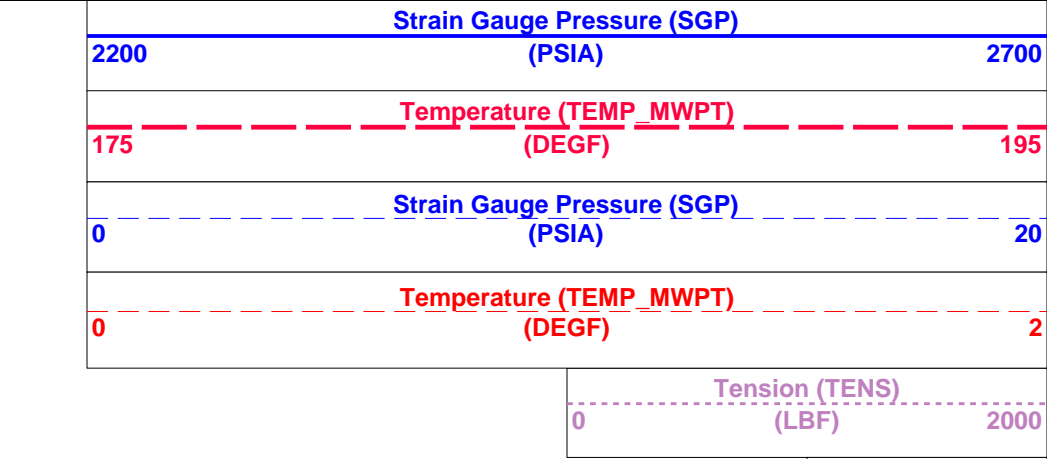
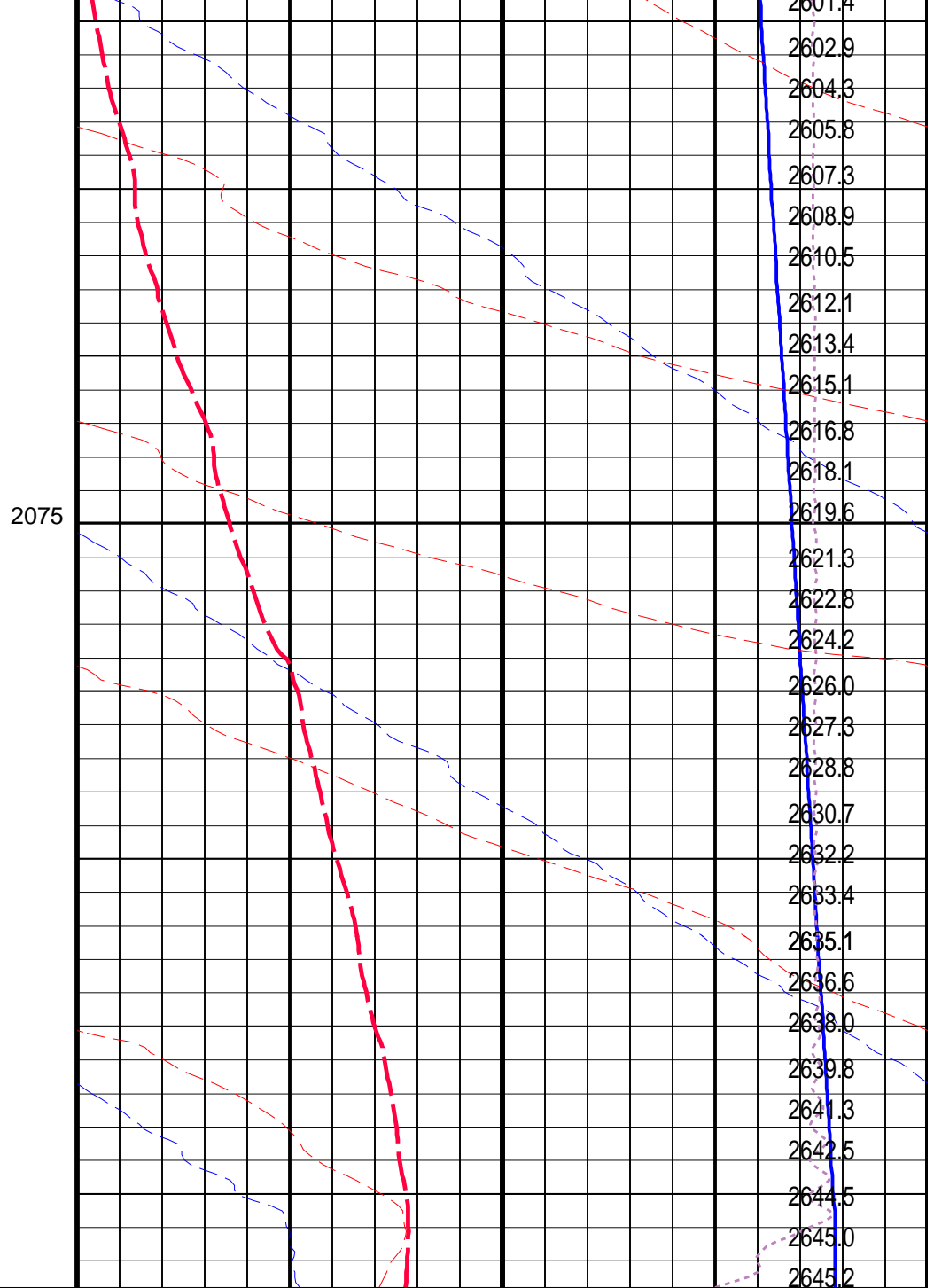
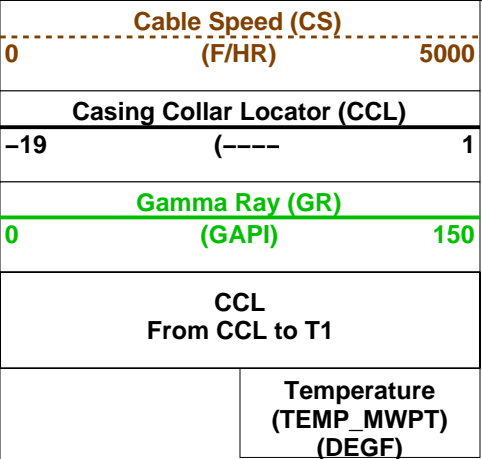
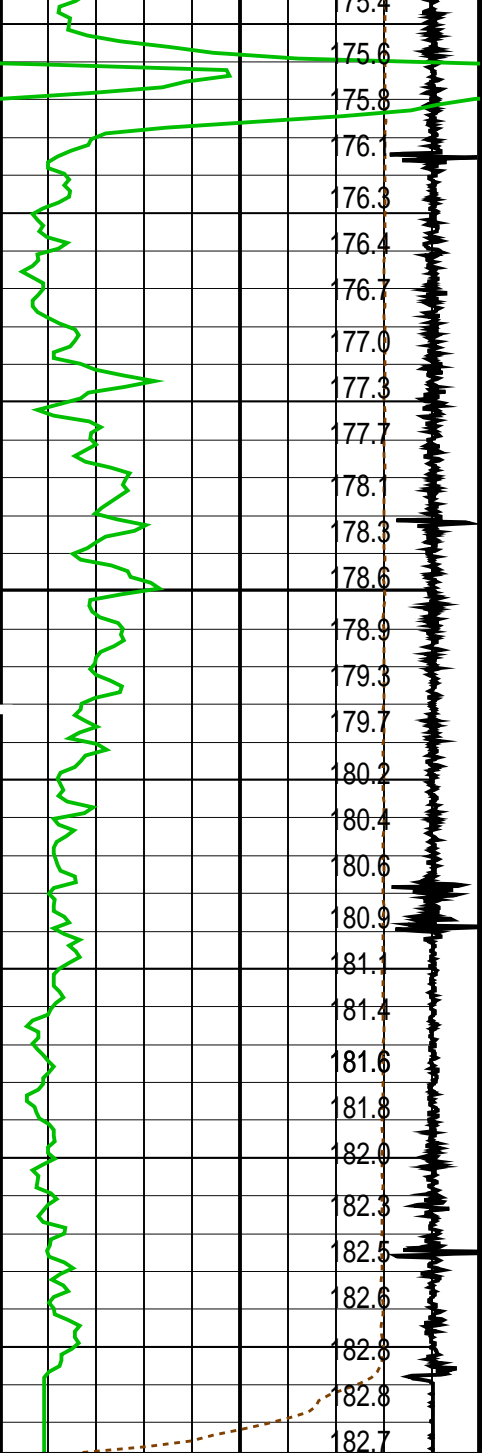












Time Mark Every 60 S

Parameters

DLIS Name	Description	Value	
MWPT-CA: MEASUREMENT WHILE PERFORATING TOOL			
DEVI_FL_CORR	Deviation Angle for Flow Line Correction	0	DEG
FLD	Flow Line Density	1	G/C3
MWPT_NULL_SOURCE	MWPT NULL Temperature Source	TEMS	
MWPT_NULL_TEMP	MWPT NULL Temperature	0.0	DEGC
System and Miscellaneous			
DO	Depth Offset for Playback	0.0	M
PP	Playback Processing	NORMAL	

Format: MWP

Vertical Scale: 1:200


Graphics File Created: 28-Feb-2009 14:43

OP System Version: 16C0-147

MCM

MWPT-CA16C0-147MWGT-AA16C0-147

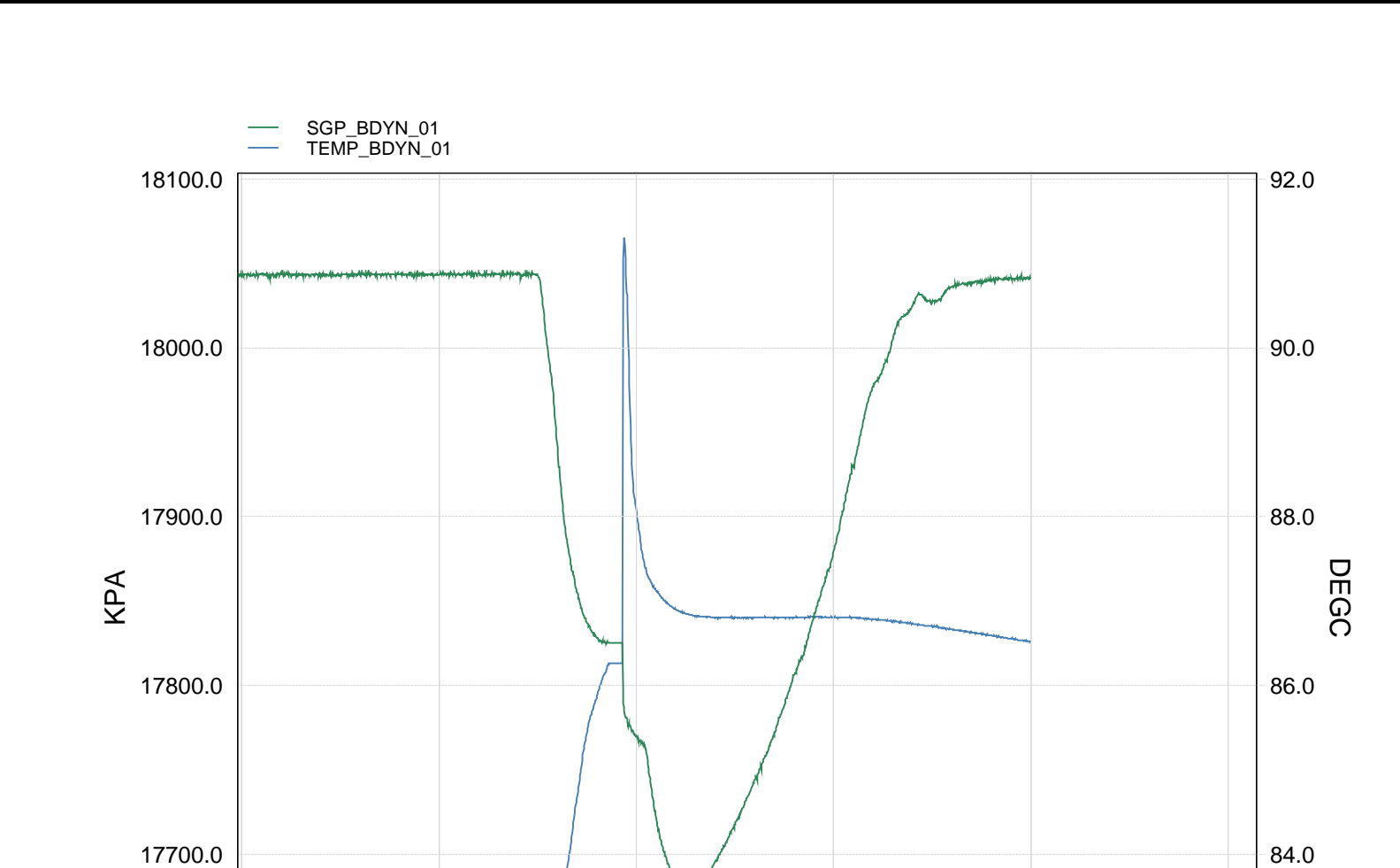
Input DLIS Files						
DEFAULT	PERFO_033LUP	FN:32	PRODUCER	28-Feb-2009 14:25	2097.8 M	1742.1 M
Output DLIS Files						
DEFAULT	PERFO_034PUP	FN:33	PRODUCER	28-Feb-2009 14:43		

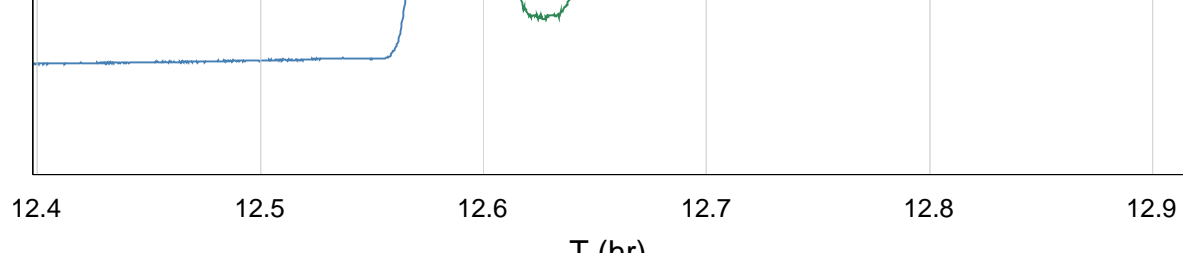


Gun # 1 Fired @

2083m to 2084m MDKB

MAXIS Field Log





TIME	KPA	PSIA	DEGF
6000.0	18043.6809	2617.0189	181.7978
6030.0	18043.1934	2616.9482	181.8007
6060.0	18043.6949	2617.0209	181.8039
6090.0	18043.3731	2616.9743	181.7985
6120.0	17975.4094	2607.1170	181.8331
6150.0	17878.4139	2593.0490	183.1907
6180.0	17839.2478	2587.3684	185.6581
6210.0	17825.6913	2585.4022	186.9163
6240.0	17825.3624	2585.3545	187.2639
6270.0	17770.6482	2577.4189	190.7431
6300.0	17739.3022	2572.8725	188.9942
6330.0	17694.0771	2566.3132	188.5487
6360.0	17682.3090	2564.6064	188.3438
6390.0	17683.8604	2564.8314	188.2683
6420.0	17696.7902	2566.7067	188.2364
6450.0	17716.2863	2569.5343	188.2418
6480.0	17736.9968	2572.5382	188.2409
6510.0	17759.4649	2575.7969	188.2496
6540.0	17786.1691	2579.6700	188.2447
6570.0	17814.5136	2583.7810	188.2513
6600.0	17844.5376	2588.1356	188.2627
6630.0	17875.5217	2592.6295	188.2542
6660.0	17919.3168	2598.9814	188.2538
6690.0	17961.1781	2605.0529	188.2277
6720.0	17984.5704	2608.4457	188.1940
6750.0	18014.1606	2612.7374	188.1553
6780.0	18026.9953	2614.5989	188.1067
6810.0	18027.3273	2614.6470	188.0657
6840.0	18034.8163	2615.7332	188.0098
6870.0	18037.7672	2616.1612	187.9543
6900.0	18038.9197	2616.3284	187.9020
6930.0	18040.6560	2616.5802	187.8358
6960.0	18041.0085	2616.6313	187.7897
6990.0	18041.8686	2616.7561	187.7434

Schlumberger

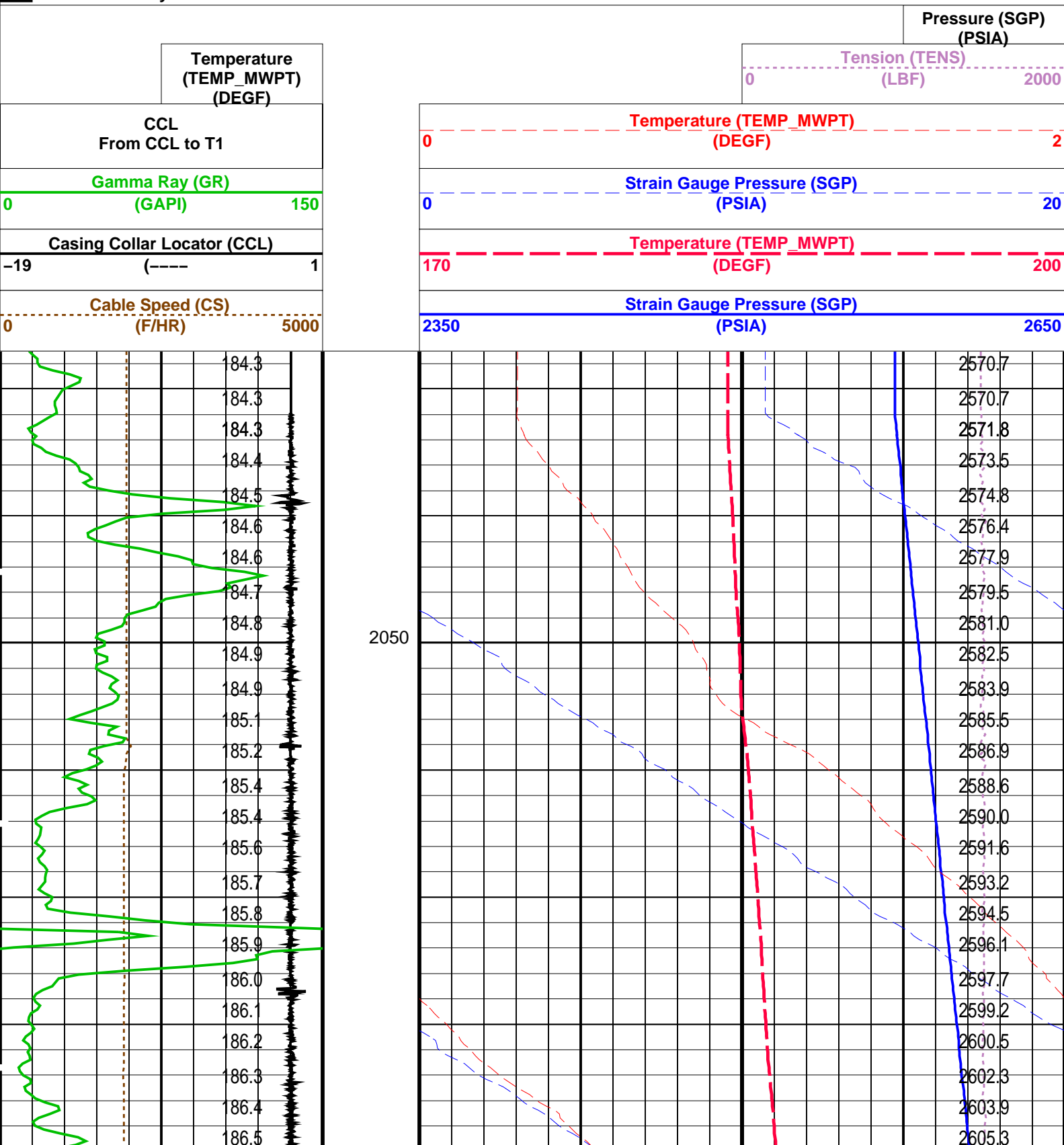
Gun Shooting Pass

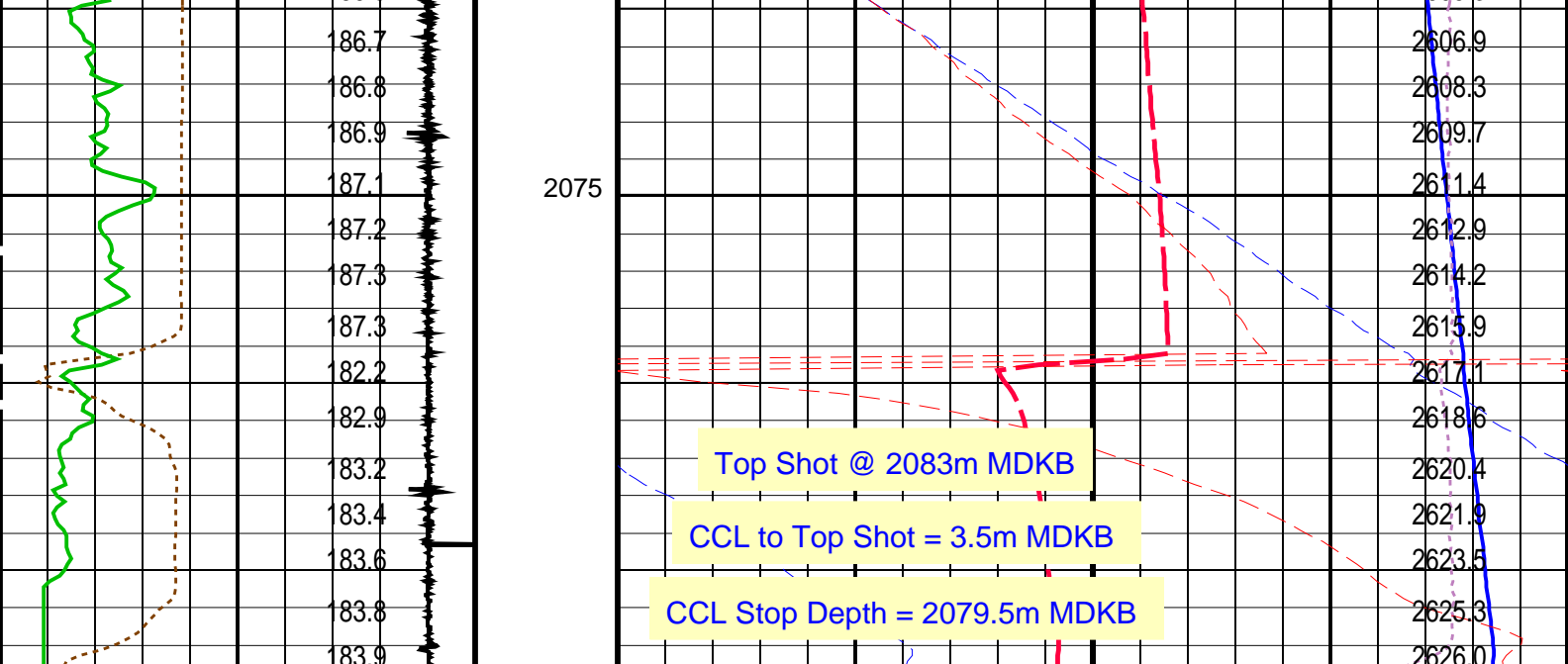
MAXIS Field Log

DEFAULT	PERFO_025LUP	FN:24	PRODUCER	28-Feb-2009 11:44	2087.6 M	2038.5 M
---------	--------------	-------	----------	-------------------	----------	----------

MWP_GUN	16C0-147	MWPT-CA	16C0-147
MWGT-AA	16C0-147		

Time Mark Every 60 S





Cable Speed (CS) (F/HR)	
0	5000
Casing Collar Locator (CCL) (----)	
-19	1
Gamma Ray (GR) (GAPI)	
0	150
CCL From CCL to T1	
Temperature (TEMP_MWPT) (DEGF)	

Strain Gauge Pressure (SGP) (PSIA)	
2350	2650
Temperature (TEMP_MWPT) (DEGF)	
170	200
Strain Gauge Pressure (SGP) (PSIA)	
0	20
Temperature (TEMP_MWPT) (DEGF)	
0	2
Tension (TENS) (LBF)	
0	2000
Pressure (SGP) (PSIA)	

PIP SUMMARY

Time Mark Every 60 S

Parameters

DLIS Name	Description	Value
MWPT-CA: MEASUREMENT WHILE PERFORATING TOOL		
DEVI_FL_CORR	Deviation Angle for Flow Line Correction	0 DEG
FLD	Flow Line Density	1 G/C3
MWPT_NULL_SOURCE	MWPT NULL Temperature Source	TEMS
MWPT_NULL_TEMP	MWPT NULL Temperature	0.0 DEGC

Format: MWP Vertical Scale: 1:200

Graphics File Created: 28-Feb-2009 11:44

OP System Version: 16C0-147

MCM

MWP_GUN	16C0-147	MWPT-CA	16C0-147
MWGT-AA	16C0-147		

Output DLIS Files

DEFAULT	PERFO_025LUP	FN:24	PRODUCER	28-Feb-2009 11:44
---------	--------------	-------	----------	-------------------



Gun Correlation Pass

Company: Esso Australia Pty Ltd.

Well: A-15

Output DLIS Files

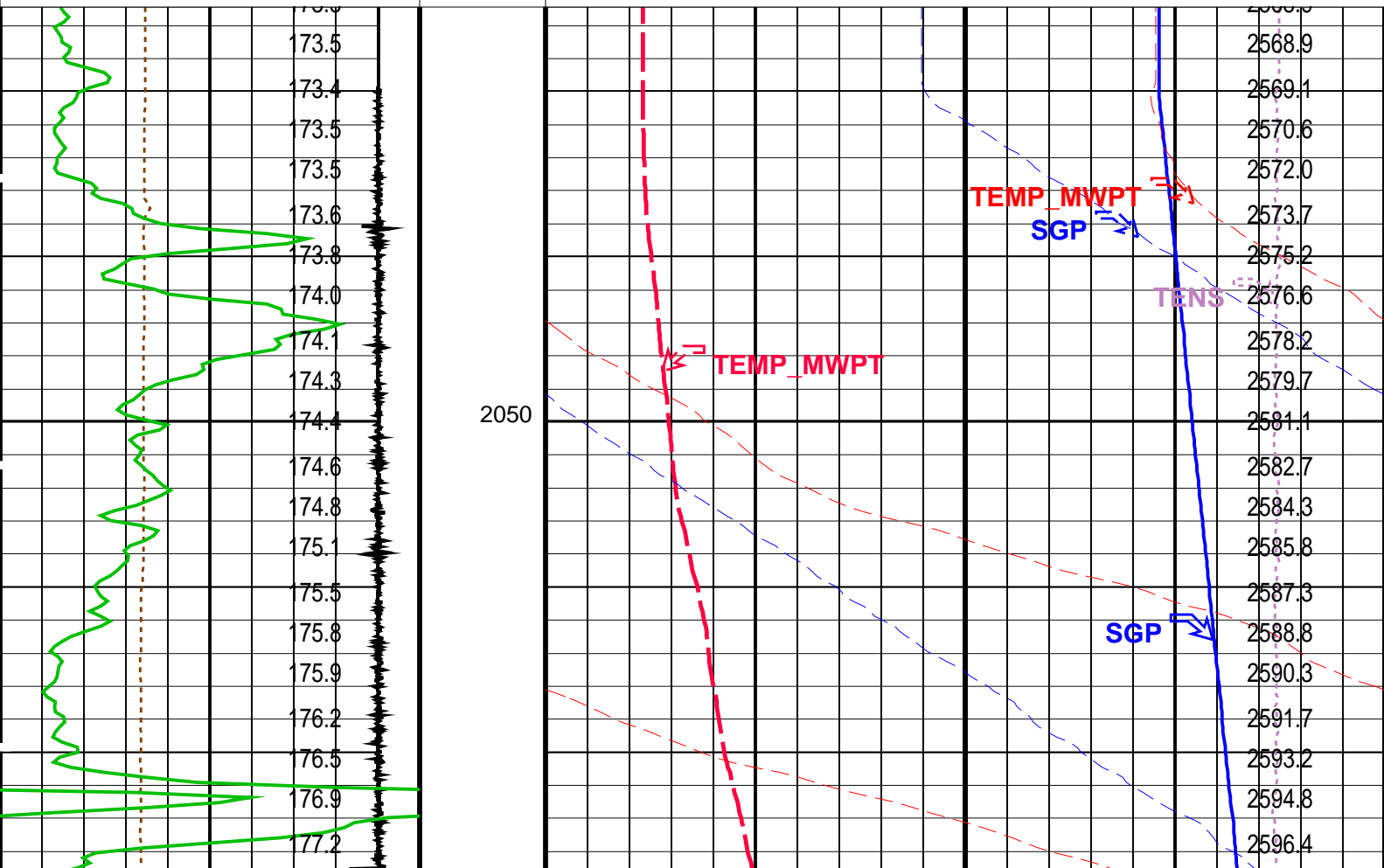
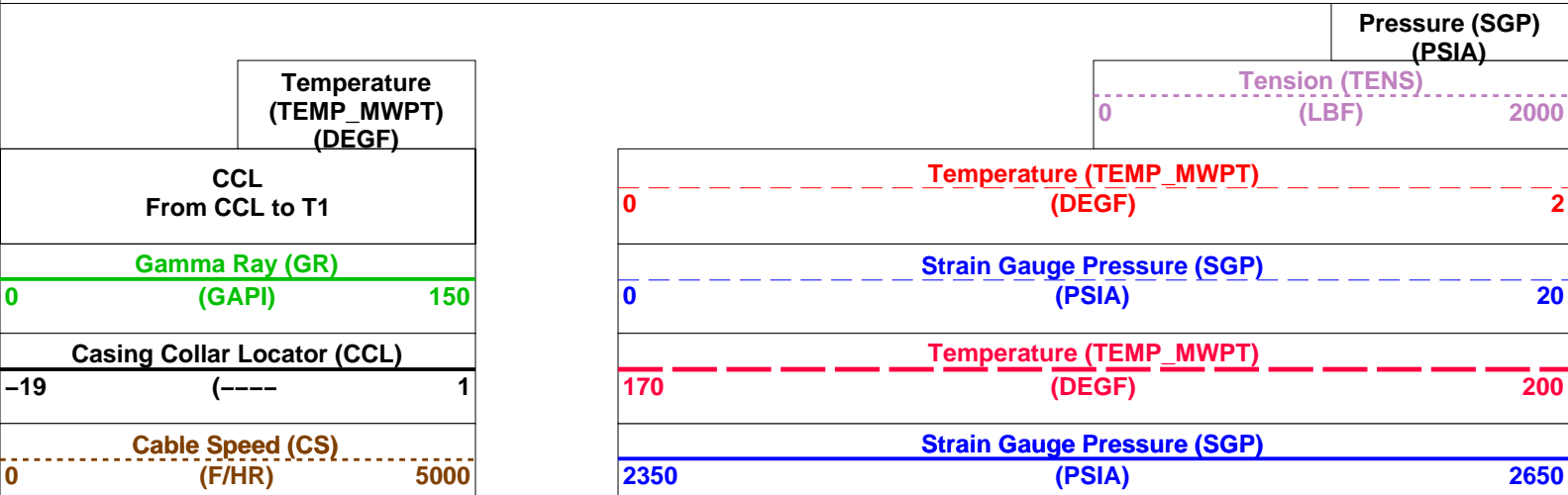
DEFAULT PERFO_024LUP FN:23 PRODUCER 28-Feb-2009 11:34 2083.5 M 2037.4 M

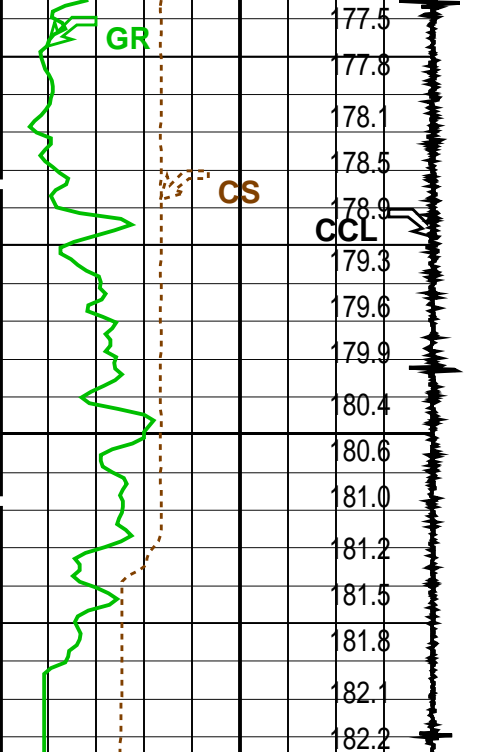
OP System Version: 16C0-147
MCM

MWP_GUN 16C0-147
MWGT-AA 16C0-147 MWPT-CA 16C0-147

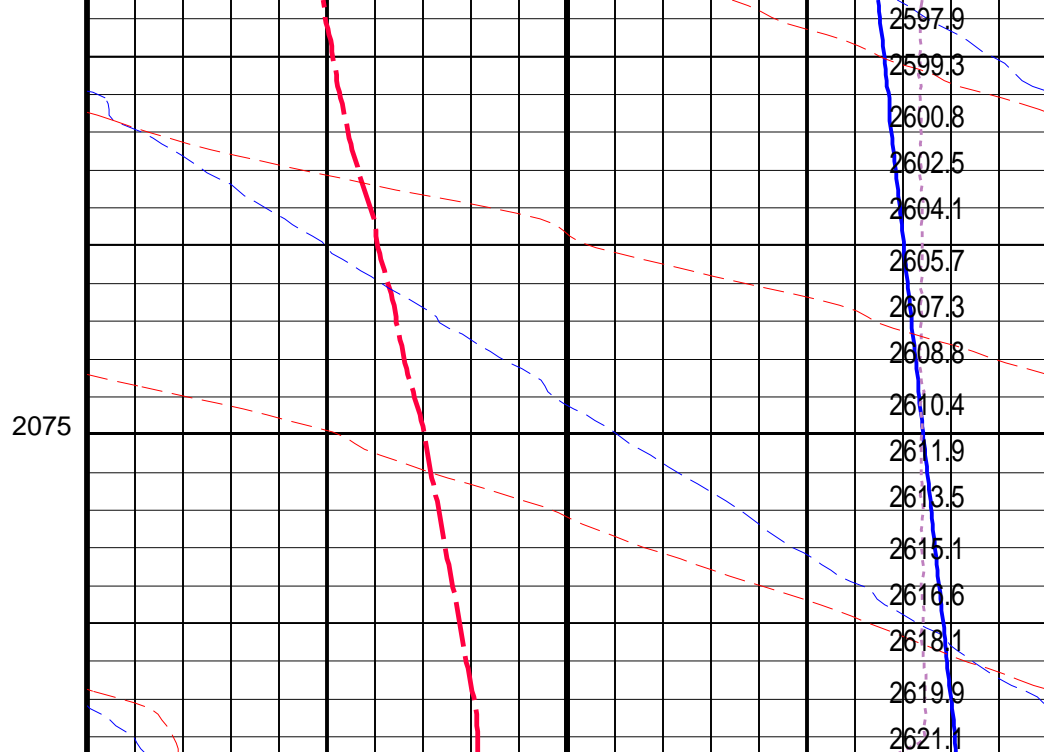
PIP SUMMARY

Time Mark Every 60 S





Cable Speed (CS) (F/HR)	
0	5000
Casing Collar Locator (CCL) (----	
-19	1
Gamma Ray (GR) (GAPI)	
0	150
CCL From CCL to T1	
Temperature (TEMP_MWPT) (DEGF)	



Strain Gauge Pressure (SGP) (PSIA)	
2350	2650
Temperature (TEMP_MWPT) (DEGF)	
170	200
Strain Gauge Pressure (SGP) (PSIA)	
0	20
Temperature (TEMP_MWPT) (DEGF)	
0	2
Tension (TENS) (LBF)	
0	2000
Pressure (SGP) (PSIA)	

PIP SUMMARY	
-------------	--

Time Mark Every 60 S	
----------------------	--

Parameters		
DLIS Name	Description	Value
MWPT-CA: MEASUREMENT WHILE PERFORATING TOOL		
DEVI_FL_CORR	Deviation Angle for Flow Line Correction	0 DEG
FLD	Flow Line Density	1 G/C3
MWPT_NULL_SOURCE	MWPT NULL Temperature Source	TEMS
MWPT_NULL_TEMP	MWPT NULL Temperature	0.0 DEGC

Format: MWP	Vertical Scale: 1:200	Graphics File Created: 28-Feb-2009 11:34
-------------	-----------------------	--

OP System Version: 16C0-147			
MCM			
MWP_GUN	16C0-147	MWPT-CA	16C0-147
MWGT-AA	16C0-147		

Output DLIS Files			
DEFAULT	PERFO_024LUP	FN:23	PRODUCER 28-Feb-2009 11:34

Schlumberger		SIGMA Page # 2	
--------------	--	----------------	--

MAXIS Field Log

Company: Esso Australia Pty Ltd.

Well: A-15

Output DLIS Files

DEFAULT RST_PSP_011LUP FN:10 PRODUCER 27-Feb-2009 14:34 2100.4 M 2034.5 M

OP System Version: 16C0-147

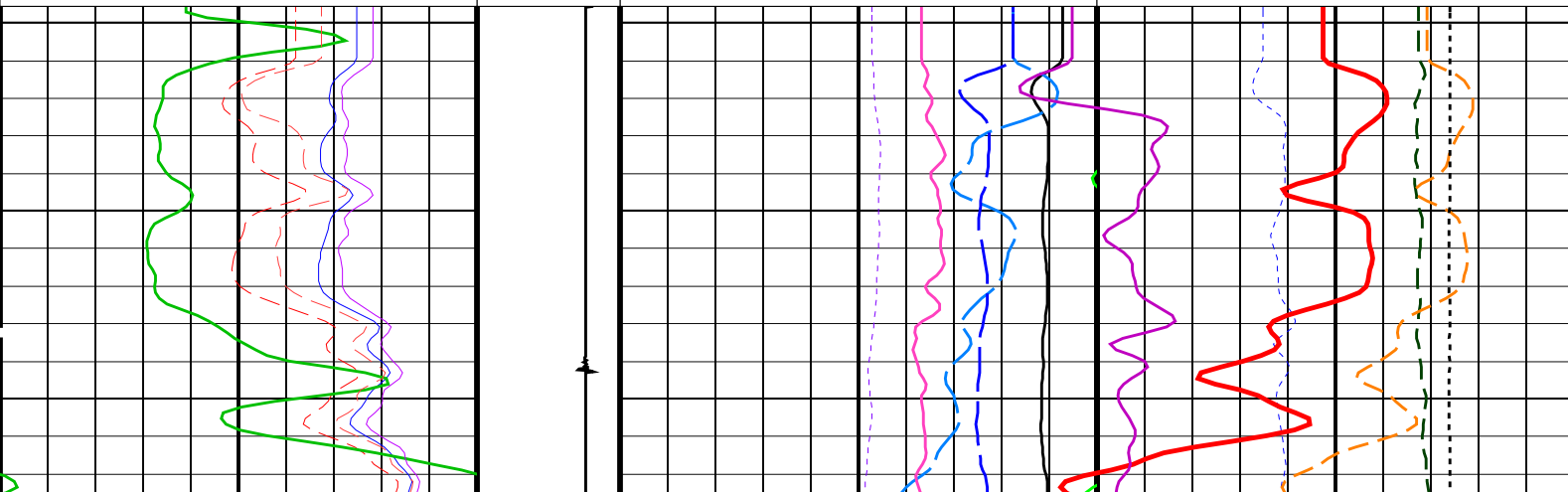
MCM

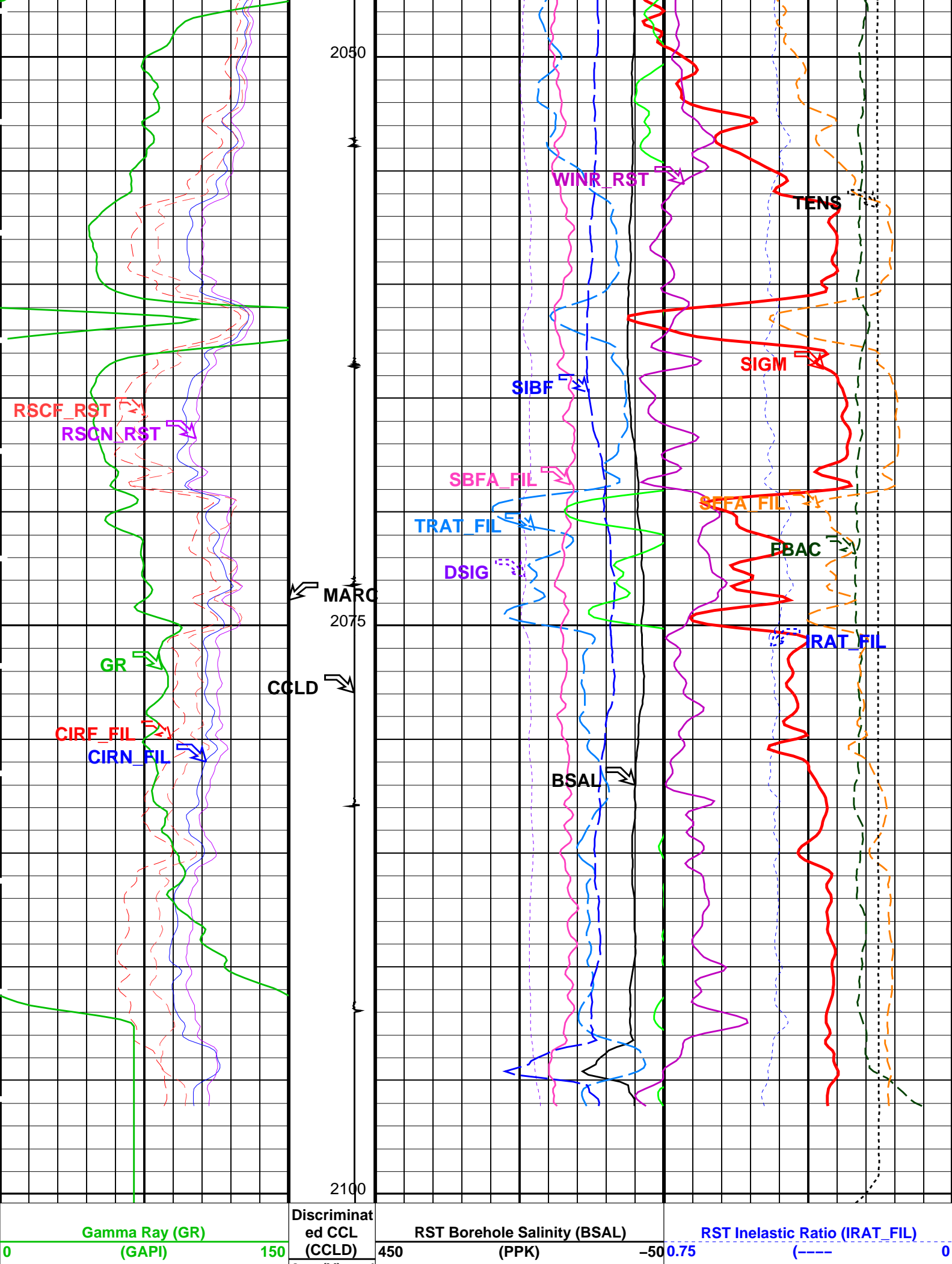
RST-C SRPC-3624-Q2_2008_OP16_b PSPT-B SRPC-3624-Q2_2008_OP16_b

PIP SUMMARY

Time Mark Every 60 S

		RST Sigma (SIGM)	
60		(CU)	
		0	
		RST Weighted Inelastic Ratio (WINR_RST)	
0.4		(----)	
		-0.4	
		RST Porosity (TPHI)	
0.6		(V/V)	
		0	
RST Far Effective Capture CR (RSCF_RST)		RST Sigma Borehole Fluid (SIBF)	
45		(CU)	
		0	
RST Near Effective Capture CR (RSCN_RST)		Sigma Borehole Far Apparent (SBFA_FIL)	
45		(CU)	
		0	
RST Capture to Inelastic Ratio Far (CIRF_FIL)		RST Capture Ratio (TRAT_FIL)	
5		(----)	
		0	
		Sigma Formation Far Apparent (SFFA_FIL)	
		(CU)	
		0	
		Tension (TENS)	
		(LBF)	
		0 3000	
RST Capture to Inelastic Ratio Near (CIRN_FIL)		RST Sigma Difference (DSIG)	
2.5		(CU)	
		-30 30	
		MCS Far Background (filtered) (FBAC)	
		(CPS)	
		0 5000	
Gamma Ray (GR)		RST Borehole Salinity (BSAL)	
(GAPI)		(PPK)	
0 150		450 -50	
		RST Inelastic Ratio (IRAT_FIL)	
		(----)	
		0.75 0	





RST Capture to Inelastic Ratio Near (CIRN_FIL) 2.5 (----) 0	Minitron Arc Detection (MARC) 0 (---- 5	RST Sigma Difference (DSIG) (CU) -30 30	MCS Far Background (filtered) (FBAC) (CPS) 5000
RST Capture to Inelastic Ratio Far (CIRF_FIL) 5 (----) 0		RST Capture Ratio (TRAT_FIL) (----) 0.5 1.5 0.5	Sigma Formation Far Apparent (SFFA_ FIL) (CU) 0 60
RST Near Effective Capture CR (RSCN_ RST) 45 (----) 0		Sigma Borehole Far Apparent (SBFA_ FIL) (CU) 0 150	Tension (TENS) (LBF) 3000 0
RST Far Effective Capture CR (RSCF_ RST) 45 (----) 0		RST Sigma Borehole Fluid (SIBF) (CU) 0 100	
		RST Porosity (TPHI) (V/V) 0 0.6	
		RST Weighted Inelastic Ratio (WINR_RST) (----) -0.4 0.4	
		RST Sigma (SIGM) (CU) 0 60	

PIP SUMMARY

Time Mark Every 60 S

Parameters

DLIS Name	Description	Value
RST-C: Reservoir Saturation Pro Tool C		
AIRB	RST Air Borehole	No
BHS	Borehole Status	CASED
BSALOPT	RST Borehole Salinity Option	Unknown
BSFL	RST Borehole Salinity Filter Length	51
DFPC	RST Depth Filter Processing Constant	One
DFPC_TDTL	RST Depth Filter Processing Constant (TDT-like)	Two
MATR	Rock Matrix for Neutron Porosity Corrections	SANDSTONE
NORM_IRAT_RST	RST Normalized Inelastic Ratio	0.48
NORM_SIGM_RST	RST Normalized Sigma	30 CU
RGAI	Near/Far Gain Calibration Ratio	1
TIER_SIGM	RST Sigma Acquisition Mode	0_RST_Sigma
PSPT-B: Production Services Logging Platform		
BHS	Borehole Status	CASED
MATR	Rock Matrix for Neutron Porosity Corrections	SANDSTONE
System and Miscellaneous		
BS	Bit Size	8.000 IN
BSAL	Borehole Salinity	-50000.00 PPM
CSIZ	Current Casing Size	4.500 IN
CWEI	Casing Weight	38.60 LB/F

Format: RST_SIG_ANSW Vertical Scale: 1:200 Graphics File Created: 27-Feb-2009 14:34

OP System Version: 16C0-147

MCM

RST-C SRPC-3624-Q2_2008_OP16_b PSPT-B SRPC-3624-Q2_2008_OP16_b

Output DLIS Files

DEFAULT RST_PSP_011LUP FN:10 PRODUCER 27-Feb-2009 14:34



SIGMA Pass # 1

Company: Esso Australia Pty Ltd.

Well: A-15

Input DLIS Files

DEFAULT RST_PSP_009LUP FN:8 PRODUCER 27-Feb-2009 14:16 2101.1 M 2033.8 M

Output DLIS Files

DEFAULT RST_PSP_010PUP FN:9 PRODUCER 27-Feb-2009 14:31 2101.1 M 2028.3 M

OP System Version: 16C0-147

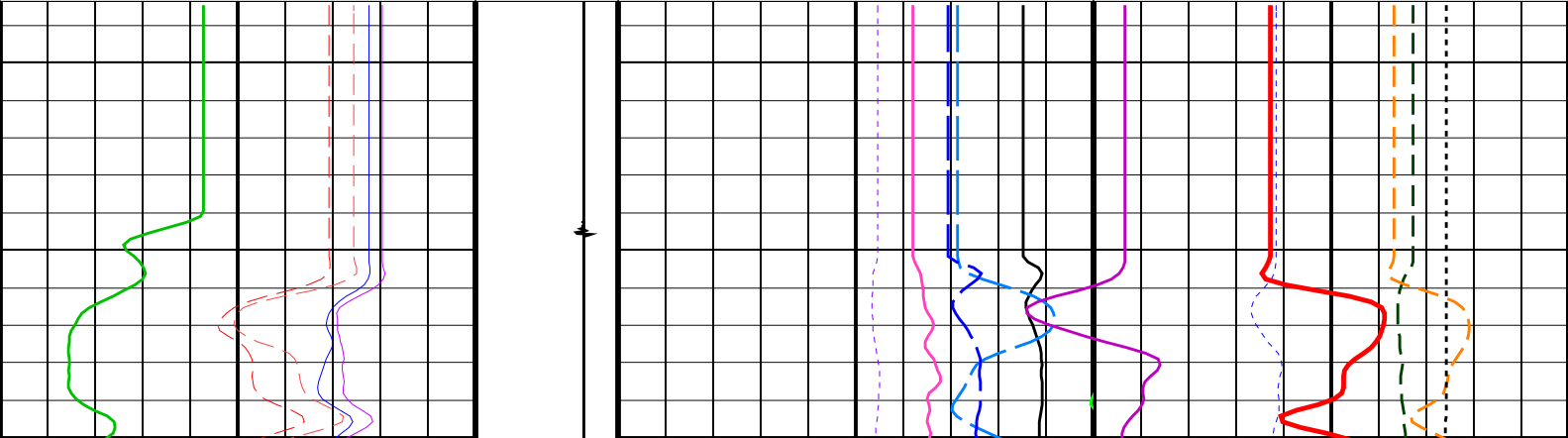
MCM

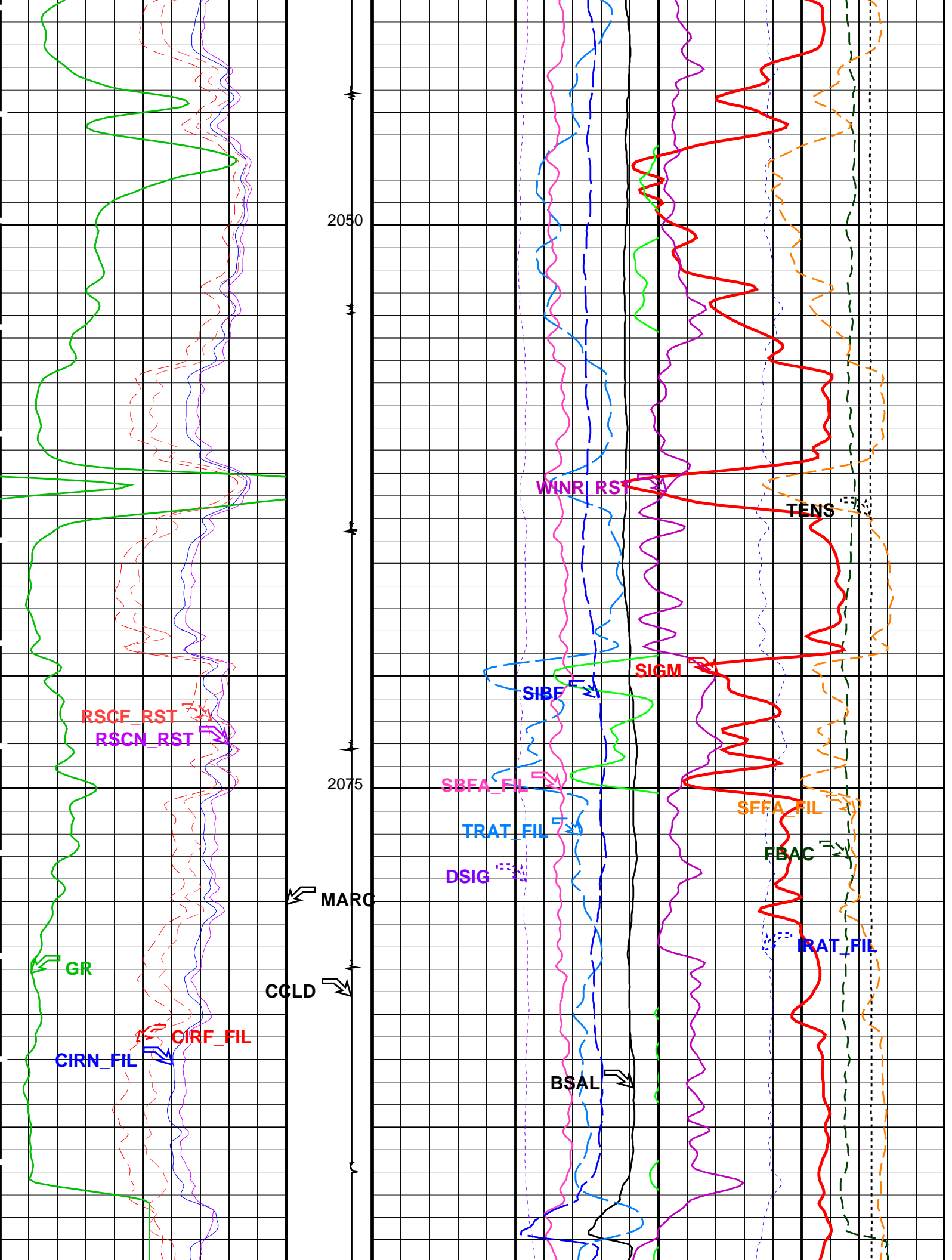
RST-C SRPC-3624-Q2_2008_OP16_b PSPT-B SRPC-3624-Q2_2008_OP16_b

PIP SUMMARY

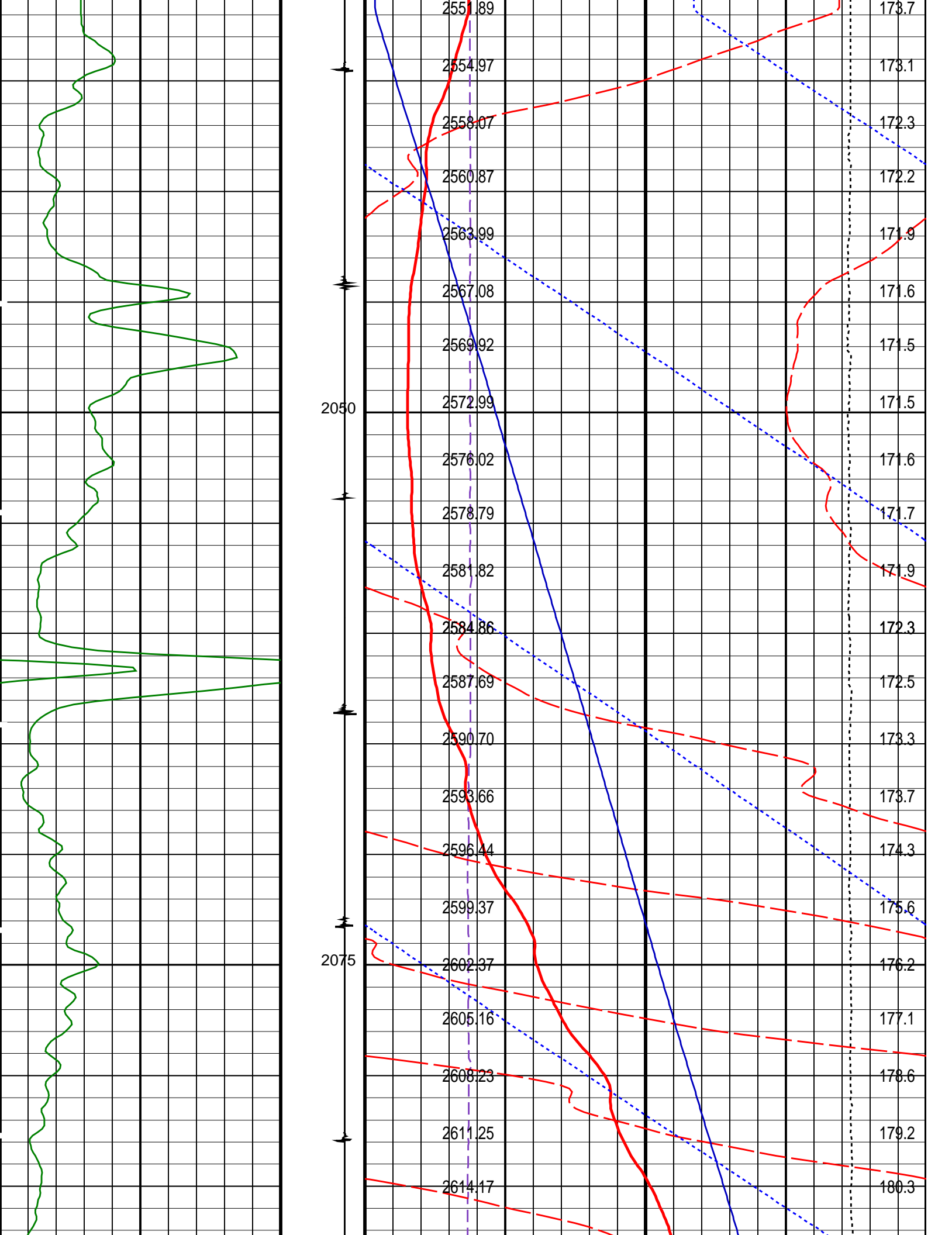
Time Mark Every 60 S

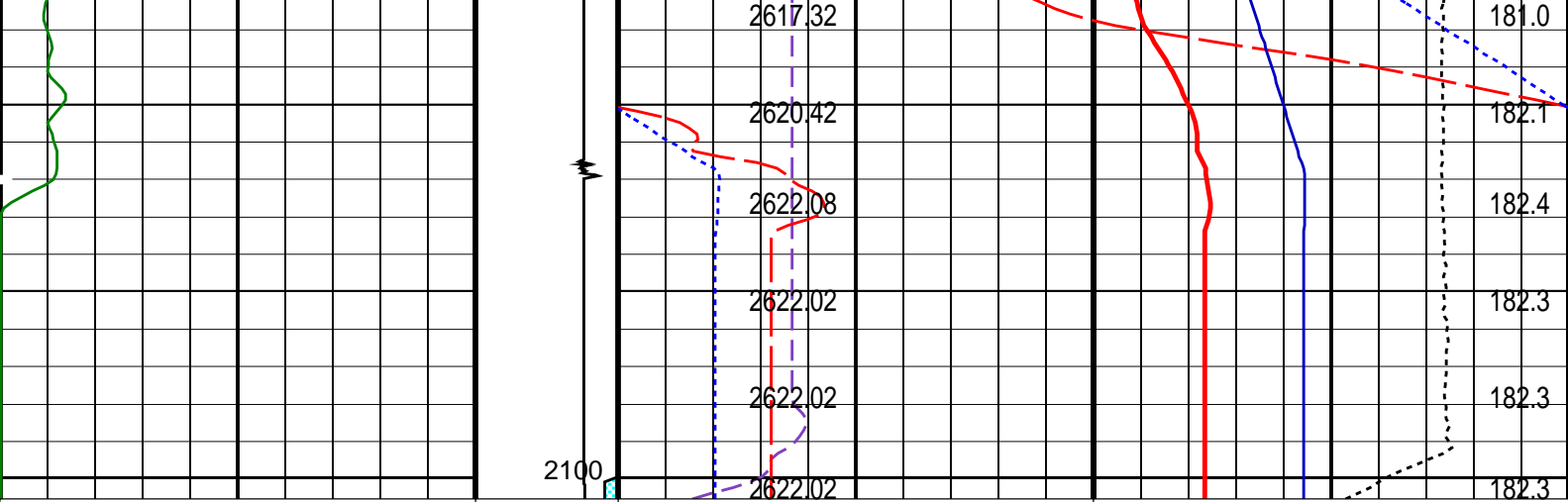
		RST Sigma (SIGM)	
60		(CU)	
		0	
		RST Weighted Inelastic Ratio (WINR_RST)	
0.4		(----	
		-0.4	
		RST Porosity (TPHI)	
0.6		(V/V)	
		0	
RST Far Effective Capture CR (RSCF_RST)		RST Sigma Borehole Fluid (SIBF)	
45		100	
(----		(CU)	
		0	
RST Near Effective Capture CR (RSCN_RST)		Sigma Borehole Far Apparent (SBFA_FIL)	
45		150	
(----		(CU)	
		0	
		Tension (TENS)	
		0 (LBF) 3000	
RST Capture to Inelastic Ratio Far (CIRF_FIL)		RST Capture Ratio (TRAT_FIL)	
5		1.5	
(----		(----	
		0.5	
		Sigma Formation Far Apparent (SFFA_FIL)	
		60	
		(CU)	
		0	
RST Capture to Inelastic Ratio Near (CIRN_FIL)		RST Sigma Difference (DSIG)	
2.5		-30	
(----		(CU)	
		30	
		MCS Far Background (filtered) (FBAC)	
		0	
		(CPS)	
		5000	
		Gamma Ray (GR)	
0		RST Borehole Salinity (BSAL)	
(GAPI)		450	
150		(PPK)	
		-50	
		RST Inelastic Ratio (IRAT_FIL)	
		0.75	
		(----	
		0	





RST-C SRPC-3624-Q2 2008 OP16 b PSPT-B SRPC-3624-Q2 2008 OP16 b





Gamma Ray (GR) (GAPI)		Discriminat ed CCL (CCLD)		Cable Speed (CS) (F/HR)		Tension (TENS) (LBF)	
0	150	3	-1	0	5000	0	2000

Perfo Zone From PERFO_ CURVE to D3T	Well Temperature (WTEP) (DEGF)		170	190
	Well Pressure (WPRE) (PSIA)	Temperature (WTEP) (DEGF)		
	Well Temperature (WTEP) (DEGF)		0	2
	Well Pressure (WPRE) (PSIA)		2550	2650
	Amplified Well Pressure (WPRE) (PSIA)		0	20

PIP SUMMARY	
Time Mark Every 60 S	

Format: PSP_1_1	Vertical Scale: 1:200	Graphics File Created: 27-Feb-2009 14:06
-----------------	-----------------------	--

OP System Version: 16C0-147 MCM			
RST-C	SRPC-3624-Q2_2008_OP16_b	PSPT-B	SRPC-3624-Q2_2008_OP16_b

Parameters		
DLIS Name	Description	Value
DO PP	System and Miscellaneous Depth Offset for Playback Playback Processing	-2.2 M NORMAL

Input DLIS Files						
DEFAULT	RST_PSP_006LUP	FN:5	PRODUCER	27-Feb-2009 13:58	2102.8 M	2033.9 M
Output DLIS Files						
DEFAULT	RST_PSP_008PUP	FN:7	PRODUCER	27-Feb-2009 14:06		

Well: **A-15**
Field: **Bream A**
Rig: **Prod4 / Crane**
Country: **Australia**

RST-C Sigma Survey
2 1/8" Powerjet MWPT Perforation Record
4.5" Posiset Plug Setting Record