



Company : Stuart Petroleum Ltd

Well : Bazzard-1

Interval : 81.00 - 822.38 meters

Created : 24/Sep/2008 5:28:00 AM



INTEQ

### FORMATION EVALUATION LOG

Drilling Rate ROP (m/hr)		CORE	MD meters 1:500	LITHOLOGY %	INTERPRETED LITHOLOGY	TOTAL GAS & RESISTIVITY	CHROMATOGRAPH	Oil Show P F G	Calcmetry	Lithology Description
200	160									
WEIGHT ON BIT (klbf)										
ROP Backup (m/hr)										
400	360	320	280	240						
			90							
			100							
			110							
			120							
			130							
			140							
			150							
			160							
			170							
			180							

NB1: 660mm (26")  
 914mm (36") H/Opener  
 Make: Reed  
 Type: Rock  
 Jets: 3x22, 1x16  
 Depth In: 106.4m  
 Depth Out: 154.0m  
 Grade: 1-1-WT-A-NB-1-NO-TD

WOB: 1-3 klbf  
 RPM: 60-80  
 GPM: 600-1140  
 SPP: 250-1150 psi

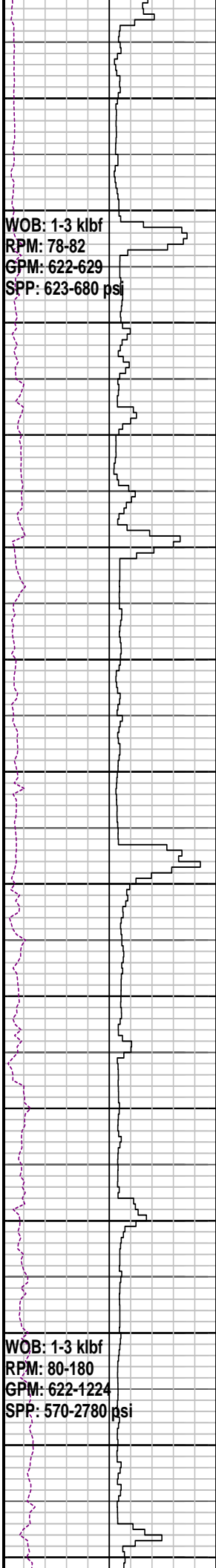
Set 762mm (30") casing shoe at 151.8m  
 21-22/09/08

NB2: 406mm (16")  
 Make: Hughes  
 Type: Rock/GKC-1V  
 Jets: 3x20  
 Depth In: 154.0m  
 Depth Out: xxx m  
 Grade: xxxxxx

RT-MSL: 38.0 mMDRT  
 Water Depth: 68.0 mMDRT  
 RT-Seabed: 106.0 mMDRT  
 Spud Bazzard-1 @ 2330 hrs on 20/09/08

Drill with seawater & Hi-Vis sweeps.  
 Returns to seabed 106.4m - xxx m

36" Section TD, 154.0m

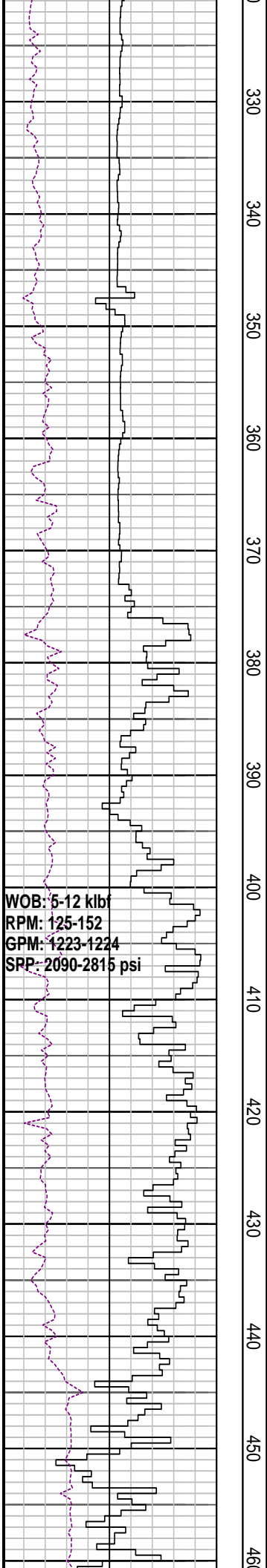


190  
200  
210  
220  
230  
240  
250  
260  
270  
280  
290  
300  
310  
320

MD: 195.13m Azi: 244.66°  
TVD: 195.12m Incl: 0.92°

Drill with seawater & Hi-Vis sweeps.  
Returns to seabed 106.4m - xxx m

Drill with seawater & Hi-Vis sweeps.  
Returns to seabed 106.4m - xxx m



330  
340  
350  
360  
370  
380  
390  
400  
410  
420  
430  
440  
450  
460

MD: 341.42m Azi: 323.79°  
TVD: 341.40m Incl: 0.03°

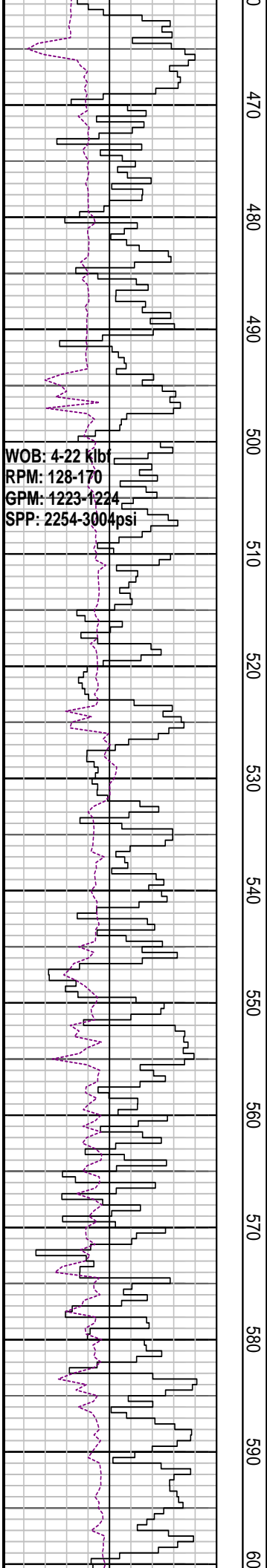
MD: 370.87m Azi: 246.56°  
TVD: 370.85m Incl: 0.36°

MD: 399.83m Azi: 249.03°  
TVD: 399.81m Incl: 0.45°

MD: 458.91m Azi: 256.36°

WOB: 5-12 klbf  
RPM: 125-152  
GPM: 1223-1224  
SPP: 2090-2815 psi

Drill with seawater & Hi-Vis sweeps.  
Returns to seabed 106.4m - xxx m



TVD: 458.59m Incl: 0.26°

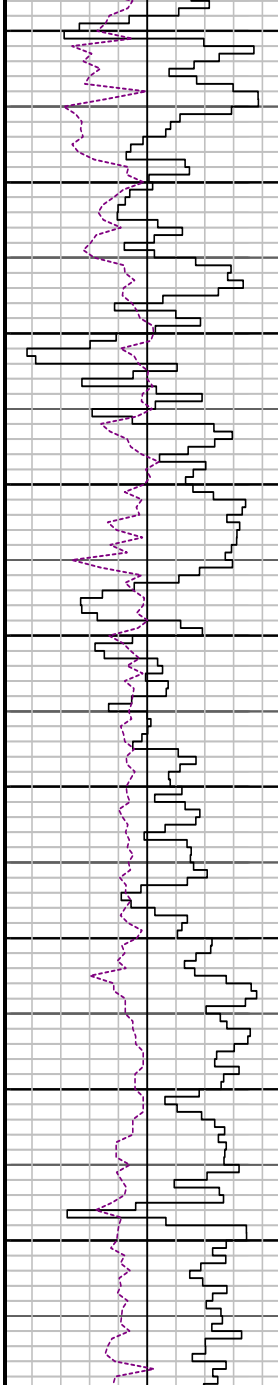
MD: 488.50m Azi: 298.03°  
TVD: 488.48m Incl: 0.55°

MD: 518.24m Azi: 302.41°  
TVD: 518.22m Incl: 0.60°

Drill with seawater & Hi-Vis sweeps.  
Returns to seabed 106.4m - xxx m

Drill with seawater & Hi-Vis sweeps  
Returns to seabed 106.4m - xxx m

WOB: 15-22 klbf  
RPM: 116-193  
GPM: 1221-1229  
SPP: 2487-3084psi



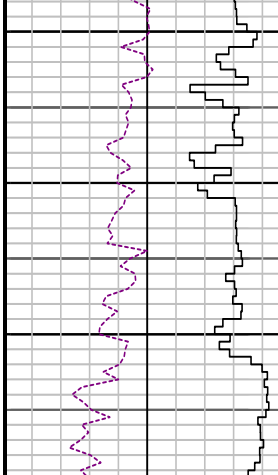
MD: 607.51m Azi: 265.06°  
TVD: 607.48m Incl: 0.34°

MD: 634.48m Azi: 227.13°  
TVD: 634.45m Incl: 0.12°

MD: 698.14m Azi: 181.9°  
TVD: 698.11m Incl: 0.30°

MD: 725.93m Azi: 188.82°  
TVD: 725.90m Incl: 1.97°

WOB: 15-25 klbf  
RPM: 113-185  
GPM: 1112-1228  
SPP: 2226-2894psi



Drill with seawater & Hi-Vis sweeps.  
Returns to seabed 106.4m - xxx m

