

# Schlumberger

## VISION Resistivity

### 1:500 Measured Depth

### Real Time Data

**Company:** ROC Oil

**Well:** Basker-7

**Field:** Gippsland Basin

**Rig Name:** Ocean Patriot

**State:** Victoria

**Country:** AUSTRALIA

**Latitude:** 38° 17' 58.78" S

**Longitude:** 148° 42' 22.31" E

**Block:**

**FL:** VIC/L26

**FL1:**

**FL2:**

**Custom:** 09ASQ0007

**Rig Name:** Ocean Patriot

**Rig Type:** Semi-Submersible

Log Measured From - Drill Floor: 21.5 m  
Permanent Datum - Mean Sea Level



Casing Flange: 152.7 m

Ground Level: 154.2 m

**Acquisition Dates:** 23 Jul 09 to 03 Aug 09

**Print Interval:** 2910.0(m) to 3920.9(m)

**Index Types:** Measured Depth

**Index Scales:** 1:500

**Depth Source:** Driller's Depth

**Depth Sensor:** DES

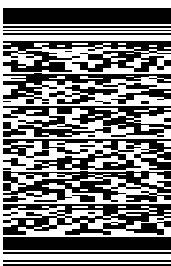
**Conveyance:** Drill Pipe

**Print Type:** Field

**Spud Date:** 21-Jul-2009

**Other Services:**

Directional Surveys



## Disclaimer

THE USE OF AND RELIANCE UPON THIS RECORDED-DATA BY THE HEREIN NAMED COMPANY (AND ANY OF ITS AFFILIATES, PARTNERS, REPRESENTATIVES, AGENTS, CONSULTANTS AND EMPLOYEES) IS SUBJECT TO THE TERMS AND CONDITIONS AGREED UPON BETWEEN SCHLUMBERGER AND THE COMPANY, INCLUDING: (a) RESTRICTIONS ON USE OF THE RECORDED-DATA; (b) DISCLAIMERS AND WAIVERS OF WARRANTIES AND REPRESENTATIONS REGARDING COMPANY'S USE AND RELIANCE UPON THE RECORDED-DATA; AND (c) CUSTOMER'S FULL AND SOLE RESPONSIBILITY FOR ANY INFERENCE DRAWN OR DECISION MADE IN CONNECTION WITH THE USE OF THIS RECORDED-DATA.

## Contents

1. Header
2. Disclaimer
3. Contents
4. Well Composite VISION Resistivity Basker-7
  - 4.1 Software Version
  - 4.2 Composite Summary
  - 4.3 Log ( TVD RT RES-GR Depth )
  - 4.4 Parameter Listing
5. Tail

## Well Composite

### VISION Resistivity Basker-7

#### Software Version

<b>Acquisition System</b>		<b>Version</b>	
MaxWell		1.2.8702.0	
Application Patch		APL-SPC-DnMSuperKit-1.2.8702.1000	
<b>Computation</b>	<b>Description</b>	<b>Version</b>	
RAB6GR	RAB6 Gamma Ray Computation Package for both Real-time and Recorded Mode	1.2.8702.0	
RAB6Res	RAB6 Resistivity Computation Package for both Real-time and Recorded Mode	1.2.8702.0	
<b>Tool Elements</b>	<b>Description</b>	<b>Software Version</b>	<b>Firmware Version</b>
RBEC	Electronics Chassis Assembly for RAB6-C	1.2.8702.0	V6.2B
DRILLING_SURFACE	DRILLING_SURFACE	1.2.8702.0	

#### Composite Summary

Run Name	Pass Objective	Direction	Top	Bottom	Acquisition Start Date	Acquisition Start Time
Run 2	Drilling	Down	195.25 m	1061.77 m	23-Jul-2009	02:39:59
Run 3	Drilling	Down	1027.73 m	2918.79 m	26-Jul-2009	15:32:43
Run 4	Drilling	Down	2849.80 m	3448.79 m	31-Jul-2009	23:29:56
Run 5	Drilling	Down	3429.74 m	3537.10 m	02-Aug-2009	14:21:58
Run 6	Drilling	Down	3512.77 m		03-Aug-2009	16:53:02

All depths are referenced to toolstring zero

#### Log

Well Composite 16C7DC7B-5F2F-4B26-91CF-2E5457643CA8

Description: ARC Blended Resistivity RT Format: Log ( TVD RT RES-GR Depth ) Index Scale: 1:500 Index Unit: m Index Type: Measured Depth Creation Date: 05-Aug-2009 10:46:11

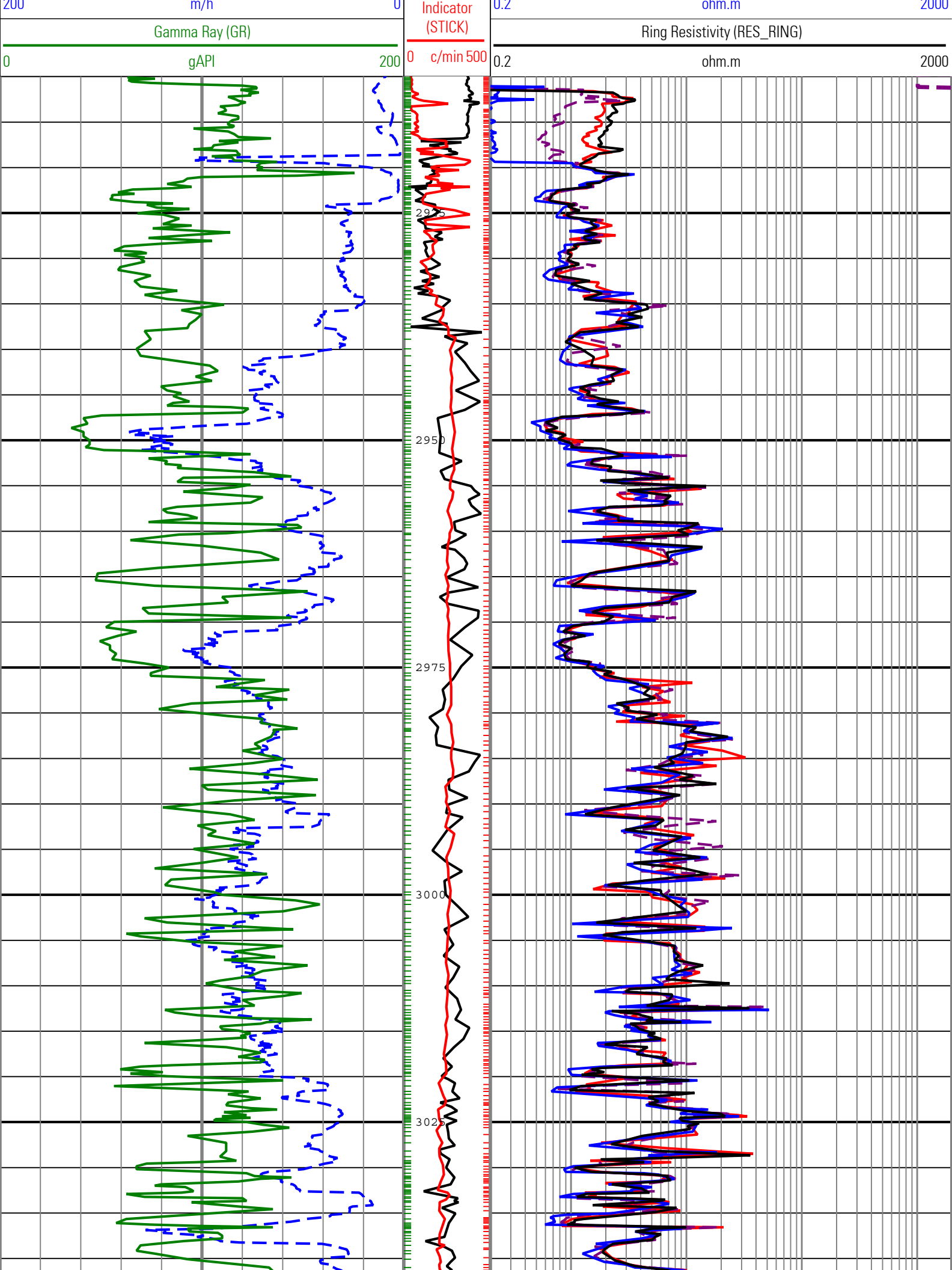
CRPM	TeleScope[1]:TeleScope[1]	6in - RT
GR	RAB[1]:RAB[1]:RBEC[1]	6in - RT
RES_BD	RAB[1]:RAB[1]:RBEC[1]	6in - RT
RES_BD_RAW	RAB[1]:RAB[1]	6in - RT
RES_BM	RAB[1]:RAB[1]:RBEC[1]	6in - RT
RES_BS	RAB[1]:RAB[1]:RBEC[1]	6in - RT
RES_RING	RAB[1]:RAB[1]:RBEC[1]	6in - RT
ROP5	DRILLING_SURFACE	6in - RT
STICK	TeleScope[1]:TeleScope[1]	6in - RT

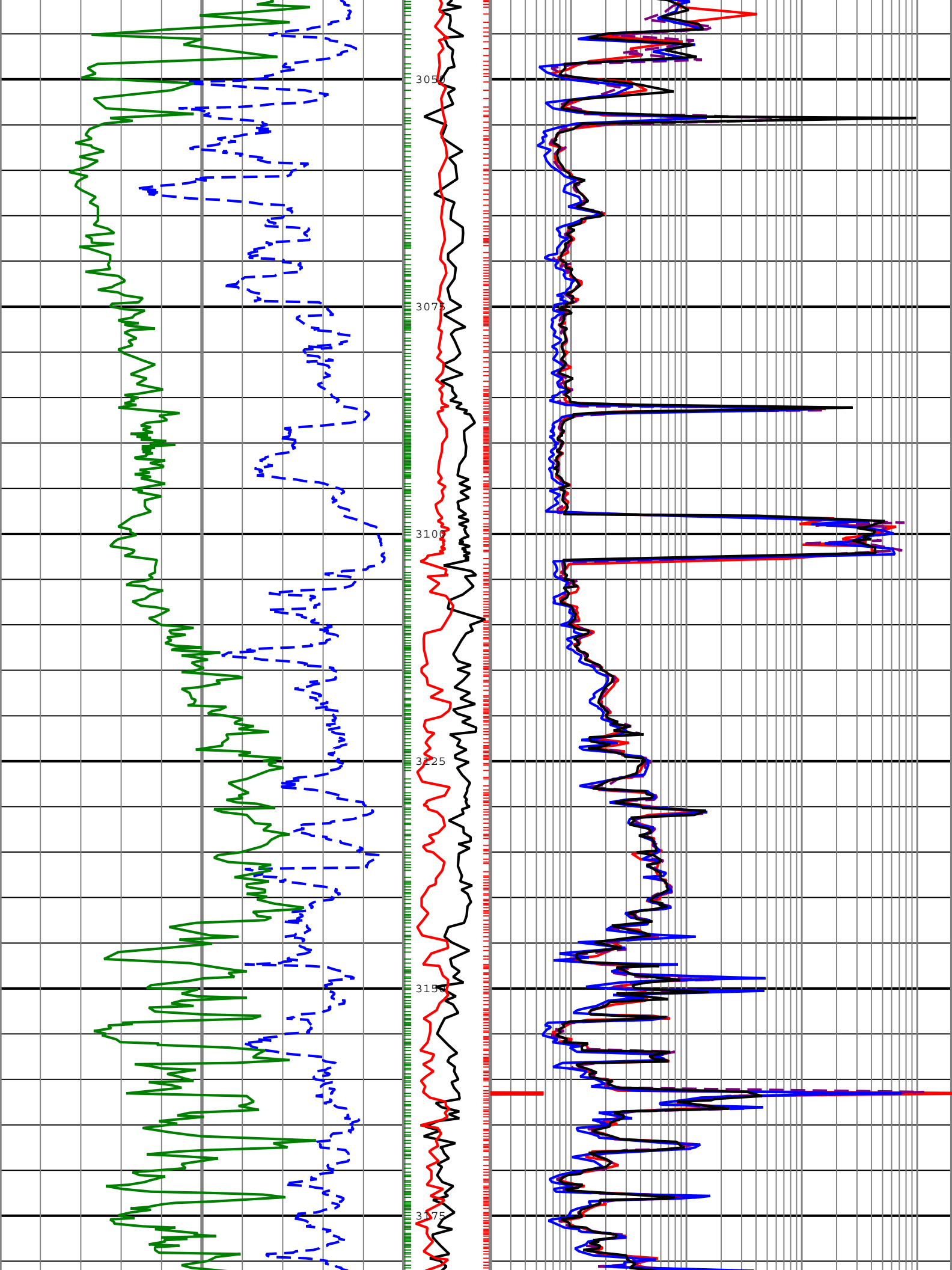
├ GR - Gamma Ray

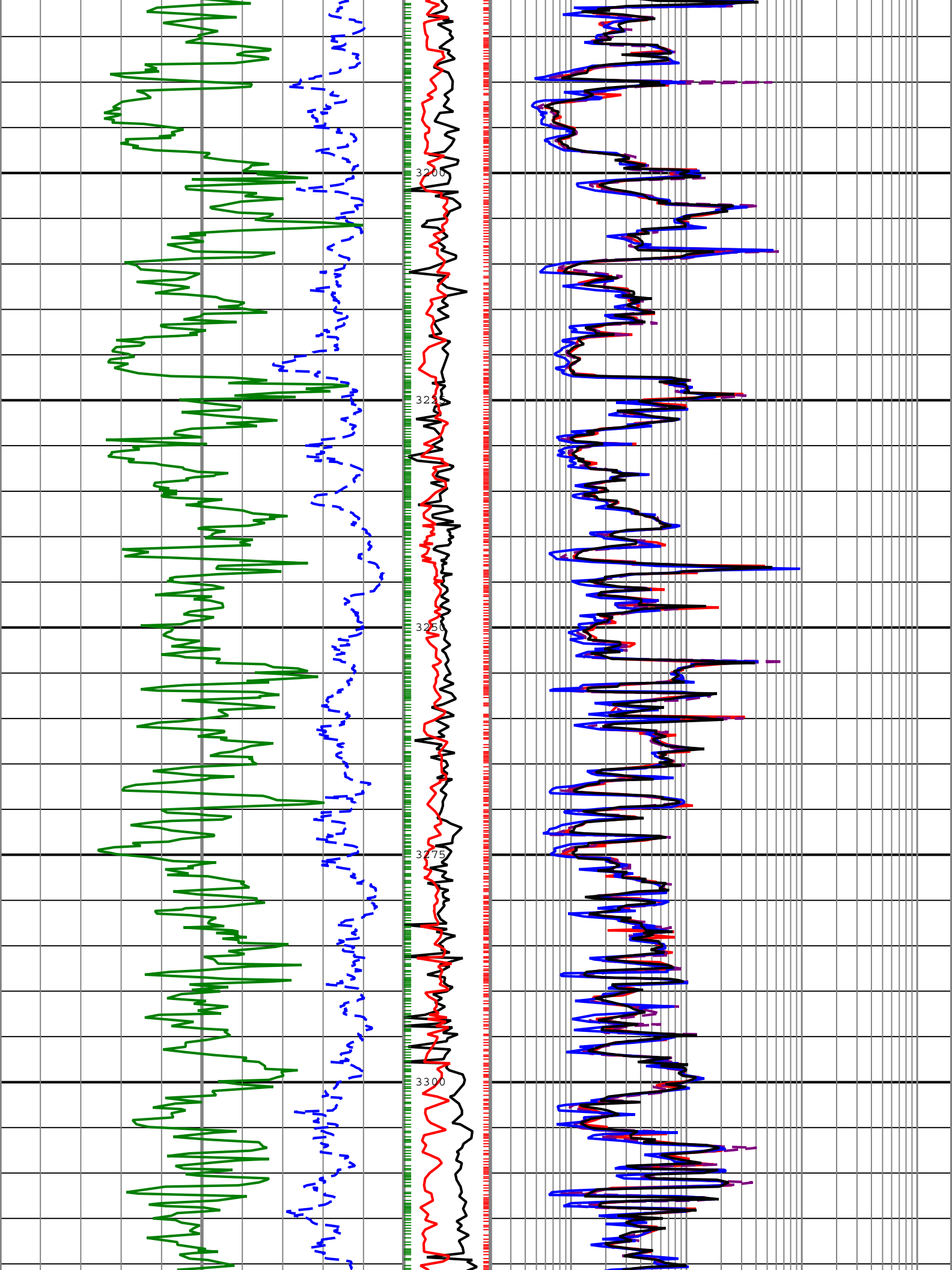
└ RES\_BD\_RAW - Raw Deep Button Resistivity

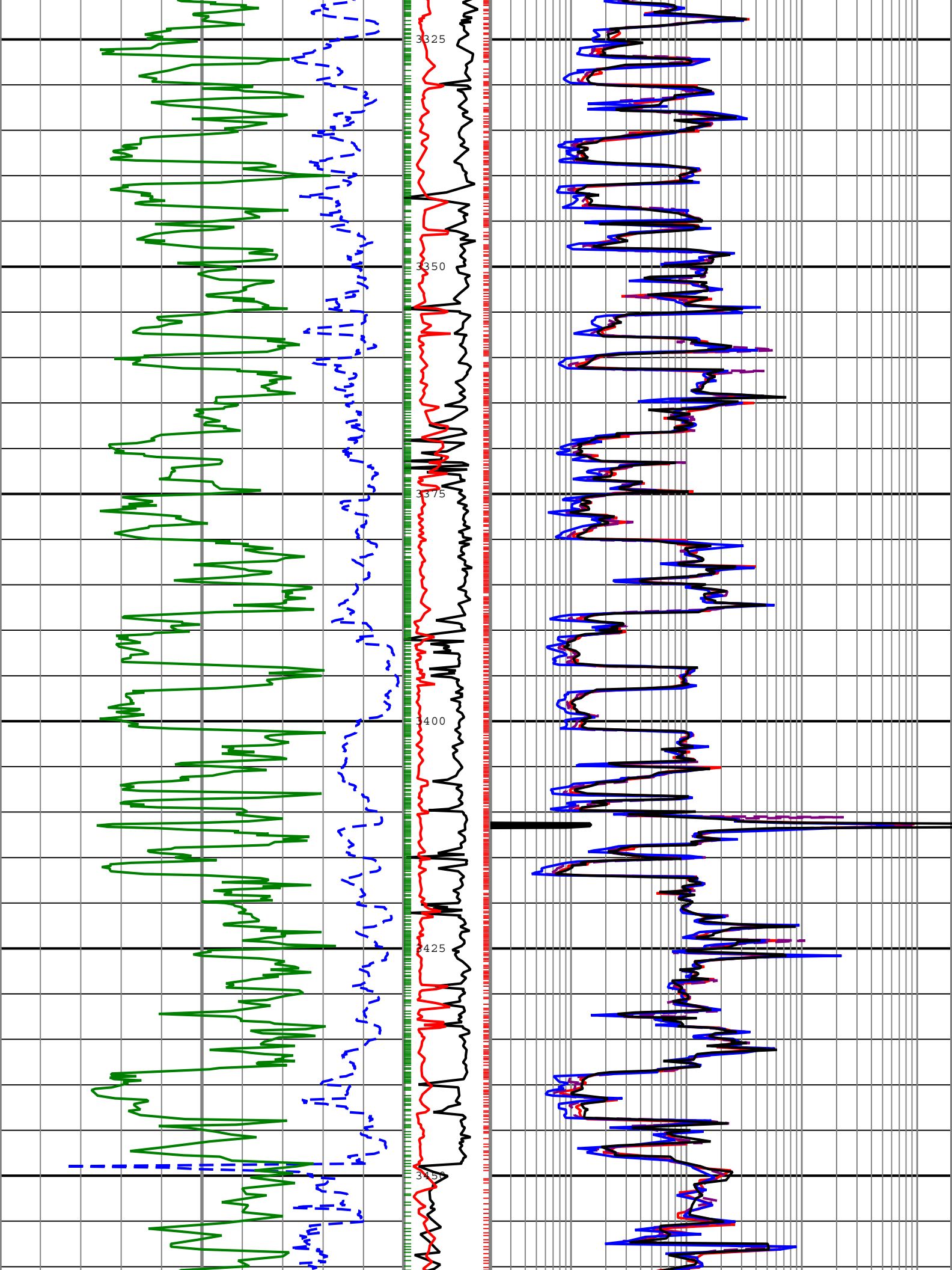
Collar Rotational Speed (CRPM)	Deep Button Resistivity (RES_BD)	Medium Button Resistivity (RES_BM)	Shallow Button Resistivity (RES_BS)
0.2	ohm.m 2000		
0.2		ohm.m 2000	
0			ohm.m 2000
Stick Slip			

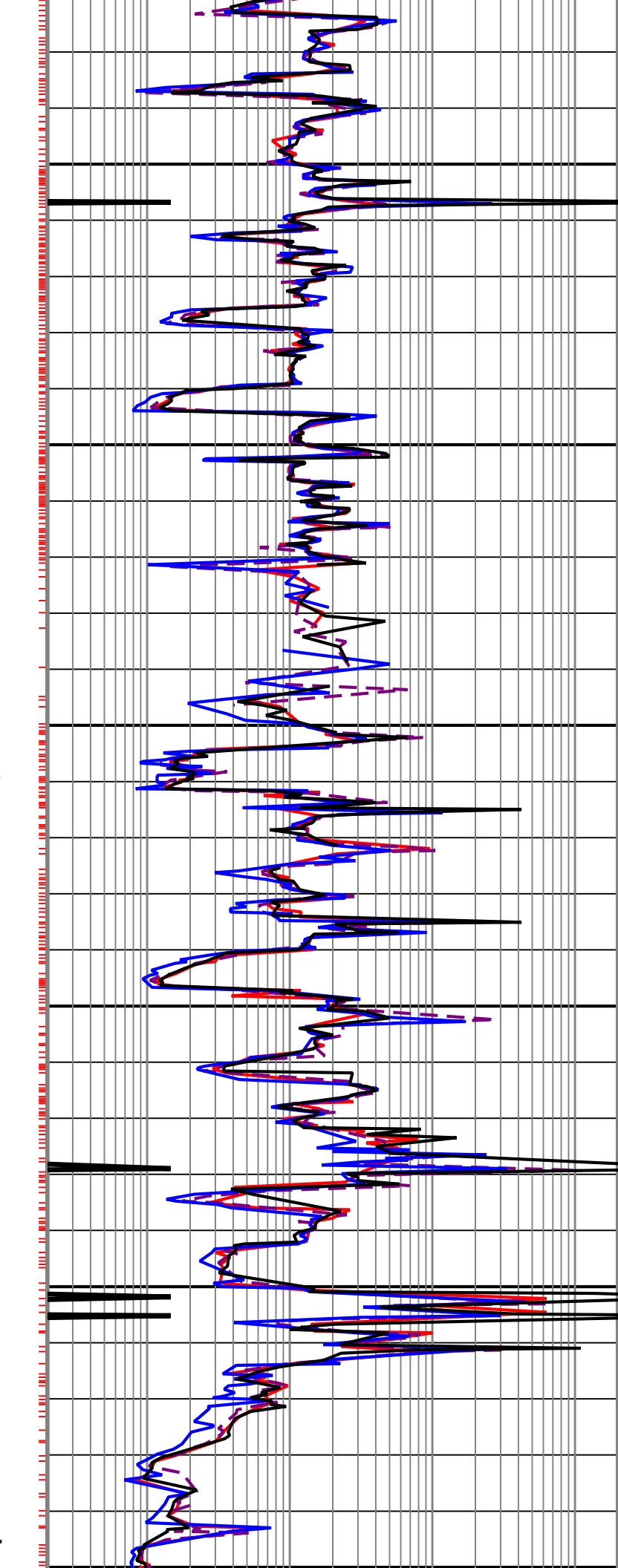
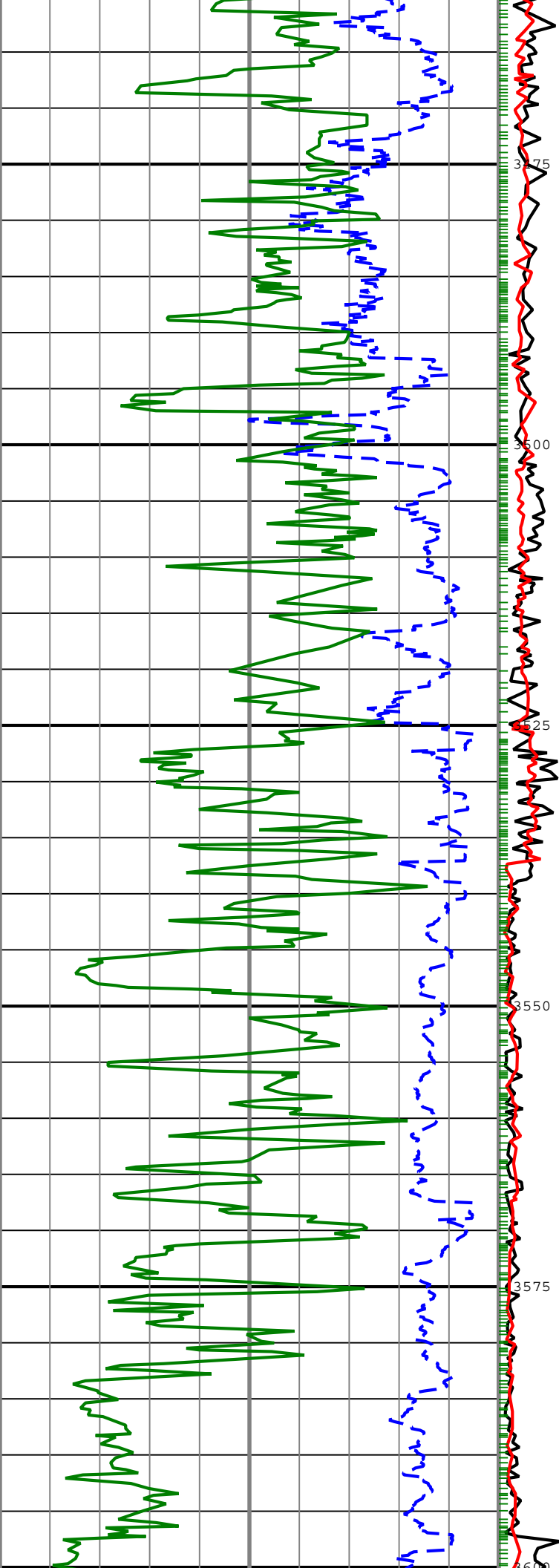
Rate of penetration averaged over the last 5 ft (1.5 m) (ROP5)

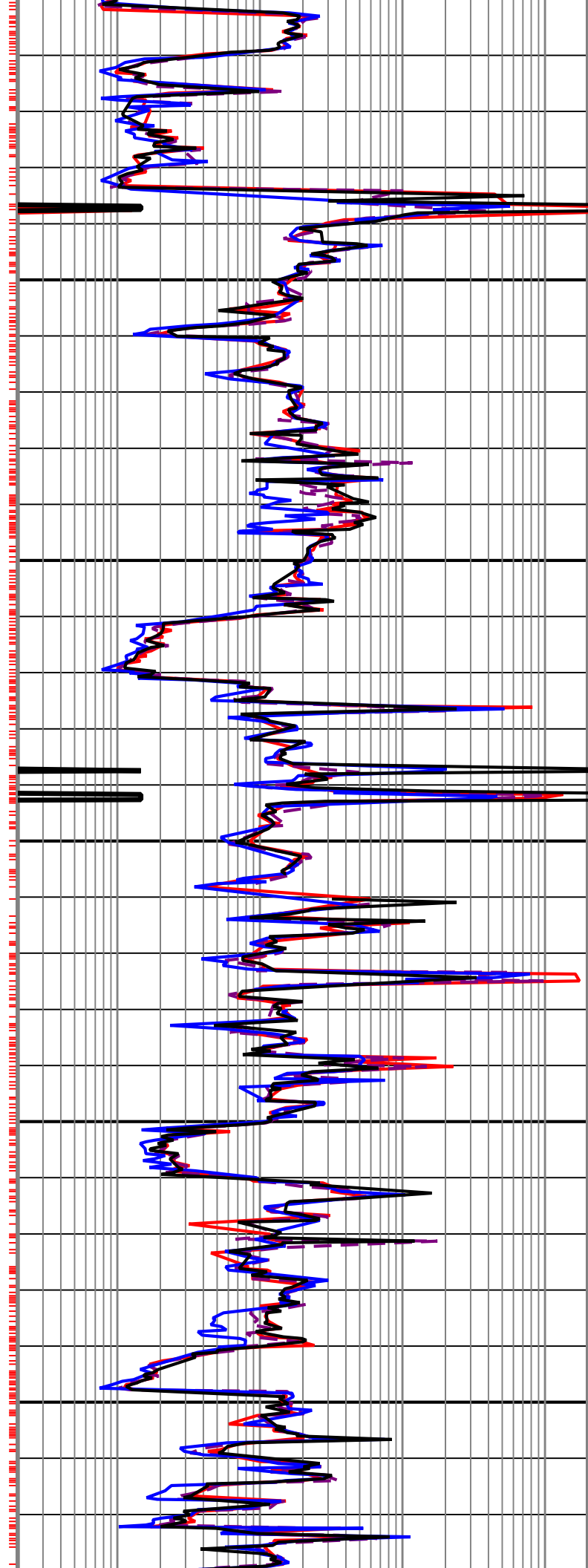
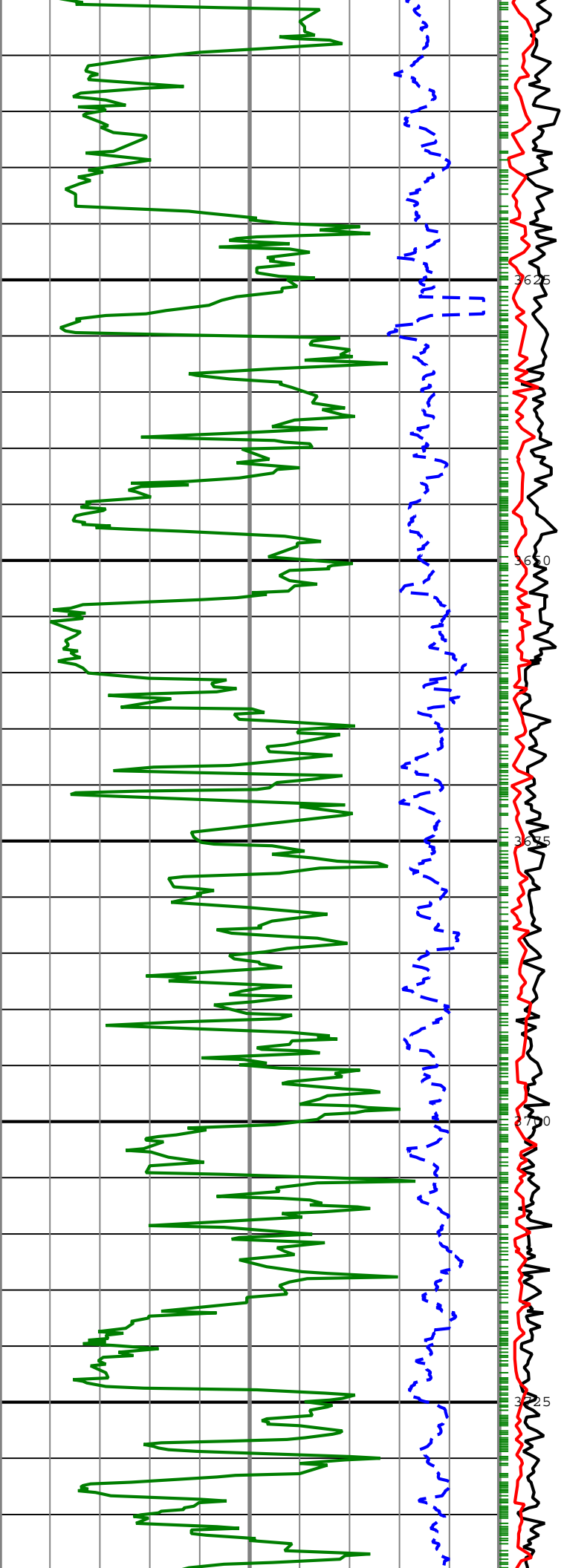




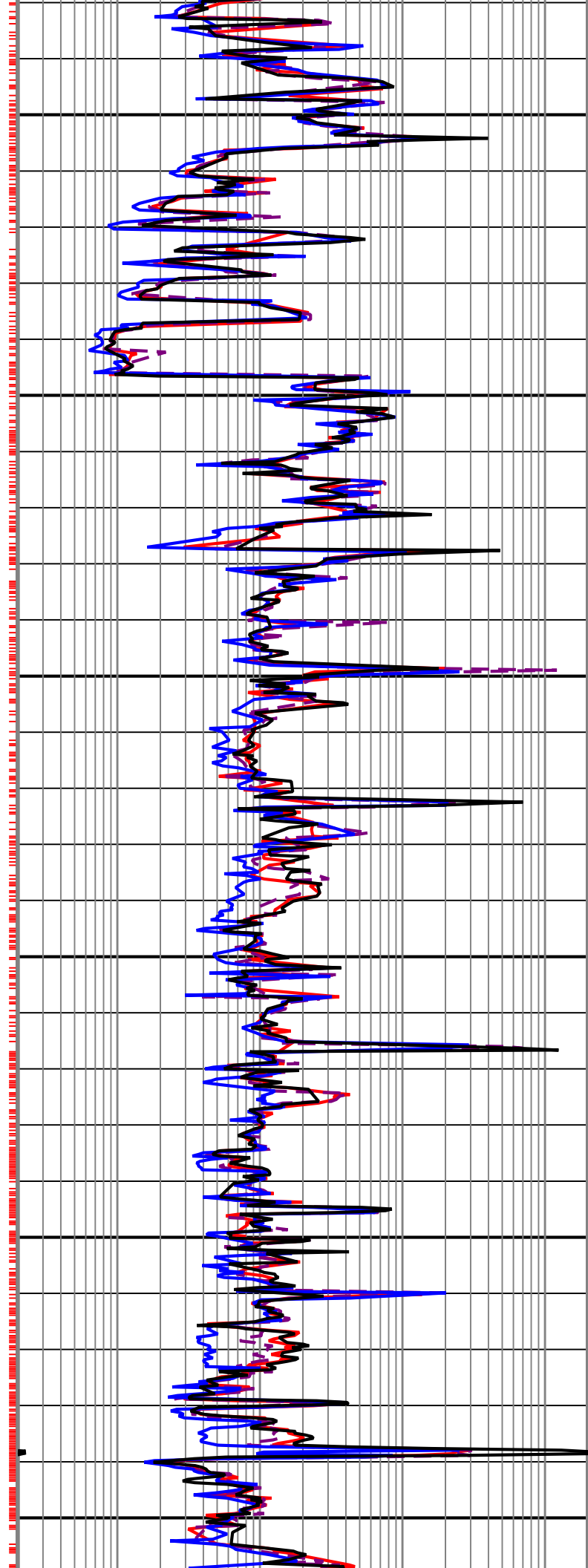
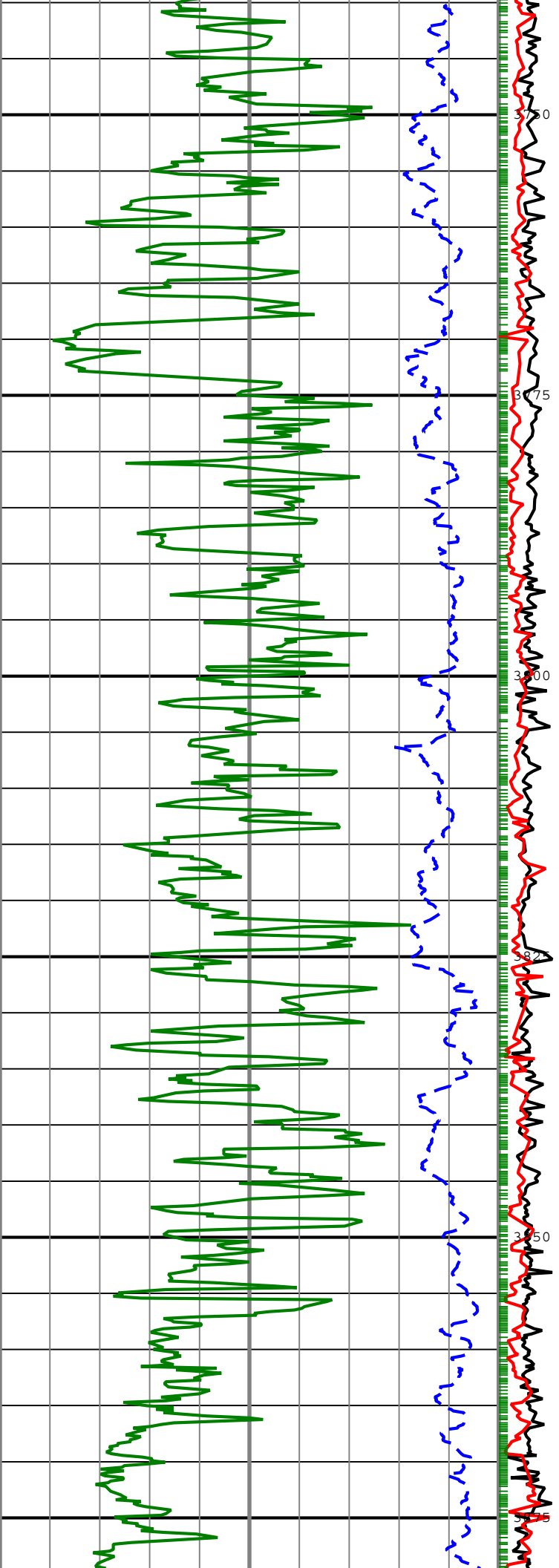


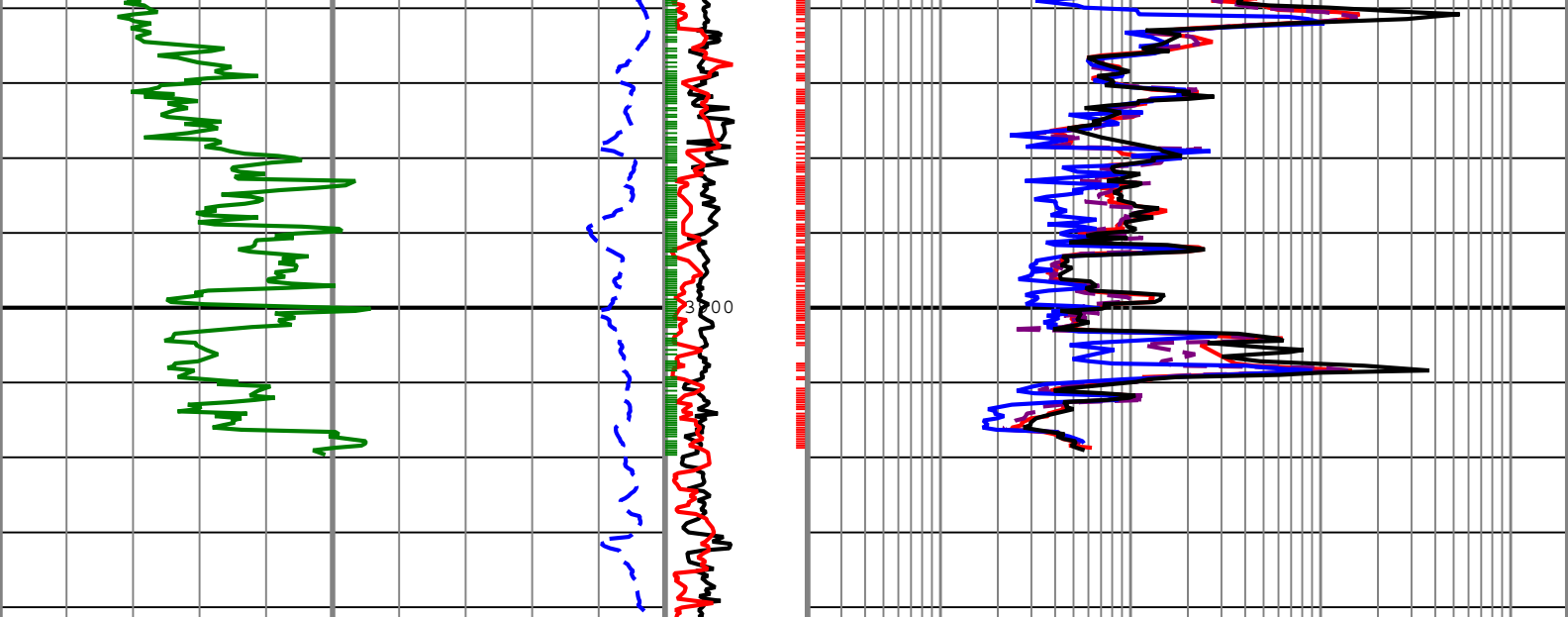












Rate of penetration averaged over the last 5 ft (1.5 m) (ROP5)	Collar Rotational Speed (CRPM)	Deep Button Resistivity (RES_BD)
200 m/h	0 c/min 250	0.2 ohm.m 2000
Gamma Ray (GR)	Stick Slip Indicator (STICK)	Medium Button Resistivity (RES_BM)
0 gAPI 200	0 c/min 500	0.2 ohm.m 2000
		Shallow Button Resistivity (RES_BS)
		0.2 ohm.m 2000
		Ring Resistivity (RES_RING)
		0.2 ohm.m 2000

RES\_BD\_RAW - Raw Deep Button Resistivity  
 GR - Gamma Ray

Description: ARC Blended Resistivity RT Format: Log ( TVD RT RES-GR Depth ) Index Scale: 1:500 Index Unit: m Index Type: Measured Depth Creation Date: 05-Aug-2009 10:46:11

## Channel Processing Parameters

### Run 4: Parameters

Parameter	Description	ToolPath	Value	Unit
BHT	Bottom Hole Temperature	Borehole	76	degC
BS	Bit Size	COMPLETION	Depth Zoned	in
DFD	Drilling Fluid Density	Borehole	Time Zoned	lbm/gal
DFT	Drilling Fluid Type	Borehole	Water	
GGRD	Geothermal Gradient	Borehole	18.23	degC/km
GRSE	Generalized Mud Resistivity Selection	Borehole	Computed (GEN-9)	
GTSE	Generalized Temperature Selection	Borehole	Gradient From Surface	
MST	Mud Sample Temperature	Borehole	21	degC
RMS	Resistivity of Mud Sample	Borehole	0.099	ohm.m
SHT	Surface Hole Temperature	Borehole	20	degC
TD	Total Measured Depth	Borehole	3448	m

### Run 4 : Depth Zoned Parameters

Parameter	Value	Start ( m )	Stop ( m )
BS	12.25	2910	2918.8
BS	8.5	2918.8	3448.79

All depth are actual.

### Run 4 : Time Zoned Parameters

## Pass Drilling

Parameter	Value	Start Time	Stop Time	Start Depth ( m )	Stop Depth ( m )
DFD	9.55	31-Jul-2009 23:29:56	01-Aug-2009 09:24:36	2918.93	3048.74
DFD	9.68	01-Aug-2009 09:24:36	02-Aug-2009 02:51:38	3048.74	3403.55
DFD	9.4	02-Aug-2009 02:51:38	02-Aug-2009 10:31:50	3403.55	3448.79

All depth are at tool zero.

## Run 5: Parameters

Parameter	Description	ToolPath	Value	Unit
BHT	Bottom Hole Temperature	Borehole	77	degC
BS	Bit Size	COMPLETION	8.5	in
DFD	Drilling Fluid Density	Borehole	9.4	lbm/gal
DFT	Drilling Fluid Type	Borehole	Water	
GGRD	Geothermal Gradient	Borehole	18.23	degC/km
GRSE	Generalized Mud Resistivity Selection	Borehole	Computed (GEN-9)	
GTSE	Generalized Temperature Selection	Borehole	Gradient From Surface	
MST	Mud Sample Temperature	Borehole	21	degC
RMS	Resistivity of Mud Sample	Borehole	0.099	ohm.m
SHT	Surface Hole Temperature	Borehole	20	degC
TD	Total Measured Depth	Borehole	3537	m

## Run 6: Parameters

Parameter	Description	ToolPath	Value	Unit
BHT	Bottom Hole Temperature	Borehole	77	degC
BS	Bit Size	COMPLETION	8.5	in
DFD	Drilling Fluid Density	Borehole	9.51	lbm/gal
DFT	Drilling Fluid Type	Borehole	Water	
GGRD	Geothermal Gradient	Borehole	18.23	degC/km
GRSE	Generalized Mud Resistivity Selection	Borehole	Computed (GEN-9)	
GTSE	Generalized Temperature Selection	Borehole	Gradient From Surface	
MST	Mud Sample Temperature	Borehole	21	degC
RMS	Resistivity of Mud Sample	Borehole	0.106	ohm.m
SHT	Surface Hole Temperature	Borehole	20	degC
TD	Total Measured Depth	Borehole	3950	m

## Tool Control Parameters

### Run 2: Parameters

Parameter	Description	ToolPath	Value	Unit
OFFBTM_TH	Threshold for deciding whether the bit is off bottom	DnMWorkflow	Time Zoned	m

### Run 2 : Time Zoned Parameters

## Pass Drilling

Parameter	Value	Start Time	Stop Time	Start Depth ( m )	Stop Depth ( m )
OFFBTM_TH	0.5	23-Jul-2009 02:39:59	23-Jul-2009 10:30:46	195.25	453.87
OFFBTM_TH	0	23-Jul-2009 10:30:46	23-Jul-2009 11:29:38	453.87	471.75
OFFBTM_TH	0.5	23-Jul-2009 11:29:38	24-Jul-2009 12:38:55	471.75	1061.77

All depth are at tool zero.

### Run 3: Parameters

Parameter	Description	ToolPath	Value	Unit
OFFBTM_TH	Threshold for deciding whether the bit is off bottom	DnMWorkflow	0.55	m

Run 4: Parameters				
Parameter	Description	ToolPath	Value	Unit
OFFBTM_TH	Threshold for deciding whether the bit is off bottom	DnMWorkflow	0.55	m

Run 5: Parameters				
Parameter	Description	ToolPath	Value	Unit
OFFBTM_TH	Threshold for deciding whether the bit is off bottom	DnMWorkflow	Time Zoned	m

### Run 5 : Time Zoned Parameters

Pass Drilling					
Parameter	Value	Start Time	Stop Time	Start Depth ( m )	Stop Depth ( m )
OFFBTM_TH	0.55	02-Aug-2009 14:21:58	03-Aug-2009 11:05:00	3448.95	3524.71
OFFBTM_TH	0.6	03-Aug-2009 11:05:00	03-Aug-2009 14:34:38	3524.71	3537.1

All depth are at tool zero.

Run 6: Parameters				
Parameter	Description	ToolPath	Value	Unit
OFFBTM_TH	Threshold for deciding whether the bit is off bottom	DnMWorkflow	0.6	m

**Company:** ROC Oil

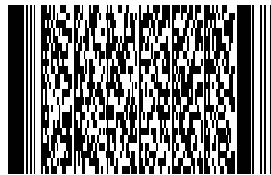
**Well:** Basker-7

**Field:** Gippsland Basin

**Rig Name:** Ocean Patriot

**State:** Victoria

**Country:** AUSTRALIA



<b>Schlumberger</b>	<b>VISION Resistivity</b>
	<b>1:500 Measured Depth</b>
	<b>Real Time Data</b>