



Company : ROC Oil

Well : Basker-7

Interval : 153.00 - 1257.29 meters

Created : 27/Jul/2009 6:56:16 AM



INTEQ

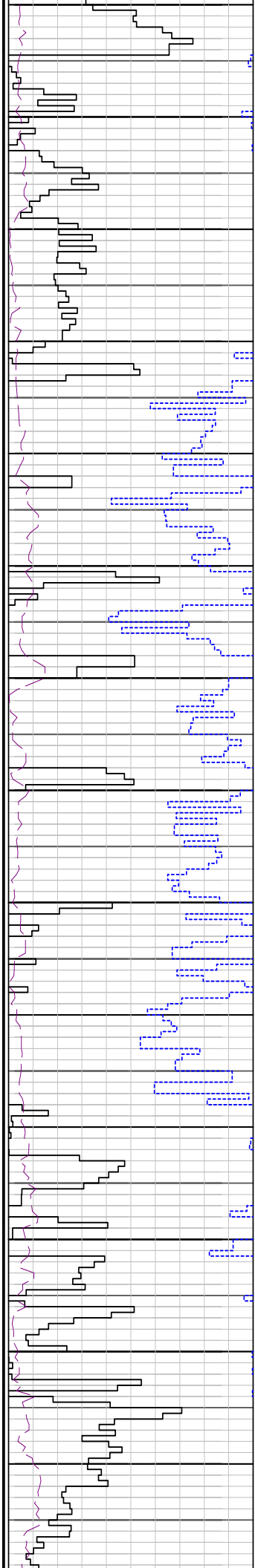
FORMATION EVALUATION LOG

ROP (m/hr)	CORE	MD meters	CUTTINGS LITHOLOGY	INTERPRETED LITHOLOGY	TOTAL GAS ppm		CHROMATOGRAPH					FLUORESCENCE	CALCIOMETRY	LITHOLOGY / REMARKS
					100 1000 10000 100000		Methane ppm							
					Resistivity (Deep)	ohmm	Resistivity (Shallow)	ohmm	Ethane ppm	Propane ppm	iso-Butane ppm			
100 50 ROP BACKUP (m/hr) 300 200 WEIGHT ON BIT (klbf) 30 60 Gamma Ray 0 200 API		150			0.2 2000	0.2 2000	100 1000 10000 100000							
		160												All depth measurements in meters referenced from Rotary Table (RT) RT-AHD = 21.5m Water depth = 154.2mMDRT RT-Seabed = 175.7mMDRT
		170												Basker-7 spudded at 03:00hrs on 22 July 2009
		180												MD: 175.70m Inc: 0.00° Azi: 150.85° TVD: 175.70m
		190												Drill with seawater and hi-vis sweeps. Returns to Seabed.
		200												Set 762mm (30") x 508mm (20") casing shoe at 209.0mMDRT
		210												
		220												MD: 226.76m Inc: 0.00° Azi: 128.45° TVD: 226.76m
		230												
		240												
		2												

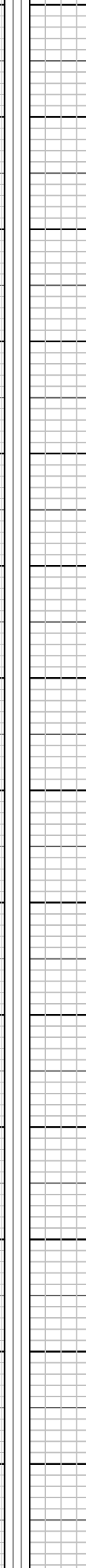
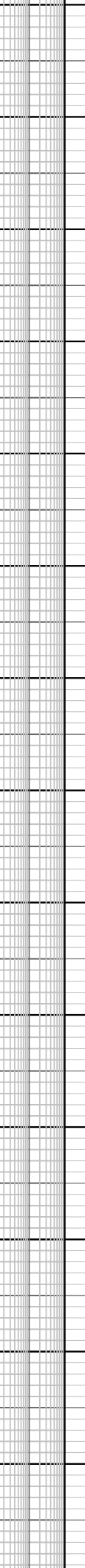
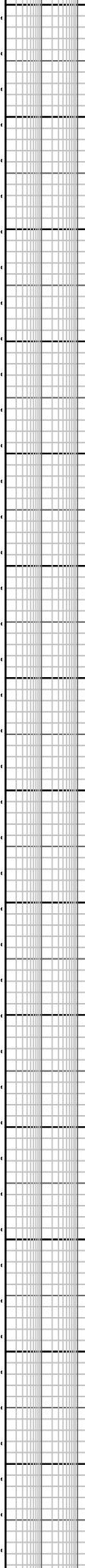
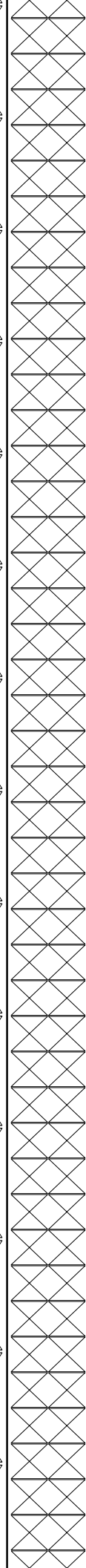
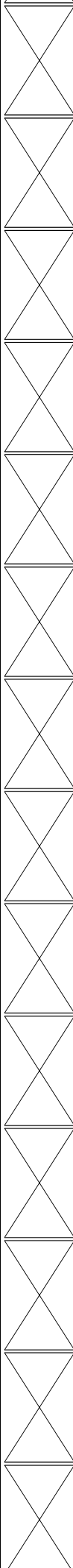
NB1 Reed-Y11C
660mm(26")
Jets: 3x22, 1x16
Depth In: 175.7m
Depth Out: 210.7m
Drilled: 35.0m in 0.5hrs
Grade: T-1

22 July 2009
23 July 2009

NB2 Smith XFL-VCPS
406mm(16")
Jets: 3x22, 1x15
Depth In: 210.7m
Depth Out: 1061.7m
Drilled: 851.0m in 13.9hrs
Grade: T-1-IN



250
260
270
280
290
300
310
320
330
340
350
360
370
380



Drill with seawater and hi-vis sweeps. Returns to Seabed.

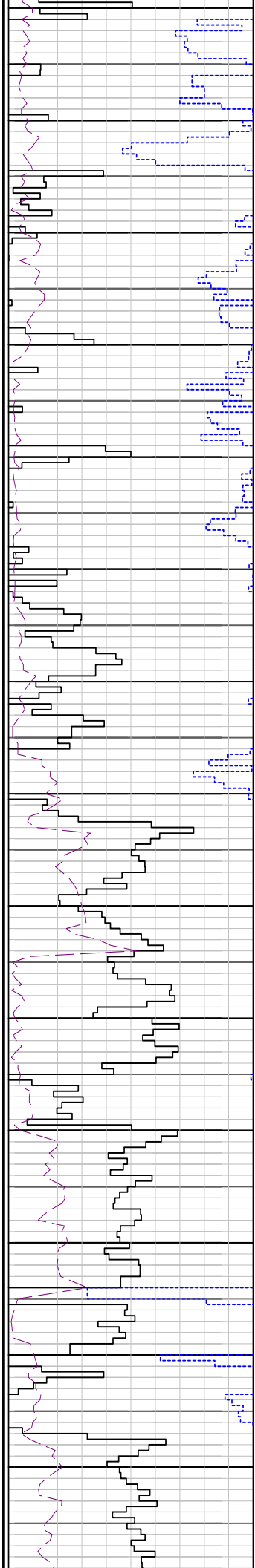
MD: 255.43m Inc: 0.36°
Azi: 74.37° TVD: 255.43m

MD: 284.01m Inc: 0.78°
Azi: 284.01° TVD: 284.01m

MD: 312.87m Inc: 1.11°
Azi: 151.68° TVD: 312.86m

MD: 342.04m Inc: 1.83°
Azi: 152.30° TVD: 342.02m

MD: 370.47m Inc: 3.26°
Azi: 148.51° TVD: 370.43m



390
400
410
420
430
440
450
460
470
480
490
500
510
520

Drill with seawater and hi-vis sweeps. Returns to Seabed.

MD: 399.01m Inc: 4.39°
Azi: 145.48° TVD: 398.91m

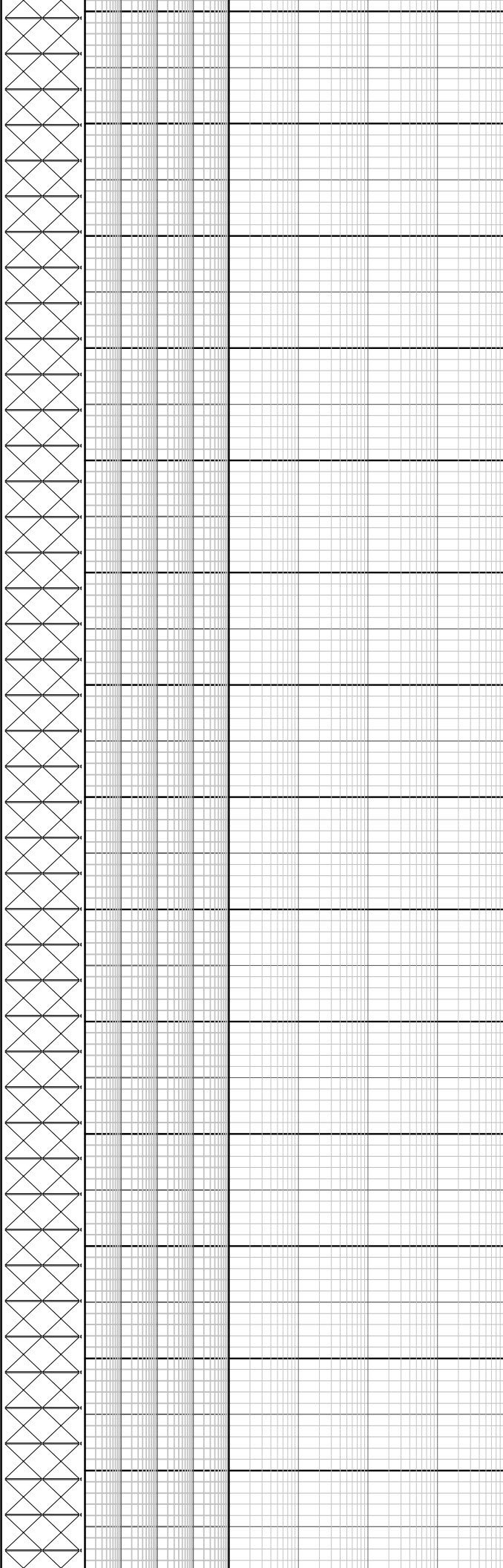
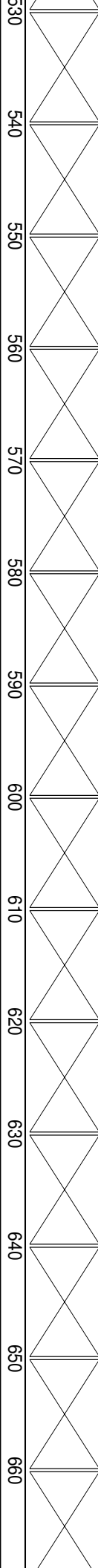
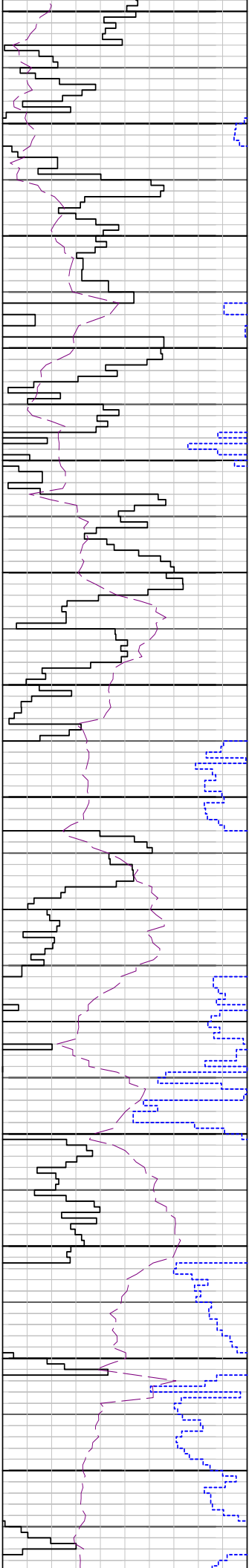
MD: 426.67m Inc: 6.45°
Azi: 150.06° TVD: 426.44m

MD: 455.70m Inc: 8.55°
Azi: 155.30° TVD: 455.22m

MD: 484.37m Inc: 10.63°
Azi: 155.06° TVD: 483.49m

Drill with seawater and hi-vis sweeps. Returns to Seabed.

MD: 513.87m Inc: 12.47°
Azi: 153.23° TVD: 512.39m



**MD: 542.49m Inc: 15.01°
Azi: 150.63° TVD: 540.19m**

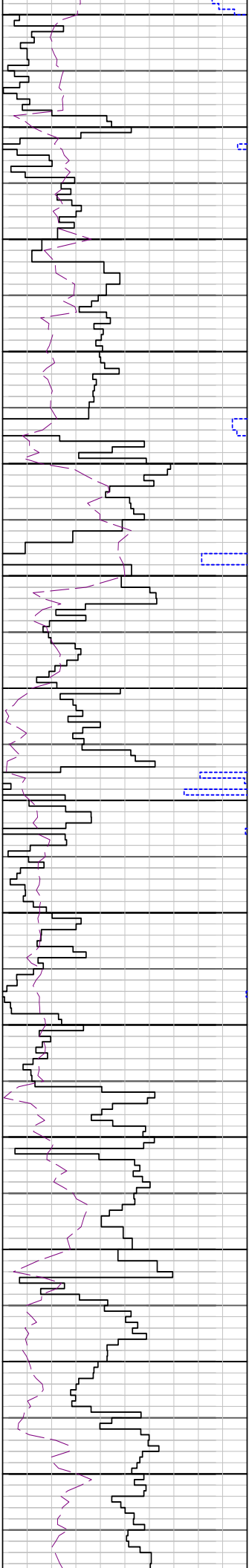
**MD: 572.14m Inc: 17.86°
Azi: 149.10° TVD: 568.62m**

**Drill with seawater and hi-vis
sweeps. Returns to Seabed.**

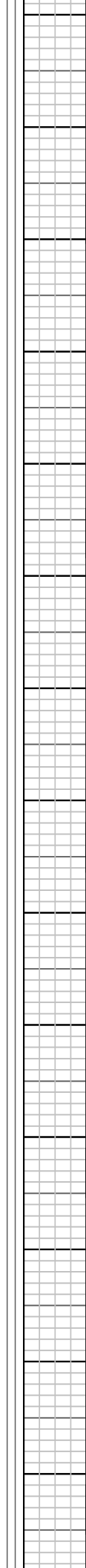
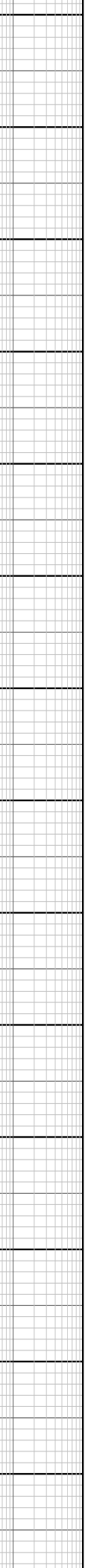
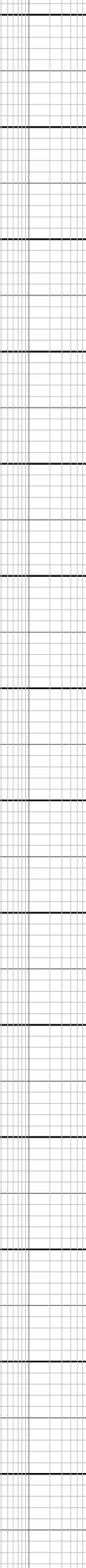
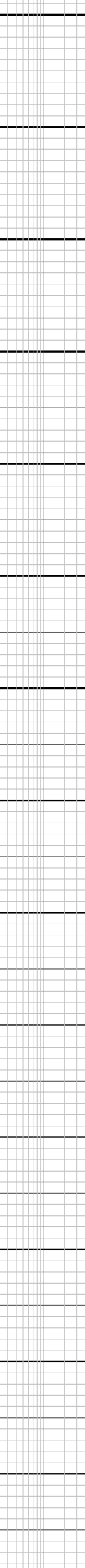
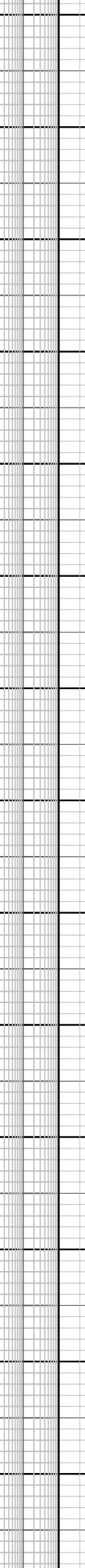
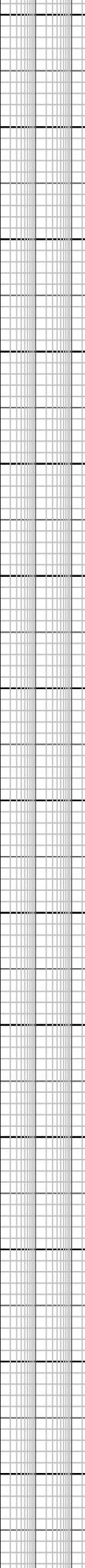
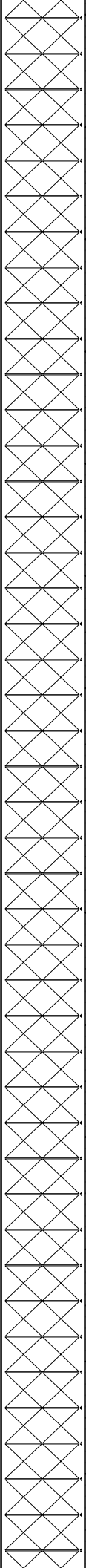
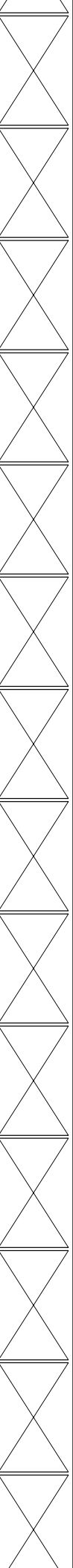
**MD: 601.14m Inc: 20.61°
Azi: 150.86° TVD: 596.00m**

**MD: 629.94m Inc: 23.75°
Azi: 150.85° TVD: 622.67m**

**MD: 657.35m Inc: 27.63°
Azi: 152.02° TVD: 647.36m**



670
680
690
700
710
720
730
740
750
760
770
780
790
800



MD: 686.15m Inc: 28.92°
Azi: 155.03° TVD: 672.72m

Drill with seawater and hi-vis sweeps. Returns to Seabed.

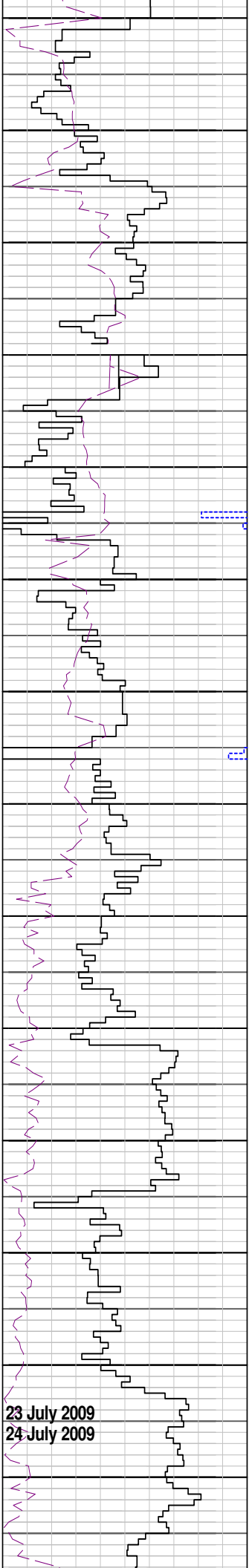
MD: 714.52m Inc: 30.23°
Azi: 156.28° TVD: 697.40m

MD: 742.58m Inc: 31.04°
Azi: 156.67° TVD: 721.54m

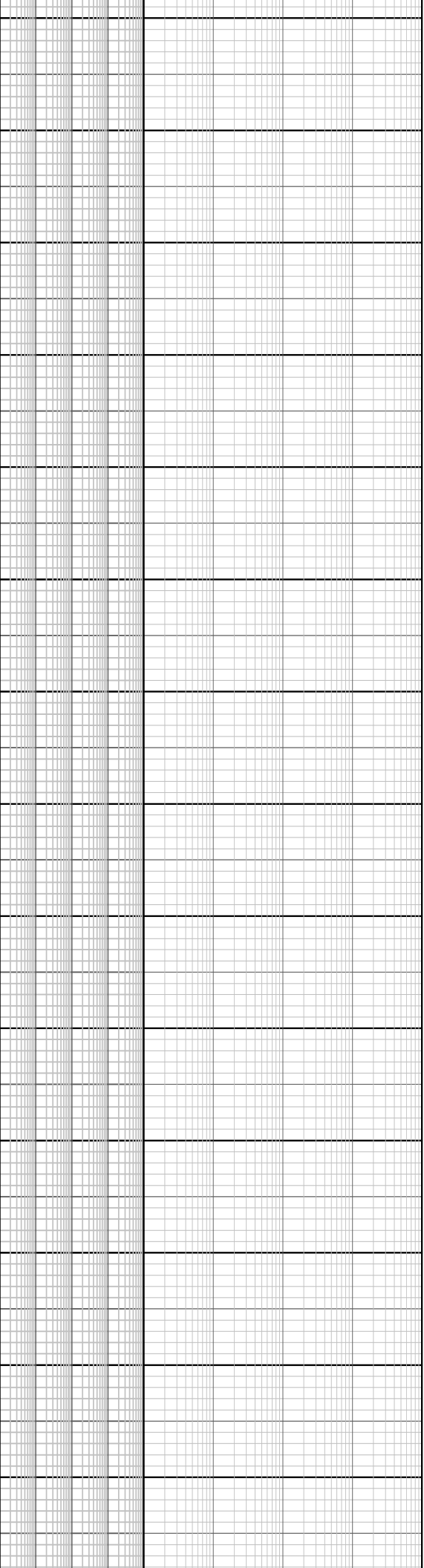
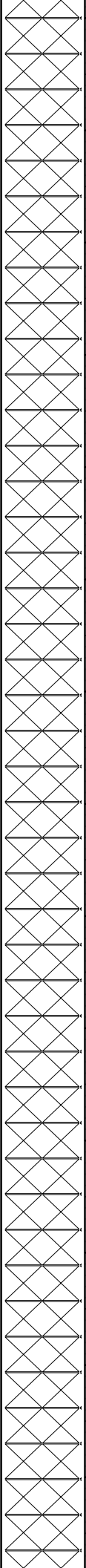
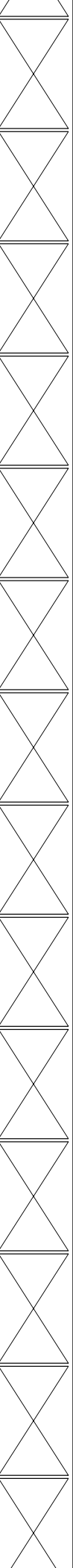
MD: 771.54m Inc: 32.48°
Azi: 157.40° TVD: 746.17m

Drill with seawater and hi-vis sweeps. Returns to Seabed.

MD: 799.88m Inc: 33.24°
Azi: 154.47° TVD: 769.98m



810
820
830
840
850
860
870
880
890
900
910
920
930
940



MD: 828.16m Inc: 34.09°
Azi: 149.77° TVD: 793.52m

MD: 856.81m Inc: 34.64°
Azi: 148.27° TVD: 817.16m

MD: 887.28m Inc: 36.54°
Azi: 149.29° TVD: 841.94m

Drill with seawater and hi-vis sweeps. Returns to Seabed.

MD: 916.73m Inc: 36.73°
Azi: 149.63° TVD: 865.58m

MD: 945.11m Inc: 36.90°
Azi: 150.11° TVD: 888.28m

23 July 2009
24 July 2009

MD: 974.40m Inc: 38.19°
Azi: 152.01° TVD: 911.49m

Drill with seawater and hi-vis sweeps. Returns to Seabed.

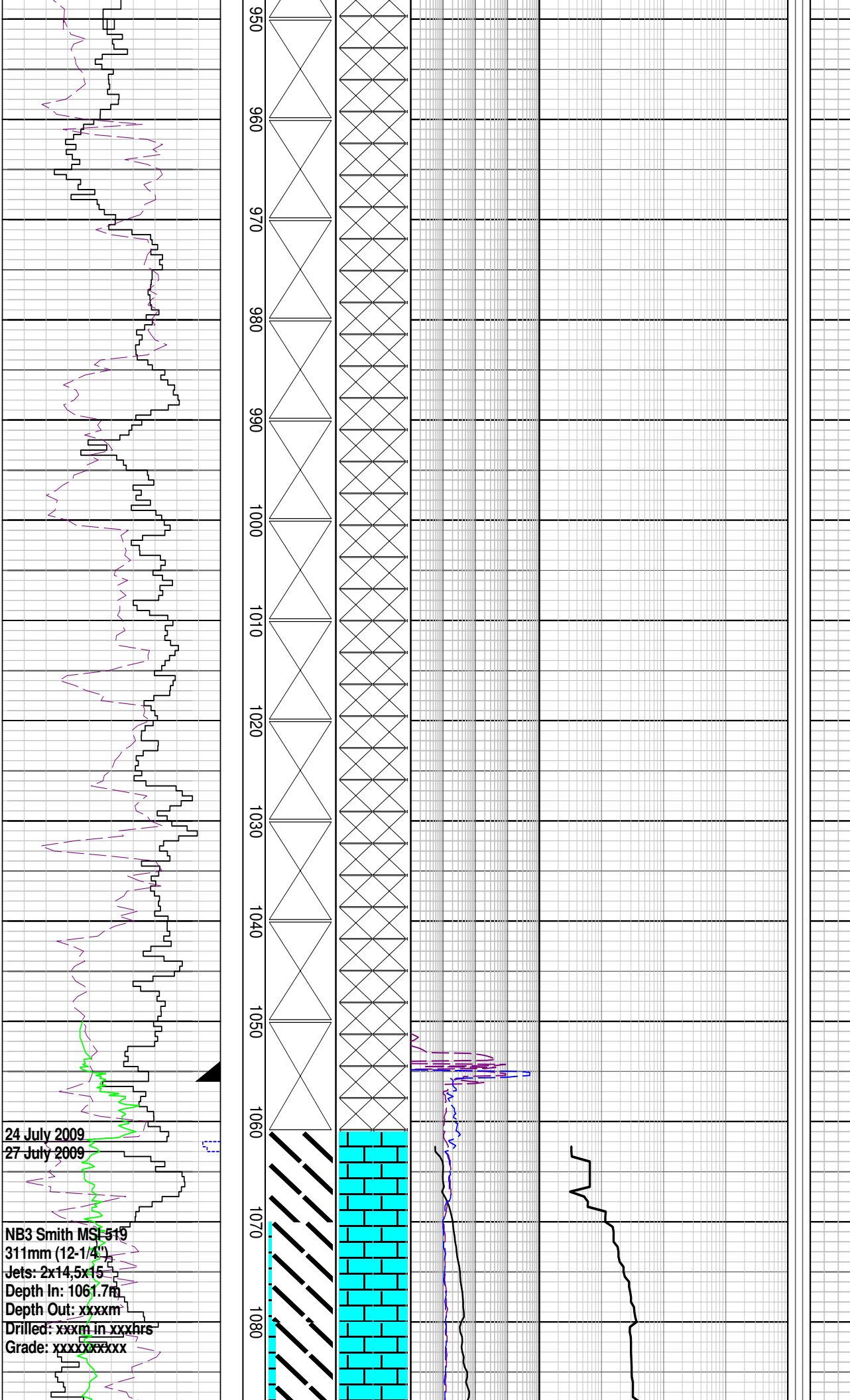
MD: 1003.53m Inc: 37.48°
Azi: 150.94° TVD: 934.50m

MD: 1032.80m Inc: 36.51°
Azi: 151.41° TVD: 957.88m

Set 340mm (13-3/8") casing shoe at 1056.6mMDRT

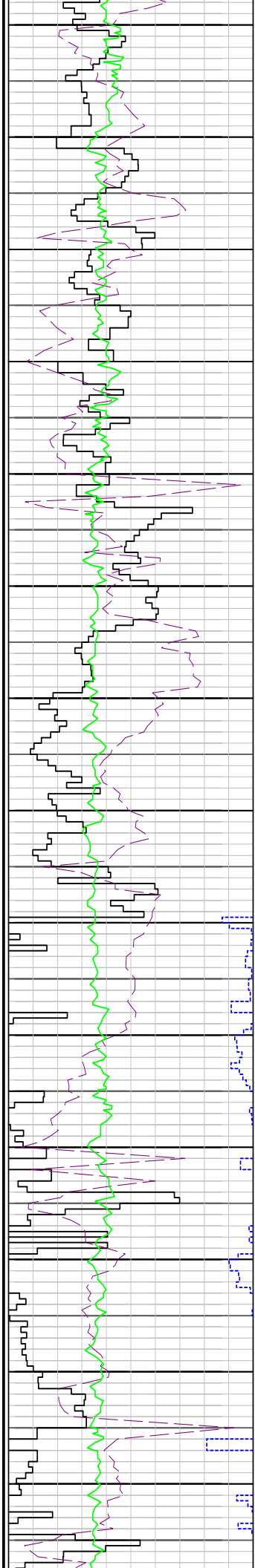
MD: 1060.99m Inc: 36.98°
Azi: 151.69° TVD: 984.29m

MARL: dom olv gy, com m lt gry-m gry, sft frm, occ mod hd, sbbky-blky, abd calc cly, tr carb mat, tr v f sd

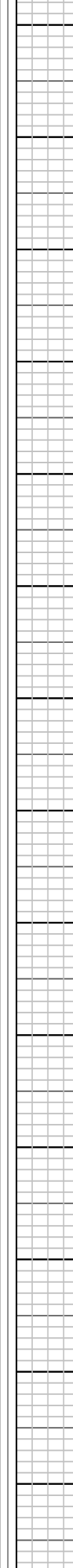
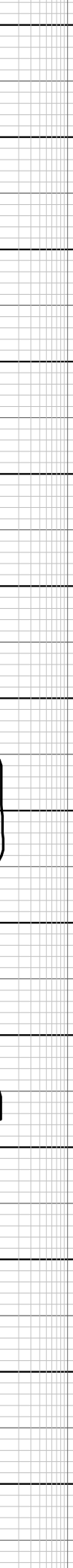
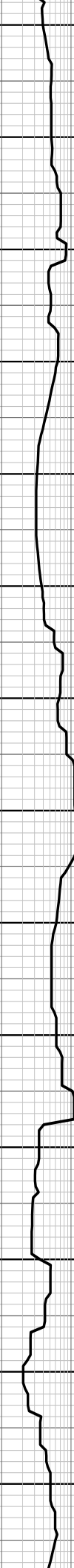
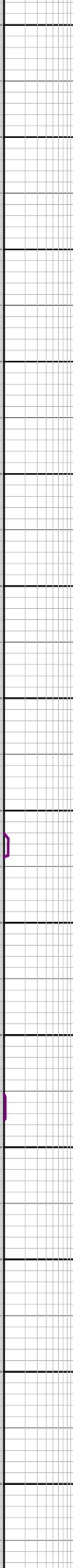
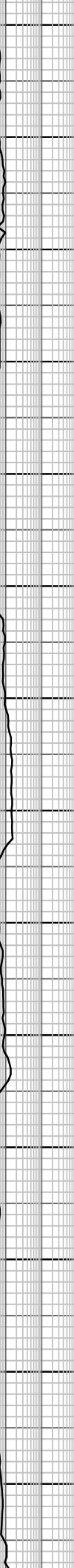
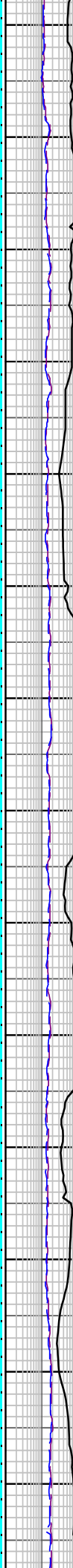
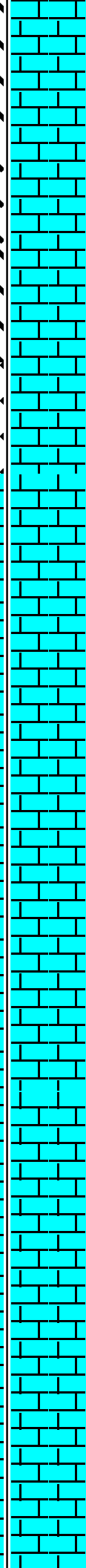
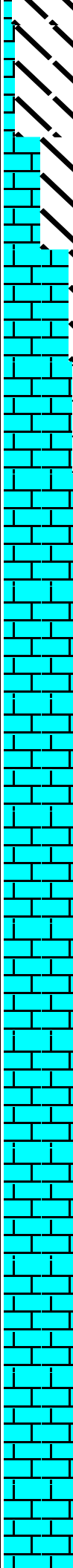


24 July 2009
27 July 2009

NB3 Smith MSF-519
311mm (12-1/4")
Jets: 2x14,5x15
Depth In: 1061.7m
Depth Out: xxxm
Drilled: xxxm in xxxhrs
Grade: xxxxxxxx



1090
1100
1110
1120
1130
1140
1150
1160
1170
1180
1190
1200
1210
1220



MD: 1118.79m Inc: 38.76°
Azi: 150.48° TVD: 1029.91m

MARL: dom olv gy, com m lt
gry-m gry, frm-mod hd,
sbbkly-blky, abd calc cly, tr
carb mat

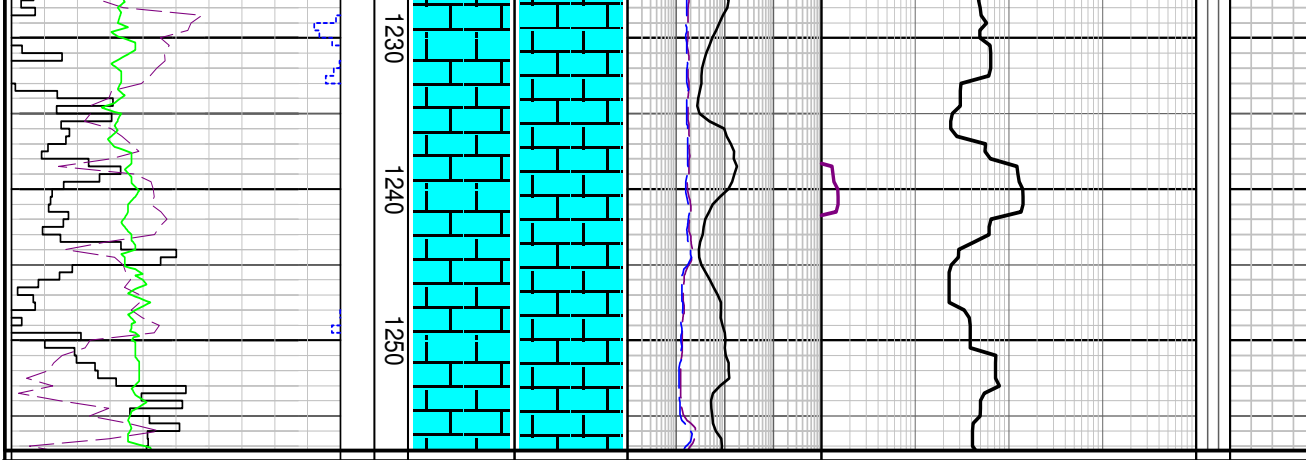
MD: 1148.08m Inc: 38.35°
Azi: 150.07° TVD: 1052.82m

MD: 1176.13m Inc: 36.43°
Azi: 148.80° TVD: 1075.11m

MARL: dom olv gy, com m lt
gry-m gry, frm-mod hd,
sbbkly-blky, abd calc cly, tr
carb mat

MD: 1205.74m Inc: 35.45°
Azi: 148.06° TVD: 1099.08m

MD: 1234.23m Inc: 35.74°
 Azi: 147.30° TVD: 1122.25m



FORMATION EVALUATION LOG

ROP (m/hr)		CORE	MD meters 1:500	CUTTINGS LITHOLOGY	INTERPRETED LITHOLOGY	TOTAL GAS ppm	CHROMATOGRAPH					FLUORESCENCE	CALCIMETRY	LITHOLOGY / REMARKS
100	50					100 1000 10000 100000	Methane ppm	Ethane ppm	Propane ppm	iso-Butane ppm	n-Butane ppm			
ROP BACKUP (m/hr)						Resistivity (Deep)								
WEIGHT ON BIT (klbf)						0.2 2000								
Gamma Ray						ohmm								
API						Resistivity (Shallow)								
						0.2 2000								
						ohmm								
							100 1000 10000 100000							