



Company : 3TEC ENERGY CORP

Well : Basker-7

Interval : 145.00 - 2922.20 meters

Created : 29/Jul/2009 4:43:02 AM



INTEQ

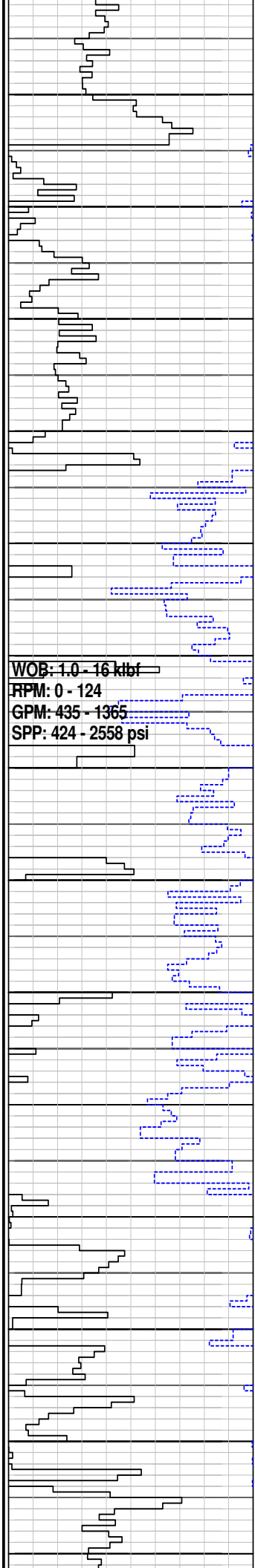
### FORMATION EVALUATION LOG

ROP (m/hr)	CORE	MID meters	CUTTINGS LITHOLOGY	INTERPRETED LITHOLOGY	TOTAL GAS (%)		CHROMATOGRAPH					FLUORESCENCE	CALCIOMETRY	LITHOLOGY / REMARKS
					Resistivity (Deep)		Methane ppm							
					0.1	1000	Ethane ppm							
100		1:50			0.1	1000	Propane ppm							<p>All depth measurements in meters referenced from Rotary Table (RT)  RT-AHD = 21.5m  Water depth = 154.2mMDRT  RT-Seabed = 175.7mMDRT</p> <p>Basker-7 spudded at 03:00hrs on 22 July 2009</p> <p>MD: 175.70m Inc: 0.00°  Azi: 150.85° TVD: 175.70m</p> <p>Drill with seawater and hi-vis sweeps. Returns to Seabed.</p> <p>Set 762mm (30") x 508mm (20") casing shoe at 209.0mMDRT</p> <p>MD: 226.76m Inc: 0.00°  Azi: 128.45° TVD: 226.76m</p>
50						iso-Butane ppm								
ROP BACKUP (m/hr)							n-Butane ppm							
300							iso-Pentane ppm							
0							n-Pentane ppm							
Gamma Ray														
200														
API														
		150												
		160												
		170												
		180												
		190												
		200												
		210												
		220												
		230												
		240												

NB1 Reed-Y11C  
660mm(26")  
Jets: 3x22,1x16  
Depth In: 175.7m  
Depth Out: 210.7m  
Drilled: 35.0m in 0.5hrs  
Grade: F-1

22 July 2009  
28 July 2009

NB2 Smith XP-VCPS  
406mm(16")  
Jets: 3x22,1x15  
Depth In: 210.7m  
Depth Out: 1061.7m  
Drilled: 851.0m in 13.9hrs  
Grade: F-1-IN



**WOB: 1.0 - 16 klf**  
**RPM: 0 - 124**  
**GPM: 435 - 1365**  
**SPP: 424 - 2558 psi**

250  
260  
270  
280  
290  
300  
310  
320  
330  
340  
350  
360  
370  
380

Drill with seawater and hi-vis sweeps. Returns to Seabed.

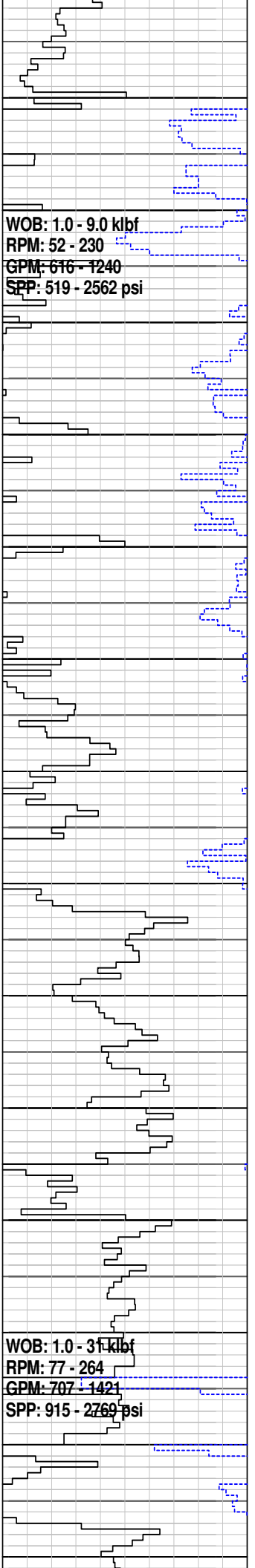
MD: 255.43m Inc: 0.36°  
Azi: 74.37° TVD: 255.43m

MD: 284.01m Inc: 0.78°  
Azi: 284.01° TVD: 284.01m

MD: 312.87m Inc: 1.11°  
Azi: 151.68° TVD: 312.86m

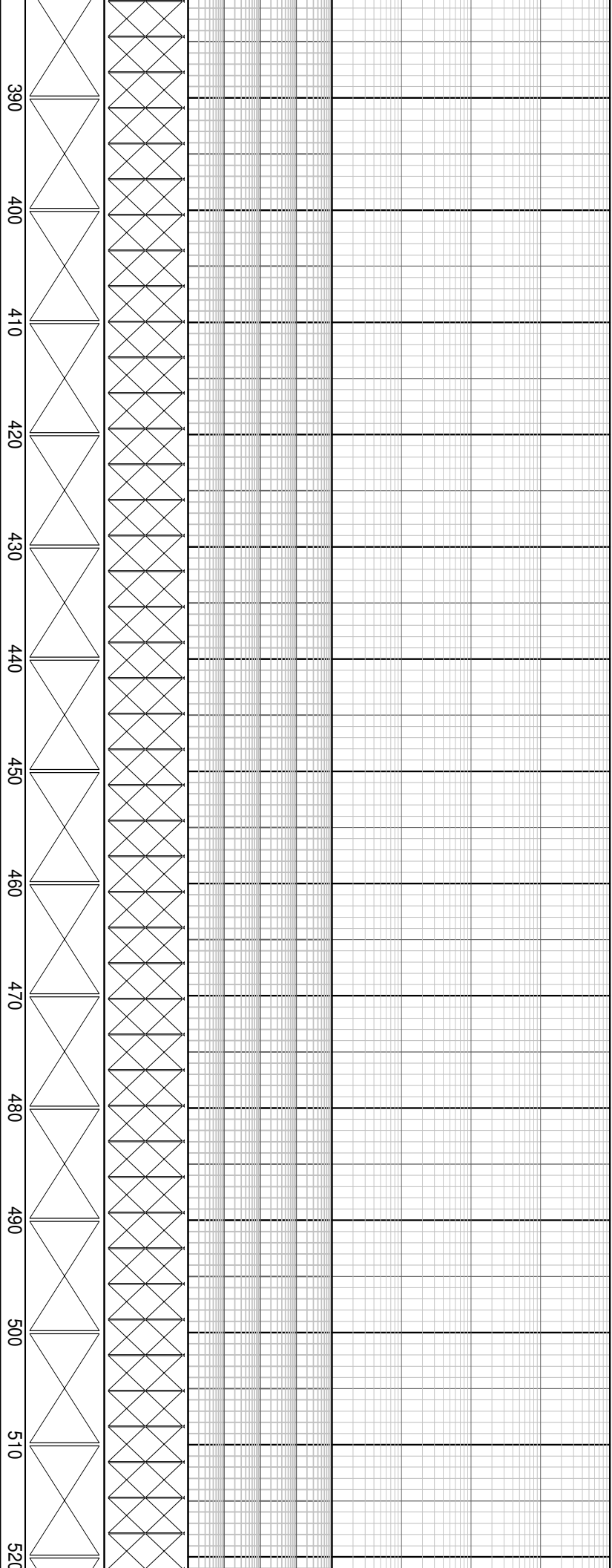
MD: 342.04m Inc: 1.83°  
Azi: 152.30° TVD: 342.02m

MD: 370.47m Inc: 3.26°  
Azi: 148.51° TVD: 370.43m



WOB: 1.0 - 9.0 kbf  
 RPM: 52 - 230  
 GPM: 616 - 1240  
 SPP: 519 - 2562 psi

WOB: 1.0 - 31 kbf  
 RPM: 77 - 264  
 GPM: 707 - 1421  
 SPP: 915 - 2769 psi



390  
400  
410  
420  
430  
440  
450  
460  
470  
480  
490  
500  
510  
520

Drill with seawater and hi-vis sweeps. Returns to Seabed.

MD: 399.01m Inc: 4.39°  
 Azi: 145.48° TVD: 398.91m

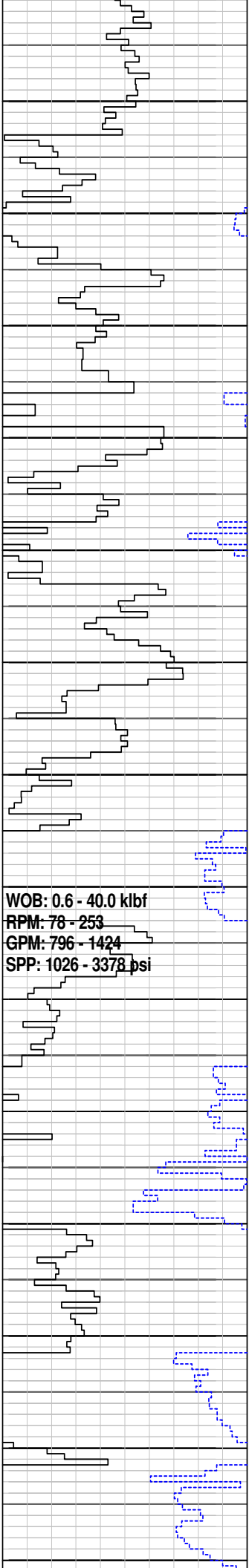
MD: 426.67m Inc: 6.45°  
 Azi: 150.06° TVD: 426.44m

MD: 455.70m Inc: 8.55°  
 Azi: 155.30° TVD: 455.22m

MD: 484.37m Inc: 10.63°  
 Azi: 155.06° TVD: 483.49m

Drill with seawater and hi-vis sweeps. Returns to Seabed.

MD: 513.87m Inc: 12.47°  
 Azi: 153.23° TVD: 512.39m



**WOB: 0.6 - 40.0 klb**  
**RPM: 78 - 253**  
**GPM: 796 - 1424**  
**SPP: 1026 - 3378 psi**

530  
540  
550  
560  
570  
580  
590  
600  
610  
620  
630  
640  
650  
660

**MD: 542.49m Inc: 15.01°**  
**Azi: 150.63° TVD: 540.19m**

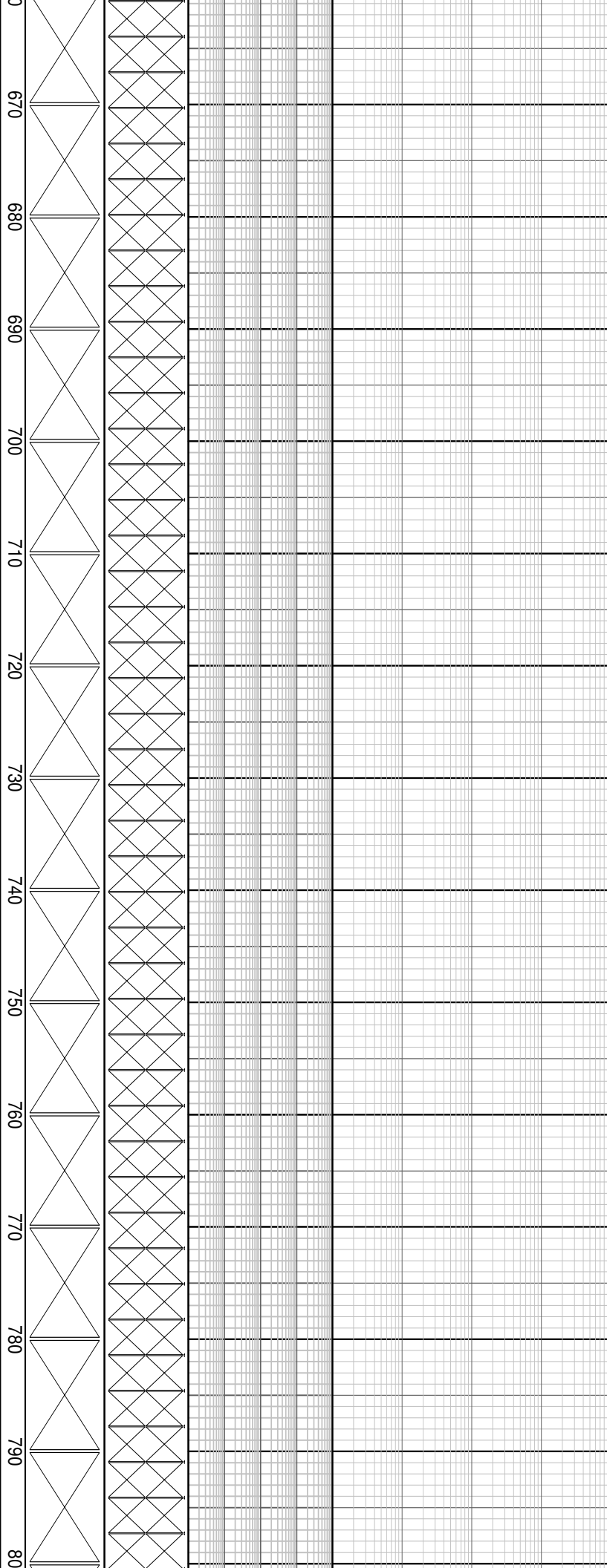
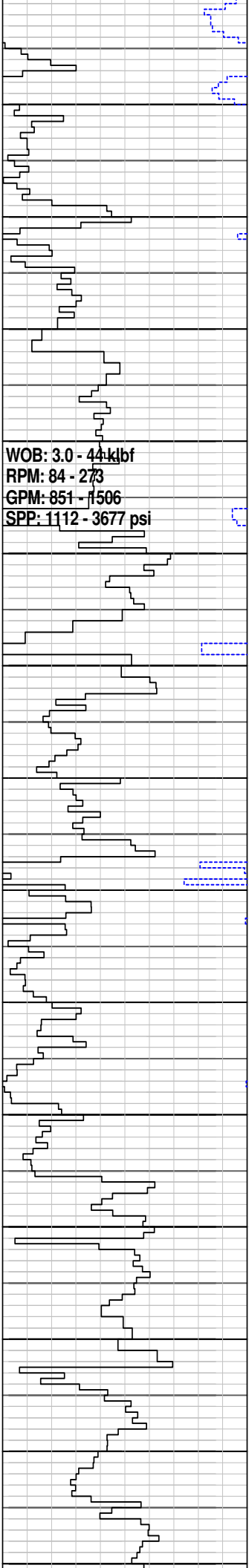
**MD: 572.14m Inc: 17.86°**  
**Azi: 149.10° TVD: 568.62m**

**Drill with seawater and hi-vis sweeps. Returns to Seabed.**

**MD: 601.14m Inc: 20.61°**  
**Azi: 150.86° TVD: 596.00m**

**MD: 629.94m Inc: 23.75°**  
**Azi: 150.85° TVD: 622.67m**

**MD: 657.35m Inc: 27.63°**  
**Azi: 152.02° TVD: 647.36m**



MD: 686.15m Inc: 28.92°  
 Azi: 155.03° TVD: 672.72m

Drill with seawater and hi-vis sweeps. Returns to Seabed.

MD: 714.52m Inc: 30.23°  
 Azi: 156.28° TVD: 697.40m

MD: 742.58m Inc: 31.04°  
 Azi: 156.67° TVD: 721.54m

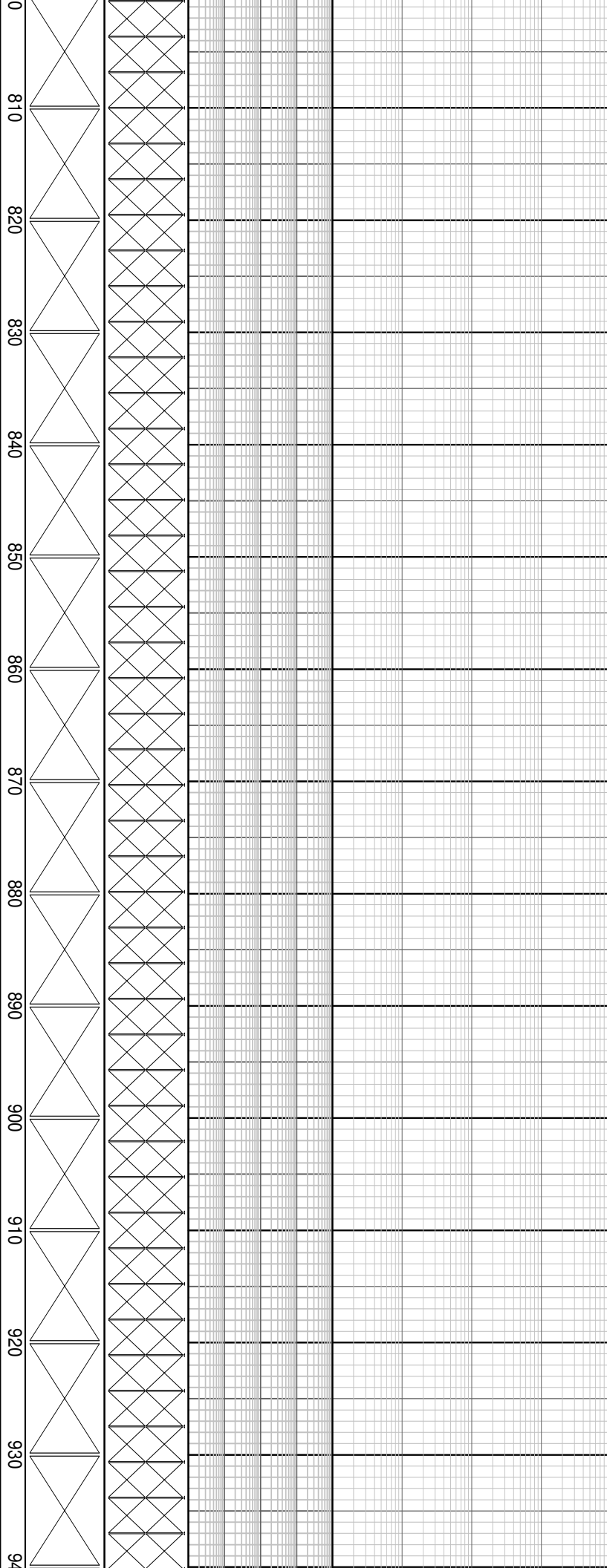
MD: 771.54m Inc: 32.48°  
 Azi: 157.40° TVD: 746.17m

Drill with seawater and hi-vis sweeps. Returns to Seabed.

WOB: 1.0 - 32 klf  
RPM: 0 - 122  
GPM: 924 - 1283  
SPP: 2082 - 3735 psi

WOB: 1.0 - 84 klf  
RPM: 120 - 240  
GPM: 1108 - 1227  
SPP: 2833 - 3889 psi

23 July 2009  
24 July 2009



MD: 799.88m Inc: 33.24°  
Azi: 154.47° TVD: 769.98m

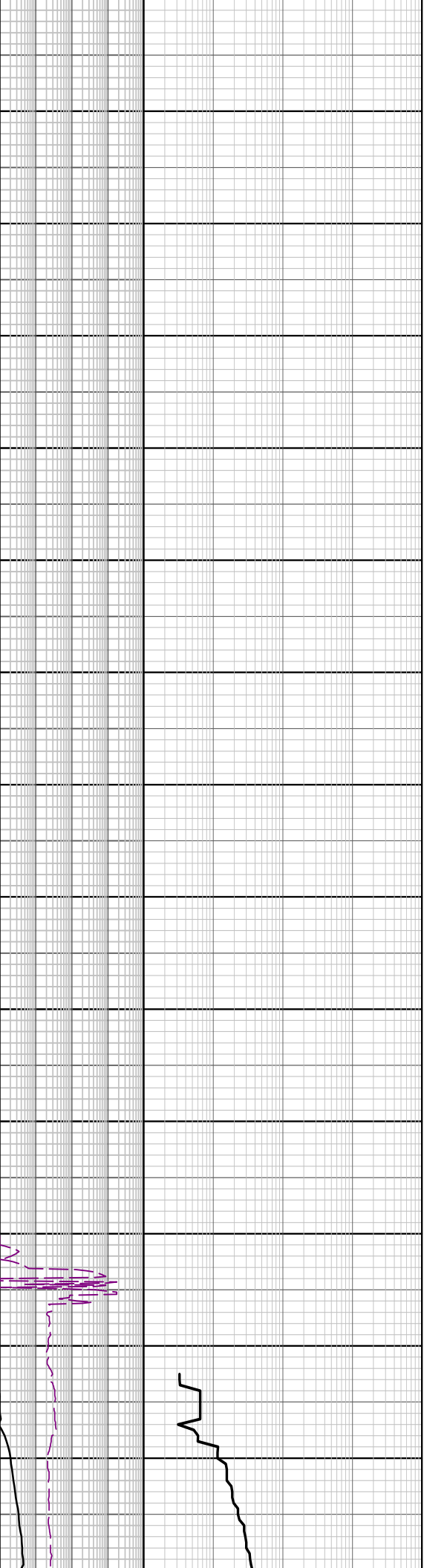
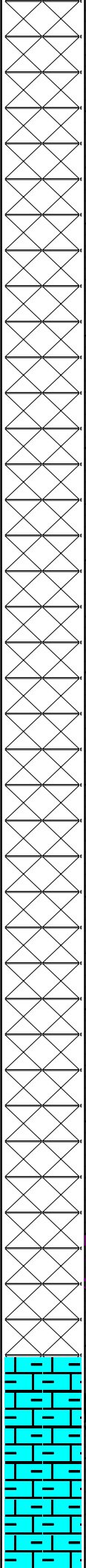
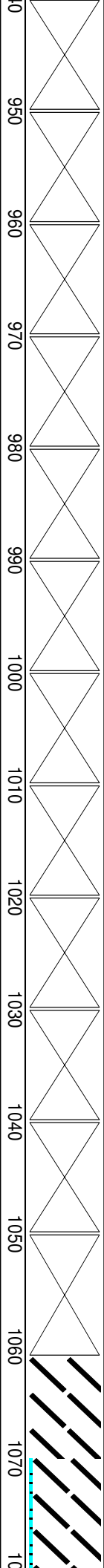
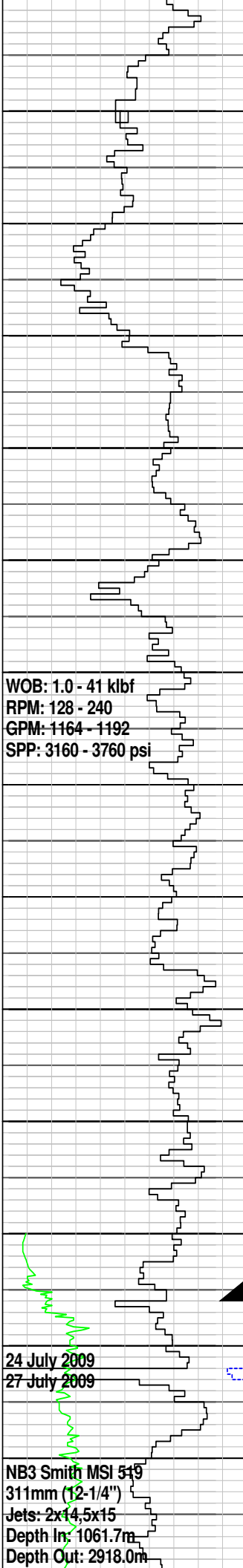
MD: 828.16m Inc: 34.09°  
Azi: 149.77° TVD: 793.52m

MD: 856.81m Inc: 34.64°  
Azi: 148.27° TVD: 817.16m

MD: 887.28m Inc: 36.54°  
Azi: 149.29° TVD: 841.94m

Drill with seawater and hi-vis sweeps. Returns to Seabed.

MD: 916.73m Inc: 36.73°  
Azi: 149.63° TVD: 865.58m



WOB: 1.0 - 41 klbf  
 RPM: 128 - 240  
 GPM: 1164 - 1192  
 SPP: 3160 - 3760 psi

24 July 2009  
 27 July 2009

NB3 Smith MSI 519  
 311mm (12-1/4")  
 Jets: 2x14,5x15  
 Depth In: 1061.7m  
 Depth Out: 2918.0m

MD: 945.11m Inc: 36.90°  
 Azi: 150.11° TVD: 888.28m

MD: 974.40m Inc: 38.19°  
 Azi: 152.01° TVD: 911.49m

Drill with seawater and hi-vis sweeps. Returns to Seabed.

MD: 1003.53m Inc: 37.48°  
 Azi: 150.94° TVD: 934.50m

MD: 1032.80m Inc: 36.51°  
 Azi: 151.41° TVD: 957.88m

Set 340mm (13-3/8") casing shoe at 1056.6mMDRT

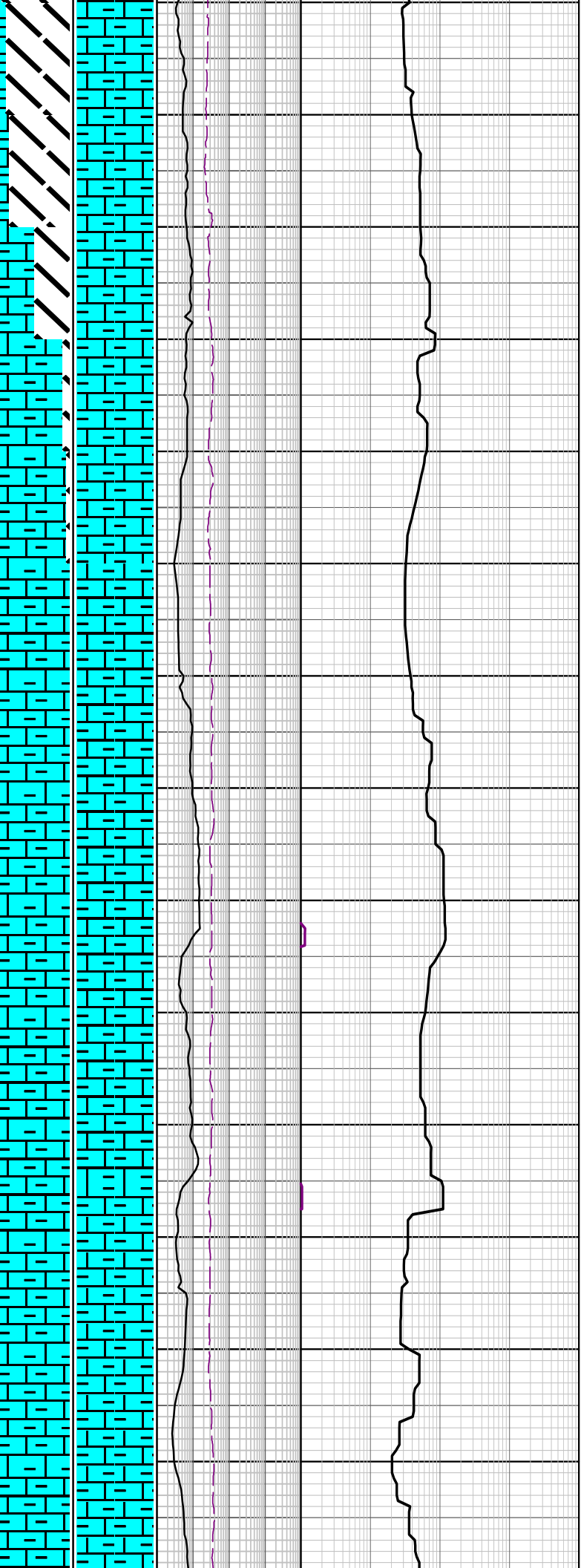
MD: 1060.99m Inc: 36.98°  
 Azi: 151.69° TVD: 984.29m

Drilled: 1856.3m in 26.6hrs  
Grade: xxxxxxxxxx

WOB: 6.0 - 43 klbf  
RPM: 84 - 121  
GPM: 805 - 1130  
SPP: 1378 - 2441 psi

WOB: 3.0 - 47 klbf  
RPM: 100 - 193  
GPM: 845 - 1178  
SPP: 1632 - 2811 psi

80  
1090  
1100  
1110  
1120  
1130  
1140  
1150  
1160  
1170  
1180  
1190  
1200  
1210  
12



MARL: dom olv gry, com m lt gry-m gry, sft frm, occ mod hd, sbblky-blky, abd calc cly, tr carb mat, tr v f sd

MW 9.0 ppg FV 48  
PV/YP 11/19 Gels 6/7/8  
Sol% 5.1 CI 49k

MD: 1118.79m Inc: 38.76°  
Azi: 150.48° TVD: 1029.91m

MARL: dom olv gry, com m lt gry-m gry, frm-mod hd, sbblky-blky, abd calc cly, tr carb mat

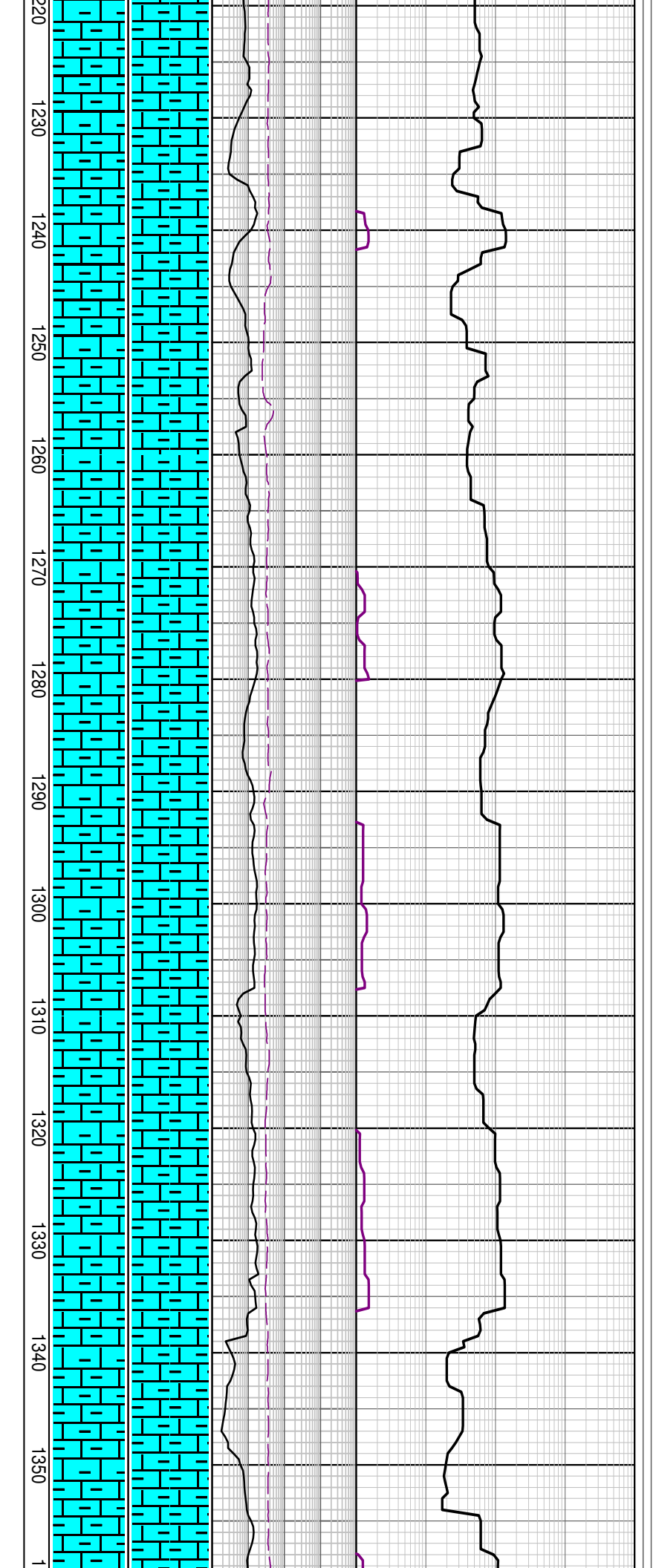
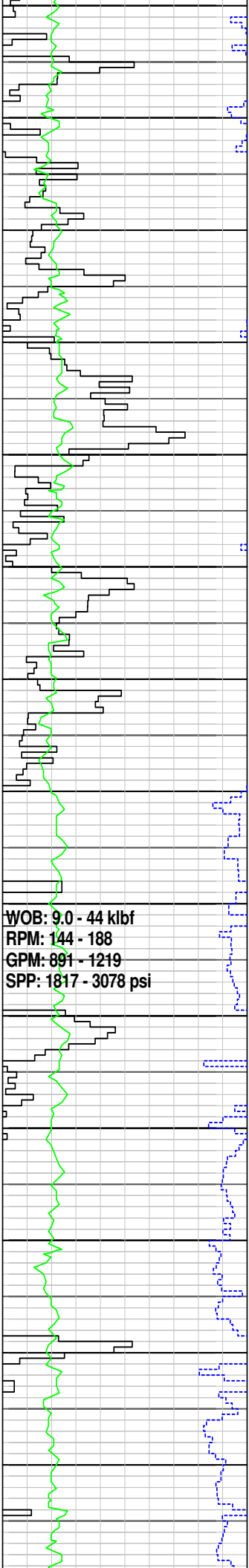
MD: 1148.08m Inc: 38.35°  
Azi: 150.07° TVD: 1052.82m

MD: 1176.13m Inc: 36.43°  
Azi: 148.80° TVD: 1075.11m

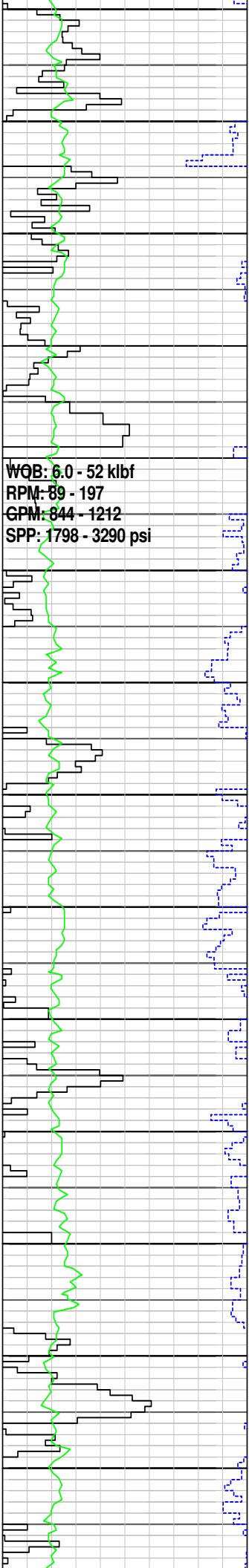
MARL: dom olv gry, com m lt gry-m gry, frm-mod hd, sbblky-blky, abd calc cly, tr carb mat

MD: 1205.74m Inc: 35.45°  
Azi: 148.06° TVD: 1099.08m

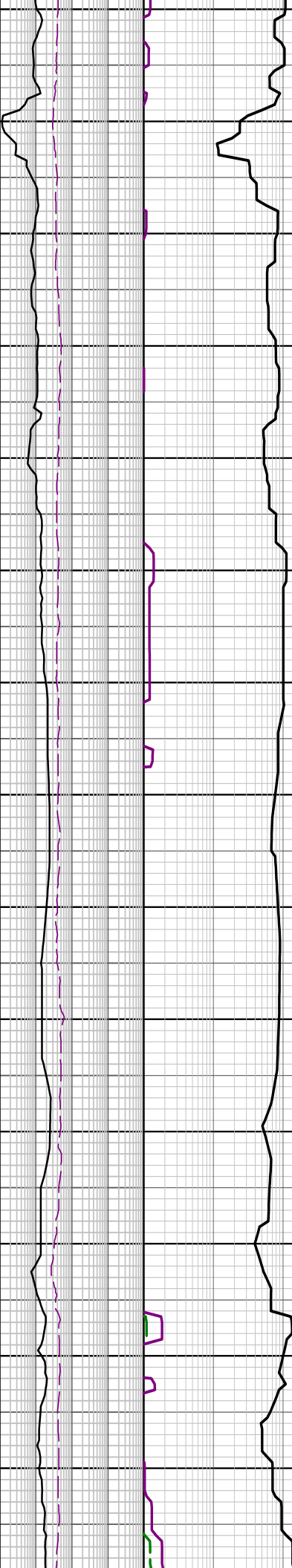
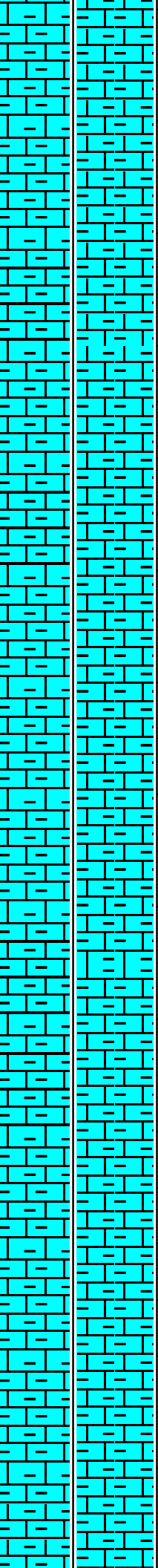




	<p>MD: 1234.23m Inc: 35.74°          Azi: 147.30° TVD: 1122.25m</p>
	<p>MARL: dom olv gry, occ v lt gry-m gry, frm-mod hd, sbblky-blky, abd calc cly, tr sil slit, tr blk lit frag, tr carb spks</p>
	<p>MD: 1292.39m Inc: 35.16°          Azi: 148.01° TVD: 1169.62m</p>
	<p>MD: 1320.99m Inc: 34.65°          Azi: 148.19° TVD: 1189.25m</p>
	<p>MARL: dom lt olv gry-olv gry, occ m gry, frm-mod hd, sft i/p, sbblky-blky, abd calc cly, tr sil slit, tr blk lit frag, tr carb spks</p>
	<p>MD: 1350.15m Inc: 35.16°          Azi: 147.62° TVD: 1213.17m</p>



360  
1370  
1380  
1390  
1400  
1410  
1420  
1430  
1440  
1450  
1460  
1470  
1480  
1490  
1



MD: 1379.29m Inc: 34.46°  
 Azi: 147.45° TVD: 1237.10m

MARL: dom lt olv gry-olv gry,  
 occ m gry, frm-mod hd, dom  
 mod hd, sbblky-blky, abd  
 calc cly, tr sil slt, tr-rr carb  
 mat

MD: 1407.09m Inc: 32.86°  
 Azi: 146.85° TVD: 1260.24m

MD: 1436.33m Inc: 32.04°  
 Azi: 146.56° TVD: 1284.91m

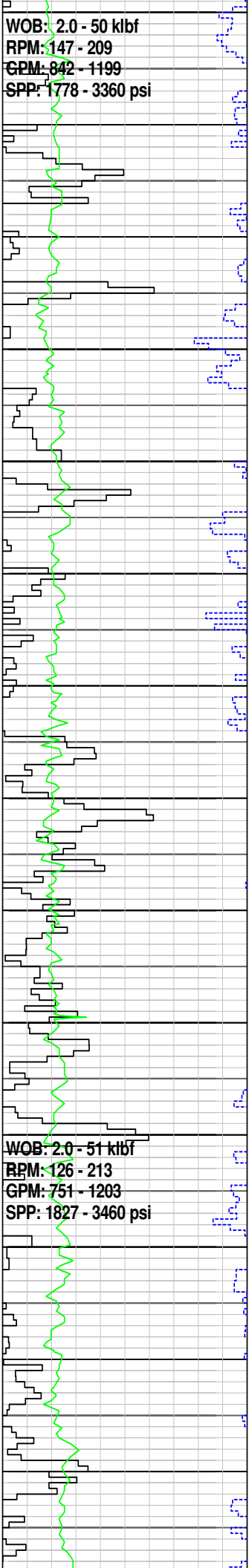
MARL: dom lt olv gry-olv gry,  
 occ m gry, frm-mod hd, dom  
 mod hd, sbblky-blky, abd  
 calc cly, tr sil slt, tr-rr carb  
 mat

MD: 1465.22m Inc: 31.37°  
 Azi: 147.89° TVD: 1309.49m

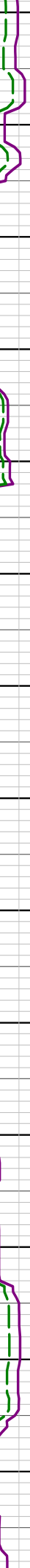
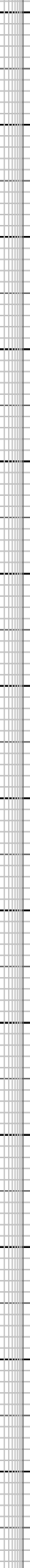
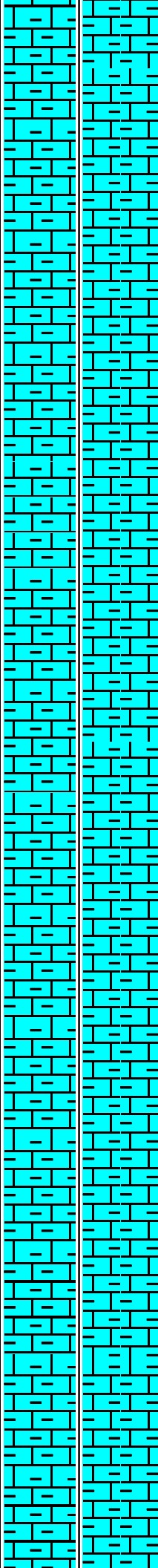
MD: 1493.86m Inc: 32.99°  
 Azi: 152.10° TVD: 1333.72m

WOB: 2.0 - 50 klf  
RPM: 147 - 209  
GPM: 842 - 1199  
SPP: 1778 - 3360 psi

WOB: 2.0 - 51 klf  
RPM: 126 - 213  
GPM: 751 - 1203  
SPP: 1827 - 3460 psi



500  
1510  
1520  
1530  
1540  
1550  
1560  
1570  
1580  
1590  
1600  
1610  
1620  
1630



MARL: dom m gry-olv gry,  
occ m lt gry, frm-mod hd,  
dom mod hd, sbblky-blky,  
abd calc cly, tr sil slit, tr-rr  
carb mat

MD: 1522.57m Inc: 33.53°  
Azi: 156.05° TVD: 1357.74m

MD: 1551.08m Inc: 33.73°  
Azi: 156.30° TVD: 1381.48m

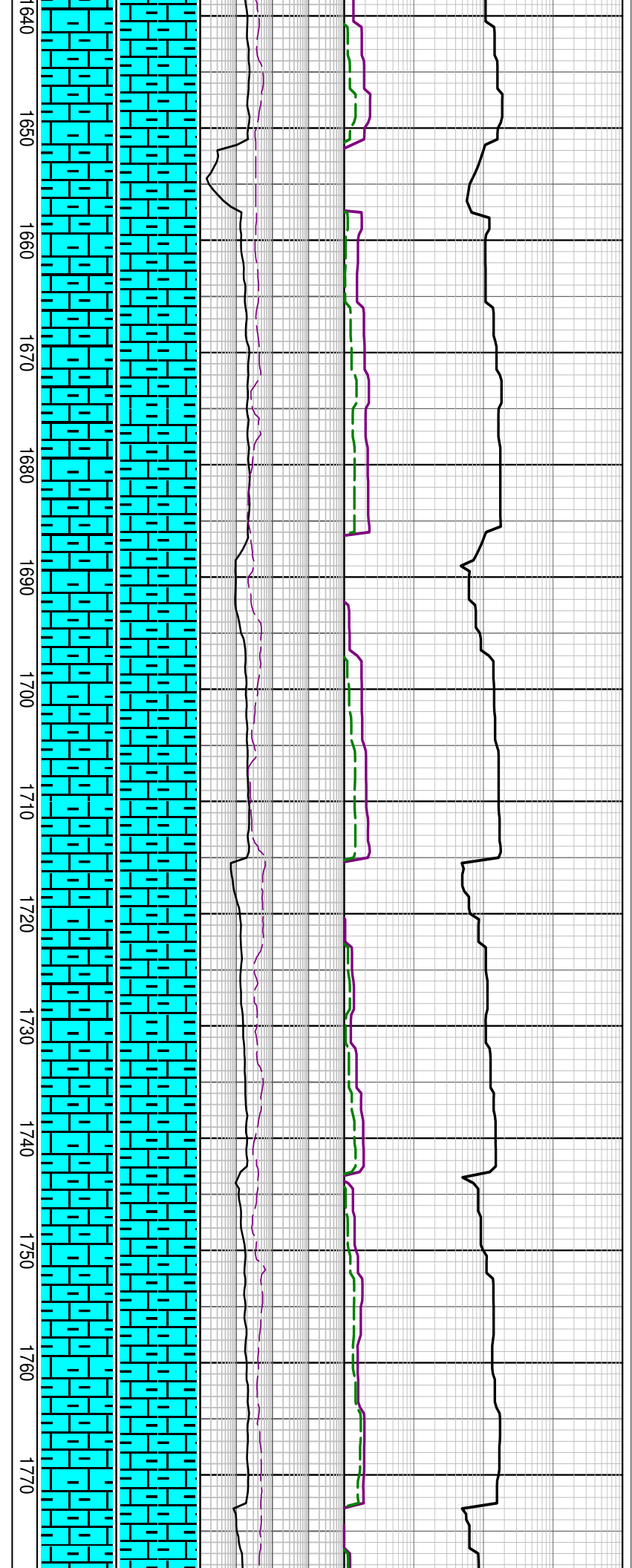
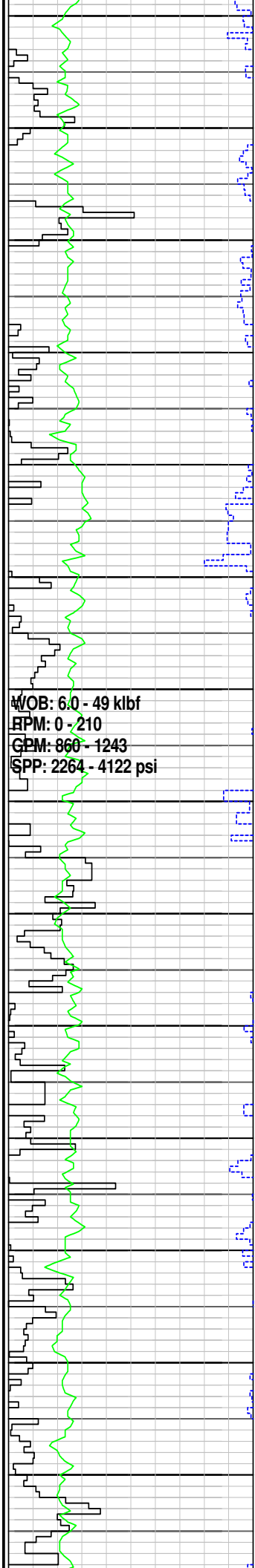
MARL: dom m gry-olv gry,  
occ m lt gry, frm-mod hd,  
dom mod hd, sbblky-blky,  
abd calc cly, tr sil slit, tr-rr  
carb mat

MD: 1579.74m Inc: 33.84°  
Azi: 153.27° TVD: 1405.29m

MD: 1608.46m Inc: 35.27°  
Azi: 150.47° TVD: 1428.95m

MARL: dom m gry-olv gry,  
com m lt gry, frm-mod hd,  
dom mod hd, sbblky-blky,  
abd calc cly, tr sil slit, tr-rr  
carb mat

MD: 1637.45m Inc: 36.72°



MD: 1637.66m Inc: 36.12°  
 Azi: 150.18° TVD: 1452.40m

MD: 1666.26m Inc: 36.12°  
 Azi: 150.25° TVD: 1475.59m

MARL: dom m gry-olv gry,  
 com m lt gry, frm-mod hd,  
 dom mod hd, sbblky-blky,  
 abd calc cly, tr sil slit, tr-rr  
 carb mat

MD: 1694.89m Inc: 39.06°  
 Azi: 149.72° TVD: 1498.72m

MD: 1723.86m Inc: 36.07°  
 Azi: 149.77° TVD: 1522.14m

MARL: dom m lt gry-lt olv  
 gry, occ m gry, frm-mod hd,  
 dom mod hd, sbblky-blky,  
 25-30% calc cly, tr sil slit, tr-rr  
 carb mat

MD: 1753.17m Inc: 36.60°  
 Azi: 149.91° TVD: 1545.75m

WOB: 11 - 49 kJbf  
RPM: 167 - 190  
GPM: 824 - 1281  
SPP: 2377 - 4110 psi

WOB: 10 - 40 kJbf  
RPM: 147 - 196  
GPM: 810 - 1161  
SPP: 2617 - 4254 psi

1780  
1790  
1800  
1810  
1820  
1830  
1840  
1850  
1860  
1870  
1880  
1890  
1900  
1910



MD: 1781.25m Inc: 36.45°  
Azi: 149.35° TVD: 1568.32m

MARL: dom m gry-olv gry, m  
lt gry, sft frm, occ mod hd,  
sbbkly-blky, 30% calc cly, tr  
calc slt, tr v f qtz grn, tr carb  
spks, tr blk lith

MD: 1810.10m Inc: 36.88°  
Azi: 150.13° TVD: 1591.46m

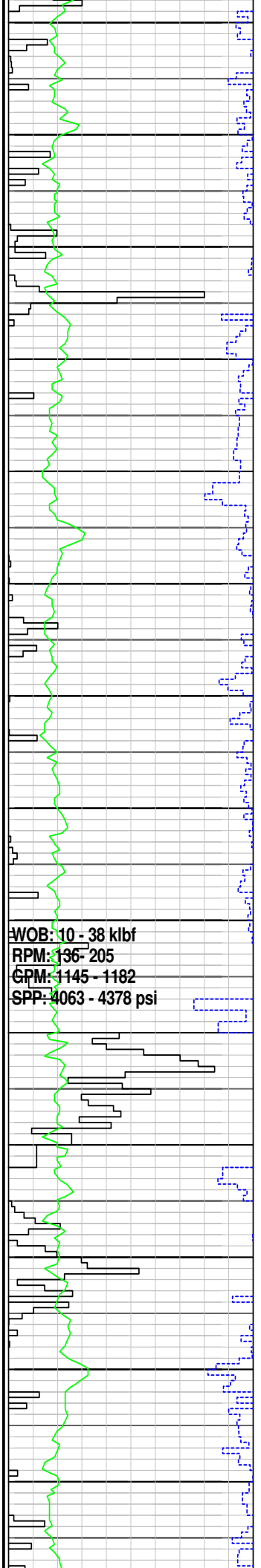
MD: 1839.26m Inc: 36.41°  
Azi: 151.48° TVD: 1614.85m

MARL: dom m gry-olv gry, m  
lt gry, sft frm, occ mod hd,  
sbbkly-blky, 30% calc cly, tr  
calc slt, tr v f qtz grn, tr carb  
spks, tr blk lith

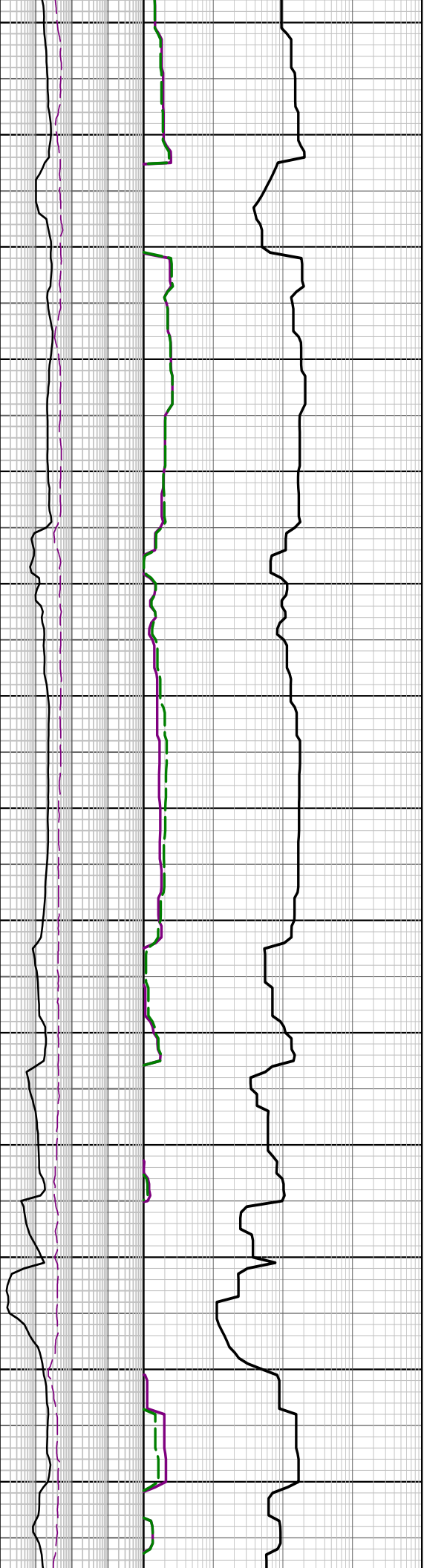
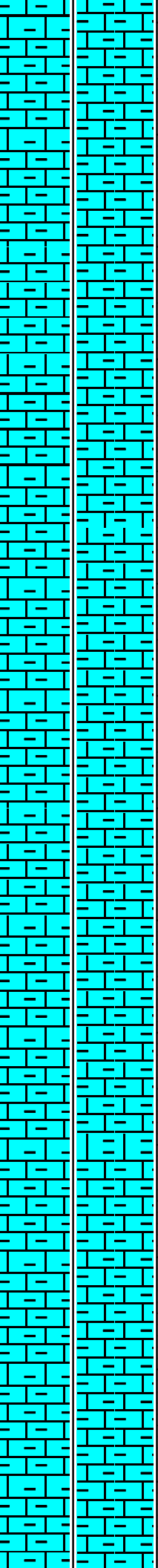
MD: 1868.17m Inc: 36.44°  
Azi: 151.16° TVD: 1638.12m

MD: 1896.82m Inc: 36.54°  
Azi: 153.07° TVD: 1661.15m

MARL: dom m gry-olv gry, m  
lt gry, sft frm, occ mod hd,  
sbbkly-blky, 25-30% calc cly,  
tr calc slt, tr v f qtz grn, tr  
carb spks, tr blk lith



1920  
1930  
1940  
1950  
1960  
1970  
1980  
1990  
2000  
2010  
2020  
2030  
2040  
2050



WOB: 10 - 38 klbf  
RPM: 136 - 205  
GPM: 1145 - 1182  
SPP: 4063 - 4378 psi

MD: 1926.08m Inc: 36.62°  
Azi: 152.97° TVD: 1684.65m

MD: 1954.85m Inc: 36.48°  
Azi: 152.04° TVD: 1707.76m

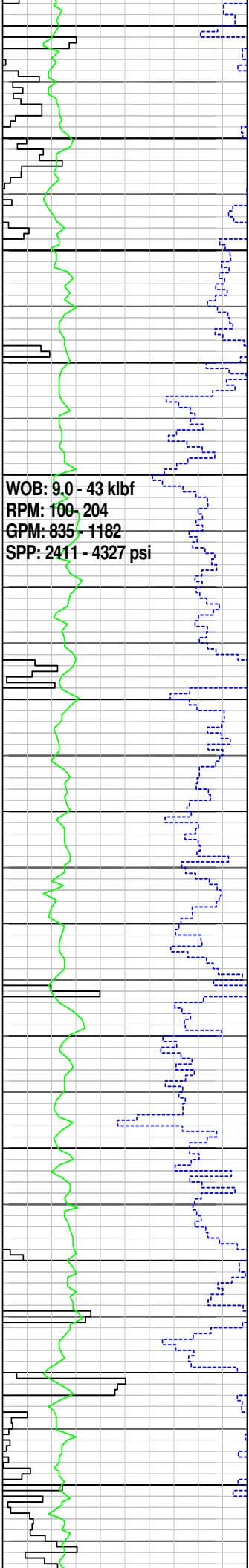
MARL: dom m gry-olv gry, m  
lt gry, sft frm, occ mod hd,  
sbbkly-blky, 25-30% calc cly,  
tr calc slt, tr v f qtz grn, tr pyr,  
tr carb spks, tr blk lith

MD: 1983.67m Inc: 36.20°  
Azi: 151.44° TVD: 1730.98m

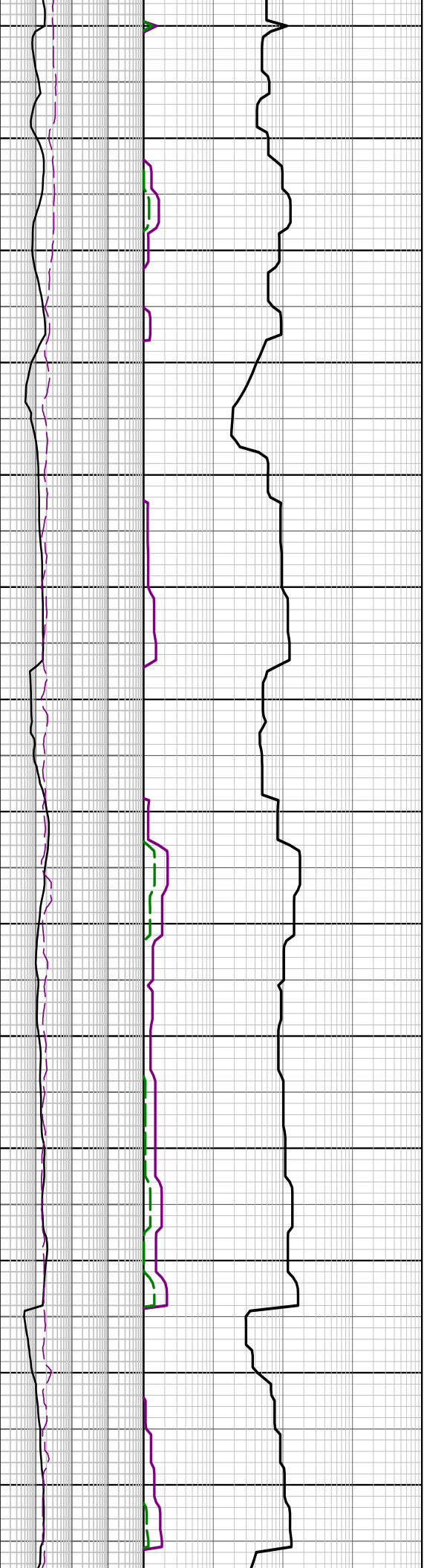
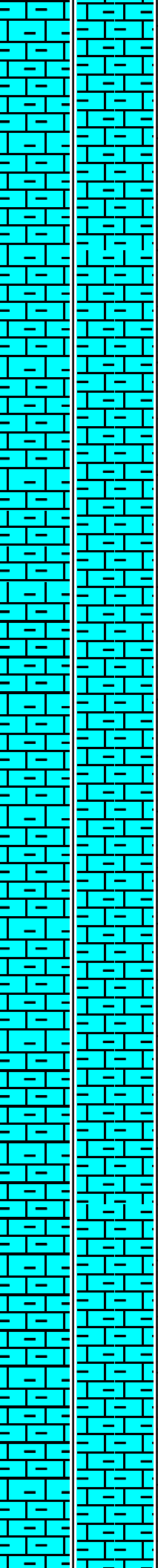
MD: 2012.91m Inc: 36.92°  
Azi: 150.95° TVD: 1754.47m

MARL: dom m gry, lt olv  
gry-olv gry, occ m lt gry,  
sft frm, occ mod hd,  
sbbkly-blky, 25-30% calc cly,  
tr calc slt, tr pyr, tr carb spks,  
tr blk lith

MD: 2041.28m Inc: 36.11°  
Azi: 150.52° TVD: 1777.26m



2060  
2070  
2080  
2090  
2100  
2110  
2120  
2130  
2140  
2150  
2160  
2170  
2180  
2190



MD: 2070.25m Inc: 36.28°  
 Azi: 150.15° TVD: 1800.65m

MARL: dom m gry, lt olv  
 gry-olv gry, occ m lt gry,  
 sft-frm, occ mod hd,  
 sbblky-blky, 25-30% calc cly,  
 tr calc slit, tr pyr, tr carb spks,  
 tr blk lith

MD: 2099.29m Inc: 36.98°  
 Azi: 149.86° TVD: 1823.95m

MD: 2127.60m Inc: 37.51°  
 Azi: 149.66° TVD: 1846.48m

MD: 2156.62m Inc: 37.88°  
 Azi: 149.51° TVD: 1869.44m

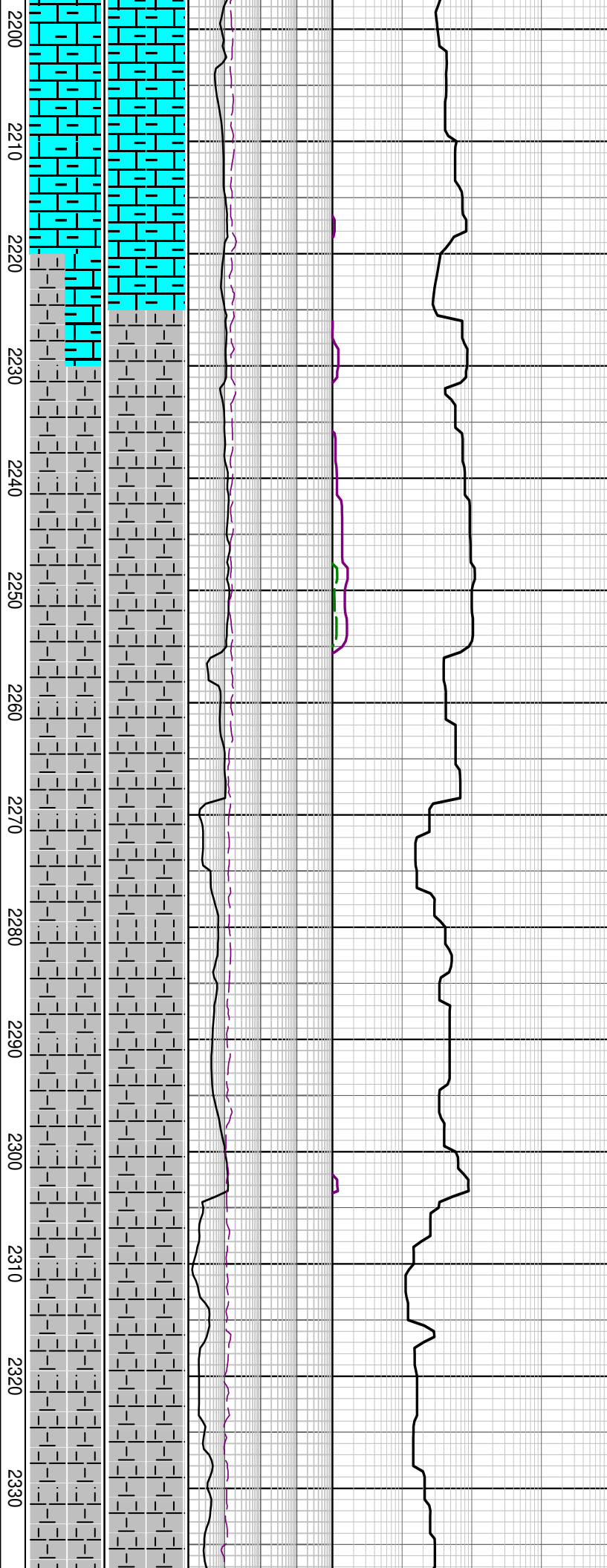
MARL: dom pl yeslh brn, olv  
 gry, frm-mod hd, fri i/p, dom  
 mod hd, sbblky-blky, 30-35%  
 calc cly, tr calc slit, tr pyr, tr  
 carb spks, tr blk lith

MD: 2184.65m Inc: 38.11°  
 Azi: 149.41° TVD: 1891.53m

WOB: 19 - 44 kbf  
RPM: 136 - 201  
GPM: 1005 - 1168  
SPP: 3401 - 4316 psi

27 July 2009  
28 July 2009

WOB: 16 - 32 kbf  
RPM: 175 - 240  
GPM: 831 - 1343  
SPP: 2539 - 4252 psi



MD: 2213.84m Inc: 38.43°  
Azi: 149.62° TVD: 1914.45m

**CALCAREOUS CLAYSTONE:**  
lt gry-m dk gry, mod hd, frm  
i/p, sbblky-blky, 75% calc cly,  
mnr sil slt, tr pyr, tr foram, tr  
glau

MD: 2242.40m Inc: 38.29°  
Azi: 150.80° TVD: 1936.84m

MW 9.6 ppg FV 52  
PV/YP 16/26 Gels 9/11/13  
Sol% 6.3 CI 38k

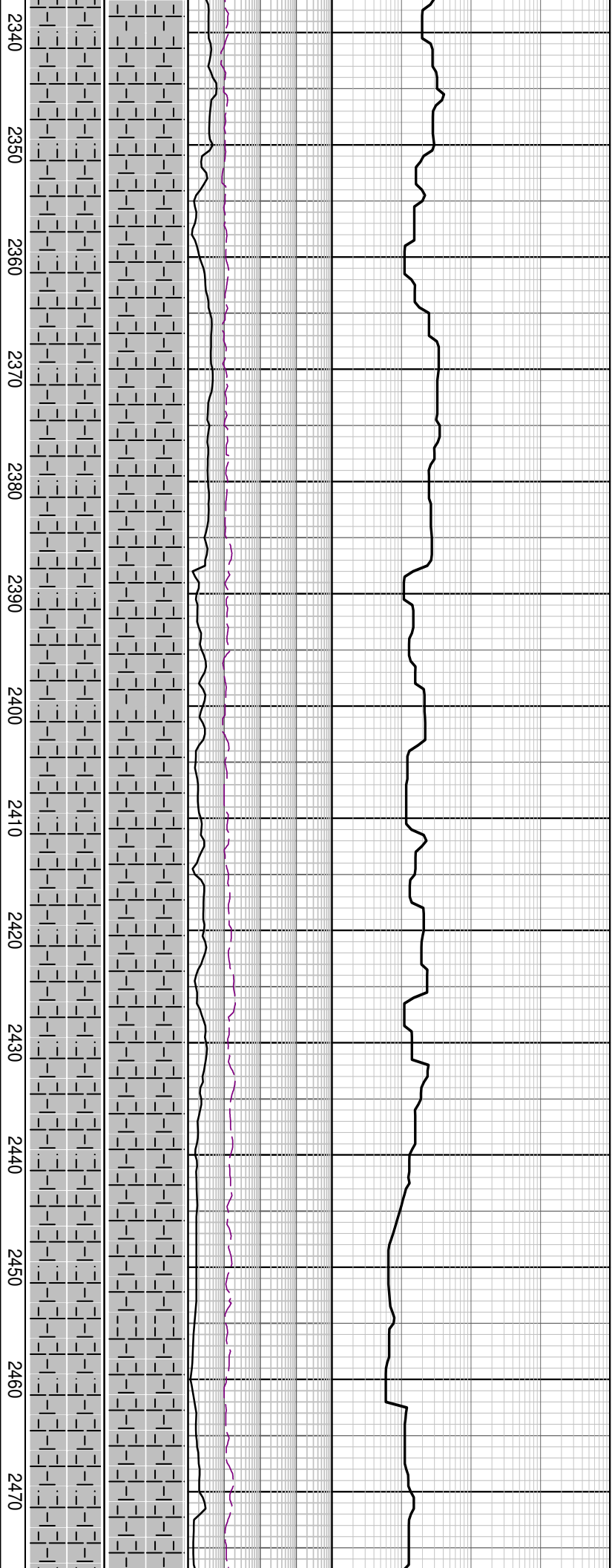
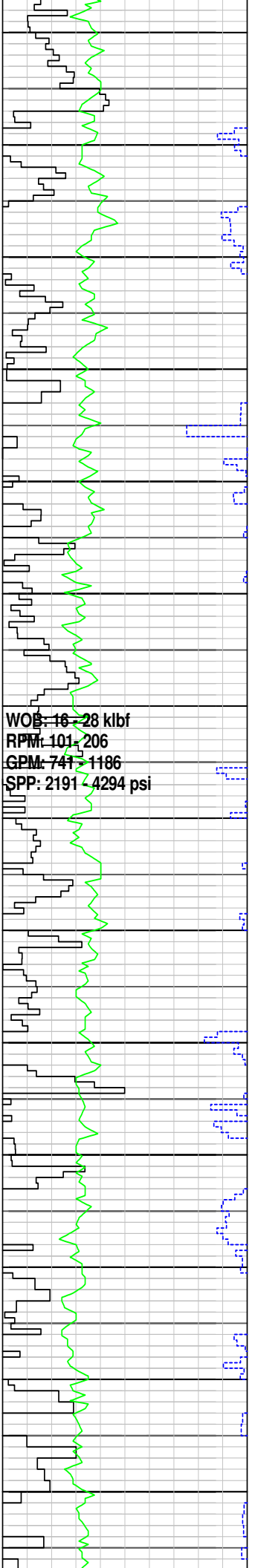
MD: 2270.15m Inc: 37.73°  
Azi: 151.59° TVD: 1958.71m

**CALCAREOUS CLAYSTONE:**  
m lt gry-m gry, sft-mod hd,  
sbblky-blky, 60% calc cly,  
mnr sil slt, tr pyr, tr foram, tr  
glau

MD: 2299.33m Inc: 37.92°  
Azi: 152.77° TVD: 1981.76m

MD: 2328.31m Inc: 37.50°  
Azi: 152.72° TVD: 2004.69m





**CALCAREOUS CLAYSTONE:**  
 m lt gry-m gry, sft-mod hd,  
 sbbkly-blky, 60% calc cly,  
 mnr sil slt, tr pyr, tr foram, tr  
 glauc

MD: 2356.86m Inc: 37.14°  
 Azi: 152.63° TVD: 2027.39m

MD: 2385.32m Inc: 36.95°  
 Azi: 152.51° TVD: 2050.11m

**CALCAREOUS CLAYSTONE:**  
 m lt gry-m gry, sft-mod hd,  
 sbbkly-blky, 60% calc cly, tr  
 sil slt, tr pyr, tr foram, tr glauc

MD: 2414.74m Inc: 37.37°  
 Azi: 152.25° TVD: 2073.55m

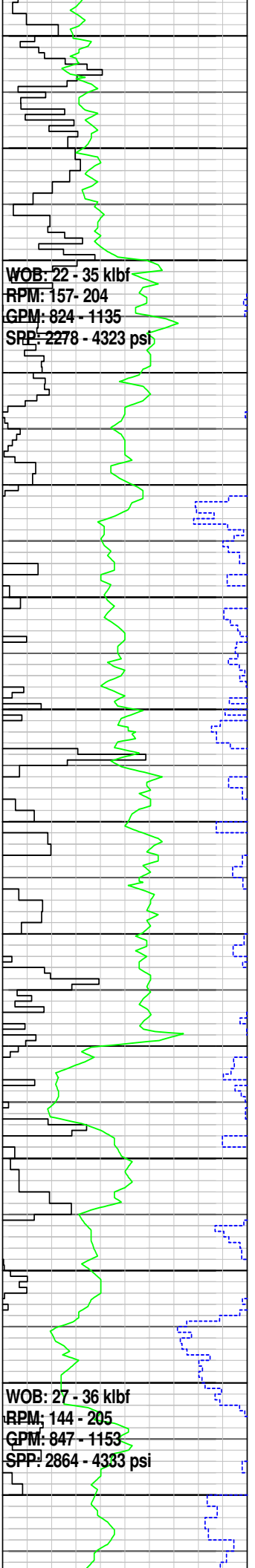
MD: 2443.40m Inc: 37.46°  
 Azi: 152.07° TVD: 2096.32m

**CALCAREOUS CLAYSTONE:**  
 m lt gry-m gry, sft-mod hd,  
 sbbkly-blky, 60% calc cly, tr  
 sil slt, tr pyr, tr foram, tr glauc

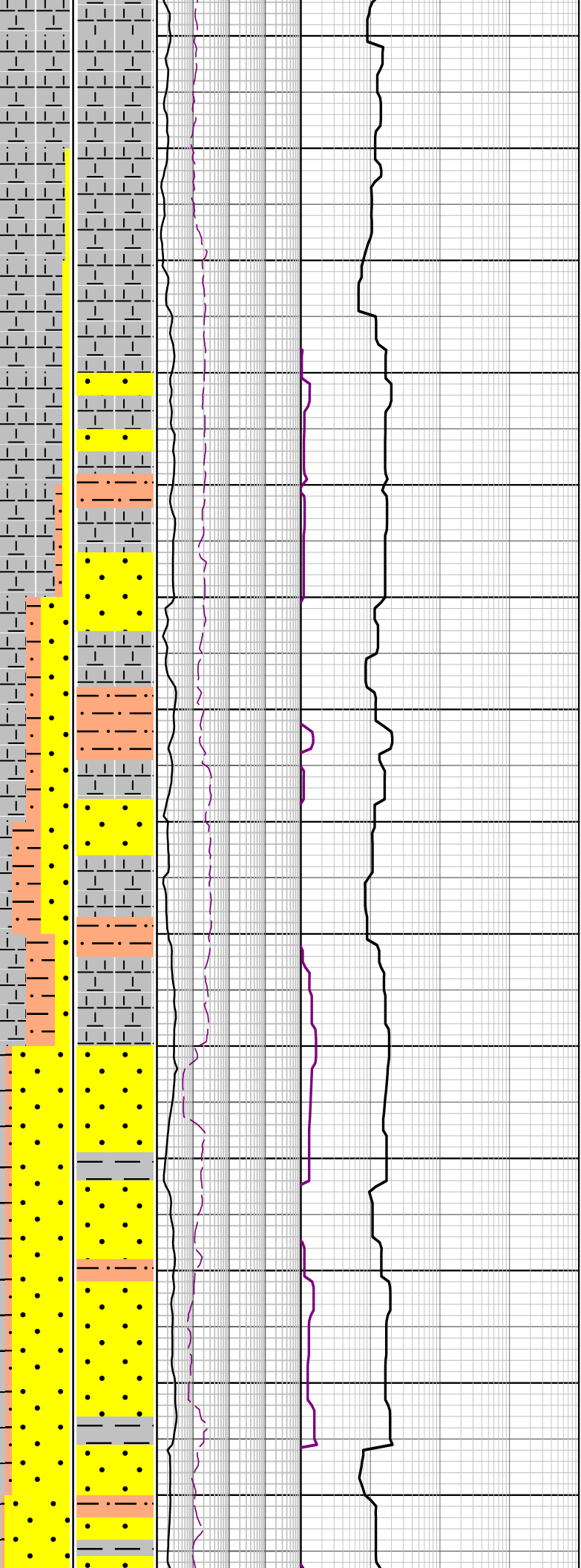
MD: 2472.38m Inc: 37.14°  
 Azi: 152.42° TVD: 2119.37m

WOB: 22 - 35 klbf  
 RPM: 157 - 204  
 GPM: 824 - 1135  
 SRP: 2278 - 4323 psi

WOB: 27 - 36 klbf  
 RPM: 144 - 205  
 GPM: 847 - 1153  
 SPP: 2864 - 4333 psi



2480  
2490  
2500  
2510  
2520  
2530  
2540  
2550  
2560  
2570  
2580  
2590  
2600  
2610



**CALCAREOUS CLAYSTONE:**  
 dom m dk gry, sft-mod hd,  
 sbblky-blky, 60% calc cly,  
 tr-abd glauc, mnr slit, tr foram

MD: 2501.29m Inc: 37.25°  
 Azi: 152.68° TVD: 2142.40m

**SANDSTONE:** trnsl, wh-v lt  
 gy, fri, m-crs, pr srt,  
 ang-sbang-sbrnidd, tr calc  
 mtrx, 10% glauc, tr pyr, n/s

**SILTSTONE:** m yel brn, lt  
 olv-lt olv blk, sft-frm,  
 blk-sbblky, 10% sil cly, tr  
 pyr, tr c, rr-mnr glauc

MD: 2530.46m Inc: 36.72°  
 Azi: 153.05° TVD: 2165.70m

**CALCAREOUS CLAYSTONE:**  
 dom m dk gry, sft-mod hd,  
 sbblky-blky, 60% calc cly,  
 tr-abd glauc, mnr slit, tr foram

MD: 2559.09m Inc: 37.34°  
 Azi: 152.33° TVD: 2188.55m

**SANDSTONE:** clr-trnsl, yelsh  
 gry, lse, m-crs, dom crs,  
 pr-mod srt, ang-sbang,  
 elong-sph, tr glauc, tr pyr, gd  
 inf por, n/s

MD: 2587.53m Inc: 37.75°  
 Azi: 151.79° TVD: 2211.11m

**CLAYSTONE:** lt gry-m dk gry,  
 m blsh gry, occ grnsh gry,  
 sft-mod hd, sbblky-blky, mnr  
 calc cly, rr calc slit, mnr sil slit,  
 tr pyr, tr glauc, tr carb mat

MD: 2616.24m Inc: 37.16°  
Azi: 150.34° TVD: 2233.89m

SANDSTONE: clr-trnsl, yelsh  
gry, lse, m-crs, dom crs,  
pr-mod srt, ang-sbang,  
elong-sph, tr glauc, tr pyr, gd  
inf por, n/s

MD: 2644.78m Inc: 37.10°  
Azi: 148.68° TVD: 2256.65m

SILTSTONE: m yel brn, lt olv  
gry-olv blk gry, sft frm,  
blky-sbblky, mn sil cly, tr  
pyr, tr c, rr glauc

MD: 2674.04m Inc: 37.13°  
Azi: 147.37° TVD: 2279.98m

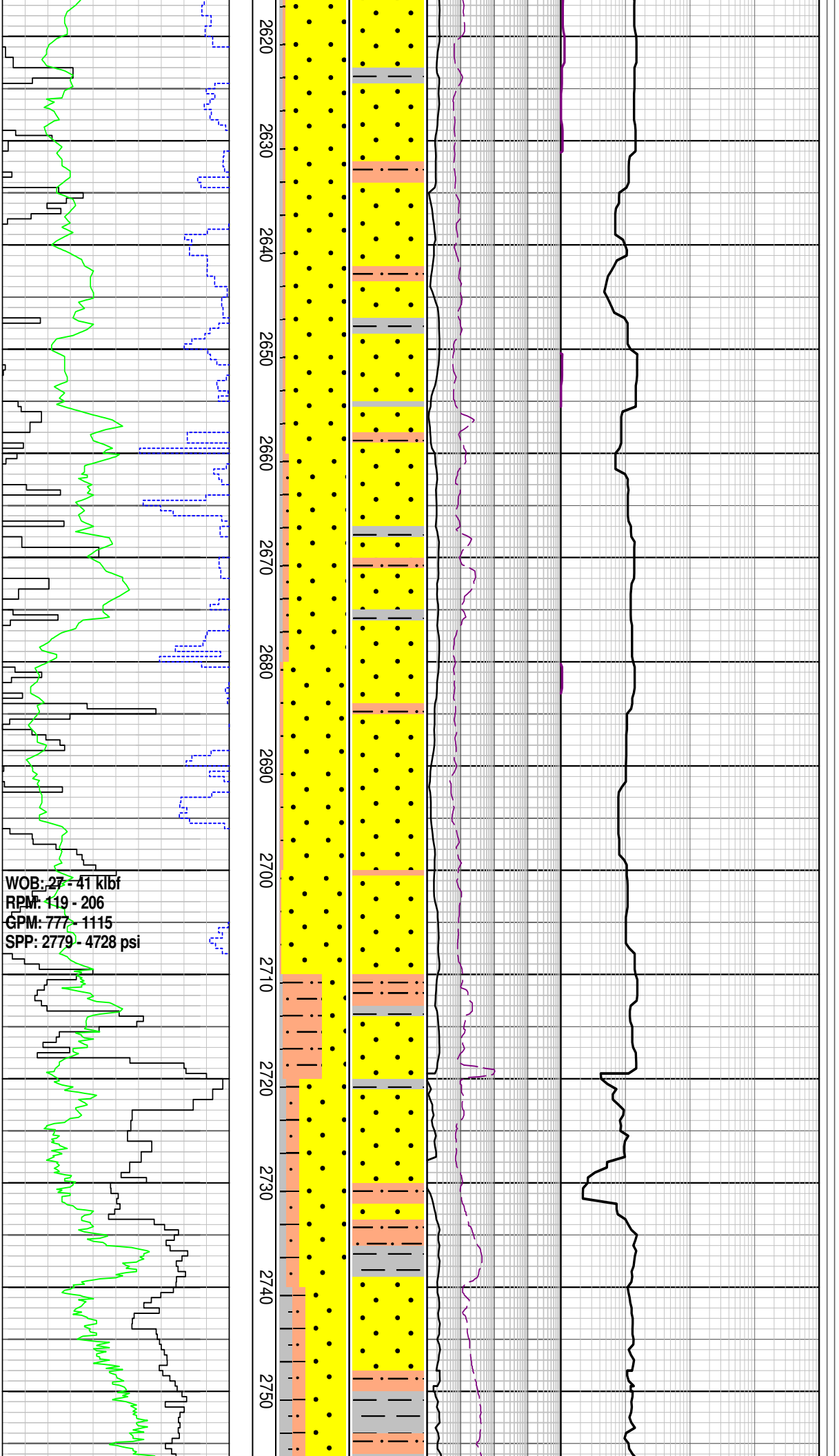
SANDSTONE: clr-trnsl, yelsh  
gry, lse, v f-v crs, dom crs,  
pr-mod srt, sbang-rnnd, sli  
elong-sph, tr glauc, tr pyr, gd  
inf por, n/s

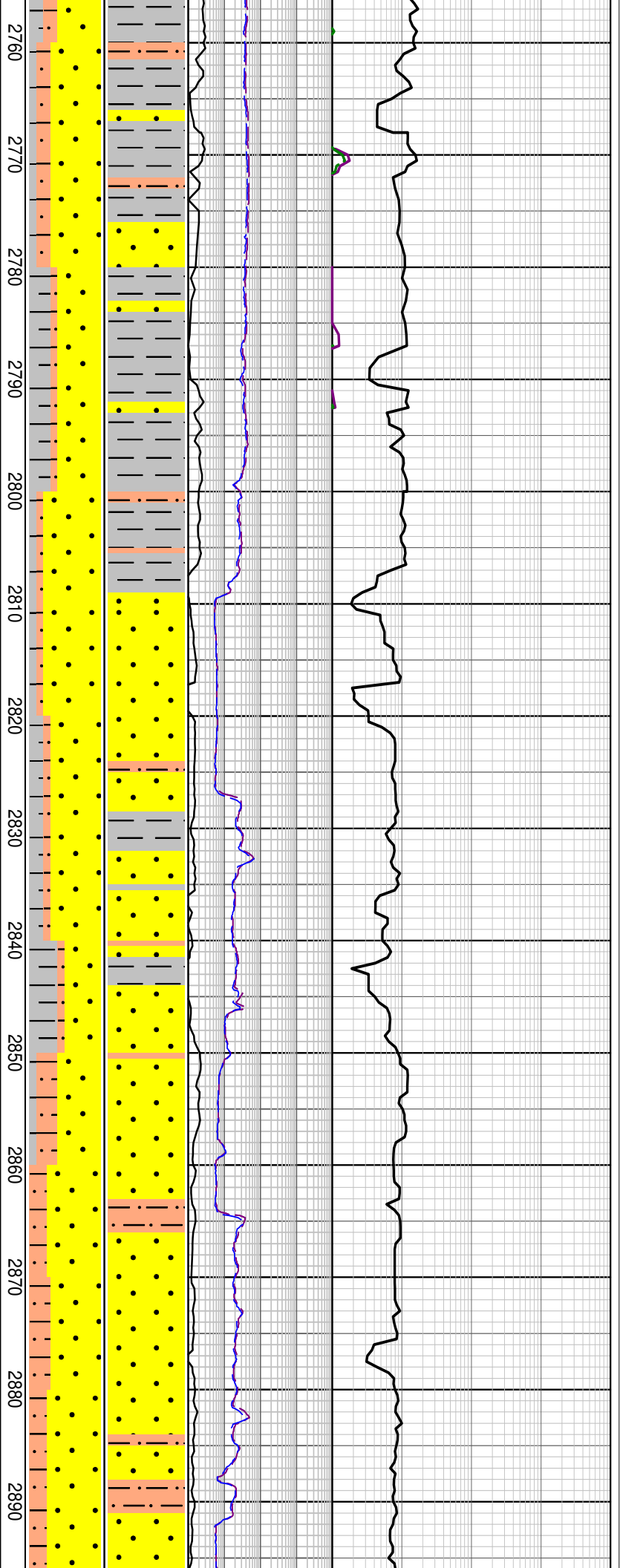
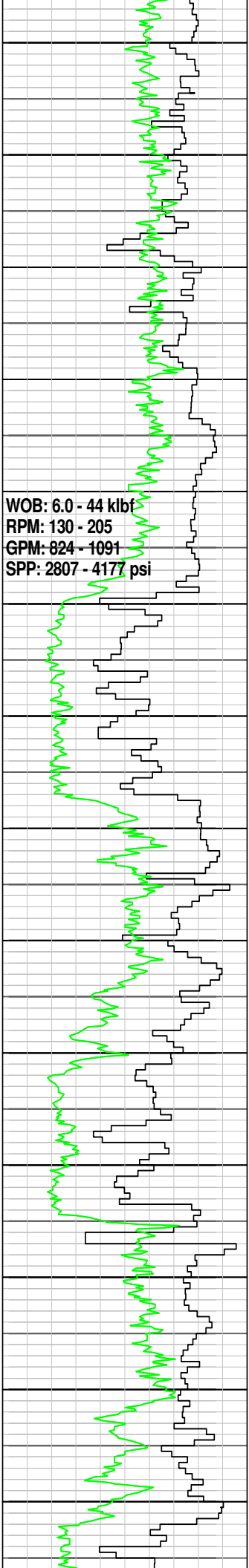
MD: 2703.21m Inc: 37.30°  
Azi: 145.69° TVD: 2303.21m

SILTSTONE: m yel brn, lt olv  
gry-olv blk, sft frm,  
sbblky-blky, mn sil cly, tr  
pyr, tr c, rr glauc

MD: 2732.96m Inc: 37.28°  
Azi: 143.89° TVD: 2326.88m

CLAYSTONE: m dk gry, blsh  
gry, occ grnsh gry, v sft-mod  
hd, sbblky-blky, mn calc cly,





rr calc slt, mnr sil slt, tr pyr, tr glauc, tr carb mat
MD: 2760.70m Inc: 37.02° Azi: 141.64° TVD: 2348.99m
SANDSTONE: clr-trnsl, yelsh gry, lse, f-crs, pr-mod srt, ang-sbrnrd, tr glauc, tr pyr, gd inf por
SILTSTONE: m brn gry, lt olv gry-olv blk, sft-frm, sbblky-blky, mnr sil cly, tr pyr, tr c, rr glauc
MD: 2789.97m Inc: 36.48° Azi: 140.97° TVD: 2372.45m
CLAYSTONE: m dk gry, m brn gry, occ grnsh gry, v sft-mod hd, amor-sbblky, mnr calc cly, rr calc slt, mnr sil slt, tr pyr, occ tr glauc, tr carb mat
MD: 2819.09m Inc: 36.62° Azi: 142.39° TVD: 2395.84m
SANDSTONE: clr-trnsl, m dk gry-olv gry, lse, v f-v crs, pr-mod srt, sbang-rnrd, tr glauc, tr pyr, tr glauc, gd inf por
MD: 2848.22m Inc: 36.88° Azi: 144.25° TVD: 2419.18m
SILTSTONE: m dk gry, brnsh gry, sft-mod hd, amor-blky, wl srt, sbang, mnr sil cly, tr pyr, tr c, rr glauc
MD: 2876.96m Inc: 37.06° Azi: 144.65° TVD: 2442.14m
SANDSTONE: clr-trnsl, trnsp, wh, lt gry, lse, v f-v crs, pr-mod srt, sbang-sbrnrd, ol

pr-mod srl, spang-sbrndd, sil  
spher-elong, tr glauc, tr pyr,  
tr glauc

WOB: 10 - 44 klbf  
RPM: 129 - 204  
GPM: 862 - 1064  
SPP: 3015 - 4349 psi

28 July 2009  
29 July 2009

2900  
2910  
2920

### FORMATION EVALUATION LOG

ROP (m/hr)		CORE	MD meters 1:500	CUTTINGS LITHOLOGY	INTERPRETED LITHOLOGY	TOTAL GAS (%)		CHROMATOGRAPH					FLUORESCENCE	CALCIMETRY	LITHOLOGY / REMARKS
100	50					0.1	1	10	100	Methane ppm					
ROP BACKUP (m/hr)						Resistivity (Deep)		Ethane ppm							
300	200					ohmm		Propane ppm							
Gamma Ray						Resistivity (Shallow)		iso-Butane ppm							
0	200					ohmm		n-Butane ppm							
API								iso-Pentane ppm							
								n-Pentane ppm							
								100	1000	10000	100000				