



Company : ROC Oil

Well : Basker-7

Interval : 142.00 - 3938.17 meters

Created : 06/Aug/2009 5:10:06 AM

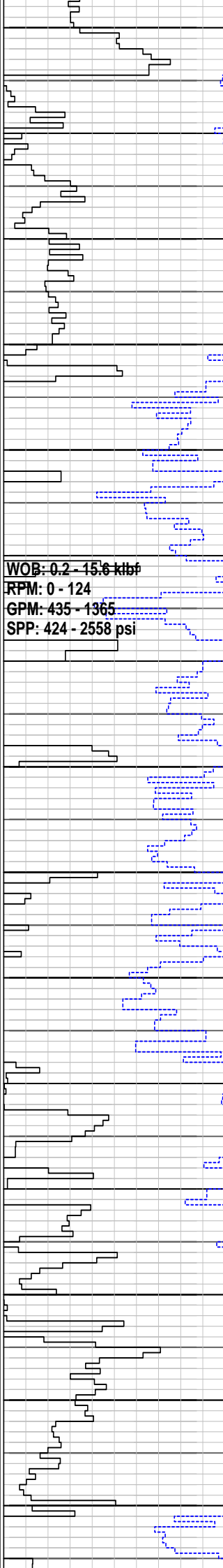


INTEQ

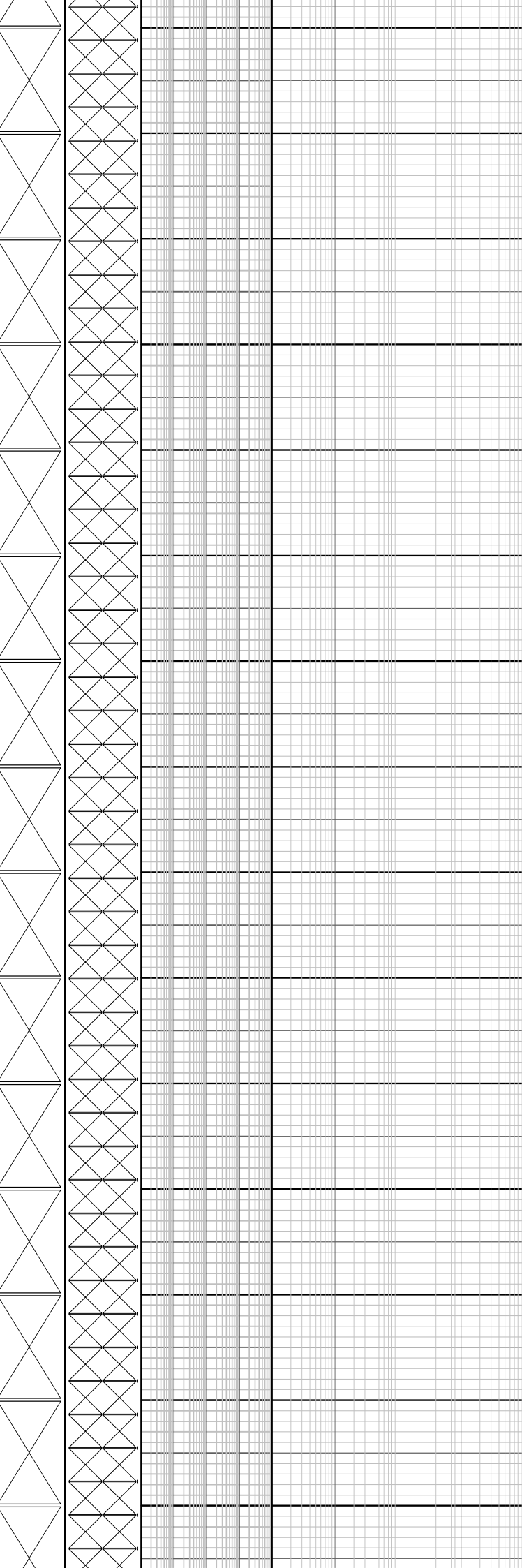
FORMATION EVALUATION LOG

ROP (m/hr)	CORE	MID meters	CUTTINGS LITHOLOGY	INTERPRETED LITHOLOGY	TOTAL GAS (%)	CHROMATOGRAPH	FLUORESCENCE	CALCIMETRY	LITHOLOGY / REMARKS
					0.1 1 10 100	Methane ppm			
100					Resistivity (Deep)	Ethane ppm			
ROP BACKUP (m/hr)					0.1 1000	Propane ppm			
300					ohmm	iso-Butane ppm			
0					Resistivity (Shallow)	n-Butane ppm			
Gamma Ray					0.1 1000	iso-Pentane ppm			
200					ohmm	n-Pentane ppm			
API									

		150							All depth measurements in meters referenced from Rotary Table (RT) RT-AHD = 21.5m Water depth = 154.2mMDRT RT-Seabed = 175.7mMDRT
		160							
		170							Basker-7 spudded at 03:00hrs on 22 July 2009
		180							MD: 175.70m Inc: 0.00° Azi: 150.85° TVD: 175.70m
NB1 Reed Y11C 660mm (26") Jets: 3x22,1x16 Depth In: 175.7m Depth Out: 210.7m Drilled: 35.0m in 0.5hrs Grade: 1-1-NO-N-0-1-WT-TD		190							Drill with seawater and hi-vis sweeps Returns to Seabed
		200							
		210							Set 762mm (30") x 508mm (20") casing shoe at 209.0mMDRT
22 July 2009 23 July 2009		220							
NB2 Smith XR+VCPS 406mm (16") Jets: 3x22,1x15 Depth In: 210.7m Depth Out: 1061.7m Drilled: 851.0m in 13.9hrs Grade: 1-1-NO-S-I-1-WT-TD		230							MD: 226.76m Inc: 0.00° Azi: 128.45° TVD: 226.76m
		240							



250
260
270
280
290
300
310
320
330
340
350
360
370
380
390



Drill with seawater and hi-vis sweeps
Returns to Seabed

MD: 255.43m Inc: 0.36°
Azi: 74.37° TVD: 255.43m

MD: 284.01m Inc: 0.78°
Azi: 284.01° TVD: 284.01m

MD: 312.87m Inc: 1.11°
Azi: 151.68° TVD: 312.86m

MD: 342.04m Inc: 1.83°
Azi: 152.30° TVD: 342.02m

MD: 370.47m Inc: 3.26°
Azi: 148.51° TVD: 370.43m

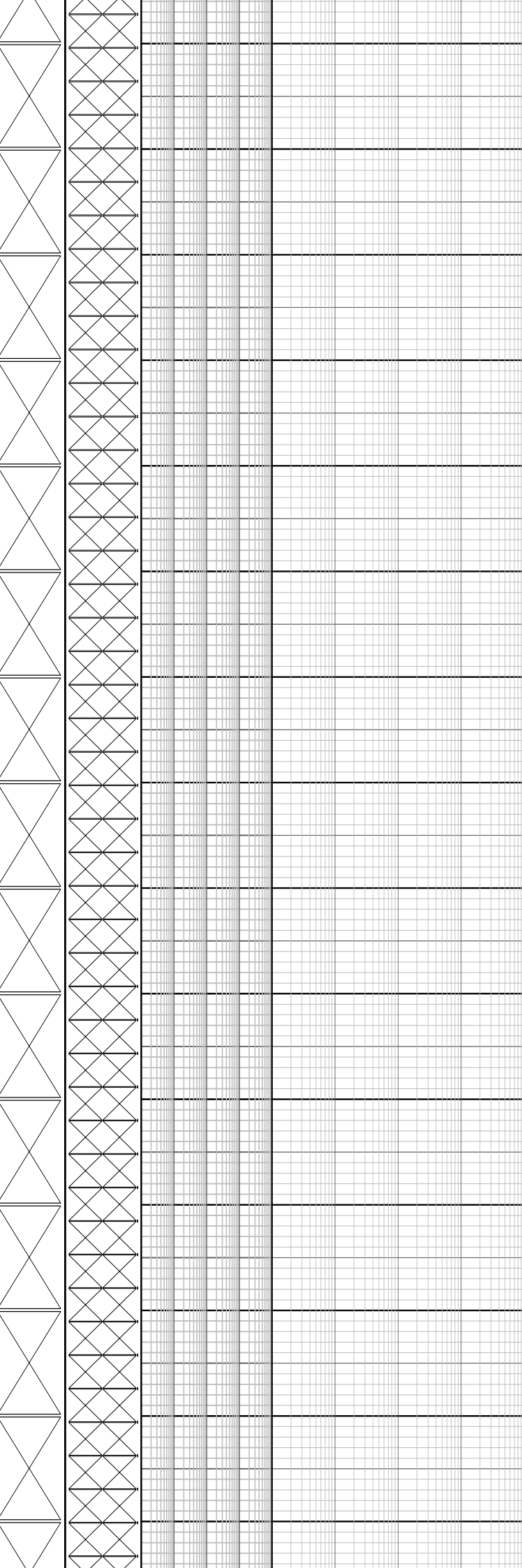
WOB: 0.2 - 15.6 klf
RPM: 0 - 124
GPM: 435 - 1365
SPP: 424 - 2558 psi

Drill with seawater and hi-vis

WOB: 0.1 - 8.9 klbf
RPM: 52 - 230
GPM: 616 - 1240
SPP: 519 - 2562 psi

WOB: 0.6 - 31.4 klbf
RPM: 77 - 264
GPM: 707 - 1421
SPP: 915 - 2769 psi

400
410
420
430
440
450
460
470
480
490
500
510
520
530
540



Drill with seawater and hi-vis sweeps

Returns to Seabed

MD: 399.01m Inc: 4.39°
Azi: 145.48° TVD: 398.91m

MD: 426.67m Inc: 6.45°
Azi: 150.06° TVD: 426.44m

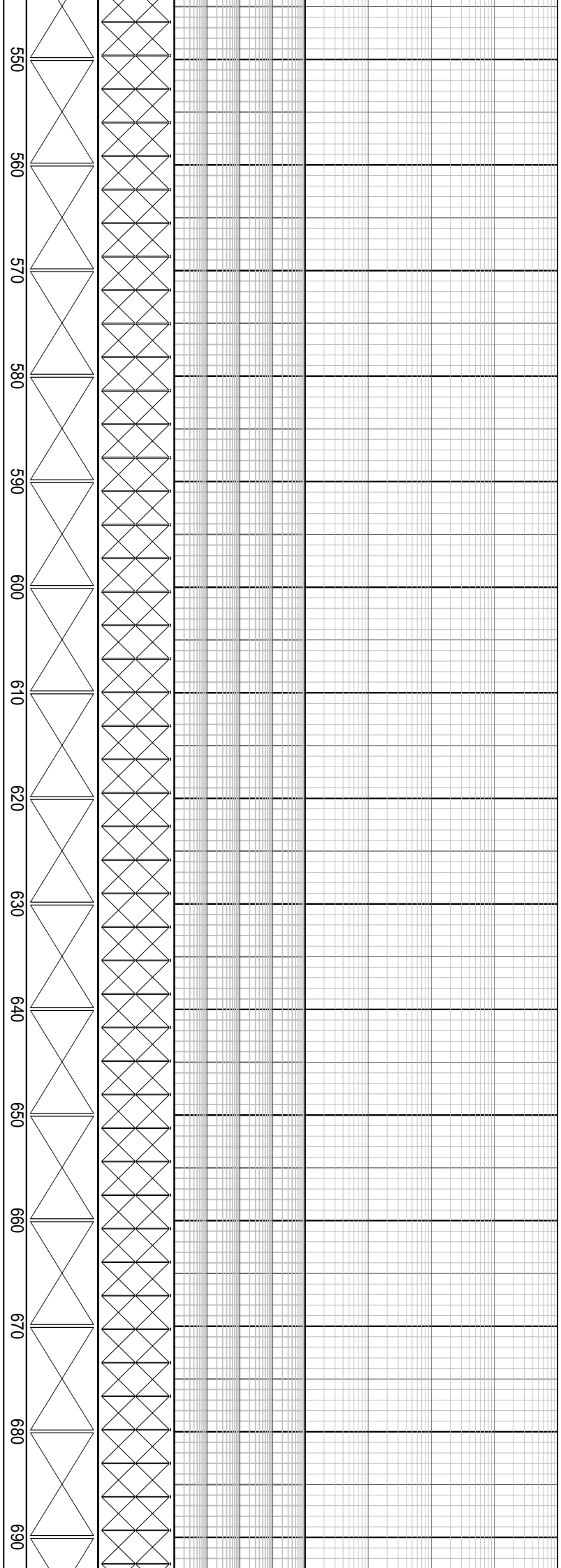
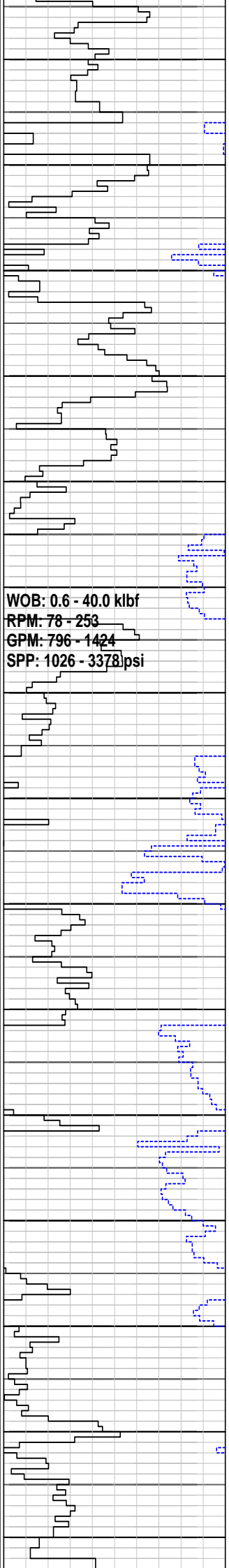
MD: 455.70m Inc: 8.55°
Azi: 155.30° TVD: 455.22m

MD: 484.37m Inc: 10.63°
Azi: 155.06° TVD: 483.49m

Drill with seawater and hi-vis sweeps
Returns to Seabed

MD: 513.87m Inc: 12.47°
Azi: 153.23° TVD: 512.39m

MD: 542.49m Inc: 15.01°



MD: 572.14m Inc: 17.86°
Azi: 149.10° TVD: 568.62m

Drill with seawater and hi-vis sweeps
Returns to Seabed

MD: 601.14m Inc: 20.61°
Azi: 150.86° TVD: 596.00m

MD: 629.94m Inc: 23.75°
Azi: 150.85° TVD: 622.67m

MD: 657.35m Inc: 27.63°
Azi: 152.02° TVD: 647.36m

MD: 686.15m Inc: 28.92°
Azi: 155.03° TVD: 672.72m

WOB: 2.7 - 43.6 klf
RPM: 84 - 273
GPM: 851 - 1506
SPP: 1112 - 3677 psi

WOB: 0.3 - 31.7 klf
RPM: 0 - 122
GPM: 924 - 1283
SPP: 2082 - 3735 psi

700
710
720
730
740
750
760
770
780
790
800
810
820
830
840

Drill with seawater and hi-vis sweeps
Returns to Seabed

MD: 714.52m Inc: 30.23°
Azi: 156.28° TVD: 697.40m

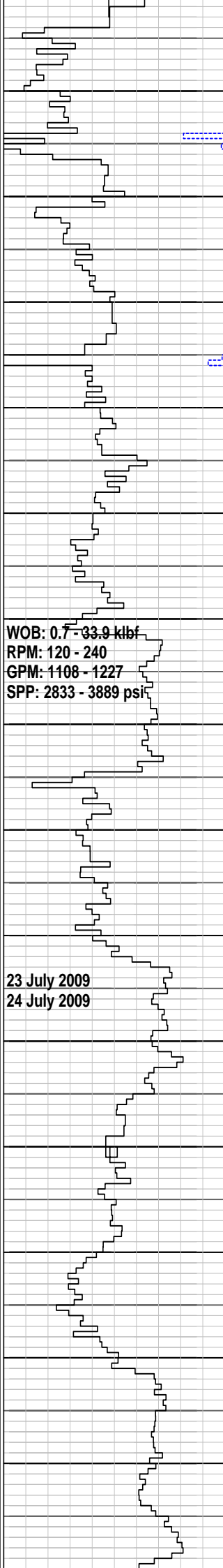
MD: 742.58m Inc: 31.04°
Azi: 156.67° TVD: 721.54m

MD: 771.54m Inc: 32.48°
Azi: 157.40° TVD: 746.17m

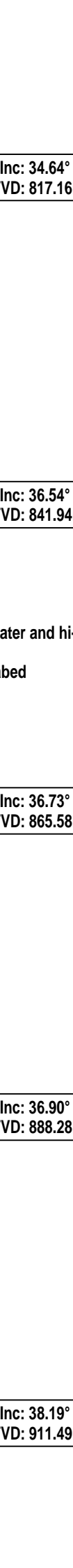
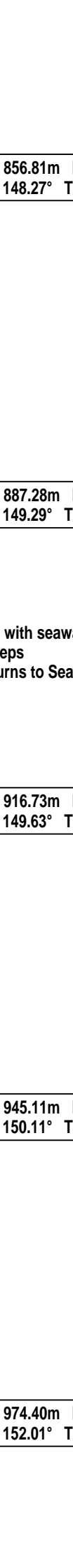
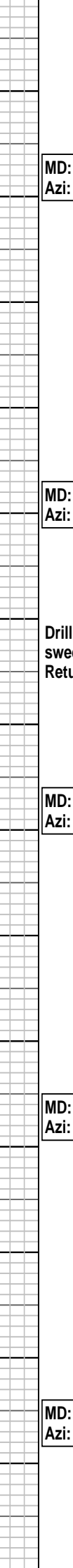
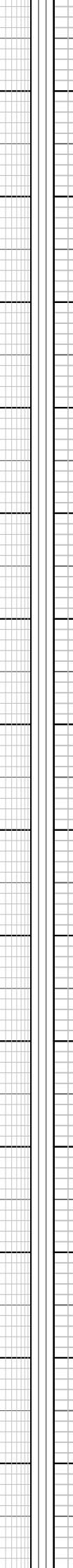
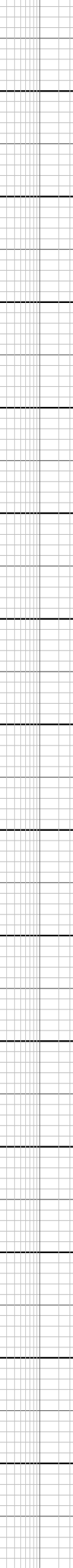
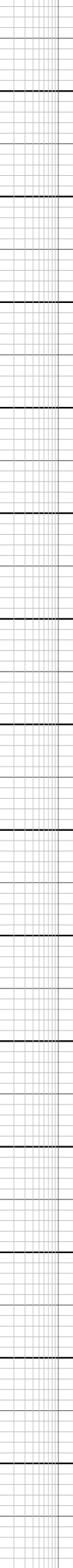
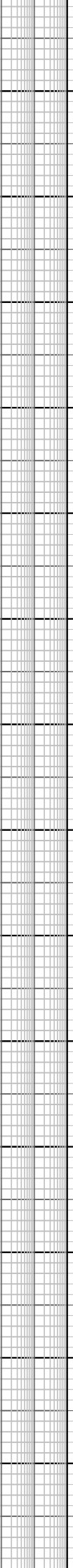
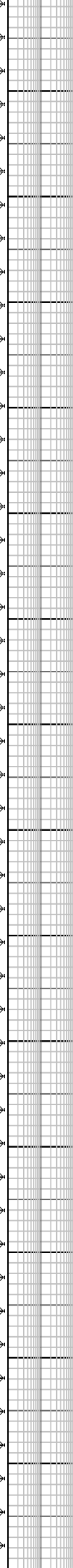
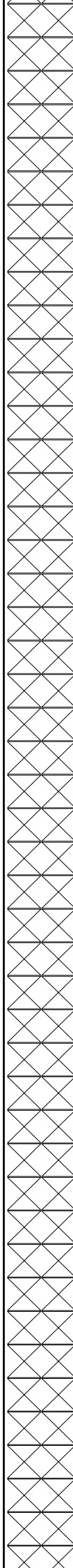
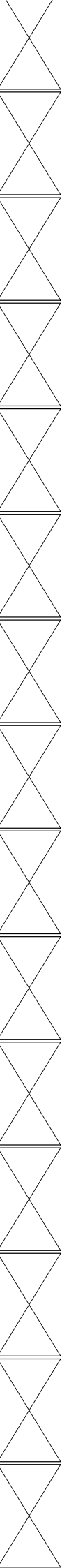
Drill with seawater and hi-vis sweeps
Returns to Seabed

MD: 799.88m Inc: 33.24°
Azi: 154.47° TVD: 769.98m

MD: 828.16m Inc: 34.09°
Azi: 149.77° TVD: 793.52m



850
860
870
880
890
900
910
920
930
940
950
960
970
980
990



MD: 856.81m Inc: 34.64°
Azi: 148.27° TVD: 817.16m

MD: 887.28m Inc: 36.54°
Azi: 149.29° TVD: 841.94m

Drill with seawater and hi-vis
sweeps
Returns to Seabed

MD: 916.73m Inc: 36.73°
Azi: 149.63° TVD: 865.58m

MD: 945.11m Inc: 36.90°
Azi: 150.11° TVD: 888.28m

MD: 974.40m Inc: 38.19°
Azi: 152.01° TVD: 911.49m

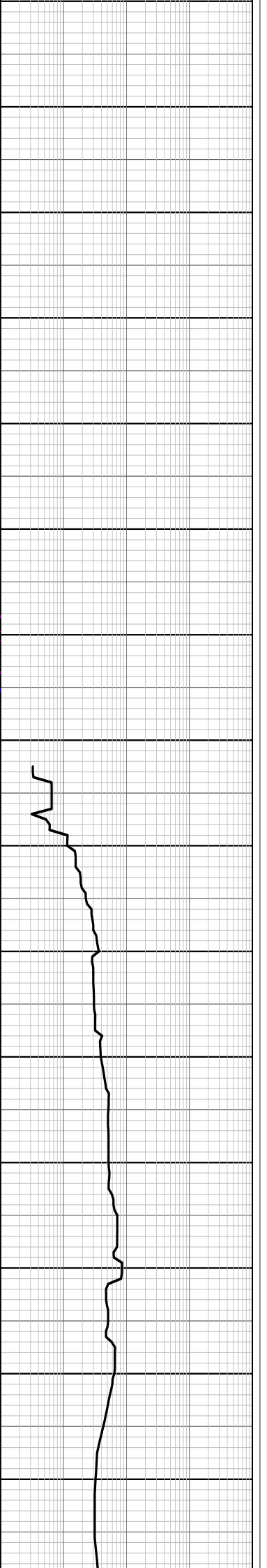
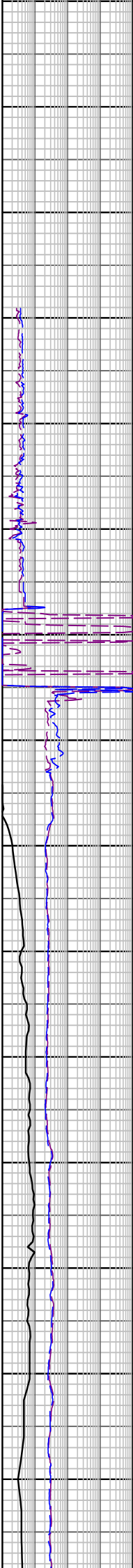
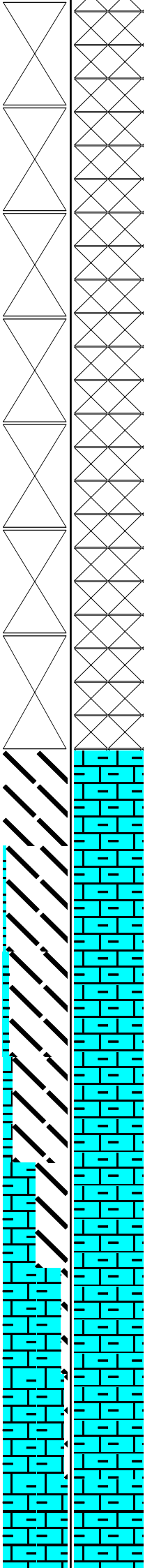
WOB: 0.3 - 45.2 klb
 RPM: 128 - 240
 GPM: 1164 - 1192
 SPP: 3160 - 3760 psi

24 July 2009
 27 July 2009

NB3 Smith MSI 519
 311mm (12-1/4")
 Jets: 2x14,5x15
 Depth In: 1061.7m
 Depth Out: 2918.0m
 Drilled: 1856.3m in 26.9hrs
 Grade: 1-2-CT-S-X-1/8-FC-PR

WOB: 5.9 - 44.1 klb
 RPM: 84 - 121
 GPM: 805 - 1130
 SPP: 1378 - 2441 psi

90
1000
1010
1020
1030
1040
1050
1060
1070
1080
1090
1100
1110
1120
1130



Drill with seawater and hi-vis sweeps
 Returns to Seabed

MD: 1003.53m Inc: 37.48°
 Azi: 150.94° TVD: 934.50m

MD: 1032.80m Inc: 36.51°
 Azi: 151.41° TVD: 957.88m

Set 340mm (13-3/8") casing
 shoe at 1056.6mMDRT

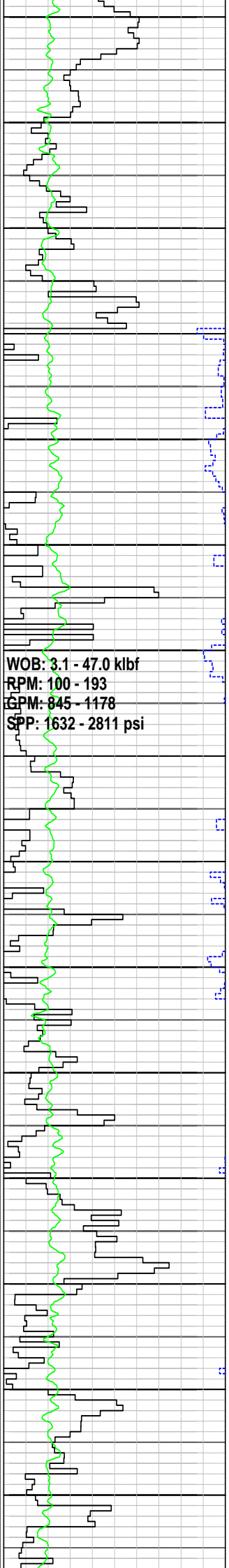
MD: 1060.99m Inc: 36.98°
 Azi: 151.69° TVD: 984.29m

MARL: dom olv gry, com m lt
 gry-m gry, sft frm, occ mod
 hd, sbbly-blky, abd calc cly,
 tr carb mat, tr v f sd

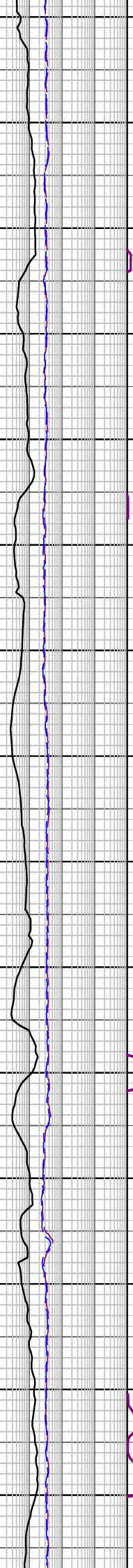
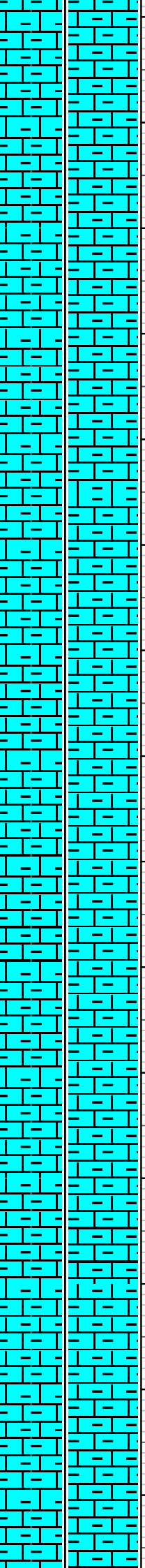
MW 1.08sg FV 48
 PV/YP 11/19 Gels 6/7/8
 Sol% 5.1 CI 49k

MD: 1118.79m Inc: 38.76°
 Azi: 150.48° TVD: 1029.91m

MARL: dom olv gry, com m lt
 gry-m gry, frm-mod hd,
 sbbly-blky, abd calc cly, tr
 carb mat



1140
1150
1160
1170
1180
1190
1200
1210
1220
1230
1240
1250
1260
1270
1280



MD: 1148.08m Inc: 38.35°
Azi: 150.07° TVD: 1052.82m

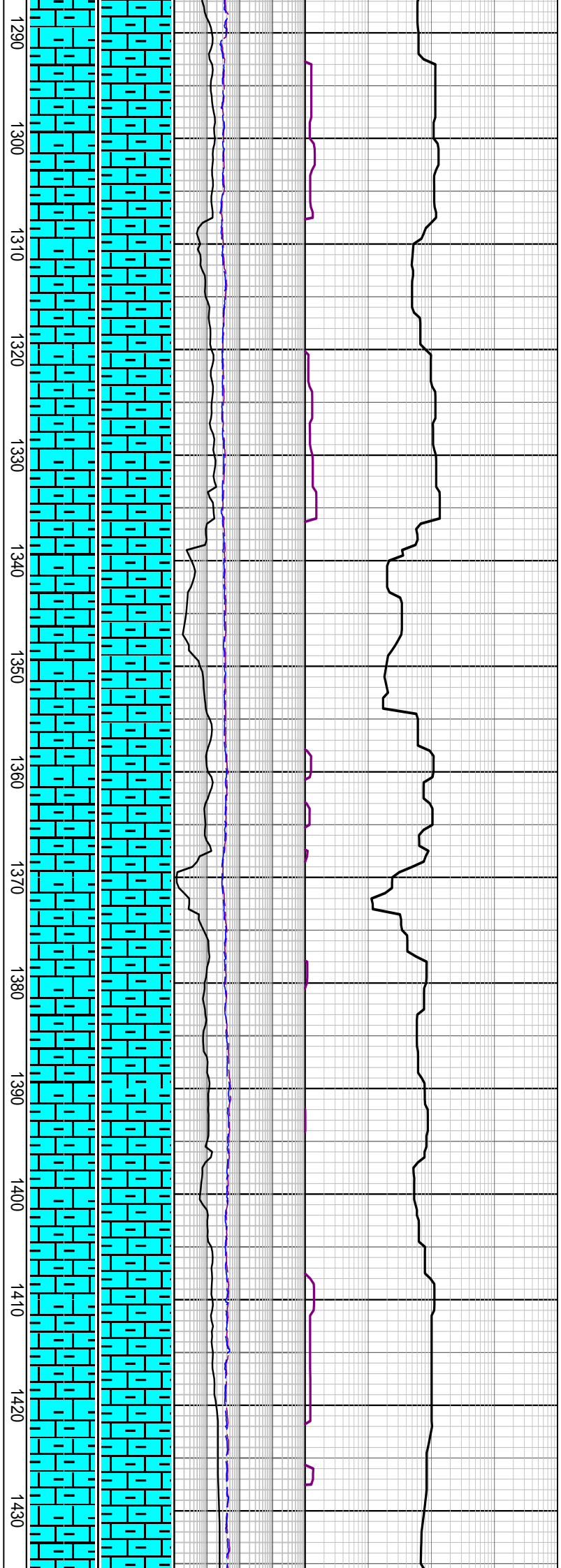
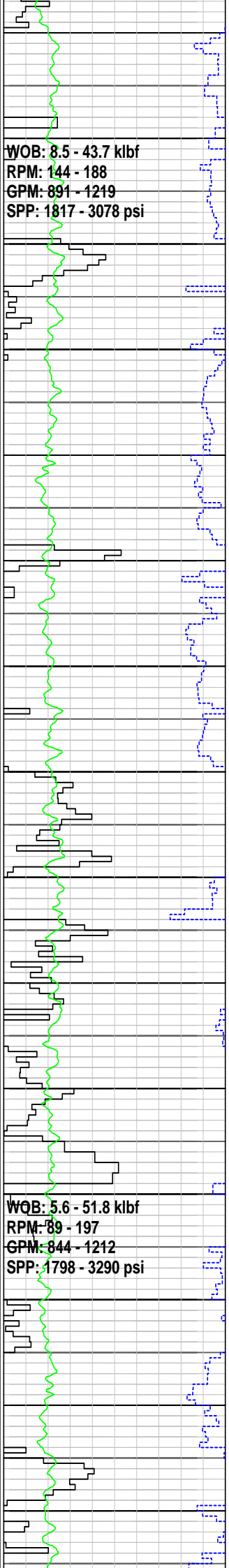
MD: 1176.13m Inc: 36.43°
Azi: 148.80° TVD: 1075.11m

MARL: dom olv gry, com m lt gry-m gry, frm-mod hd, sbbiky-blky, abd calc cly, tr carb mat

MD: 1205.74m Inc: 35.45°
Azi: 148.06° TVD: 1099.08m

MD: 1234.23m Inc: 35.74°
Azi: 147.30° TVD: 1122.25m

MARL: dom olv gry, occ v lt gry-m gry, frm-mod hd, sbbiky-blky, abd calc cly, tr sil slt, tr blk lit frag, tr carb spks



MD: 1292.39m Inc: 35.16°
 Azi: 148.01° TVD: 1169.62m

MD: 1320.99m Inc: 34.65°
 Azi: 148.19° TVD: 1189.25m

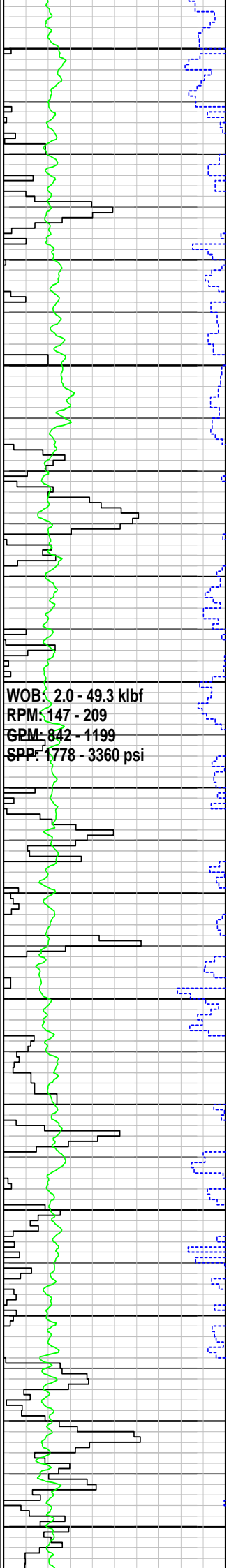
MARL: dom lt olv gry-olv gry,
 occ m gry, frm-mod hd, sft
 i/p, sbblky-blky, abd calc cly,
 tr sil slt, tr blk lit frag, tr carb
 spks

MD: 1350.15m Inc: 35.16°
 Azi: 147.62° TVD: 1213.17m

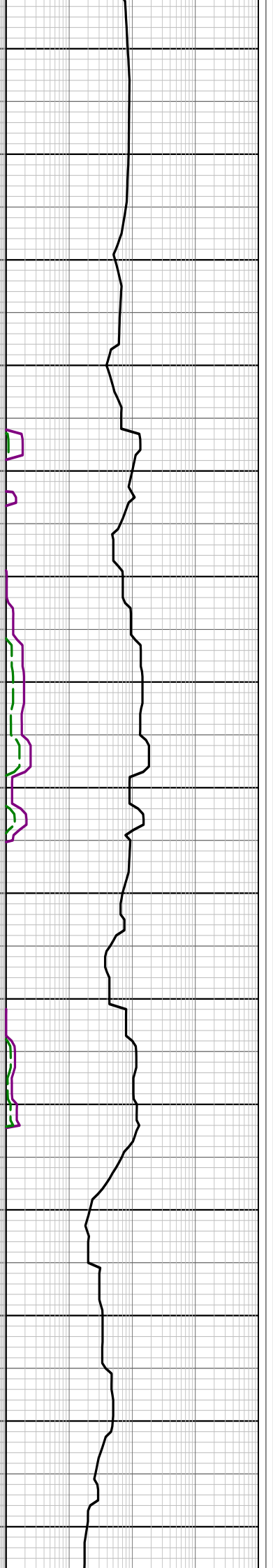
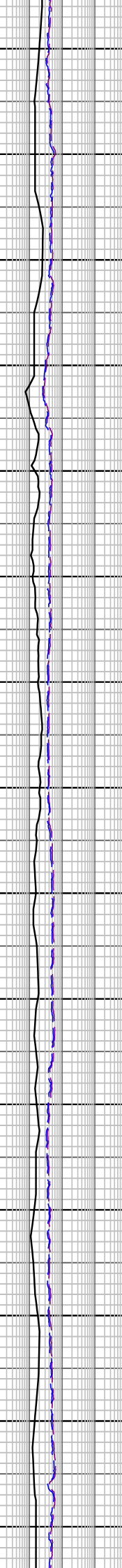
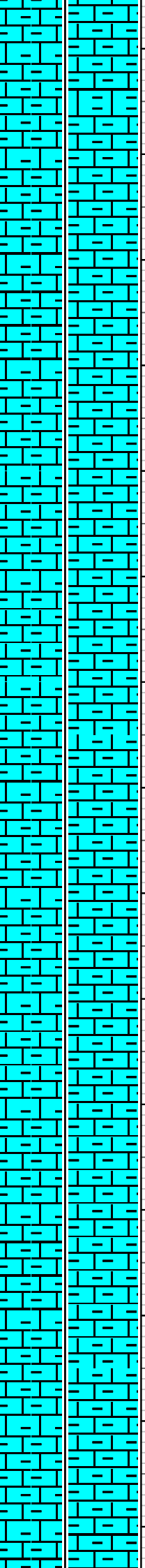
MD: 1379.29m Inc: 34.46°
 Azi: 147.45° TVD: 1237.10m

MARL: dom lt olv gry-olv gry,
 occ m gry, frm-mod hd, dom
 mod hd, sbblky-blky, abd
 calc cly, tr sil slt, tr-rr carb
 mat

MD: 1407.09m Inc: 32.86°
 Azi: 146.85° TVD: 1260.24m



1440
1450
1460
1470
1480
1490
1500
1510
1520
1530
1540
1550
1560
1570
1580



MD: 1436.33m Inc: 32.04°
 Azi: 146.56° TVD: 1284.91m

MARL: dom lt olv gry-olv gry,
 occ m gry, frm-mod hd, dom
 mod hd, sbblky-blky, abd
 calc cly, tr sil slt, tr-rr carb
 mat

MD: 1465.22m Inc: 31.37°
 Azi: 147.89° TVD: 1309.49m

MD: 1493.86m Inc: 32.99°
 Azi: 152.10° TVD: 1333.72m

MARL: dom m gry-olv gry,
 occ m lt gry, frm-mod hd,
 dom mod hd, sbblky-blky,
 abd calc cly, tr sil slt, tr-rr
 carb mat

MD: 1522.57m Inc: 33.53°
 Azi: 156.05° TVD: 1357.74m

MD: 1551.08m Inc: 33.73°
 Azi: 156.30° TVD: 1381.48m

MARL: dom m gry-olv gry,
 occ m lt gry, frm-mod hd,
 dom mod hd, sbblky-blky,
 abd calc cly, tr sil slt, tr-rr
 carb mat

MD: 1579.74m Inc: 33.84°
 Azi: 153.27° TVD: 1405.29m

WOB: 2.1 - 50.6 klbf
RPM: 126 - 213
GPM: 751 - 1203
SPP: 1827 - 3460 psi

WOB: 5.9 - 49.1 klbf
RPM: 0 - 210
GPM: 860 - 1243
SPP: 2264 - 4122 psi

1590
1600
1610
1620
1630
1640
1650
1660
1670
1680
1690
1700
1710
1720
1730

MD: 1608.46m Inc: 35.27°
Azi: 150.47° TVD: 1428.95m

MARL: dom m gry-olv gry,
com m lt gry, frm-mod hd,
dom mod hd, sbblky-blky,
abd calc cly, tr sil slt, tr-rr
carb mat

MD: 1637.45m Inc: 36.72°
Azi: 150.18° TVD: 1452.40m

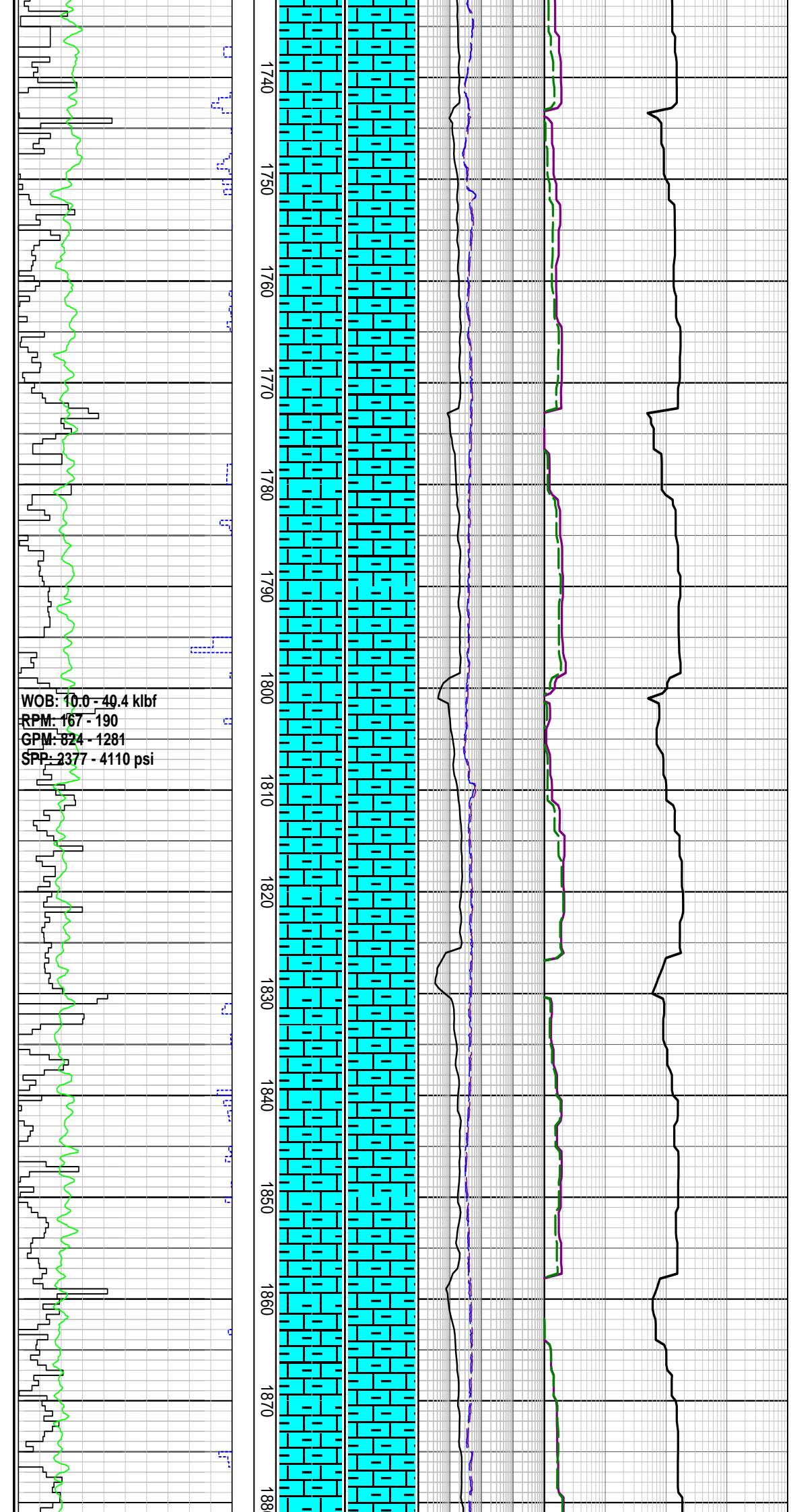
MD: 1666.26m Inc: 36.12°
Azi: 150.25° TVD: 1475.59m

MARL: dom m gry-olv gry,
com m lt gry, frm-mod hd,
dom mod hd, sbblky-blky,
abd calc cly, tr sil slt, tr-rr
carb mat

MD: 1694.89m Inc: 39.06°
Azi: 149.72° TVD: 1498.72m

MD: 1723.86m Inc: 36.07°
Azi: 149.77° TVD: 1522.14m

MARL: dom m lt gry-lt olv



gry, occ m gry, frm-mod hd, dom mod hd, sbblky-blky, 25-30% calc cly, tr sil slt, tr-rr carb mat

MD: 1753.17m Inc: 36.60°
 Azi: 149.91° TVD: 1545.75m

MD: 1781.25m Inc: 36.45°
 Azi: 149.35° TVD: 1568.32m

MARL: dom m gry-olv gry, m lt gry, sft-frm, occ mod hd, sbblky-blky, 30% calc cly, tr calc slt, tr v f qtz grn, tr carb spks, tr blk lith

MD: 1810.10m Inc: 36.88°
 Azi: 150.13° TVD: 1591.46m

MD: 1839.26m Inc: 36.41°
 Azi: 151.48° TVD: 1614.85m

MARL: dom m gry-olv gry, m lt gry, sft-frm, occ mod hd, sbblky-blky, 30% calc cly, tr calc slt, tr v f qtz grn, tr carb spks, tr blk lith

MD: 1868.17m Inc: 36.44°
 Azi: 151.16° TVD: 1638.12m

WOB: 10 - 40 klb
RPM: 147 - 196
GPM: 810 - 1161
SPP: 2617 - 4254 psi

WOB: 10.9 - 38.2 klb
RPM: 136 - 205
GPM: 1145 - 1182
SPP: 4063 - 4378 psi

1890
1900
1910
1920
1930
1940
1950
1960
1970
1980
1990
2000
2010
2020
21

MD: 1896.82m Inc: 36.54°
Azi: 153.07° TVD: 1661.15m

MARL: dom m gry-olv gry, m
lt gry, sft frm, occ mod hd,
sbbiky-blky, 25-30% calc cly,
tr calc slt, tr v f qtz grn, tr
carb spks, tr blk lith

MD: 1926.08m Inc: 36.62°
Azi: 152.97° TVD: 1684.65m

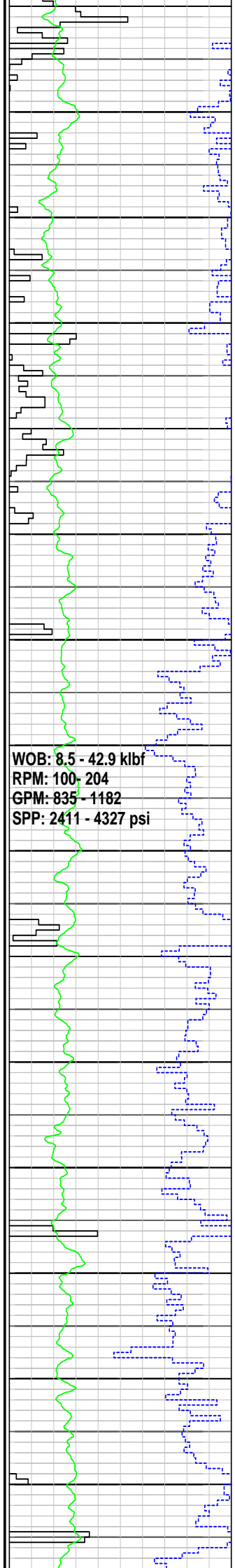
MD: 1954.85m Inc: 36.48°
Azi: 152.04° TVD: 1707.76m

MARL: dom m gry-olv gry, m
lt gry, sft frm, occ mod hd,
sbbiky-blky, 25-30% calc cly,
tr calc slt, tr v f qtz grn, tr pyr,
tr carb spks, tr blk lith

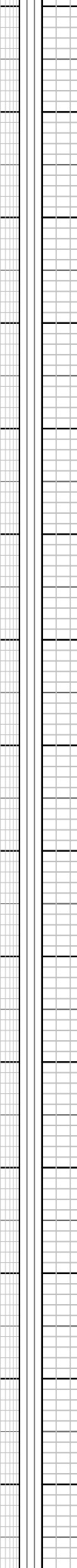
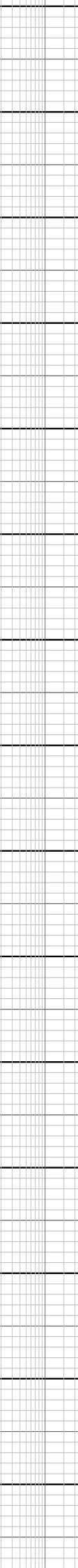
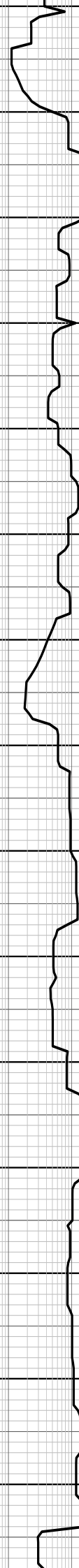
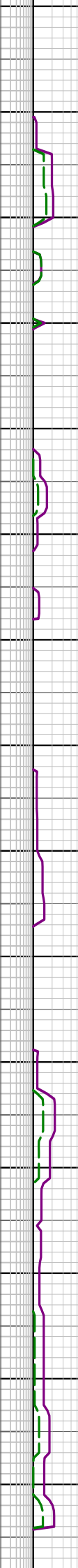
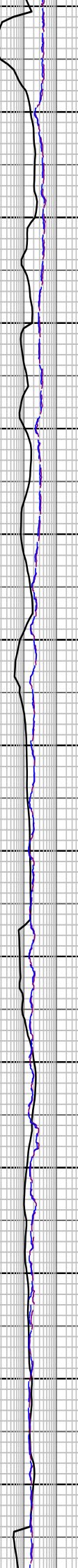
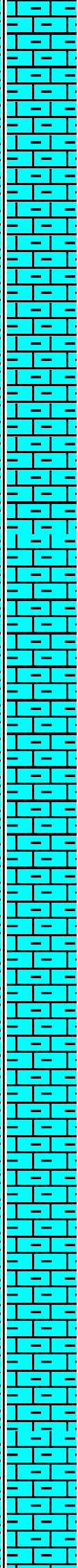
MD: 1983.67m Inc: 36.20°
Azi: 151.44° TVD: 1730.98m

MD: 2012.91m Inc: 36.92°
Azi: 150.95° TVD: 1754.47m

MARL: dom m gry, lt olv
gry-olv gry, occ m lt gry,
sft frm, occ mod hd,
sbbiky-blky, 25-30% calc cly,
tr calc slt, tr pyr, tr carb spks



2030
2040
2050
2060
2070
2080
2090
2100
2110
2120
2130
2140
2150
2160
2170



tr blk lith

MD: 2041.28m Inc: 36.11°
 Azi: 150.52° TVD: 1777.26m

MD: 2070.25m Inc: 36.28°
 Azi: 150.15° TVD: 1800.65m

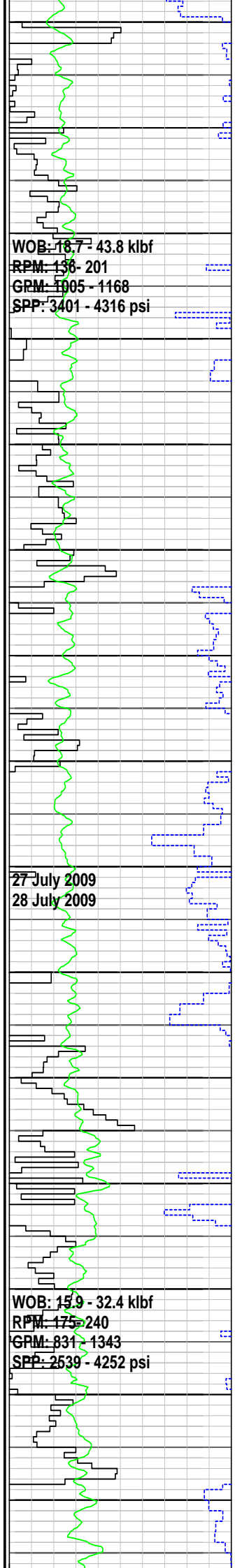
MARL: dom m gry, lt olv gry-olv gry, occ m lt gry, sft frm, occ mod hd, sbblky-blky, 25-30% calc cly, tr calc slt, tr pyr, tr carb spks, tr blk lith

MD: 2099.29m Inc: 36.98°
 Azi: 149.86° TVD: 1823.95m

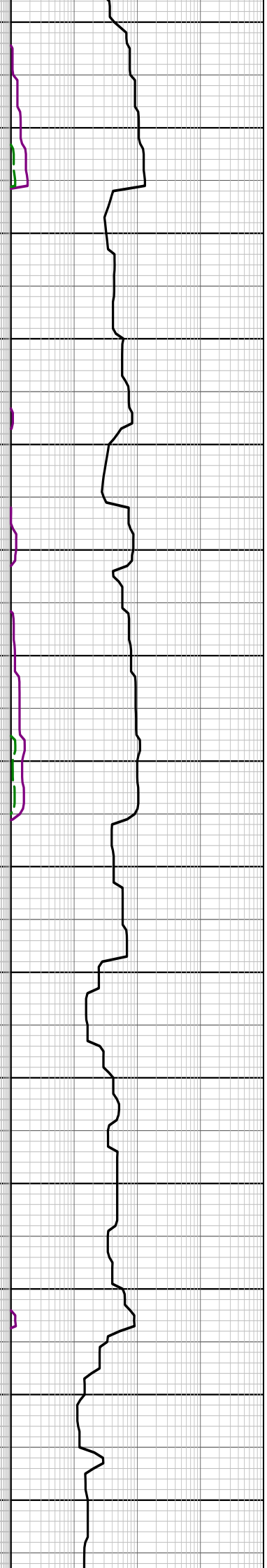
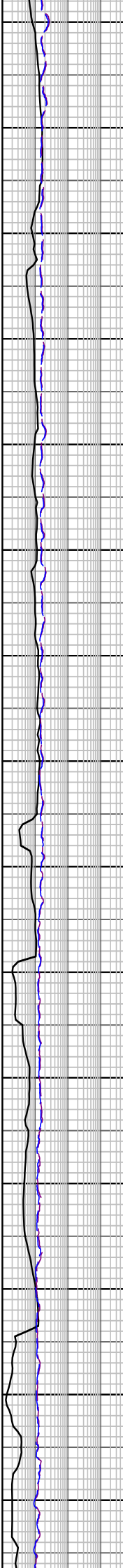
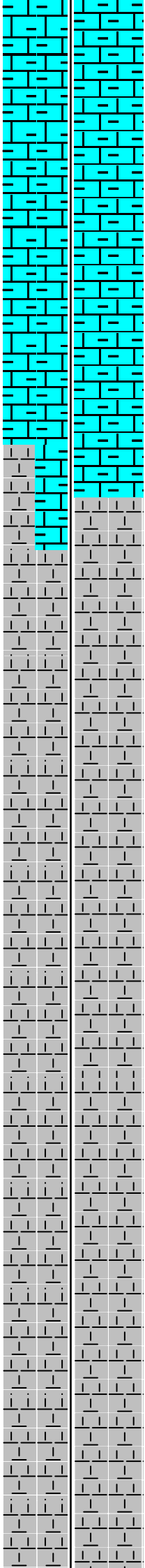
MD: 2127.60m Inc: 37.51°
 Azi: 149.66° TVD: 1846.48m

MD: 2156.62m Inc: 37.88°
 Azi: 149.51° TVD: 1869.44m

MARL: dom pl yelsh brn, olv gry, frm-mod hd, fri i/p, dom mod hd, sbblky-blky, 30-35% calc cly, tr calc slt, tr pyr, tr carb spks, tr blk lith



2180
2190
2200
2210
2220
2230
2240
2250
2260
2270
2280
2290
2300
2310
2320



MD: 2184.65m Inc: 38.11°
 Azi: 149.41° TVD: 1891.53m

MD: 2213.84m Inc: 38.43°
 Azi: 149.62° TVD: 1914.45m

CALCAREOUS CLAYSTONE:
 lt gry-m dk gry, mod hd, frm
 i/p, sbblky-blky, 75% calc cly,
 mn sil slt, tr pyr, tr foram, tr
 glauc

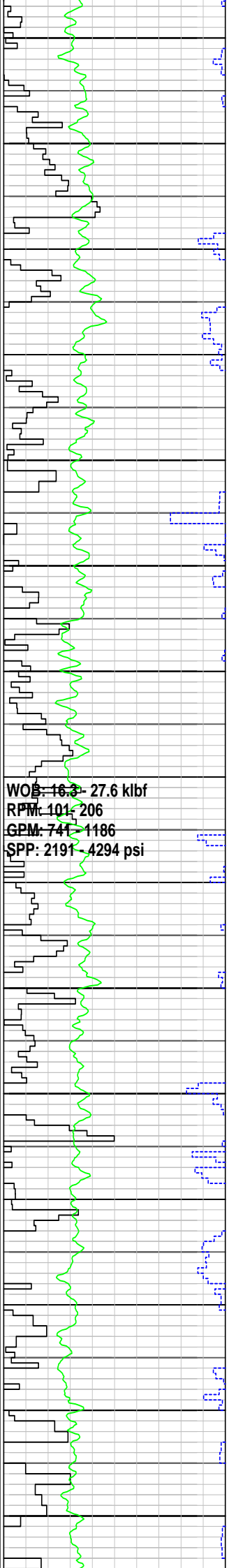
MD: 2242.40m Inc: 38.29°
 Azi: 150.80° TVD: 1936.84m

MW 1.15sg FV 52
 PV/YP 16/26 Gels 9/11/13
 Sol% 6.3 CI 38k

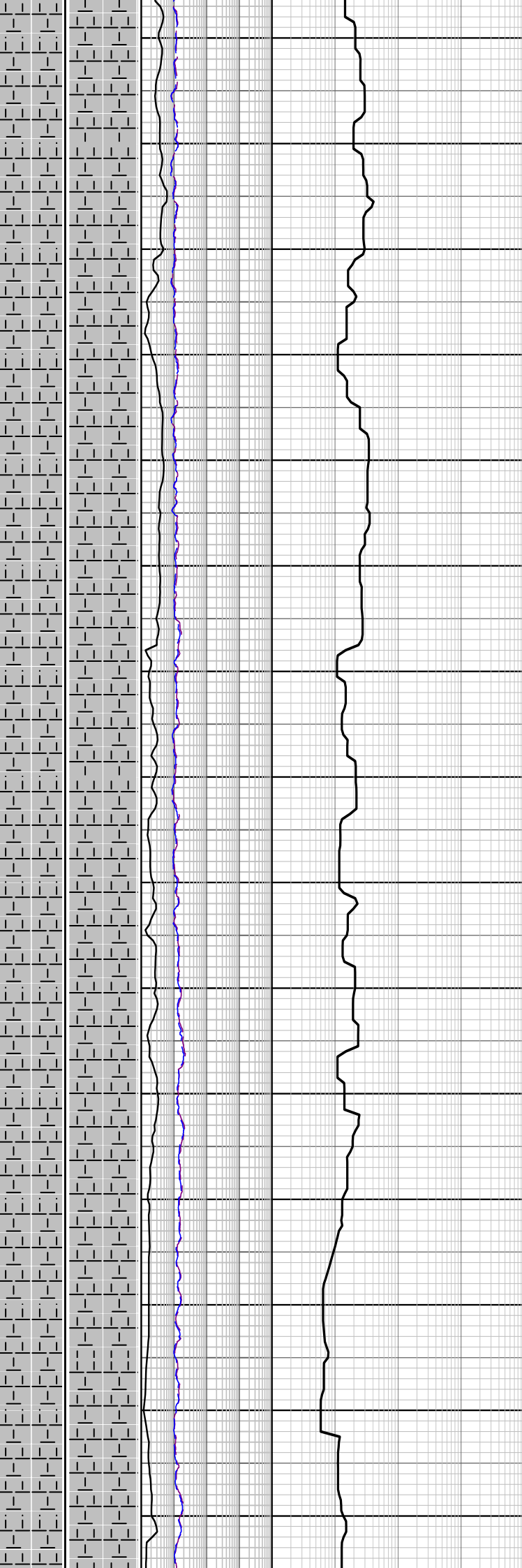
MD: 2270.15m Inc: 37.73°
 Azi: 151.59° TVD: 1958.71m

CALCAREOUS CLAYSTONE:
 m lt gry-m gry, sft-mod hd,
 sbblky-blky, 60% calc cly,
 mn sil slt, tr pyr, tr foram, tr
 glauc

MD: 2299.33m Inc: 37.92°
 Azi: 152.77° TVD: 1981.76m



2330
2340
2350
2360
2370
2380
2390
2400
2410
2420
2430
2440
2450
2460
2470



MD: 2328.31m Inc: 37.50°
 Azi: 152.72° TVD: 2004.69m

CALCAREOUS CLAYSTONE:
 m lt gry-m gry, sft-mod hd,
 sbbkly-blky, 60% calc cly,
 mnr sil slt, tr pyr, tr foram, tr
 glauc

MD: 2356.86m Inc: 37.14°
 Azi: 152.63° TVD: 2027.39m

MD: 2385.32m Inc: 36.95°
 Azi: 152.51° TVD: 2050.11m

CALCAREOUS CLAYSTONE:
 m lt gry-m gry, sft-mod hd,
 sbbkly-blky, 60% calc cly, tr
 sil slt, tr pyr, tr foram, tr glauc

MD: 2414.74m Inc: 37.37°
 Azi: 152.25° TVD: 2073.55m

MD: 2443.40m Inc: 37.46°
 Azi: 152.07° TVD: 2096.32m

CALCAREOUS CLAYSTONE:
 m lt gry-m gry, sft-mod hd,
 sbbkly-blky, 60% calc cly, tr
 sil slt, tr pyr, tr foram, tr glauc

MD: 2472.38m Inc: 37.14°
 Azi: 152.42° TVD: 2110.27m

CALCAREOUS CLAYSTONE:
dom m dk gry, sft-mod hd,
sbbiky-blky, 60% calc cly,
tr-abd glauc, mnr slt, tr foram

MD: 2501.29m Inc: 37.25°
Azi: 152.68° TVD: 2142.40m

SANDSTONE: trnsl, wh-v lt
gy, fri, m-crs, p srt,
ang-sbang-sbrnnd, tr calc
mtrx, 10% glauc, tr pyr, n/s

SILTSTONE: m yel brn, lt
olv-lt olv blk, sft-frn,
blky-sbbiky, 10% sil cly, tr
pyr, tr c, rr-mnr glauc

MD: 2530.46m Inc: 36.72°
Azi: 153.05° TVD: 2165.70m

CALCAREOUS CLAYSTONE:
dom m dk gry, sft-mod hd,
sbbiky-blky, 60% calc cly,
tr-abd glauc, mnr slt, tr foram

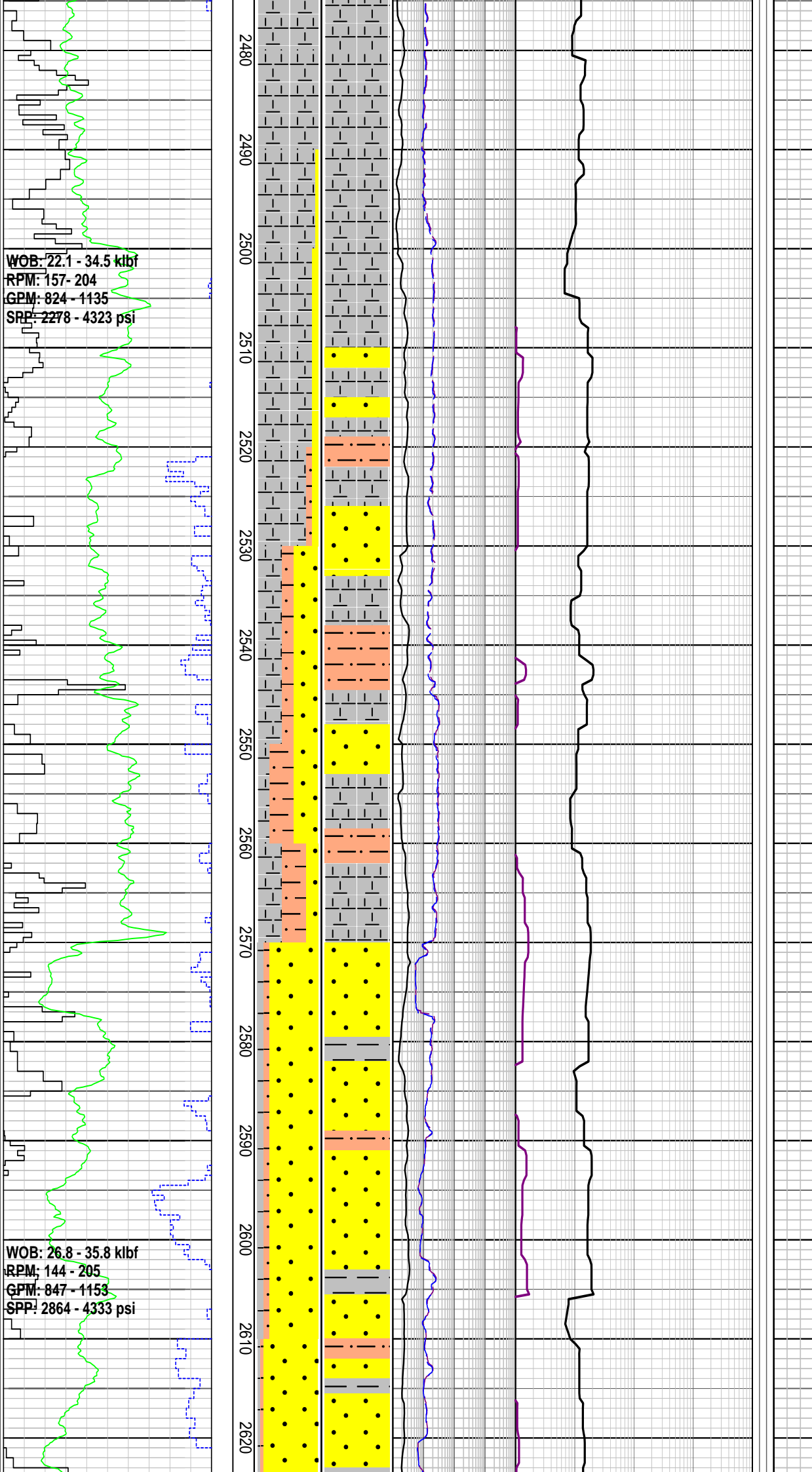
MD: 2559.09m Inc: 37.34°
Azi: 152.33° TVD: 2188.55m

SANDSTONE: clr-trnsl, yelsh
gry, lse, m-crs, dom crs,
p-mod srt, ang-sbang,
elong-sph, tr glauc, tr pyr, gd
inf por, n/s

MD: 2587.53m Inc: 37.75°
Azi: 151.79° TVD: 2211.11m

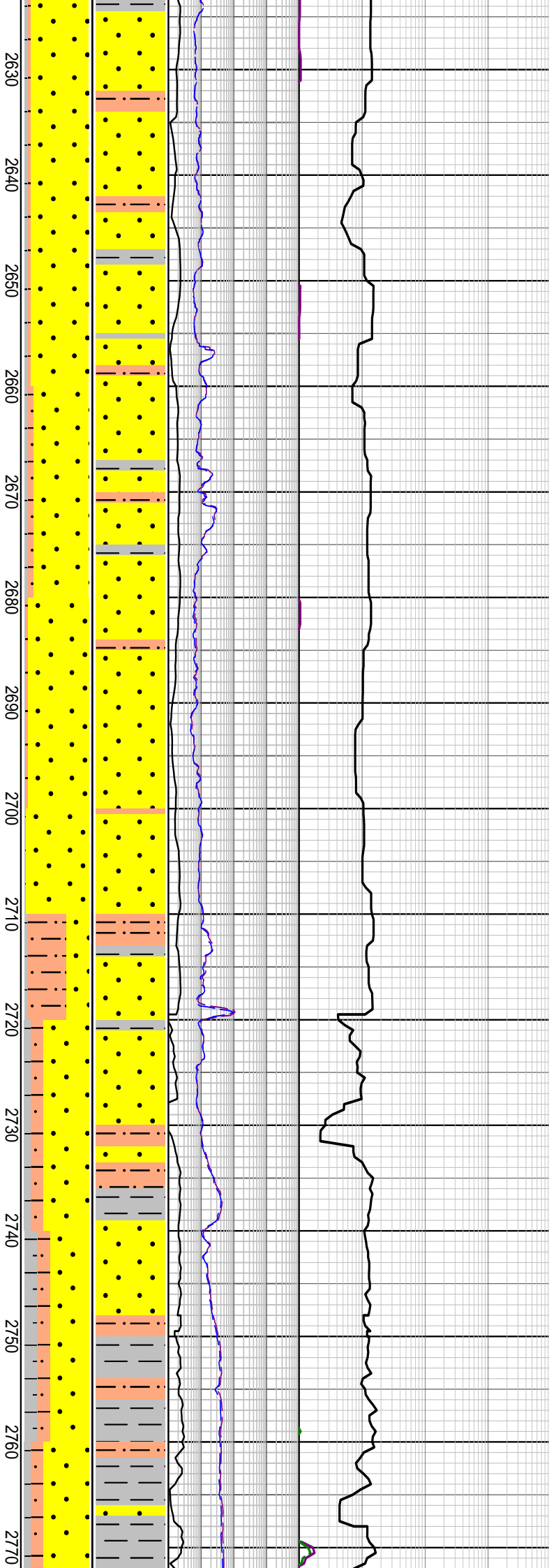
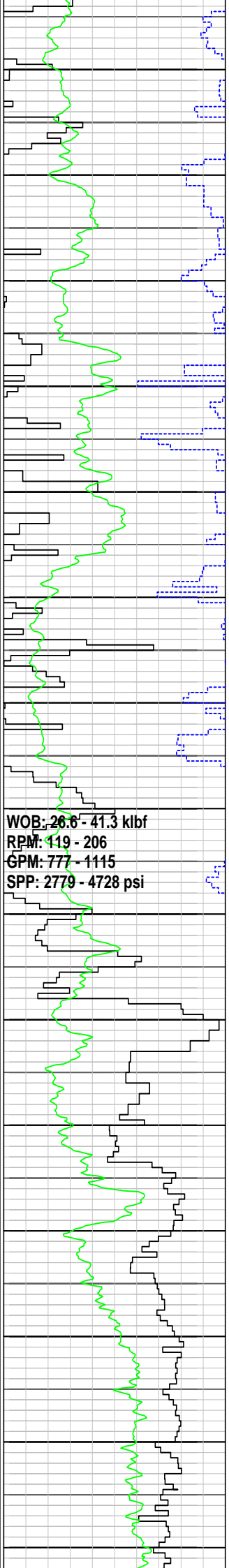
CLAYSTONE: lt gry-m dk gry,
m blysh gry, occ grnsh gry,
sft-mod hd, sbbiky-blky, mnr
calc cly, rr calc slt, mnr sil
slt, tr pyr, tr glauc, tr carb
mat

MD: 2616.24m Inc: 37.16°
Azi: 150.34° TVD: 2233.89m



WOB: 22.1 - 34.5 kbf
RPM: 157 - 204
GPM: 824 - 1135
SPP: 2278 - 4323 psi

WOB: 26.8 - 35.8 kbf
RPM: 144 - 205
GPM: 847 - 1153
SPP: 2864 - 4333 psi



SANDSTONE: clr-trnsl, yelsh gry, lse, m-crs, dom crs, p-mod srt, ang-sbang, elong-sph, tr glauc, tr pyr, gd inf por, n/s

MD: 2644.78m Inc: 37.10°
 Azi: 148.68° TVD: 2256.65m

SILTSTONE: m yel brn, lt olv gry-olv blk gry, sft frm, blk-y-sbbkly, mnr sil cly, tr pyr, tr c, rr glauc

MD: 2674.04m Inc: 37.13°
 Azi: 147.37° TVD: 2279.98m

SANDSTONE: clr-trnsl, yelsh gry, lse, v f-v crs, dom crs, p-mod srt, sbang-rnnd, sli elong-sph, tr glauc, tr pyr, gd inf por, n/s

MD: 2703.21m Inc: 37.30°
 Azi: 145.69° TVD: 2303.21m

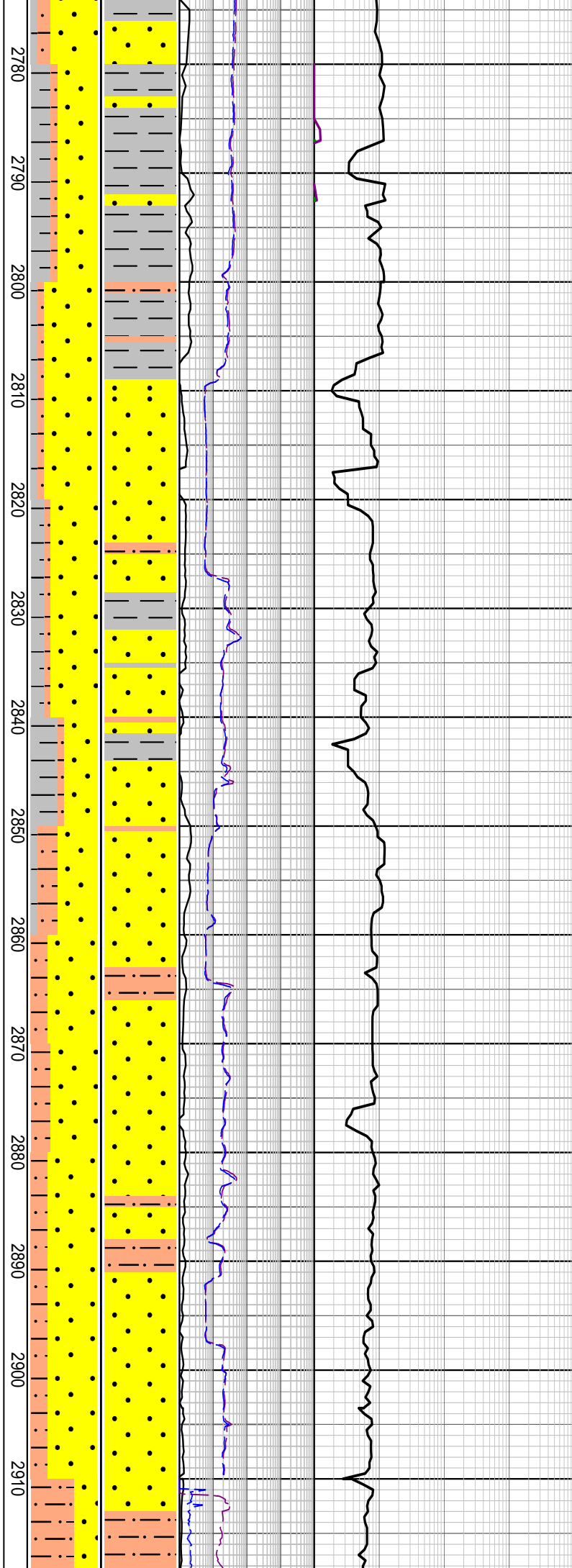
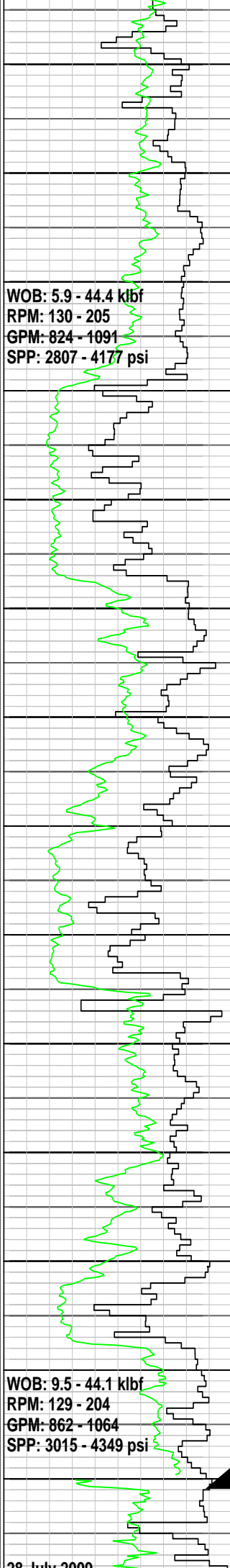
SILTSTONE: m yel brn, lt olv gry-olv blk, sft frm, sbbkly-blky, mnr sil cly, tr pyr, tr c, rr glauc

MD: 2732.96m Inc: 37.28°
 Azi: 143.89° TVD: 2326.88m

CLAYSTONE: m dk gry, blsh gry, occ gnsh gry, v sft-mod hd, sbbkly-blky, mnr calc cly, rr calc slt, mnr sil slt, tr pyr, tr glauc, tr carb mat

MD: 2760.70m Inc: 37.02°
 Azi: 141.64° TVD: 2348.99m

SANDSTONE: clr-trnsl, yelsh gry, lse, f-crs, p-mod srt, ang-sbang, tr glauc, tr pyr



ang-sbrndd, tr glauc, tr pyr, gd inf por

SILTSTONE: m brn gry, lt olv gry-olv blk, sft frm, sbblky-blky, mnr sil cly, tr pyr, tr c, rr glauc

MD: 2789.97m Inc: 36.48°
 Azi: 140.97° TVD: 2372.45m

CLAYSTONE: m dk gry, m brn gry, occ gnsh gry, v sft-mod hd, amor-sbblky, mnr calc cly, rr calc slit, mnr sil slit, tr pyr, occ tr glauc, tr carb mat

MD: 2819.09m Inc: 36.62°
 Azi: 142.39° TVD: 2395.84m

SANDSTONE: clr-trnsl, m dk gry-olv gry, lse, v f-v crs, p-mod srt, sbang-rnidd, tr glauc, tr pyr, tr glauc, gd inf por

MD: 2848.22m Inc: 36.88°
 Azi: 144.25° TVD: 2419.18m

SILTSTONE: m dk gry, brnsh gry, sft-mod hd, amor-blky, wl srt, sbang, mnr sil cly, tr pyr, tr c, rr glauc

MD: 2876.96m Inc: 37.06°
 Azi: 144.65° TVD: 2442.14m

SANDSTONE: clr-trnsl, trnsp, wh, lt gry, lse, v f-v crs, p-mod srt, sbang-sbrnidd, sli sph-elong, tr glauc, tr pyr

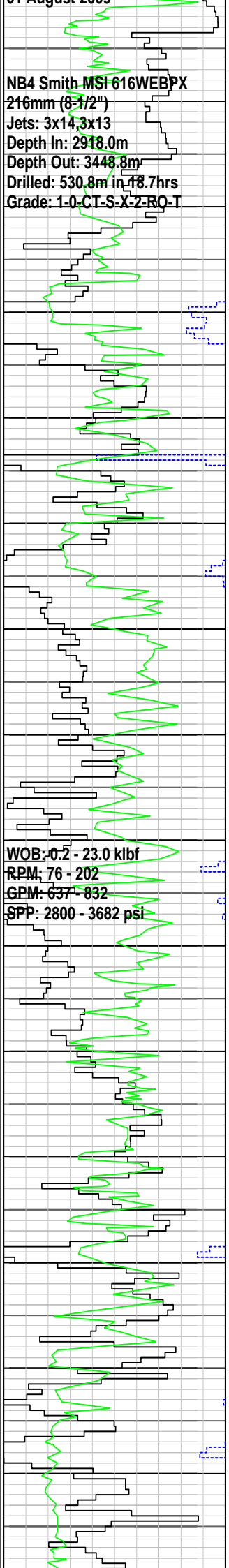
MW 1.15sg FV 51
 PV/YP 18/26 Gels 10/12/15
 Sol% 9.6 Cl 48k

Set 244mm (9-5/8") casing shoe at 2910.8mMDRT

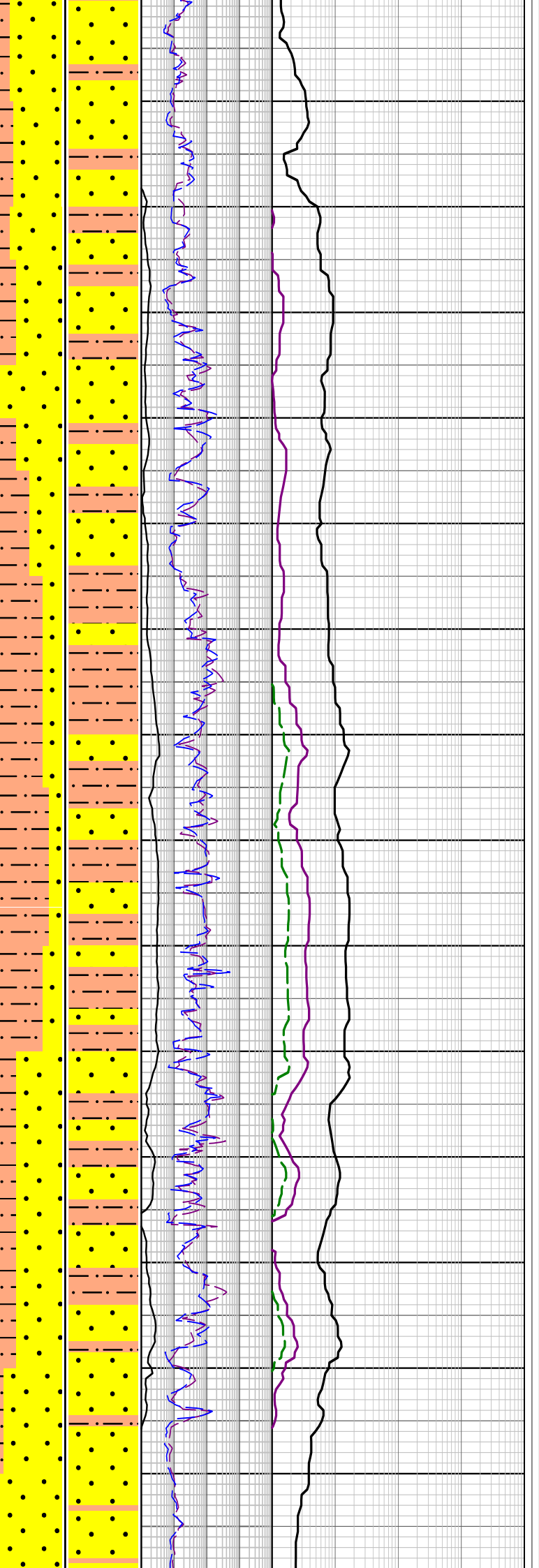
MD: 2916.00m Inc: 36.76°
 Azi: 147.69° TVD: 2473.60m

NB4 Smith MSF 616WEBPX
216mm (8-1/2")
Jets: 3x14, 3x13
Depth In: 2918.0m
Depth Out: 3448.8m
Drilled: 530.8m in 18.7hrs
Grade: 1-0-CT-S-X-2-RO-T

WOB: 0.2 - 23.0 klf
RPM: 76 - 202
GPM: 637 - 832
SPP: 2800 - 3682 psi



2930
2940
2950
2960
2970
2980
2990
3000
3010
3020
3030
3040
3050
3060



SANDSTONE: clr-trnsl, trnsp, wh, lt gry, lse, v f-v crs, p-mod srt, sbang-sbrnidd, sli spher-elong, tr glauc, tr pyr, tr glauc

MD: 2945.42m Inc: 37.01°
Azi: 148.10° TVD: 2497.10m

SILTSTONE: m dk gry, brnsh gry, sft-mod hd, amor-blky, wl srt, sbang, mnr sil cly, tr pyr, tr c, rr glauc

MD: 2974.04m Inc: 35.23°
Azi: 148.79° TVD: 2520.20m

SANDSTONE: trnsl, trnsp, lt-m lt gry, lse, sft, v f-v crs, mod srt, sbang-rnidd, sli spher-elong, tr pyr cmt, mnr wh-lt gry sil cly, tr pyr, pr vis por, n/s

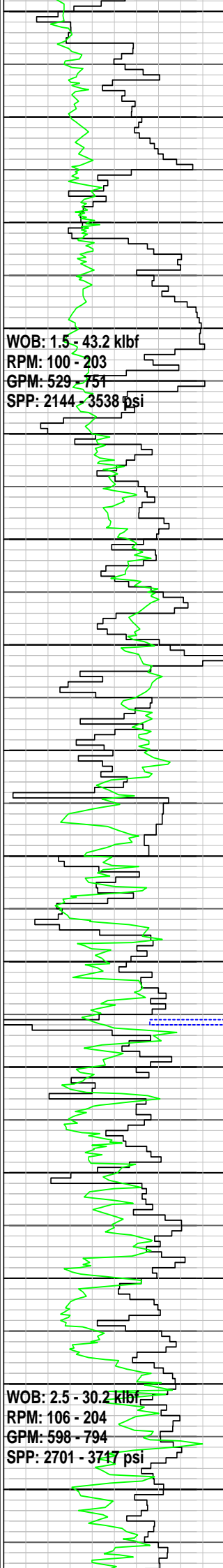
MD: 3002.43m Inc: 31.62°
Azi: 147.66° TVD: 2543.90m

SILTSTONE: dk gry, dk brnsh gry-brnsh blk, frm-mod hd, sbblky-blky, mnr sil cly, tr pyr, tr carb frag

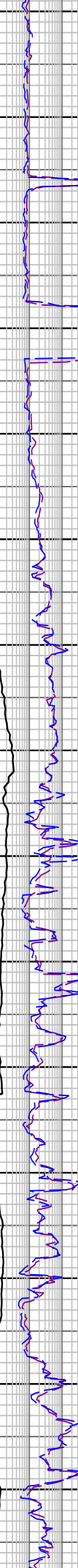
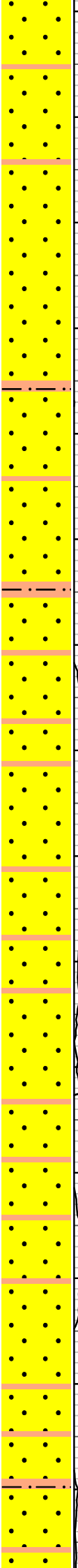
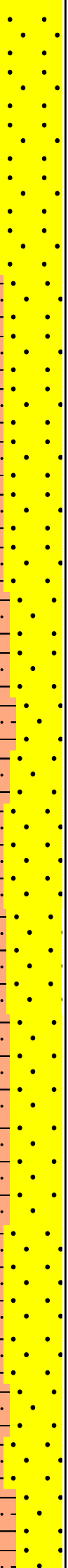
MD: 3031.89m Inc: 29.63°
Azi: 151.64° TVD: 2569.3m

SANDSTONE: clr-trnsp, lse, f-v crs, mod srt, sbang-rnidd, tr pyr, tr carb spks, f-gd inf por, n/s

MD: 3060.42m Inc: 33.83°
Azi: 159.35° TVD: 2593.57m



3070
3080
3090
3100
3110
3120
3130
3140
3150
3160
3170
3180
3190
3200
3210



SILTSTONE: dk gry, dk brnsh gry-brn blk, frm-mod hd, sbblky-blky, occ sb fis, mnr sil cly, tr pyr, tr carb frag

MD: 3090.15m Inc: 37.81°
Azi: 160.82° TVD: 2617.68m

SANDSTONE: trnsp, trnsl, v f-f, occ crs-v crs, mod srt, sbang-rnidd, tr carb spks, tr pyr, f-gd inf por, n/s

MD: 3118.97m Inc: 36.08°
Azi: 156.55° TVD: 2663.01m

SILTSTONE: m dk gry-dk brnsh gry, frm-mod hd, sbblky-blky, mnr sil cly, tr pyr, tr-rr carb frag

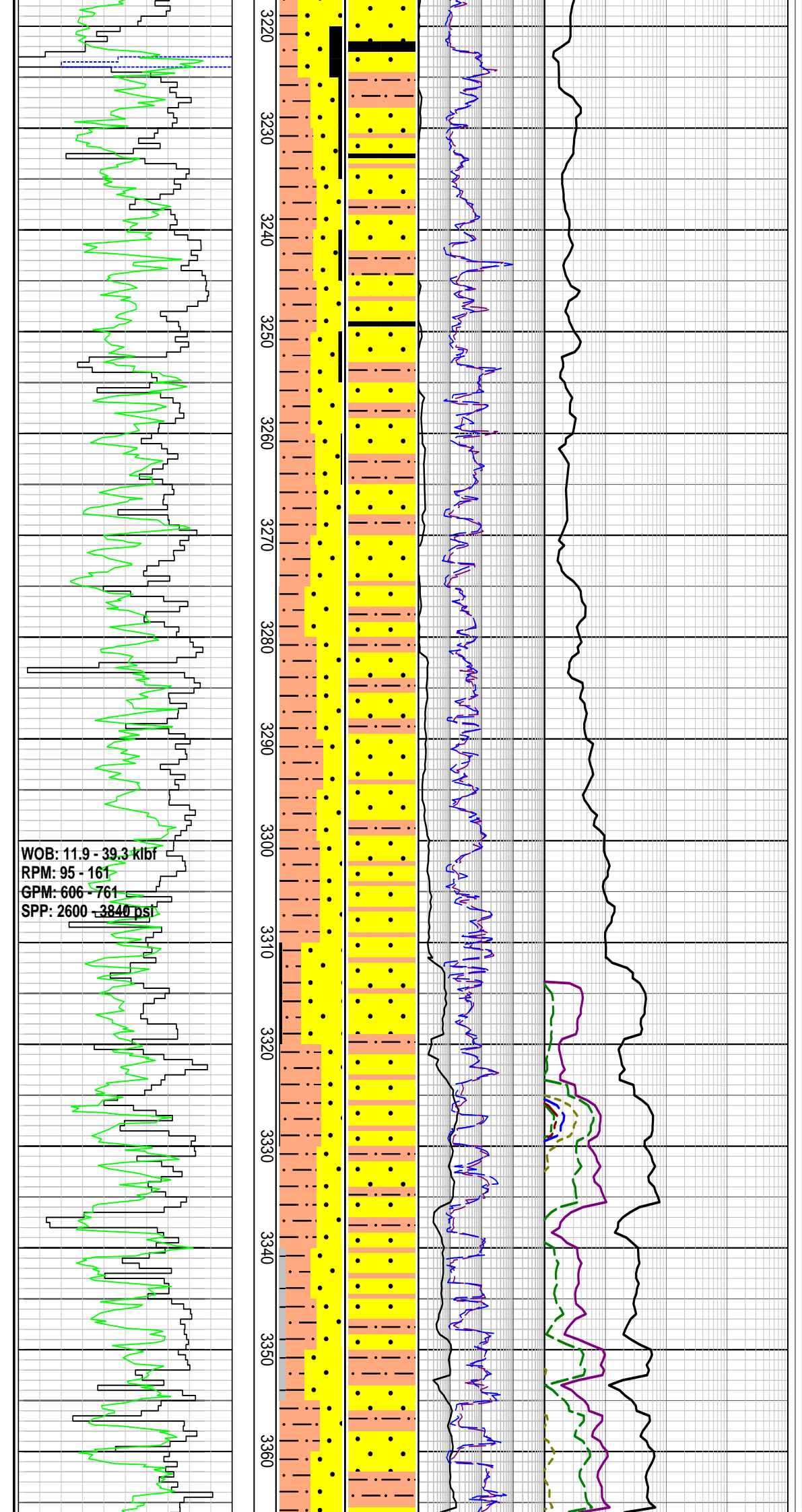
SANDSTONE: trnsp, trnsl, lt-m lt gry, lse, v f, tr v crs, mod srt, sbang-rnidd, mnr wh-lt gry sil cly, tr pyr, f inf por, n/s

MD: 3175.76m Inc: 36.39°
Azi: 157.79° TVD: 2686.23m

ARGILLACEOUS SILTSTONE: m dk gry, dk brnsh gry-brn blk, frm-mod hd, sbblky-blky, tr pyr, tr-rr carb frag

MD: 3204.32m Inc: 36.69°
Azi: 156.93° TVD: 2709.17m

SANDSTONE: trnsp, trnsl,



lt-med lt gry, lse, v f, tr v crs
 mod srt, sbang-rnnd, mn
 wh-lt gry sil cly, tr pyr, f inf
 por, n/s

MD: 3233.41m Inc: 36.98°
 Azi: 151.11° TVD: 2732.46m

COAL: gry blk-blk, frm-mod
 hd, occ brit, blk, occ sbfiss,
 dl-sbvit lstr, occ sbconch
 frac

Run Carbide @ 3251 mMDRT,
 Hole size = 8.9"

MD: 3262.37m Inc: 36.02°
 Azi: 152.71° TVD: 2735.74m

ARGILLACEOUS
 SILTSTONE: m gry-dk gry, dk
 brnsh gry-brn blk, frm-mod
 hd, sbblky-blky, mn sil cly, tr
 pyr, tr-rr carb frag, grd to
 Clst

MD: 3291.18m Inc: 36.12°
 Azi: 160.61° TVD: 2779.05m

SANDSTONE: trnsl, occ lt-m
 lt gry, lse, v f-v crs, p srt,
 sbang-rnnd, tr pyr, tr rk flr, f
 inf por, n/s

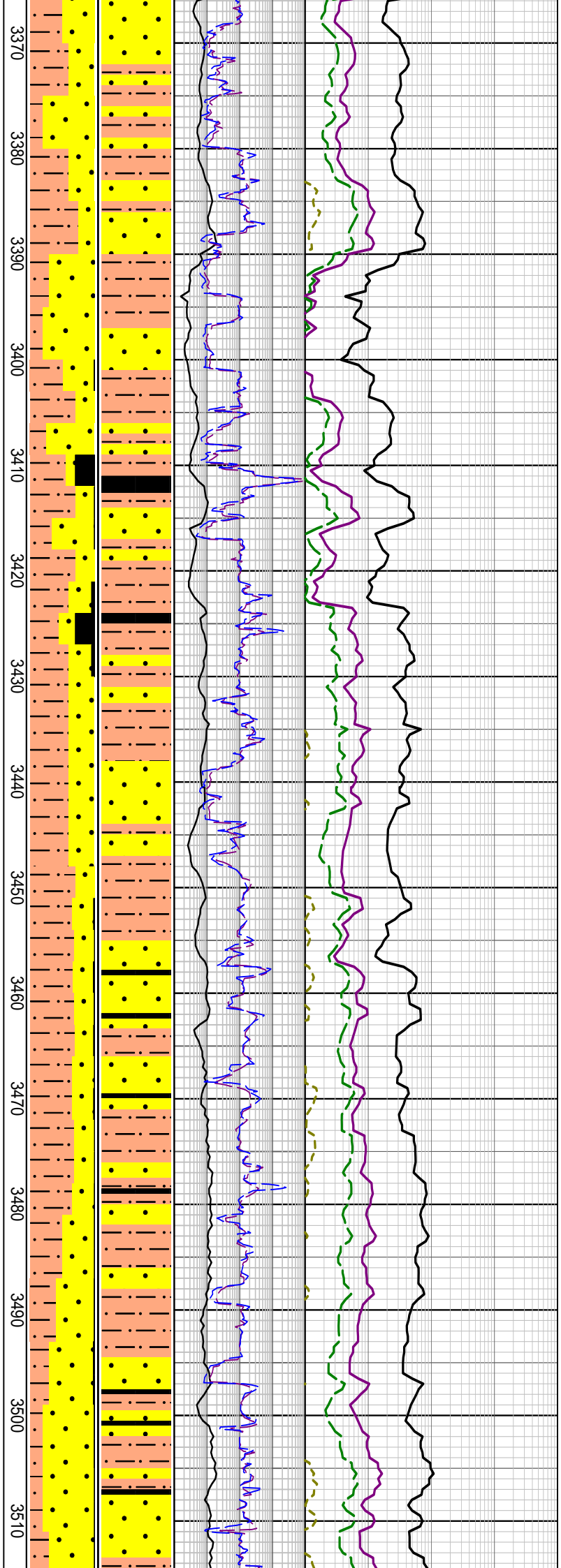
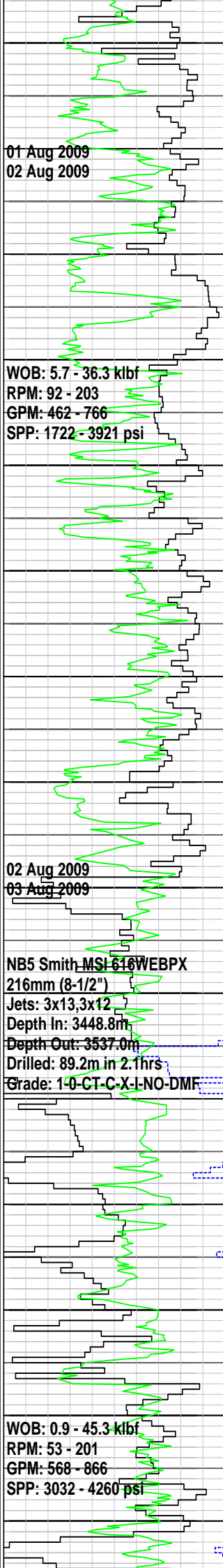
MD: 3320.35m Inc: 36.24°
 Azi: 159.29° TVD: 2802.59m

MD: 3333.62m Inc: 36.47°
 Azi: 158.93° TVD: 2813.27m

CLAYSTONE: brnsh
 gry-brnsh blk, sft-mod hd,
 sbblky-blky, occ amor, mn
 sil slt, tr pyr, tr carb frag

MD: 3349.35m Inc: 36.25°
 Azi: 157.70° TVD: 2825.94m

ARGILLACEOUS



SILTSTONE: dom lt gry-m gry, occ dk gry, sft frm, crmbly, amor-sbblky, disp, com v f qtz, tr pyr, tr-rr carb frag

MD: 3379.19m Inc: 36.82°
Azi: 155.23° TVD: 2849.92m

MW 1.13sg FV 49
PV/YP 14/27 Gels 8/10/11
Sol% 8.0 CI 47.5k

MD: 3407.07m Inc: 36.55°
Azi: 156.71° TVD: 2872.27m

COAL: grysh blk-blk, brit-hd, blkly, sbfis i/p, dl-vit lstr, occ sbconch frac

SANDSTONE: trnsl-op, occ v lt gry-m lt gry, lse, v f-v crs, dom crs, p srt, sbang-sbrnddd, sli sph-elong, tr pyr, tr rk flr, p-fr inf por, n/s

Samples from 3436m to 3448m were not circulated up due to a leak in the derrick gooseneck on the standpipe

MD: 3433.68m Inc: 36.87°
Azi: 153.94° TVD: 2893.61m

ARGILLACEOUS
SILTSTONE: dom lt gry-m gry, occ olv blk-dk gry, sft-frm, crmbly, sbblky-blky, com v f qtz, tr pyr, rr carb frag

MD: 3462.78m Inc: 36.52°
Azi: 152.02° TVD: 2916.94m

SANDSTONE: trnsl-op, m lt gry-brn gry, dom fri-frm, lse i/p, v f-crs, dom v f-f, sbang-rnddd, p srt, sli sph-elong, com sil cly, tr pyr, p vis por, n/s

MD: 3475.07m Inc: 36.21°
Azi: 152.21° TVD: 2926.84m

ARGILLACEOUS
SILTSTONE: dom m gry-brnsh gry, occ lt gry-v dk gry, sft-frm, occ crmbly, amor-sbblky, com v f qtz, tr pyr, tr-rr carb frag

MD: 3492.05m Inc: 35.78°
Azi: 152.89° TVD: 2940.58m

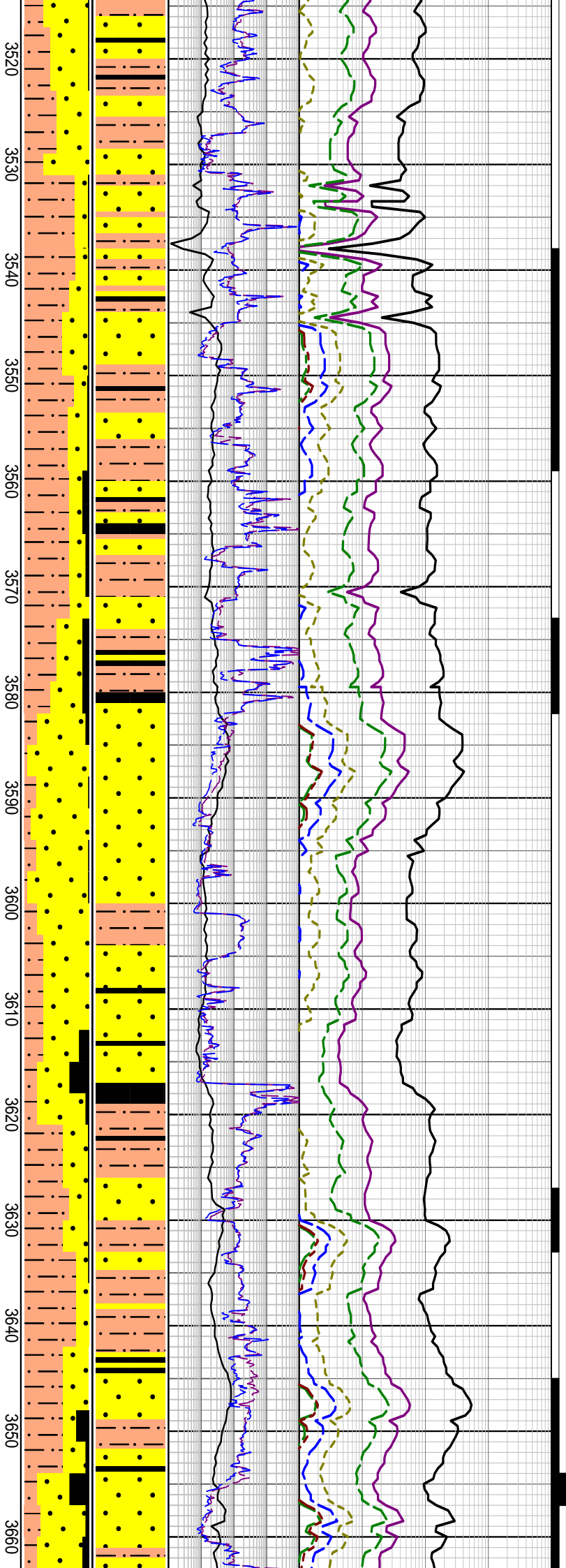
MD: 3500.29m Inc: 35.47°
Azi: 152.89° TVD: 2947.47m

COAL: blk, frm-mod hd, brit i/p, blkly-occ sbfis, dl-vit lstr,

03 Aug 2009
 04 Aug 2009

5RR Smith MSI 616WEBPX
 216mm (8-1/2")
 Jets: 3x13,3x12
 Depth In: 3537.0m
 Depth Out: 3921.0m
 Drilled: 383.0m in 16.3hrs
 Grade: 1-1-CI-S-X-I-WT-3-D

WOB: 4.5 - 31.2 kbf
 RPM: 9 - 126
 GPM: 483 - 615
 SPP: 2395 - 4111 psi



occ sbconch frac

MD: 3519.73m Inc: 34.81°
 Azi: 153.80° TVD: 2963.44m

Samples from 3531m to 3537m were not circulated up due to mud motor failure

SANDSTONE: trnsl-op, m lt gry-brn gry, dom fri-frm, lse i/p, v f-crs, dom v f-f, sbang-rnnd, p srt, sli sph-elong, com sil cly, tr pyr, p vis por

MD: 3548.84m Inc: 33.92°
 Azi: 153.76° TVD: 2987.47m

FLUORESCENCE(3538-3559m (tr): v dl gn yel sptd-pch fluor w/ v wk diffuse-v slw stmg ct fluor & thn dl gn yel ring res fluor

ARGILLACEOUS SILTSTONE: dom m gry-brnsh gry, occ lt gry-v dk gry, sft-frm, occ crmbly, amor-sbbkly, com v f qtz, tr sph-elong, tr pyr, gd inf por

MD: 3577.49m Inc: 33.10°
 Azi: 154.0° TVD: 3011.36m

FLUORESCENCE(3573-3582m (tr): v dl gn yel sptd-pch fluor w/ v wk diffuse-v slw stmg ct fluor & thn dl gn yel ring res fluor

SANDSTONE: trnsl-op, lse, f-v crs, dom m-crs, sbang-rnnd, p-mod srt, sli sph-elong, tr pyr, gd inf por

MD: 3608.69m Inc: 32.91°
 Azi: 154.09° TVD: 3037.52m

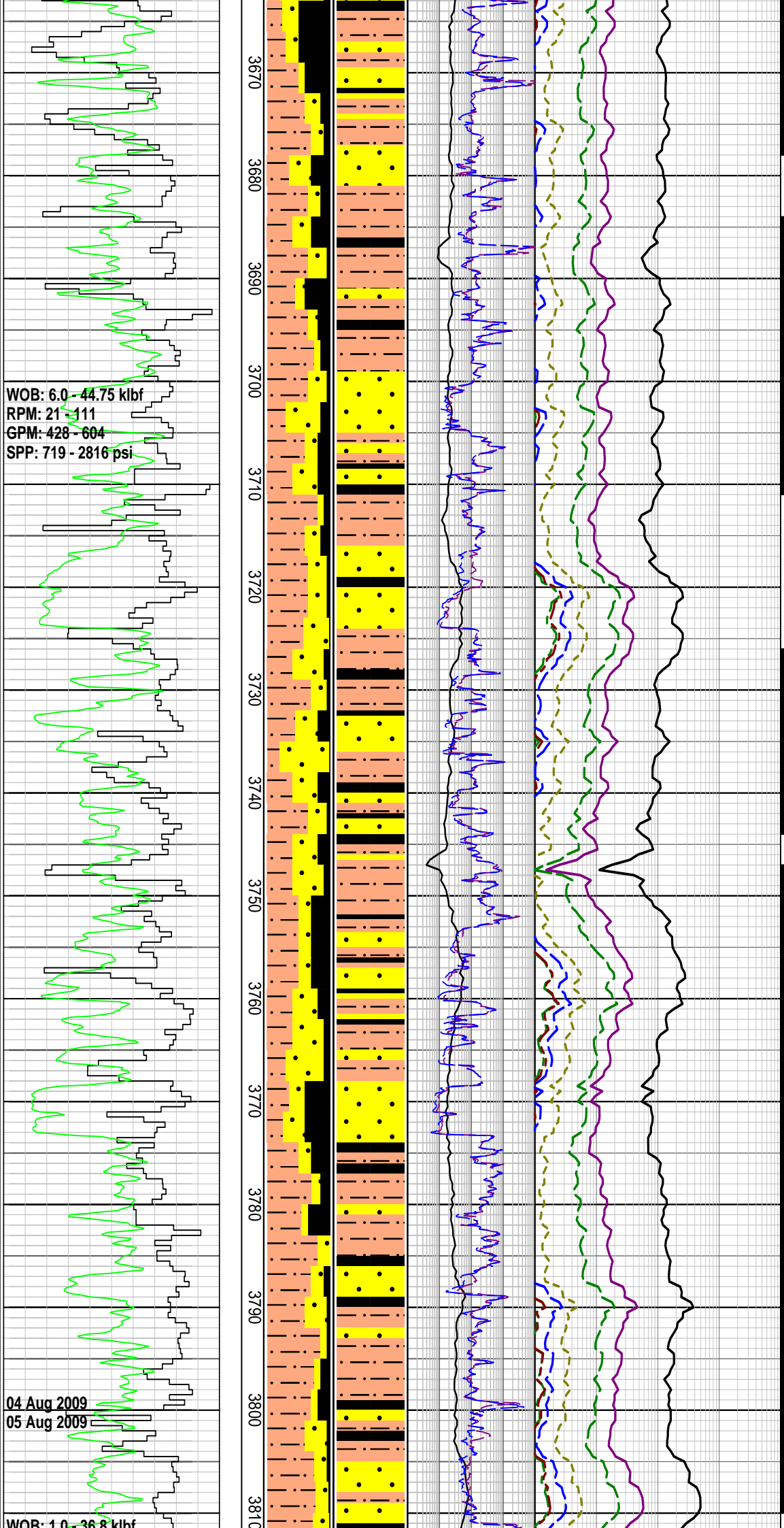
COAL: blk, frm-mod hd, brit, blk-occ sbfis, dl-vit lstr, occ sbconch frac

FLUORESCENCE(3627-3633m (tr-35%): dl yel dir fluor, nil-v slw diffuse-v mky ct fluor, dl yel res fluor

MD: 3635.12m Inc: 32.09°
 Azi: 154.39° TVD: 3059.81m

SANDSTONE: v lt gry, trnsl, dom lse, m gn, mnr crs, ang-rnnd, wl srt, mod sph, tr pyr, f-mod inf por

FLUORESCENCE(3645-3678m (10-50%): dl yel-yel wh dir fluor, nil-v wk stmg mky ct fluor, v wk dl yel res fluor



MD: 3663.53m Inc: 31.58°
 Azi: 154.62° TVD: 3083.95m

SANDSTONE: v lt gry, trnsl, dom lse, m gn, mnr crs, ang-rnidd, wl srt, mod sph, tr pyr, f-mod inf por

MD: 3692.52m Inc: 30.55°
 Azi: 154.89° TVD: 3108.78m

FLUORESCENCE(3684-3711m) (tr): v dl gnsh yel dir fluor, v wk stmg mky-wh ct fluor, v wk yel res fluor

ARGILLACEOUS SILTSTONE: dom m gry-brnsh gry, occ lt gry-v dk gry, sft frm, occ crmbly, amor-sbblky, com v f qtz, mnr sil cly, tr pyr, tr-rr carb frag

MD: 3721.03m Inc: 29.79°
 Azi: 154.69° TVD: 3133.43m

SANDSTONE: v lt gry, trnsl, dom lse, m gn, mnr crs, ang-rnidd, wl srt, mod sph, tr pyr, f-mod inf por

FLUORESCENCE(3726-3744m) (tr-10%): pch gnsh-yel dir fluor, nil-v wk, slw, stmg mky wh ct, n nat ct

MD: 3750.28m Inc: 28.74°
 Azi: 155.11° TVD: 3158.95m

SANDSTONE: lt gry, trnsp-trnsl, dom lse, f-crs, dom f-m, sbrnidd, mod srt, sbsph-sbelong, tr pyr, mod inf por

FLUORESCENCE(3747-3810m) (tr-35%): dl yelsh gold-gnsh yel dir fluor, v dl yel dir fluor, wk diffuse, mky-wh ct fluor, n nat ct, n nat res

MD: 3779.88m Inc: 27.81°
 Azi: 155.09° TVD: 3158.01m

COAL: blk, frm-mod hd, brit, blk-occ sbfis, dl-vit lstr, occ sbconch frac

ARGILLACEOUS SILTSTONE: dom m gry-brnsh gry, occ lt gry-v dk gry, sft frm, occ crmbly, amor-sbblky, com v f qtz, mnr sil cly, tr pyr, tr-rr carb frag

MD: 3809.98m Inc: 26.69°

iso-Pentane ppm

n-Pentane ppm

100 | 1000 | 10000 | 100000