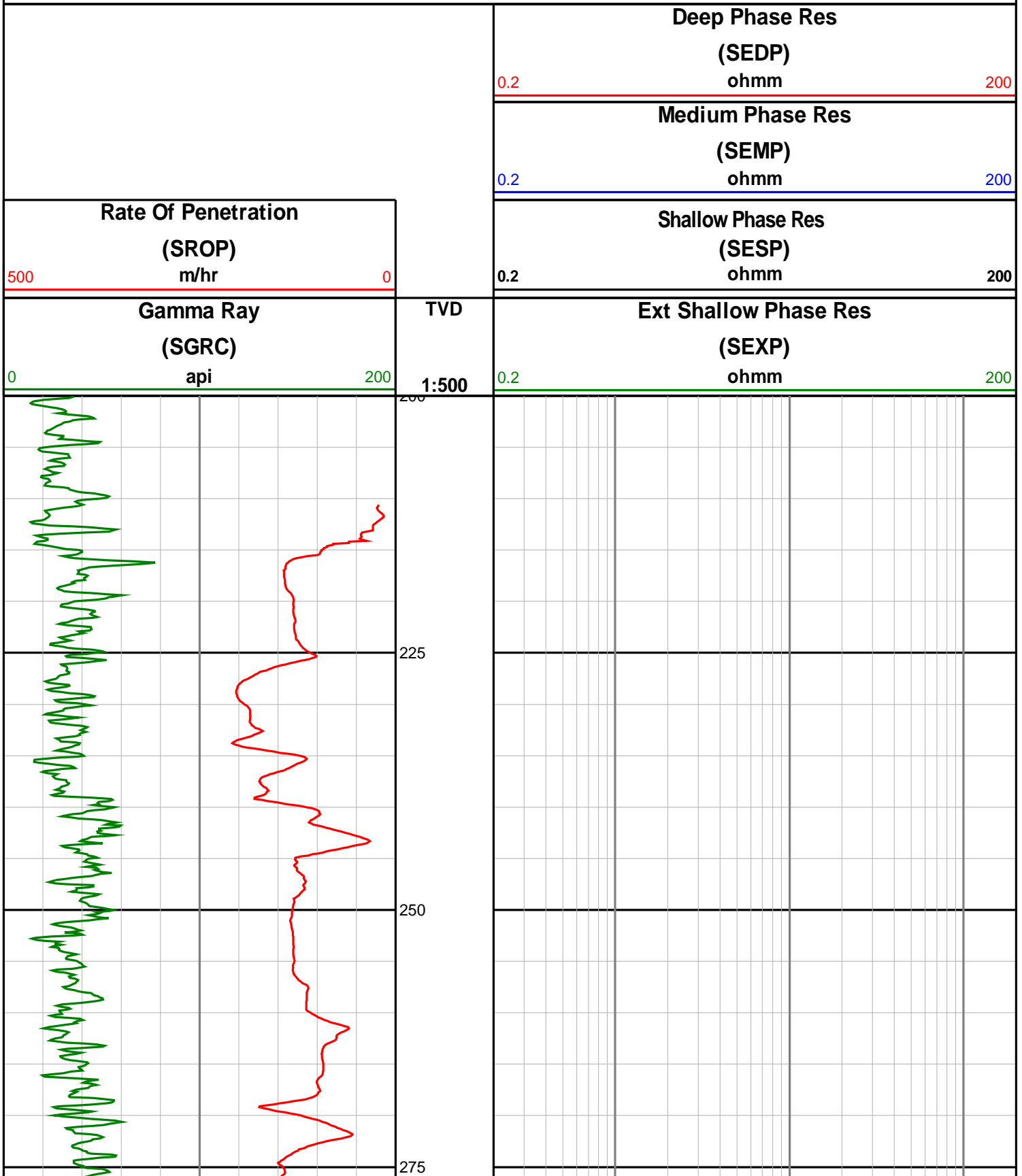
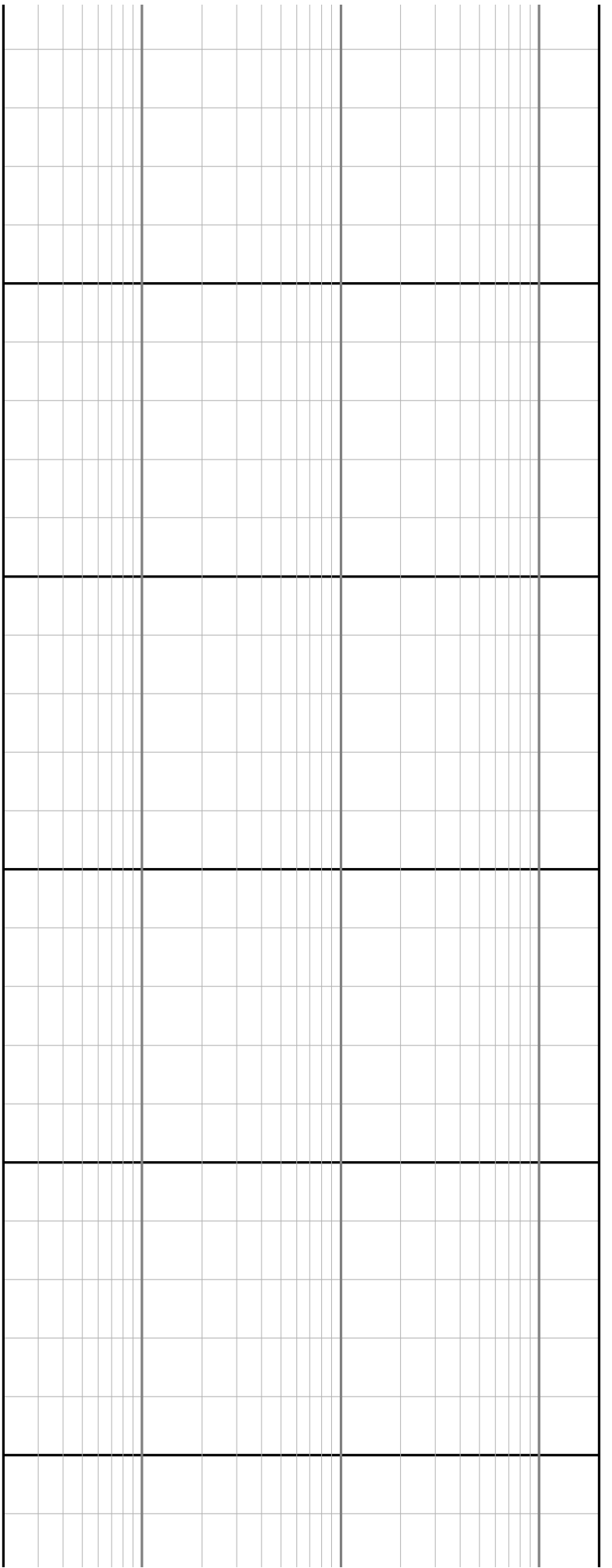
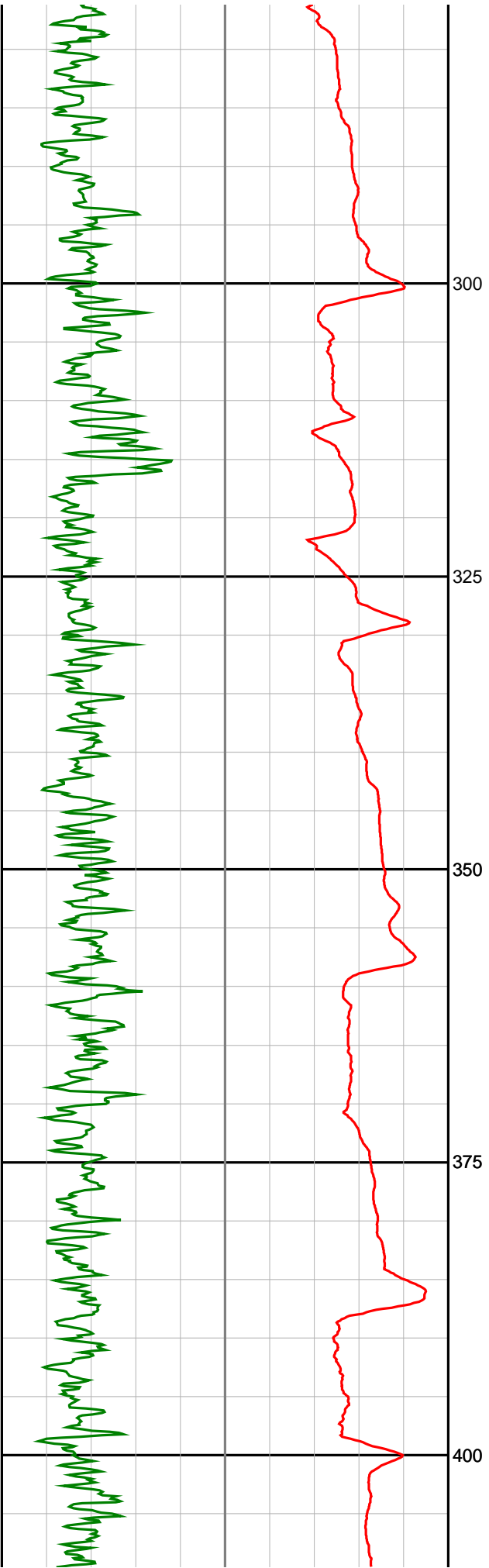


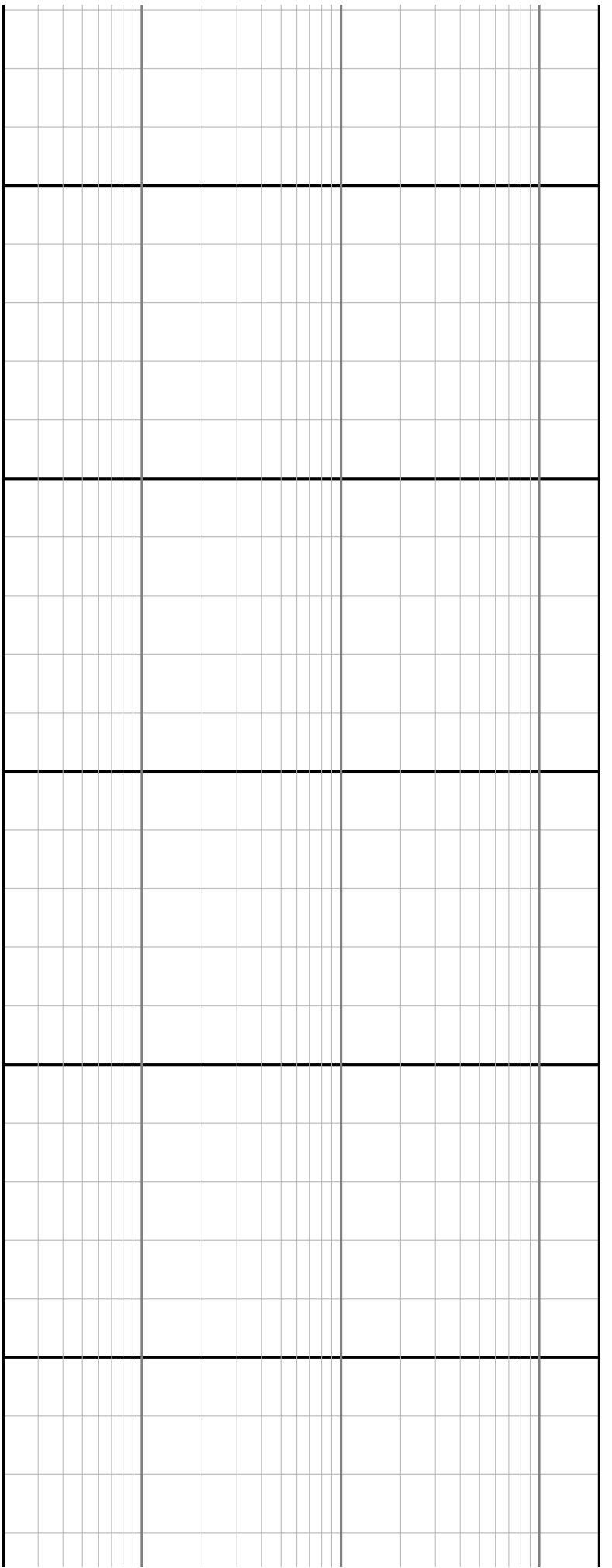
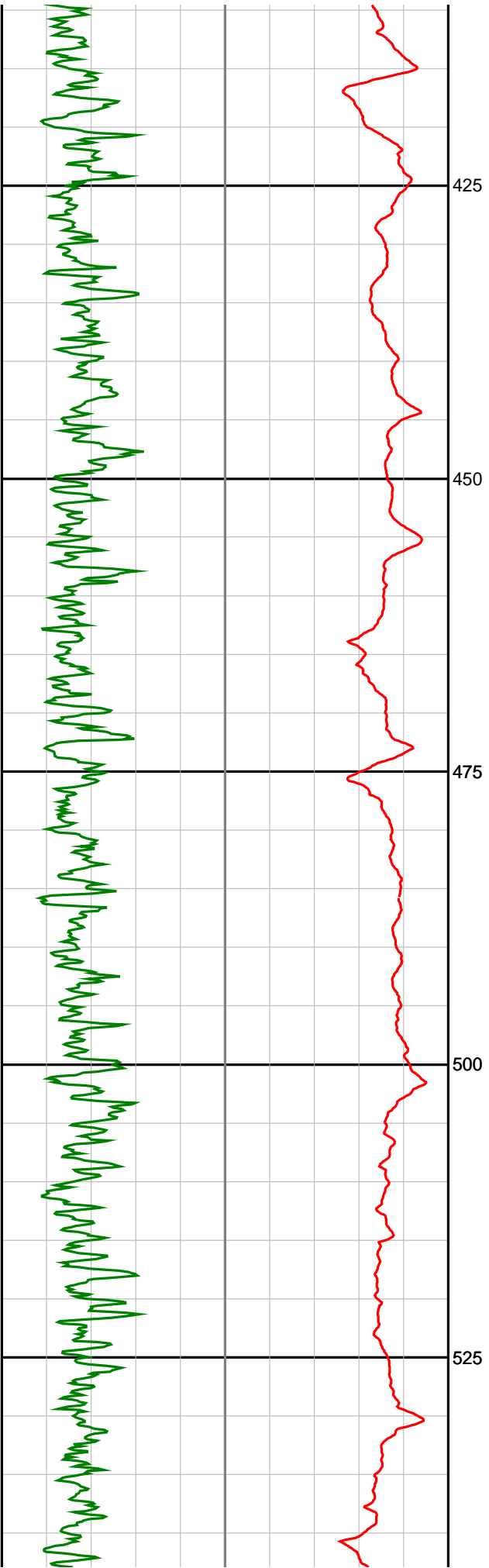
# Anzon Australia Ltd

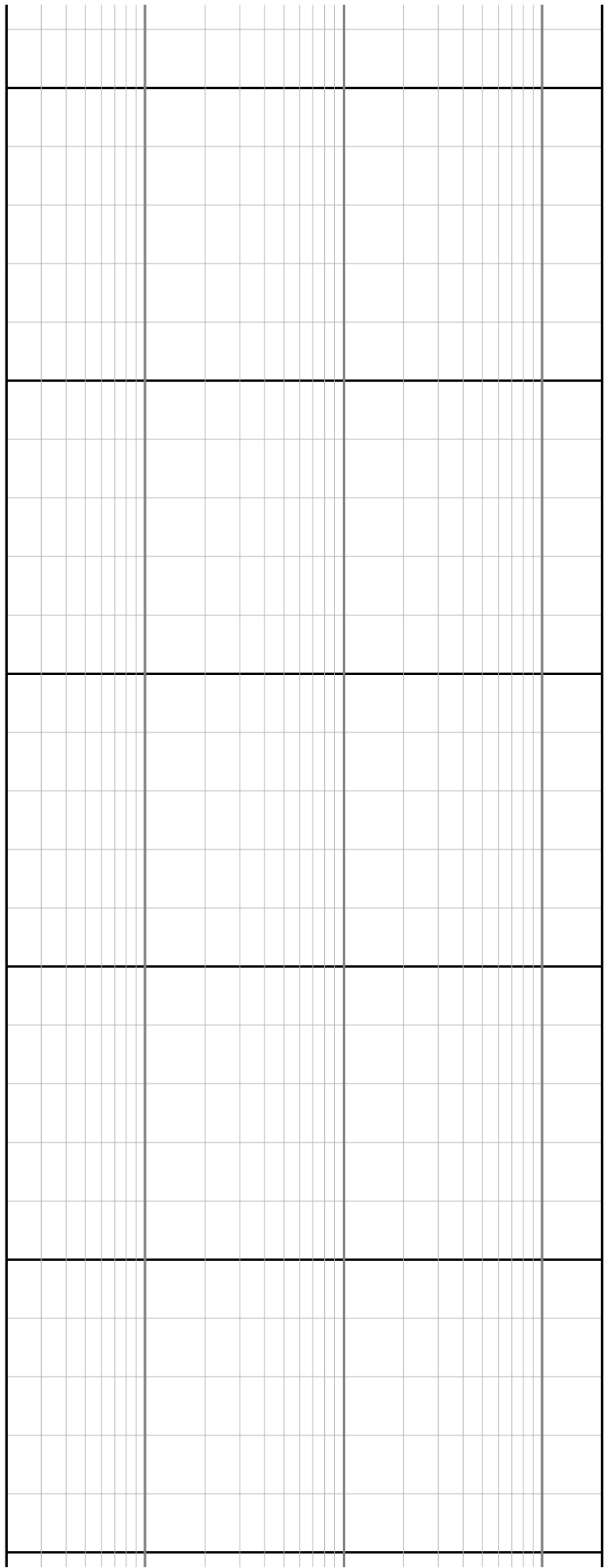
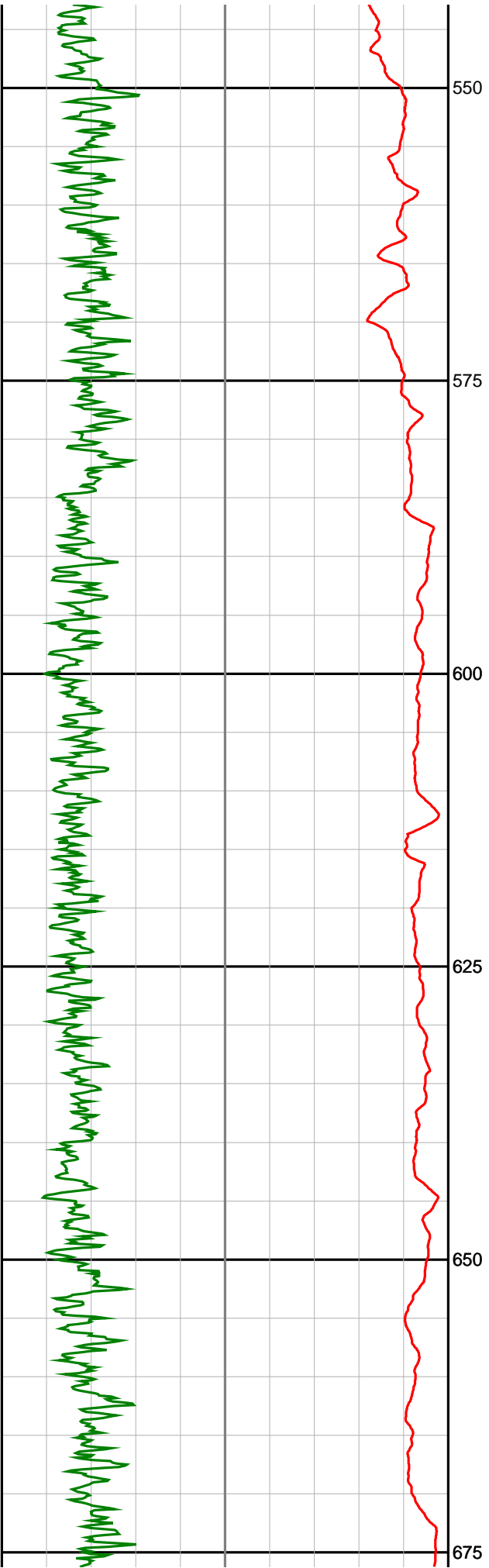
## Basker-4

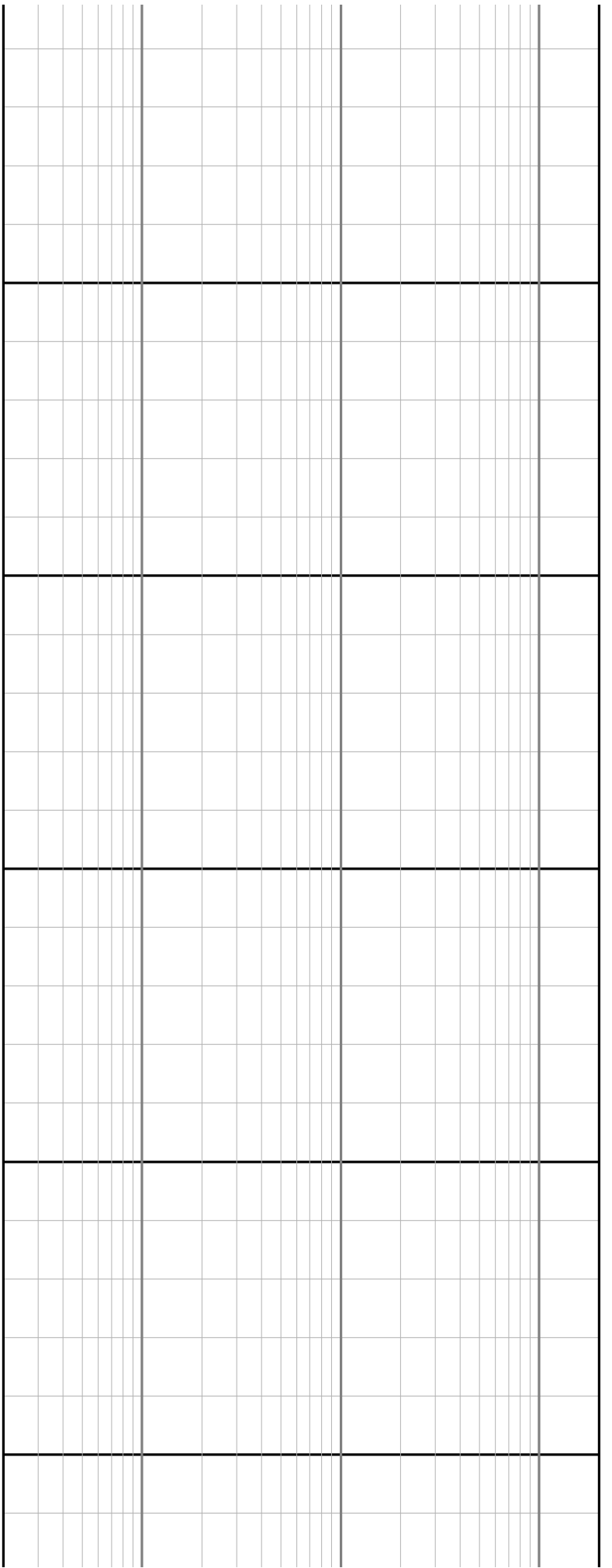
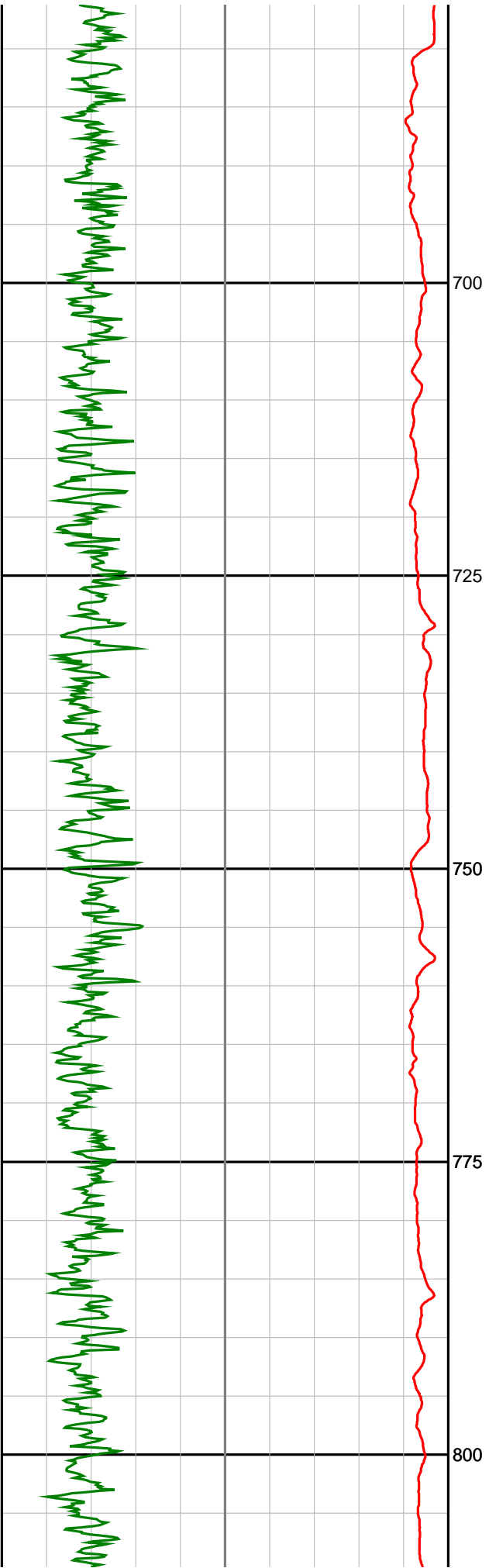
Recorded LWD Log (Permanent Datum - LAT)

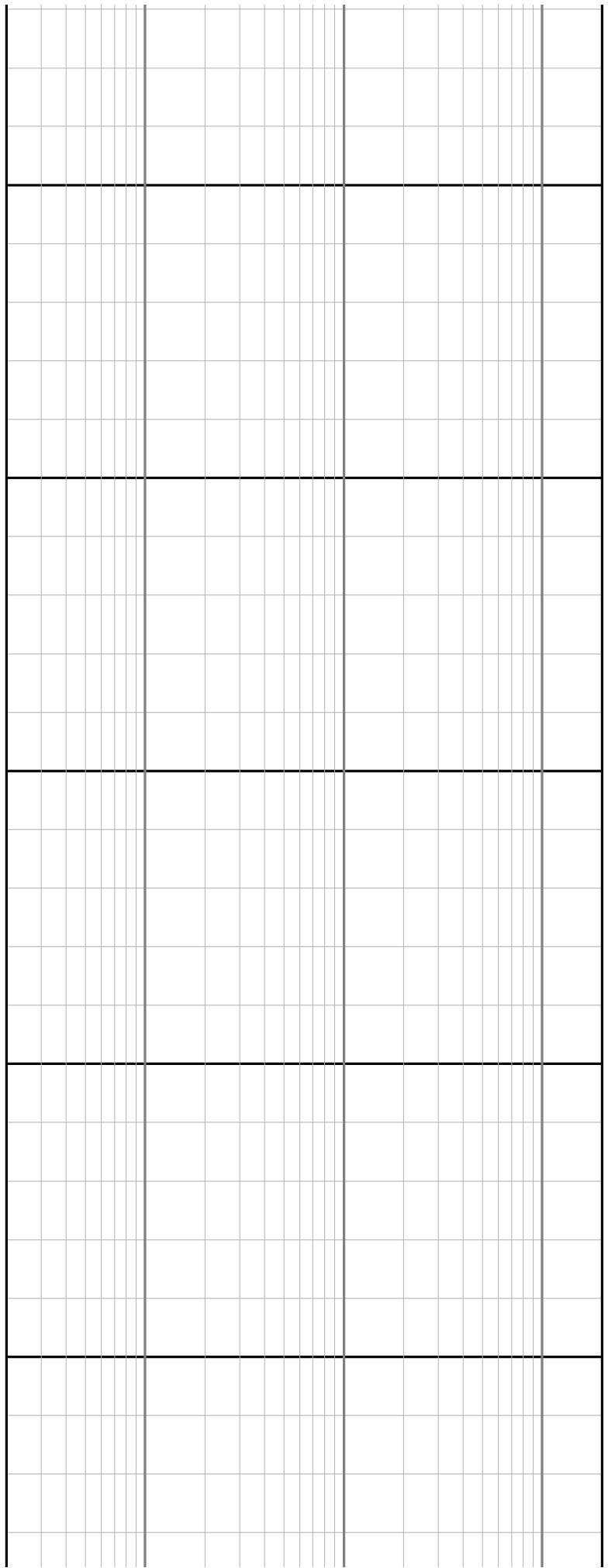
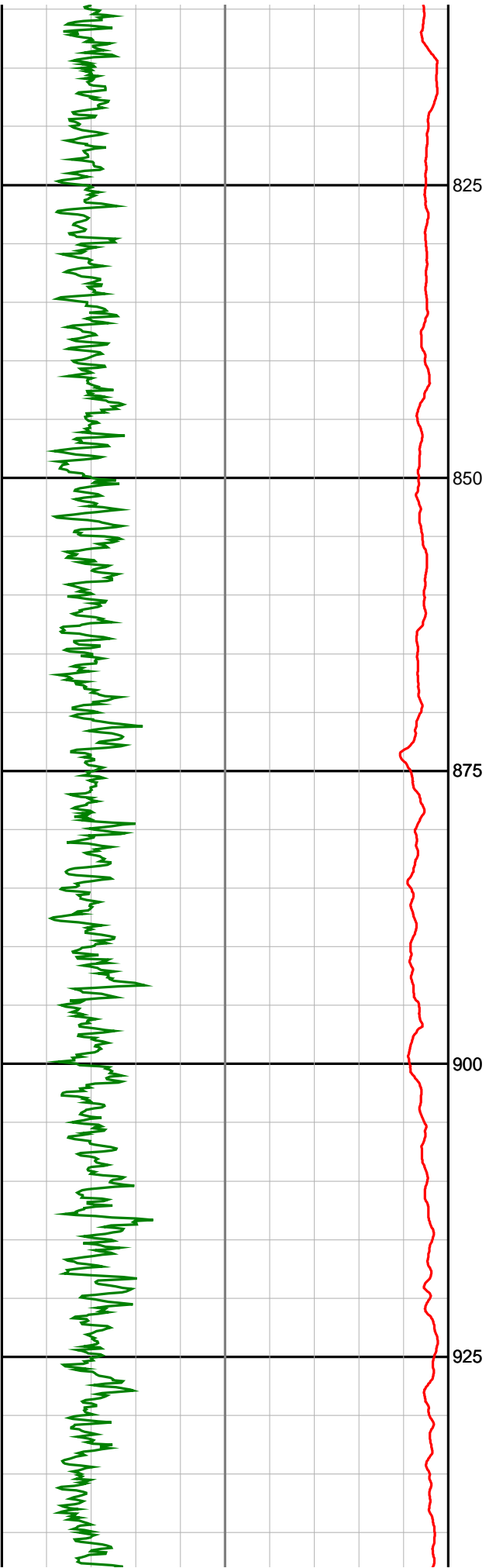


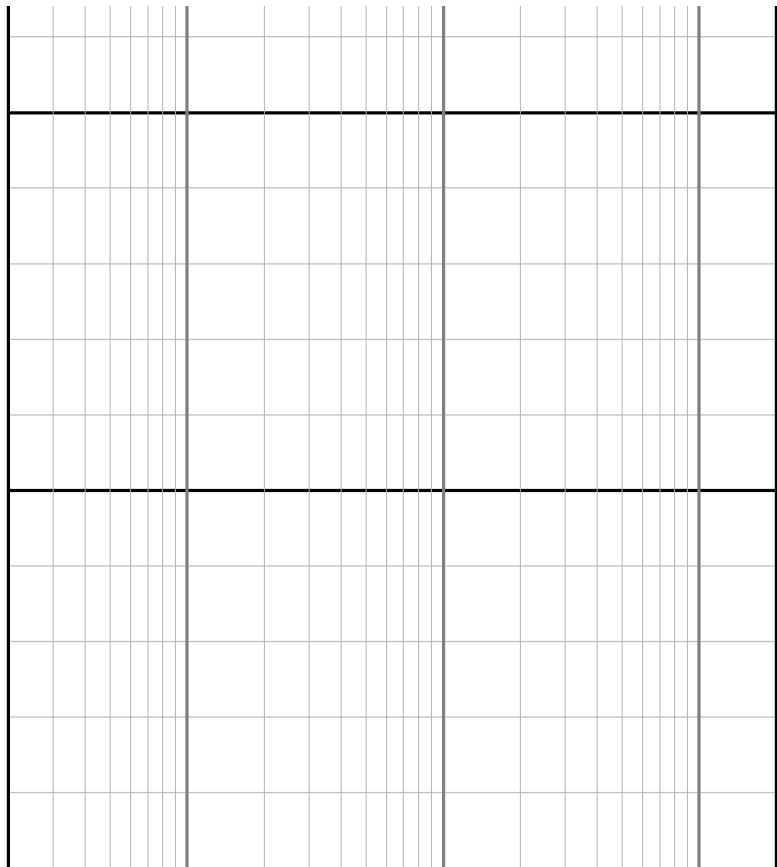
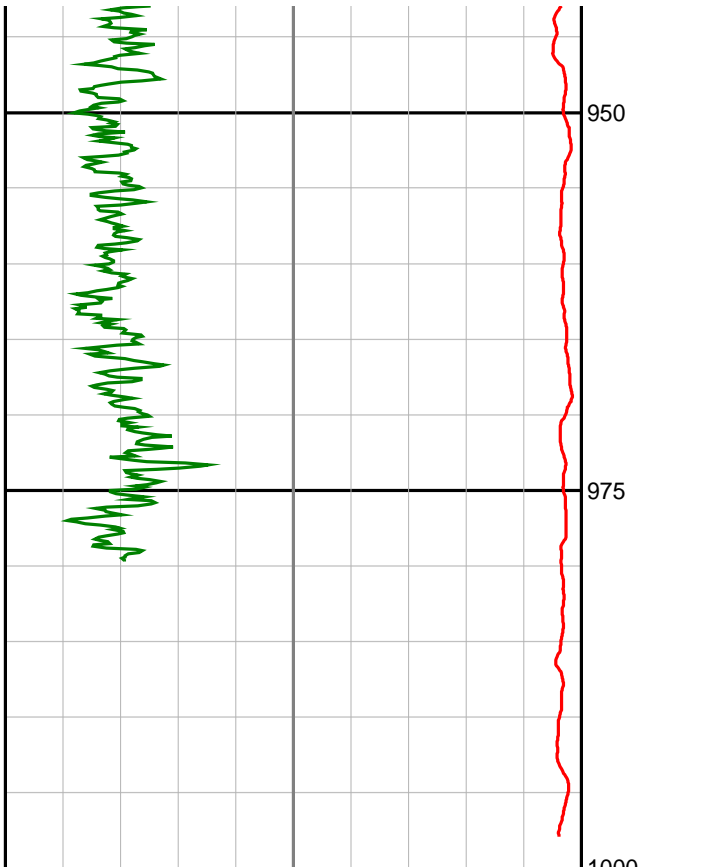












<p align="center"><b>Gamma Ray (SGRC)</b> api</p> <p>0 <span style="float:right">200</span></p>	<p align="center"><b>TVD</b>  1:500</p>	<p align="center"><b>Ext Shallow Phase Res (SEXP)</b> ohmm</p> <p>0.2 <span style="float:right">200</span></p>
<p align="center"><b>Rate Of Penetration (SROP)</b> m/hr</p> <p>500 <span style="float:right">0</span></p>	<p align="center"><b>Shallow Phase Res (SESP)</b> ohmm</p> <p>0.2 <span style="float:right">200</span></p>	
	<p align="center"><b>Medium Phase Res (SEMP)</b> ohmm</p> <p>0.2 <span style="float:right">200</span></p>	
	<p align="center"><b>Deep Phase Res (SEDP)</b> ohmm</p> <p>0.2 <span style="float:right">200</span></p>	