

Company: Ezzo Australia Pty Ltd

Well: BTA_A-3W
Field: Barracouta
Rig: SHU/Prod 2

Country: Australia

1-11/16" BackOff
Perforation Record
27-Oct-2008

Rig: SHU/Prod 2
Field: Barracouta
Location: Gippsland
Well: BTA_A-3W
Company: Ezzo Australia Pty Ltd

LOCATION		
Gippsland	Elev.:	K.B. 55.87 m
Basin		G.L. -45.70 m
Bass Strait		D.F. 55.87 m
Permanent Datum:	MSL	Elev.: 0.00 m
Log Measured From:	D.F.	55.87 m above Perm. Datum
Drilling Measured From:	D.F.	
State: Victoria	Max. Well Deviation 2.5 deg	Longitude 147° 40' 29" E Latitude 38° 17' 53" E

Logging Date	27-Oct-2008		
Run Number	1		
Depth Driller	501.5 m		
Schlumberger Depth	3477.69 m		
Bottom Log Interval	500 m		
Top Log Interval	380 m		
Casing Fluid Type	Brine		
Salinity			
Density	9.8 lbm/gal		
Fluid Level	0 m		
BIT/CASING/TUBING STRING			
Bit Size	12.250 in		
From	502.6 m		
To	3117 m		
Casing/Tubing Size	3.500 in		
Weight			
Grade	HWDP / SPEAR		
From	20 m		
To	504 m		
Maximum Recorded Temperatures			
Logger On Bottom	27-Oct-2008	19:00	
Unit Number	3827	AUSL	
Recorded By	C Rowand, M Pratt		
Witnessed By	Mr J. Dean, Mr B. Robinson		

PVT DATA				Run 1	Run 2	F
Oil Density						
Water Salinity						
Gas Gravity						
Bo						
Bw						
1/Bg						
Bubble Point Pressure						
Bubble Point Temperature						
Solution GOR						
Maximum Deviation				2.5 deg		
CEMENTING DATA						
Primary/Squeeze				Primary		
Casing String No						
Lead Cement Type						
Volume						
Density						
Water Loss						
Additives						
Tail Cement Type						
Volume						
Density						
Water Loss						
Additives						
Expected Cement Top						
Logging Date						
Run Number						
Depth Driller						
Schlumberger Depth						
Bottom Log Interval						
Top Log Interval						
Casing Fluid Type						
Salinity						
Density						
Fluid Level						
BIT/CASING/TUBING STRING						
Bit Size						
From						
To						
Casing/Tubing Size						
Weight						
Grade						
From						
To						
Maximum Recorded Temperatures						
Logger On Bottom						
Unit Number						
Recorded By						
Witnessed By						

Run 4

Date Created: 21-OCT-2008 14:36:33

Logging Cable

Type:	7-46ZV XS
Serial Number:	77117
Length:	4559 M
<hr/>	
Conveyance Method:	Wireline
Rig Type:	Offshore Fixed

Log Sequence:	Subsequent Log In the Well
Reference Log Name:	No correlation log
Reference Log Run Number:	No correlation log
Reference Log Date:	No correlation log

3. SHU drill floor at 20.0 M w.r.t. original D.F.
- 4.
- 5.
6. CMTD calibration: $a=3.38E-6$, $b=0.8250$, $c=-230.3$

THE USE OF AND RELIANCE UPON THIS RECORDED-DATA BY THE HEREIN NAMED COMPANY (AND ANY OF ITS AFFILIATES, PARTNERS, REPRESENTATIVES, AGENTS, CONSULTANTS AND EMPLOYEES) IS SUBJECT TO THE TERMS AND CONDITIONS AGREED UPON BETWEEN SCHLUMBERGER AND THE COMPANY, INCLUDING: (a) RESTRICTIONS ON USE OF THE RECORDED-DATA; (b) DISCLAIMERS AND WAIVERS OF WARRANTIES AND REPRESENTATIONS REGARDING COMPANY'S USE OF AND RELIANCE UPON THE RECORDED-DATA; AND (c) CUSTOMER'S FULL AND SOLE RESPONSIBILITY FOR ANY INFERENCE DRAWN OR DECISION MADE IN CONNECTION WITH THE USE OF THIS RECORDED-DATA.

OTHER SERVICES2
OS1:
OS2:
OS3:
OS4:
OS5:

REMARKS: RUN NUMBER 2

1-11/16" Back off correlated to BHA sheet provided by the client
Objective: Run inside HWDP into the Baker Hughes spear assembly that is lodged in 7" casing. Our aim was to place the centre of the backoff strip in the centre of the 6.095" Grapple and fire. A dummy run indicated that we were getting held on a 1.5" Flex joint that was not on the BHA Sheet. It was decided by the client to run the backoff as far as we could get down and shoot.

from the 7" casing.

GR-CCL tagged top of flex joint 499.6 M

SERVICE ORDER #:	4500508431
PROGRAM VERSION:	16C0-147
FLUID LEVEL:	0 m

RUN 1		RUN 2	
WITM (SHM)	SURFACE EQUIPMENT	WITM (SHM)	SURFACE EQUIPMENT

DOWNHOLE EQUIPMENT		DOWNHOLE EQUIPMENT	
MH-PEH-EF MH-PEH-EF 1003	3.68	MH-PEH-EF MH-PEH-EF 1003	7.07
EQF-43 EQF-43 201	3.20	EQF-43 EQF-43 201	6.59
		CCL-PCCL-L CCL-PCCL-L 7353	4.76
		SAFE	4.31
		AH-WPSA-BA AH-WPSA-BA 4001	4.31
		MPD-F MPD-F 3930	3.59

UPCT-A
UPCC-A
UPCH-A 494

Gamma Ray

Casing Co
Tension

SHM_GUN

TOOL BOTTOM

1.37

0.00

MAXIMUM STRING DIAMETER 1.72 IN
MEASUREMENTS RELATIVE TO TOOL ZERO
ALL LENGTHS IN METERS

AH-SAFE
AH-SAFE

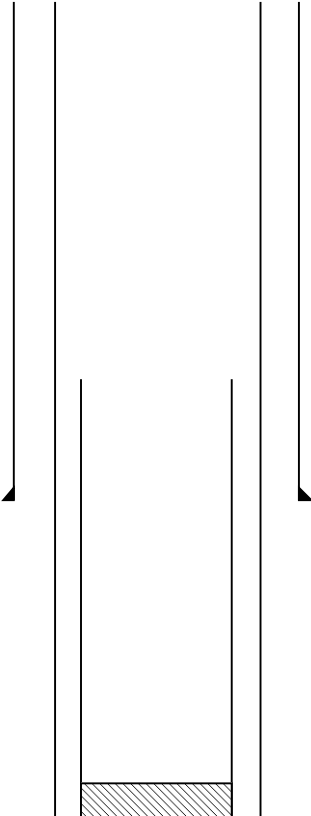
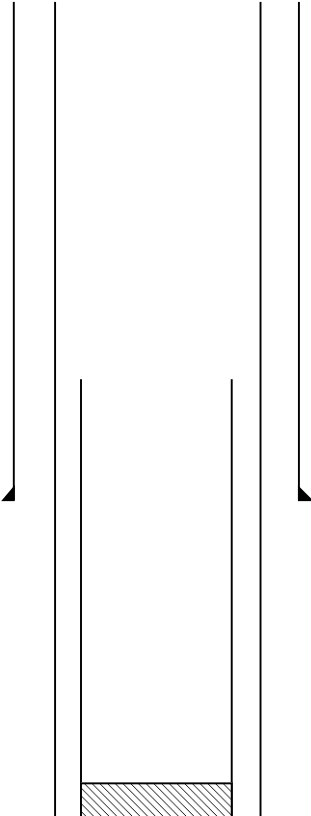
SHM_GUN
GUN-Back Off Strip

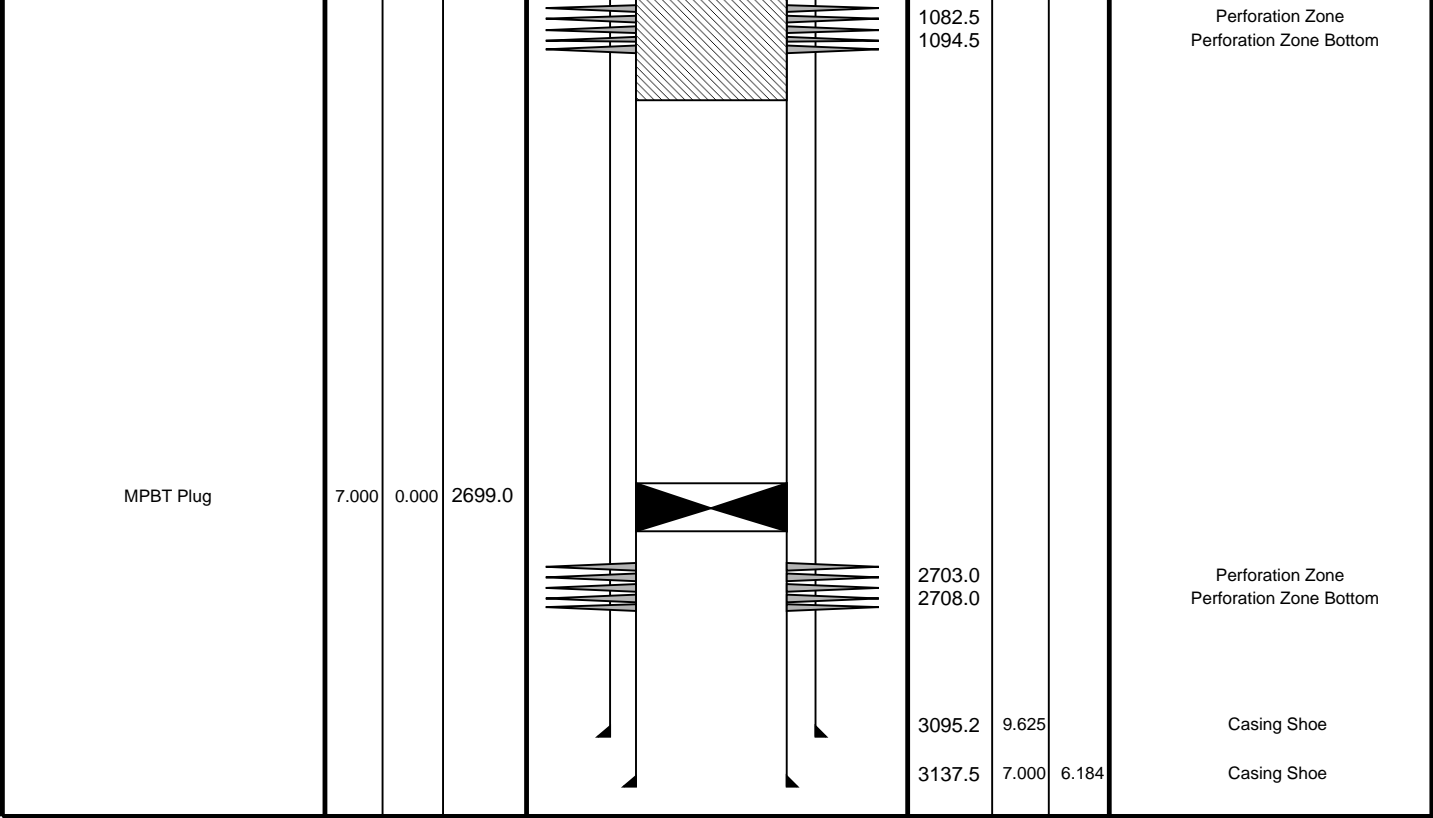
3.10

2.49

TOOL BOTTOM

MAXIMUM STRING DIAMETER 1.69 IN
MEASUREMENTS RELATIVE TO TOOL ZERO
ALL LENGTHS IN METERS

Production String	(in)		(m)	Well Schematic	(m)	(in)		Casing String
	OD	ID	MD		MD	OD	ID	
					40.7	9.625		Casing String
					502.6	7.000	6.184	Casing String
					797.1	13.375		Casing Shoe
					1065.0			Cement Plug



1-11/16" Back Off Record

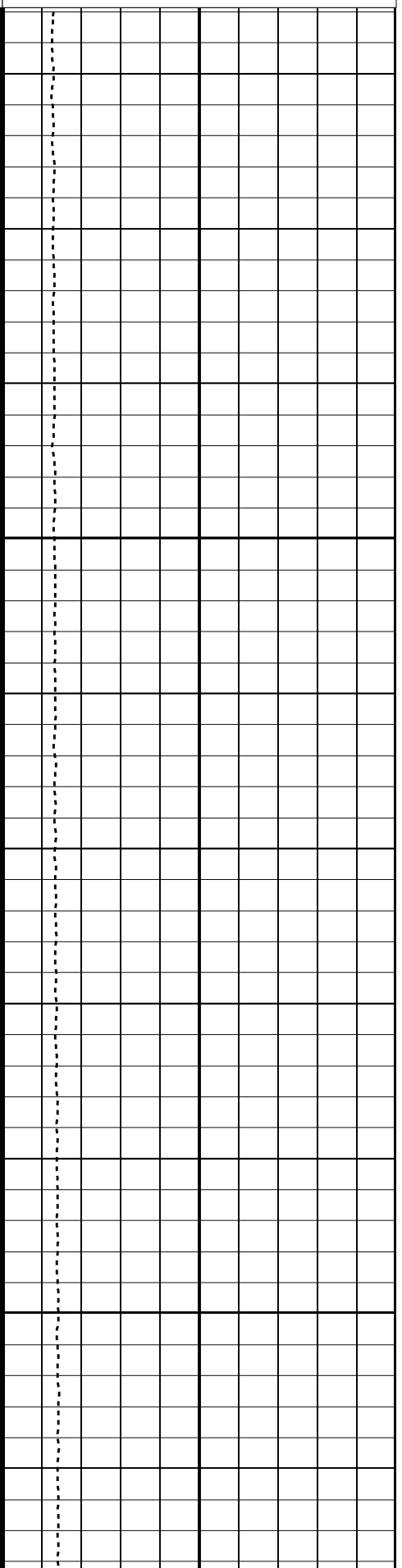
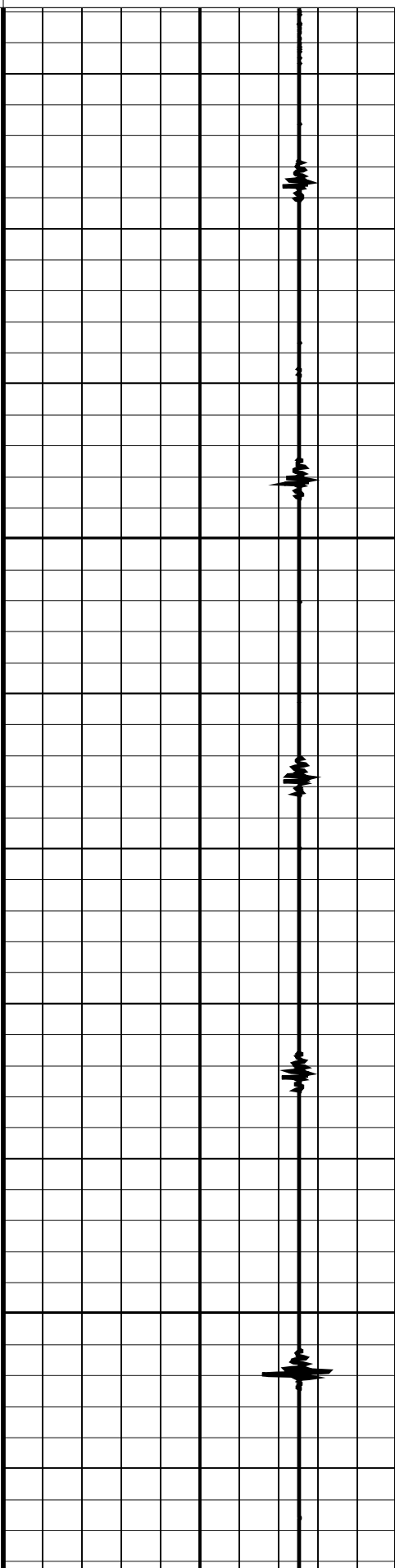
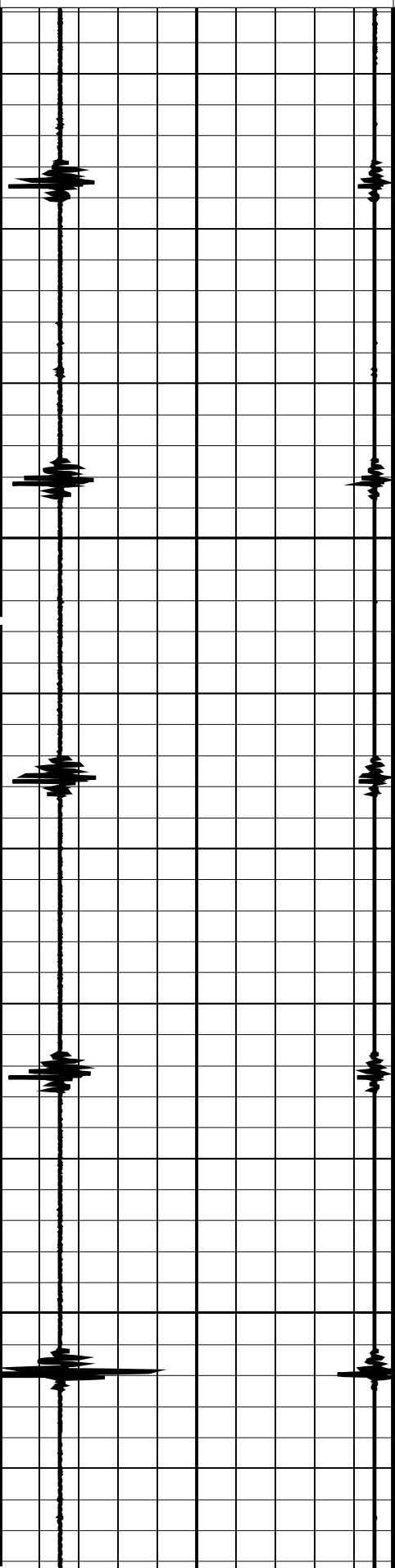
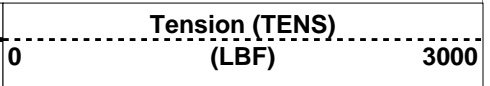
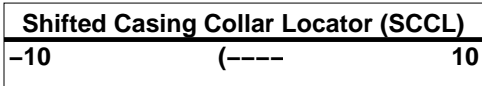
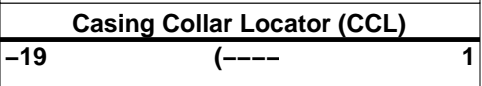
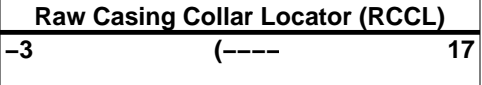
MAXIS Field Log

Company: Esso Australia Pty Ltd Well: BTA_A-3W

Input DLIS Files					
DEFAULT	Flip_PERFO_197LUP	PRODUCER	27-Oct-2008 23:44	497.7 M	357.8 M
Output DLIS Files					
DEFAULT	PERFO_197PUP	FN:202 PRODUCER	27-Oct-2008 23:45	497.7 M	357.8 M

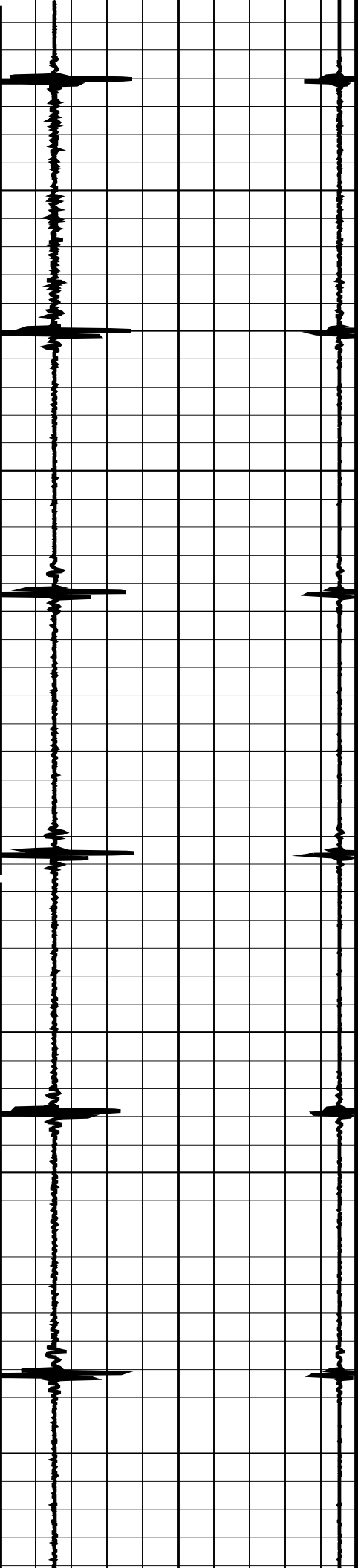
OP System Version: 16C0-147			
MCM			
SHM_GUN	16C0-147	SAFE	16C0-147
CCL-L	16C0-147		

Time Mark Every 60 S



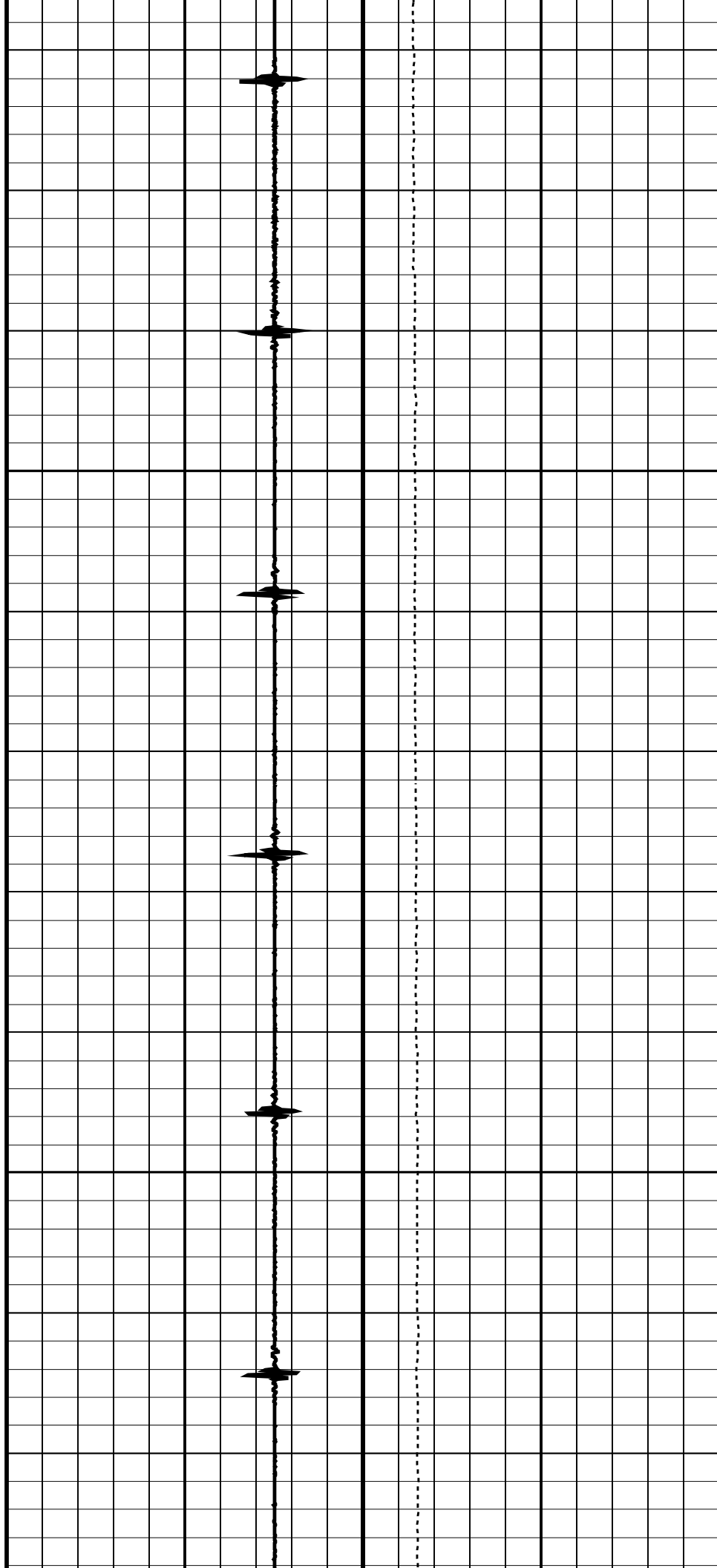
375

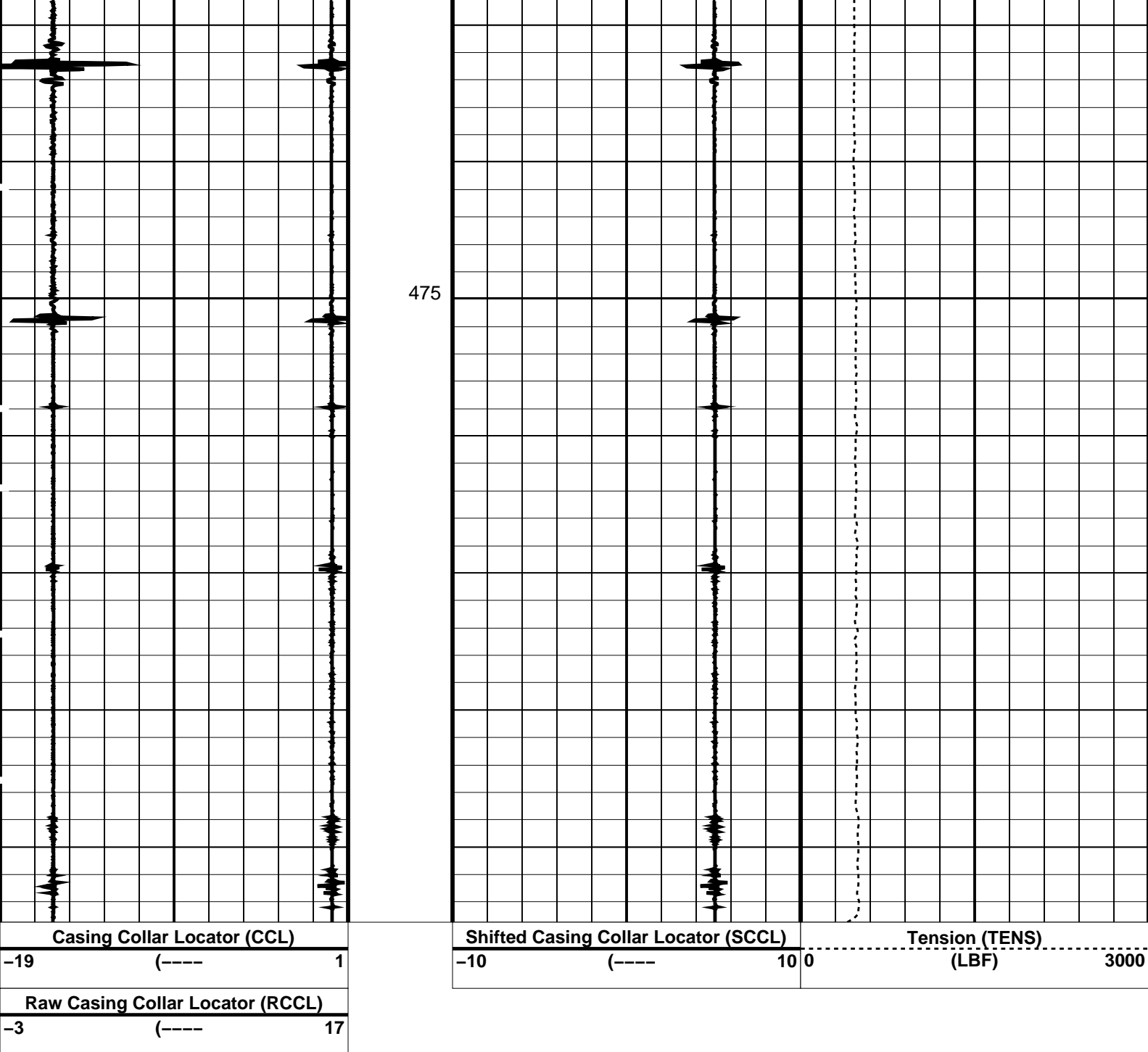
400



425

450





PIP SUMMARY

Time Mark Every 60 S

Parameters

DLIS Name	Description	Value
CCLD	CCL-L: Casing Collar Locator	12 IN
CCLT	CCL reset delay	0.3 V
	CCL Detection Level	
DO	System and Miscellaneous	0.0 M
PP	Depth Offset for Playback	NORMAL
	Playback Processing	

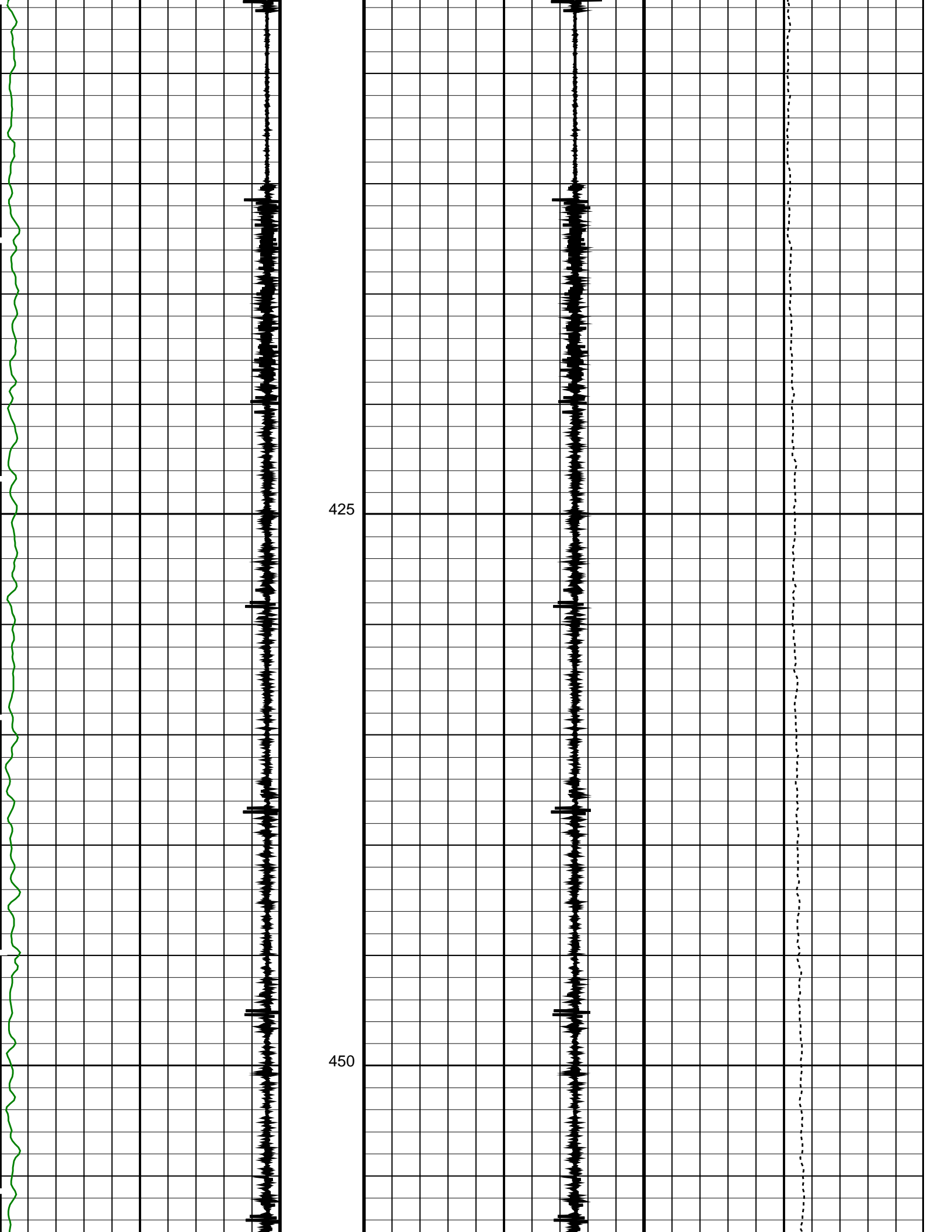
Format: CCLLog Vertical Scale: 1:200

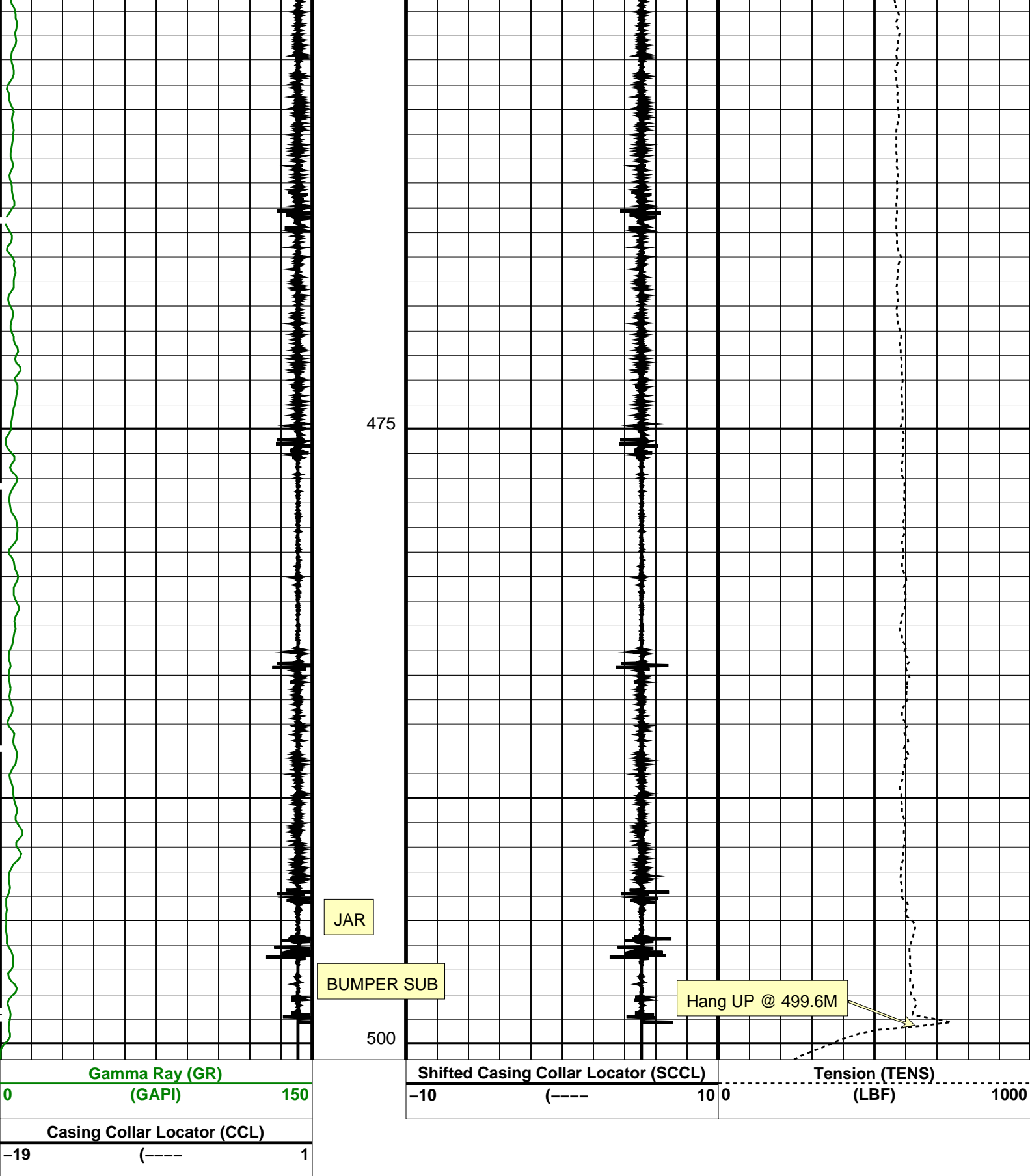
Graphics File Created: 27-Oct-2008 23:45

OP System Version: 16C0-147
MCM

SHM_GUN 16C0-147 SAFE 16C0-147
CCL-L 16C0-147

Input DLIS Files





Time Mark Every 60 S

Parameters		
DLIS Name	Description	Value
DO	System and Miscellaneous	
PP	Depth Offset for Playback	2.0 M
	Playback Processing	NORMAL

OP System Version: 16C0-147

MCM

SHM_GUN	16C0-147	UPCT-A	16C0-147
---------	----------	--------	----------

Input DLIS Files

DEFAULT	PERFO_190LUP	FN:188	PRODUCER	27-Oct-2008 19:32	498.7 M	378.7 M
---------	--------------	--------	----------	-------------------	---------	---------

Output DLIS Files

DEFAULT	PERFO_190PUP	FN:205	PRODUCER	28-Oct-2008 00:47
---------	--------------	--------	----------	-------------------

Company: **Esso Australia Pty Ltd****Schlumberger**Well: **BTA_A-3W**Field: **Barracouta**Rig: **SHU/Prod 2**Country: **Australia**

1-11/16" BackOff
Perforation Record
27-Oct-2008