

TIRRENGOWA-1

Location: Onshore Otway Basin
 Latitude: 38 38 58.60 S
 Longitude: 143 20 20.67 E

Total Depth Drilled (KB) = 1273 m
 Depth logged (KB) = 1272.9 m

KB Elevation = 143.6 m amsl

Seismic line reference: VP 289 Line 83-02

Completed March 24, 1987 by Hartogen Energy Limited
 Status = Plugged and abandoned

Lithostratigraphy from Tirrengowa-1 WCR
 Lithological interpretation by Natalia Liberman (2001)
 Palynology by Roger Morgan (1987)

Produced by the Basin Studies Group 29-Jun-2001 for Enclosure 6, VIMP 70



Lithological legend

Carbonate Lithotypes	Siliciclastic Lithotypes	Others
Limestone	Conglomerate	I'bedded sandstone & mudstone
Limestone, sandy	Sandstone, pebbly	Siltstone
Limestone, dolomitic	Sandstone	Mudstone (shale)
Dolomite	Sandstone, calcareous	Mudstone, calcareous
Dolomite, calcareous	Sandstone, argillaceous	Claystone
Marl	Sandstone, glauconitic	Coal
	"Greensand"	

N.B. Not all lithological patterns in the legend have been used in this wellsheet.

Accessory minerals legend

C - carbonaceous debris
 P - pyrite
 G - glauconite
 M - mica

Arrowheads indicate SWC range & abundance
 Patterns indicate cuttings/core range & abundance

	trace		common
	minor		abundant

Pristane/Phytane Legend

< 1.5 Anoxic - Subaqueous (lacustrine or marine)
 1.5 - 3.0 Trans - Transitional environment
 > 3.0 Oxidic - Subaerial environment

Palynological scheme legend

SPORE-POLLEN:

T. be = T. bellus
 P. tu = P. tuberculatus
 N. as = N. asperus
 P. as = P. asperopolus
 M. di = M. diversus
 L. ba = L. balmei
 F. lo = F. longus
 T. li = T. lilliei
 N. se = N. senectus
 T. ap = T. apoxyxinus
 P. ma = P. mawsonii
 H. un = H. uniformis (A. di = A. distocarlinatus)
 P. pa = P. pannosus
 C. pa = C. paradoxa
 C. st = C. striatus
 C. hu = C. hughesii
 P. no = P. notensis
 F. wo = F. wonthaggiensis
 C. au = C. australiensis
 R. wa = R. watheroensis

DINOFLAGELLATES:

W. th = W. thompsonae
 C. in = C. incompositum
 H. ta = H. tasmaniense
 D. he = D. heterophycta
 A. hy = A. hyperacantha
 A. ho = A. homomorphom
 E. cr = E. crassitabulata
 T. ev = T. evittii
 P. py = P. pyrophorum
 M. dr = M. druggii
 I. ko = I. korojenense
 X. au = X. australis
 N. ac = N. aceras
 I. ro = I. rotundatum
 I. cr = I. cretaceum
 O. po = O. porifera
 C. st = C. striatoconus
 P. in = P. infusorioides

N.B. Not all palynological zones in the legend have been used in this wellsheet.

Palynologists' environments legend

nm - non marine mm - marginal marine
 lac - lacustrine ns - nearshore marine
 est - estuarine om - offshore marine

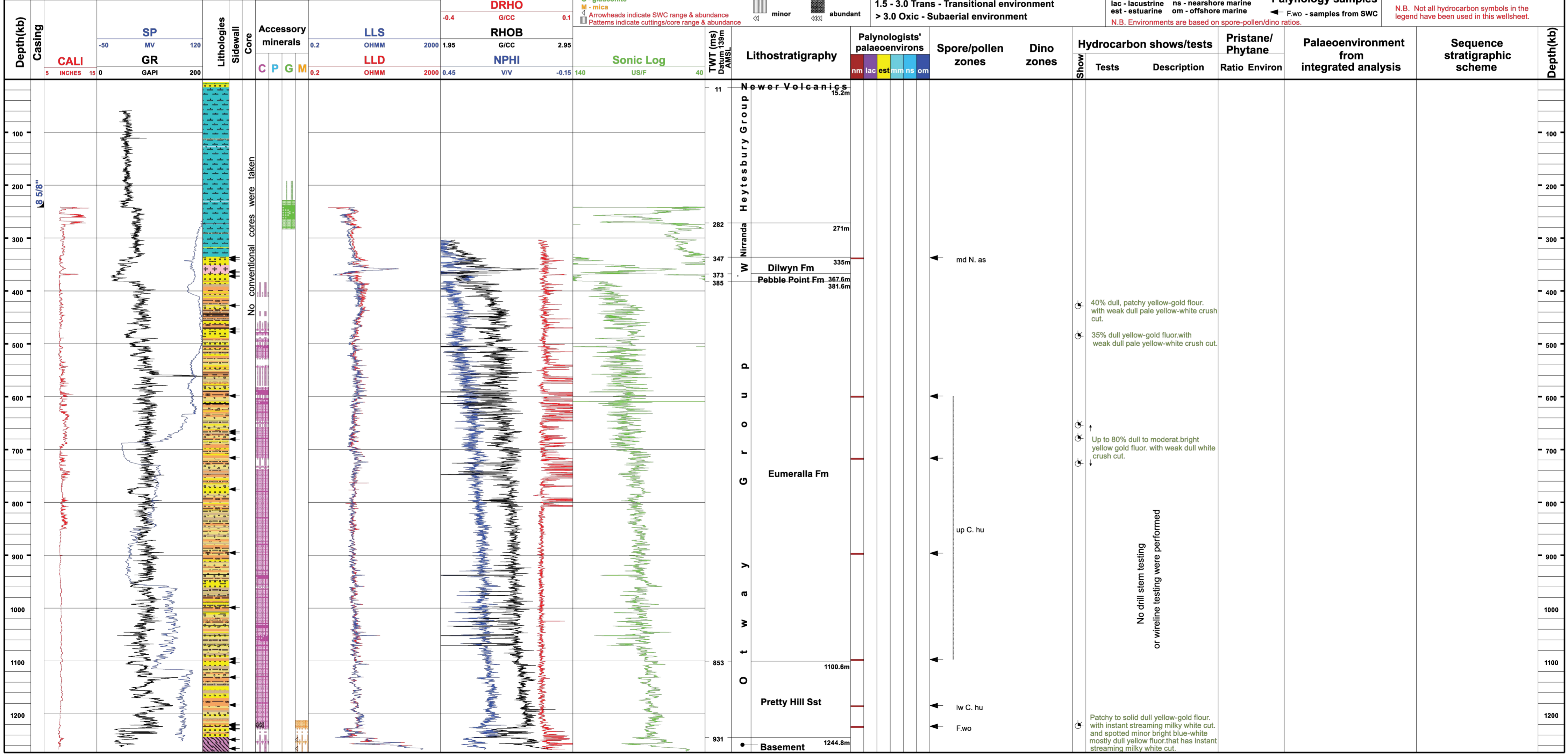
Palynology samples
 ← F.wo - samples from SWC

N.B. Environments are based on spore-pollen/dino ratios.

Hydrocarbon shows/tests legend

- Gas show (weak)
- Gas show (strong)
- Gas zone
- Oil show (weak)
- Oil show (strong)
- Oil zone
- Oil/gas show (weak)
- Oil/gas show (strong)
- Oil fluorescence
- CO₂ zone
- RFT test

N.B. Not all hydrocarbon symbols in the legend have been used in this wellsheet.



W - Wangerrip Group