

# IRREWARRA-1

Location: Onshore Otway Basin  
 Latitude: 38 17 59.47 S  
 Longitude: 143 40 47.49 E

Total Depth Drilled (KB) = 552 m  
 Depth logged (KB) = 550.35 m  
 KB Elevation = 4.3 m amsl  
 Seismic line reference: IR96-04

Completed May 7, 1998 by Cultus  
 Status = Plugged & abandoned

Lithostratigraphy from Irrewarra-1 WCR  
 Lithological interpretation by Natalia Liberman (2001)  
 Palynology (Not available)  
 Produced by the Basin Studies Group 04-Sep-2001 for Enclosure 10 VIMP70



## Lithological legend

Carbonate Lithotypes	Siliciclastic Lithotypes	Others
Limestone	Conglomerate	I'bedded sandstone & mudstone
Limestone, sandy	Sandstone, pebbly	Siltstone
Limestone, dolomitic	Sandstone	Mudstone (shale)
Dolomite	Sandstone, calcareous	Mudstone, calcareous
Dolomite, calcareous	Sandstone, argillaceous	Claystone
Marl	Sandstone, glauconitic	Coal
	"Greensand"	

N.B. Not all lithological patterns in the legend have been used in this wellsheet.

## Accessory minerals legend

C - carbonaceous debris	P - pyrite	trace	common
G - glauconite	M - mica	minor	abundant

Arrowheads indicate SWC range & abundance  
 Patterns indicate cuttings/core range & abundance

## Pristane/Phytane Legend

< 1.5 Anoxic - Subaqueous (lacustrine or marine)  
 1.5 - 3.0 Trans - Transitional environment  
 > 3.0 Oxidic - Subaerial environment

## Palynological scheme legend

SPORE-POLLEN:		DINOFLAGELLATES:	
T. be = T. bellus	P. tu = P. tuberculatus	W. th = W. thompsonae	C. in = C. incompositum
N. as = N. asperus	P. as = P. asperopolus	H. ta = H. tasmaniense	D. he = D. heterophylcta
M. di = M. diversus	L. ba = L. balmei	A. hy = A. hyperacantha	A. ho = A. homomorphom
F. lo = F. longus	T. li = T. lilliei	E. cr = E. crassitabulata	T. ev = T. evittii
N. se = N. senectus	T. ap = T. apoxyxenus	P. py = P. pyrophorum	M. dr = M. druggii
P. ma = P. mawsonii	H. un = H. uniforma (A. di = A. distocarinas)	I. ko = I. korojenense	X. au = X. australis
C. pa = C. paradoxa	C. st = C. striatus	N. ac = N. aceras	I. ro = I. rotundatum
C. hu = C. hugesii	P. no = P. notensis	O. po = O. porifera	C. st = C. striatoconus
F. wo = F. wonthaggiensis	C. au = C. australiensis	P. in = P. infusorioides	
R. wa = R. watheroensis			

N.B. Not all palynological zones in the legend have been used in this wellsheet.

## Palynologists' environments legend

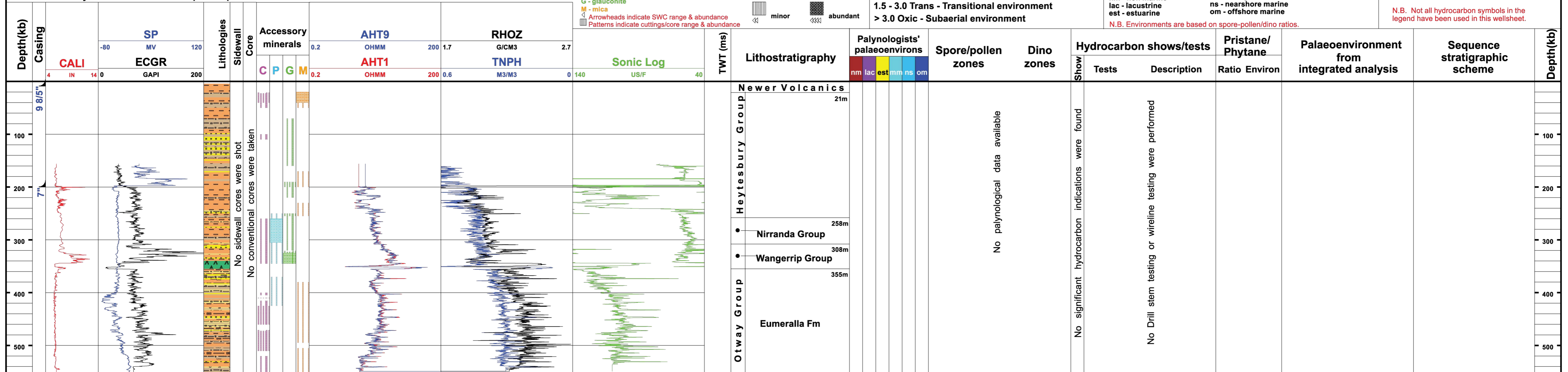
nm - non marine  
 lac - lacustrine  
 est - estuarine  
 mm - marginal marine  
 ns - nearshore marine  
 om - offshore marine

N.B. Environments are based on spore-pollen/dino ratios.

## Hydrocarbon shows/tests legend

- Gas show (weak)
- Gas show (strong)
- Gas zone
- Oil show (weak)
- Oil show (strong)
- Oil zone
- Oil/gas show (weak)
- Oil/gas show (strong)
- Oil fluorescence
- CO<sub>2</sub> zone
- RFT test

N.B. Not all hydrocarbon symbols in the legend have been used in this wellsheet.



No sidewall cores were shot  
 No conventional cores were taken

No palynological data available

No significant hydrocarbon indications were found

No Drill stem testing or wireline testing were performed

Newer Volcanics  
 Heytesbury Group  
 • Nirranda Group  
 • Wangerrip Group  
 Otway Group  
 Eumeralla Fm