

INGLEBY-1

Location: Onshore Otway Basin
 Latitude: 38 18 53.6 S
 Longitude: 143 47 44.8 E

Total Depth Drilled (KB) = 331.2 m
 Depth logged (KB) = 326.5 m

KB Elevation = 117.3 m amsl
 Seismic line reference: OH85-16, sp 375

Completed October 27, 1990 by Gas and Fuel Exploration N.L.
 Status = Plugged & abandoned

Lithostratigraphy from Ingleby-1 WCR
 Lithological interpretation by Natalia Liberman (1998)
 Palynology by M.K. Macphail (1991)

Produced by the Basin Studies Group 25-Jun-2001 for Enclosure 8 VIMP70



Lithological legend

Carbonate Lithotypes	Siliciclastic Lithotypes	Others
Limestone	Conglomerate	I'bedded sandstone & mudstone
Limestone, sandy	Sandstone, pebbly	Siltstone
Limestone, dolomitic	Sandstone	Mudstone (shale)
Dolomite	Sandstone, calcareous	Mudstone, calcareous
Dolomite, calcareous	Sandstone, argillaceous	Claystone
Marl	Sandstone, glauconitic	Coal
	"Greensand"	

N.B. Not all lithological patterns in the legend have been used in this wellsheet.

Palynological scheme legend

SPORE-POLLEN:		DINOFLAGELLATES:	
T. be = T. bellus	W. th = W. thompsonae	C. in = C. incompositum	H. ta = H. tasmaniense
P. tu = P. tuberculatus	C. in = C. incompositum	D. he = D. heterophylcta	A. hy = A. hyperacantha
N. as = N. asperus	H. ta = H. tasmaniense	A. ho = A. homomorphom	E. cr = E. crassitabulata
P. as = P. asperopolus	A. ho = A. homomorphom	T. ev = T. evittii	P. py = P. pyrophorum
M. di = M. diversus	E. cr = E. crassitabulata	M. dr = M. druggii	I. ko = I. korojenense
L. ba = L. balmei	T. ev = T. evittii	X. au = X. australis	N. ac = N. aceras
F. lo = F. longus	P. py = P. pyrophorum	I. ro = I. rotundatum	I. cr = I. cretaceum
T. li = T. lilliei	I. ko = I. korojenense	O. po = O. porifera	C. st = C. striatoconus
N. se = N. senectus	M. dr = M. druggii	P. in = P. infusorioides	
T. ap = T. apoxyxinus	I. ko = I. korojenense		
P. ma = P. mawsonii	X. au = X. australis		
H. un = H. uniforma (A. di = A. distocarinated)	N. ac = N. aceras		
P. pa = P. pannosus	I. ro = I. rotundatum		
C. pa = C. paradoxa	I. cr = I. cretaceum		
C. st = C. striatus	O. po = O. porifera		
C. hu = C. hughesii	C. st = C. striatoconus		
P. no = P. notensis	P. in = P. infusorioides		
F. wo = F. wonthaggiensis			
C. au = C. australiensis			
R. wa = R. watheroensis			

N.B. Not all palynological zones in the legend have been used in this wellsheet.

Accessory minerals legend

C - carbonaceous debris		
P - pyrite		
G - glauconite		
M - mica		

Arrowheads indicate SWC range & abundance
 Patterns indicate cuttings/core range & abundance

Pristane/Phytane Legend

< 1.5 Anoxic - Subaqueous (lacustrine or marine)
1.5 - 3.0 Trans - Transitional environment
> 3.0 Oxid - Subaerial environment

Palynologists' environments legend

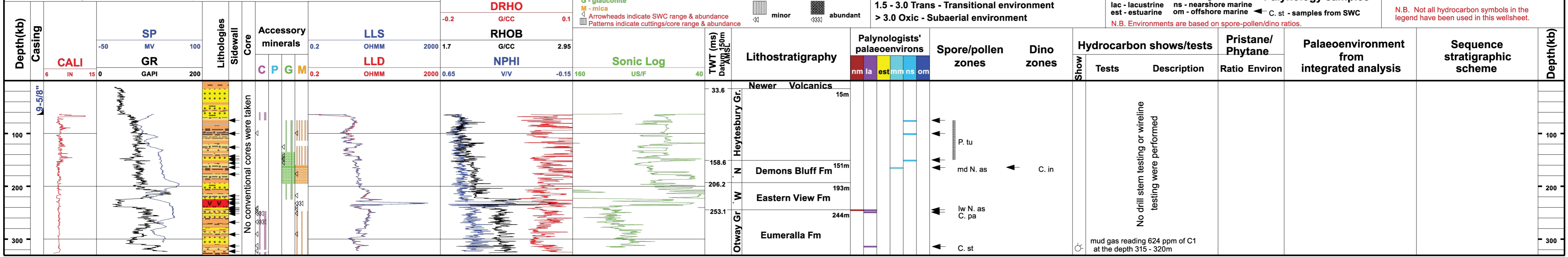
nm - non marine	mm - marginal marine	la - lacustrine	ns - nearshore marine	est - estuarine	om - offshore marine
-----------------	----------------------	-----------------	-----------------------	-----------------	----------------------

Palynology samples
 ← C. st - samples from SWC
 N.B. Environments are based on spore-pollen/dino ratios.

Hydrocarbon shows/tests legend

	Gas show (weak)
	Gas show (strong)
	Gas zone
	Oil show (weak)
	Oil show (strong)
	Oil zone
	Oil/gas show (weak)
	Oil/gas show (strong)
	Oil fluorescence
	CO ₂ zone
	RFT test

N.B. Not all hydrocarbon symbols in the legend have been used in this wellsheet.



mud gas reading 624 ppm of C1 at the depth 315 - 320m

N - Nirranda Group W - Wangerrip Group